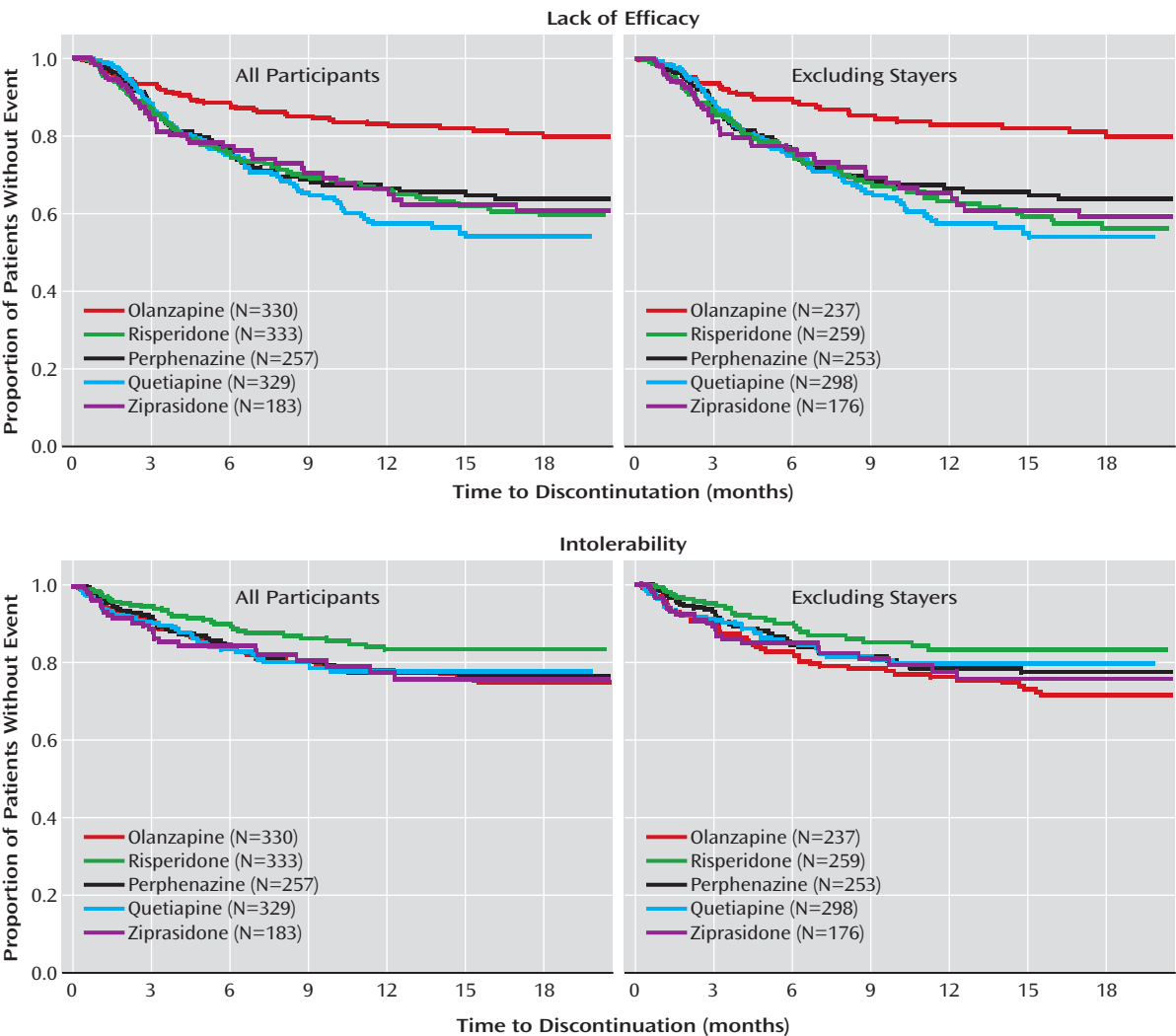


Supplemental Figure C: Discontinuation Survival Curves Excluding Stayers Compared with CATIE Phase 1 Findings<sup>a</sup>



<sup>a</sup> CATIE data originally presented in Lieberman et al.: “Effectiveness of antipsychotic drugs in patients with chronic schizophrenia” (N Engl J Med 2005; 353:1209–1223). Figures reprinted by permission of The New England Journal of Medicine.