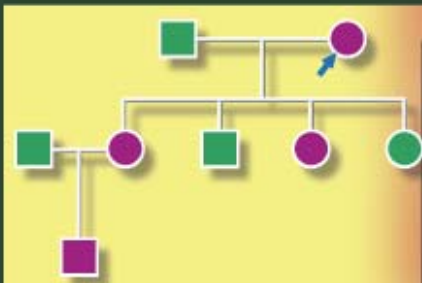


THE AMERICAN JOURNAL OF PSYCHIATRY



**Sticks, Stones, and Hurtful Words:
Relative Effects of Various Forms of
Childhood Maltreatment**

Martin H. Teicher et al. 993

**Offspring of Depressed Parents:
20 Years Later**

Myrna M. Weissman et al. 1001

**Internalizing Behaviors in
4-Year-Old Children Exposed in
Utero to Psychotropic Medications**

Shaila Misri et al. 1026

**Ventrolateral Prefrontal Cortex
Activation and Attentional Bias
in Response to Angry Faces in
Adolescents With Generalized
Anxiety Disorder**

Christopher S. Monk et al. 1091

June 2006

Volume 163 • Number 6

Official Journal of the
AMERICAN PSYCHIATRIC ASSOCIATION

ajp.psychiatryonline.org

THE AMERICAN JOURNAL OF PSYCHIATRY

Official Journal of the American Psychiatric Association

Instructions for Activating Your Online Subscription

As with most electronic periodicals, there are step-by-step instructions that must be followed to enable you to receive your online issue of *The American Journal of Psychiatry*. Please follow the procedures outlined below.

Make sure you have your customer identification number available. This number is printed on your *Journal* mailing label, directly above your name and address. If you cannot locate this number, please contact American Psychiatric Publishing, Inc., through one of the following methods:

- e-mail: accessnumber@psych.org
- phone: (800) 368-5777
- fax: (703) 907-1091
- mail:

American Psychiatric Publishing, Inc.
1000 Wilson Blvd., Suite 1825
Arlington, VA 22209-3901
Attn: Circulation Department.

Internet: <http://www.psychiatryonline.org>. Click on the "Subscriptions" button located near the bottom of the page. Then click on the appropriate link:

- **ACTIVATE Your Member or Individual (Nonmember) Subscription**
- **ACTIVATE Your Institutional Subscription**

Please review the Terms and Conditions of the online subscription before starting the subscription process. Before entering your customer number in the box provided, follow the instructions below.

For APA Members, you will find your member number on the mailing label above your name. It is a 10-digit number beginning with zeros. Enter your number in the box and click the SUBMIT button.

For Individual Nonmembers and Institutions, your customer number is on the mailing label above your name. It is a 10-digit number beginning with 22 or 30. Enter this number in the box and click the SUBMIT button.

Fill out all the information on the next screen and press the "Send Form" button at the bottom on the right. **DO NOT CLICK** the "Clear Form" button.

INSTITUTIONAL SUBSCRIBERS ONLY

You will then be brought to the screen to enter the IP addresses for your institution. These IP addresses should conform to the Terms and Conditions of your license. Read the "Help with IP Addresses" to see how to enter IP ranges.

When finished, click the "Done" button. You will receive an e-mail confirmation that your subscription has been activated.

The American Journal of Psychiatry is online at ajp.psychiatryonline.org

Psychological Medicine

Volume 36 Number 5 May 2006

CONTENTS

In this Issue 573

REVIEW ARTICLE

Suicidality in chronic pain: a review of the prevalence, risk factors and psychological links TANG, N.K.Y. AND CRANE, C. 575

ORIGINAL ARTICLES

Does co-morbid depressive illness magnify the impact of chronic physical illness? A population-based perspective STEIN, M.B., COX, B.J., AFIFI, T.O., BELIK, S.-L., AND SAREEN, J. 587

Association between major depressive symptoms in heart failure and impaired regional cerebral blood flow in the medial temporal region: a study using ^{99m}Tc-HMPAO single photon emission computerized tomography (SPECT) ALVES, T.C.T.F., RAYS, J., FRAGUAS JR., R., WAJNGARTEN, M., TELLES, R.M.S., DURAN, F.L.D., MENEGHETTI, J.C., ROBILOTTA, C.C., PRANDO, S., DE CASTRO, C.C., BUCHPIGUEL, C.A., AND BUSATTO, G.F. 597

Structural brain correlates of IQ changes in bipolar disorder BRUNO, S.D., PAPADOPOULOU, K., CERCIGNANI, M., CIPOLLOTTI, L., AND RON, M.A. 609

A prospective study of the transition rates of subthreshold (hypo)mania and depression in the general population REGEER, E.J., KRABBENDAM, L., DE GRAAF, R., TEN HAVE, M., NOLEN, W.A., AND VAN OS, J. 619

Impaired cognition and decision-making in bipolar depression but no 'affective bias' evident RUBINSZTEIN, J.S., MICHAEL, A., UNDERWOOD, B.R., TEMPEST, M., AND SAHAKIAN, B.J. 629

Levels-of-processing effect on internal source monitoring in schizophrenia RAGLAND, J.D., MCCARTHY, E., BILKER, W.B., BRENSINGER, C.M., VALDEZ, J., KOHLER, C., GUR, R.E., AND GUR, R.C. 641

Predictors of rate and time to remission in first-episode psychosis: a two-year outcome study MALLA, A., NORMAN, R., SCHMITZ, N., MANCHANDA, R., BÉCHARD-EVANS, L., TAKHAR, J., AND HARICHARAN, R. 649

Patients with schizophrenia do not produce more false memories than controls but are more confident in them MORITZ, S., WOODWARD, T.S., AND RODRIGUEZ-RAECKE, R. 659

Effect of body-oriented psychological therapy on negative symptoms in schizophrenia: a randomized controlled trial RÖHRICHT, F., AND PRIEBE, S. 669

Reasons why some UK medical graduates who initially choose psychiatry do not pursue it as a long-term career LAMBERT, T.W., TURNER, G., FAZEL, S., AND GOLDACRE, M.J. 679

Concordance in the mental health of spouses: analysis of a large national household panel survey BUTTERWORTH, P., AND RODGERS, B. 685

Prevalence, subtypes, and correlates of DSM-IV conduct disorder in the National Comorbidity Survey Replication NOCK, M.K., KAZDIN, A.E., HIRIPI, E., AND KESSLER, R.C. 699

Seven criteria for improving effectiveness trials in psychiatry TANELLA, M., THORNICROFT, G., BARBUJ, C., CIPRIANI, A., AND SARACENO, B. 711

BOOK REVIEWS

Evolution and Posttraumatic Stress: Disorders of Vigilance and Defence SMYTHIES, J. 721

Dementia (Third Edition) JOLLEY, D. 722

Genes and Behavior WEISSMAN, M. M. 723

Correspondence 725

American Journal of Psychiatry Contents December 2005/January 2006 729



THE BRITISH JOURNAL OF PSYCHIATRY

May 2006, VOL. 188

<http://bjp.rcpsych.org>

A16 Editorial Board

A17 Highlights of this issue

A18 Psychiatry in pictures

EDITORIALS

401 **Delivering medical care for patients with serious mental illness or promoting a collaborative model of recovery?**

H. Lester and L. Gask

403 **Stalking of mental health professionals: an underrecognised problem**

R.J. Mclvor and E. Petch

SPECIAL ARTICLE

405 **Euthanasia: the role of the psychiatrist**

K. Naudts, C. Ducatelle, J. Kovacs, K. Laurens, F. van den Eynde, and C. van Heeringen

REVIEW ARTICLE

410 **Pharmacological treatment for unipolar psychotic depression. Systematic review and meta-analysis**

J. Wijkstra, J. Lijmer, F.J. Balk, J.R. Geddes, and W.A. Nolen

PAPERS

416 **Effect of month of birth on the risk of suicide**

E. Salib and M. Cortina-Borja

423 **Prevalence and correlates of personality disorder in Great Britain**

J. Coid, M. Yang, P. Tyrer, A. Roberts, and S. Ullrich

432 **Agoraphobia in adults: incidence and longitudinal relationship with panic**

O.J. Bienvenu, C.U. Onyike, M.B. Stein, L.-S. Chen, J. Samuels, G. Nestadt, and W.W. Eaton

439 **Cognitive-behavioural therapy for substance use disorders in people with psychotic disorders. Randomised controlled trial**

A. Baker, S. Bucci, T.J. Lewin, F. Kay-Lambkin, P.M. Constable, and V.J. Carr

449 **Antidepressant therapy and C-reactive protein levels**

S.M. O'Brien, L.V. Scott, and T.G. Dinan

453 **Military deployment to the Gulf War as a risk factor for psychiatric illness among US troops**

N. Fiedler, G. Ozakinci, W. Hallman, D. Wartenberg, N.T. Brewer, D.H. Barrett, and H.M. Kipen

460 **Quality of life of people with dementia in residential care homes**

J. Hoe, G. Hancock, G. Livingston, and M. Orrell

465 **Lifetime and 12-month prevalence of mental disorders in the Nigerian Survey of Mental Health and Well-Being**

O. Gureje, V.O. Lasebikan, L. Kola, and V.A. Makanjuola

472 **Quantifying the contributions of three types of information to the prediction of criminal conviction using the receiver operating characteristic**

A. Buchanan and M. Leese

479 **Accuracy and utility of post-conviction polygraph testing of sex offenders**

D. Grubin and L. Madsen

SHORT REPORTS

484 **Grey-matter abnormalities in boys with Tourette syndrome: magnetic resonance imaging study using optimised voxel-based morphometry**

A.G. Ludolph, F.D. Juengling, G. Libal, A.C. Ludolph, J.M. Fegert, and J. Kassubek

486 **Views of child psychiatrists on physical contact with patients**

A. Blower, R. Lander, A. Crawford, R. Elliot, C. McNulty, C. Holmes, P. Srireddy, M. Mulcahy, and H. Minnis

COLUMNS

488 Correspondence

495 One hundred years ago

496 Book reviews

498 Contents of the *American Journal of Psychiatry*

499 Contents of *Advances in Psychiatric Treatment*

500 From the Editor's desk



For free listing of your organization's official annual or regional meeting, please send us the following information: sponsor, location, inclusive dates, type and number of continuing education credits (if available), and the name, address, and telephone number of the person or group to contact for more information. In order for an event to appear in our listing, all notices and changes must be received at least 6 months in advance of the meeting and should be addressed to:

Calendar, American Journal of Psychiatry, 1000 Wilson Boulevard,
Suite 1825, Arlington, VA 22209-3901, (703) 907-8572 (tel),
jblair@psych.org (e-mail).

Because of space limitations, only listings of meetings of the greatest interest to Journal readers will be included.

SEPTEMBER

September 8–10, Clinical Neurology for Psychiatrists, Los Angeles, CA. Contact: Center for Continuing Medical Education, Montefiore Medical Center, 3301 Bainbridge Avenue, Bronx, NY 10467; (718) 920-6674 (tel), cme@montefiore.org (e-mail), www.cnfp.org (web site).

September 9–10, Stanford Department of Psychiatry and the Association for Research in Personality Disorders (ARPD) will be presenting an educational program entitled "Personality Disorders, Research and Treatment," Stanford, CA. Contact: Pascale Goupillaud Stemmler, Department of Psychiatry and Behavioral Sciences, Stanford University School of Medicine, 401 Quarry Road, Room 3365, Stanford, California 94305; (650) 725-3193 (tel), (650) 725-3194 (fax), pascale@stanford.edu (e-mail).

September 11–12, Psychiatry for Psychiatrists: The Pre-Test, Los Angeles, CA. Contact: Center for Continuing Medical Education, Montefiore Medical Center, 3301 Bainbridge Avenue, Bronx, NY 10467; (718) 920-6674 (tel), cme@montefiore.org (e-mail), www.cnfp.org (web site).

OCTOBER

October 3–6, International Early Psychosis Association conference: "Beyond the Crossroads," Birmingham, United Kingdom. Contact: Happenings Australia, (+61 3) 9866 6288 (tel), (+61 3) 9866 6313 (fax), event@happenings.com.au (e-mail), www.happenings.com.au (web site).

October 5–8, 58th Institute on Psychiatric Services, American Psychiatric Association, New York. Contact: Jill Gruber, APA Annual Meetings Dept., 1000 Wilson Blvd., Ste. 1825, Arlington, VA 22209; (703) 907-7815.

October 6–8, Clinical Neurology for Psychiatrists, New York, NY. Contact: Cen-

ter for Continuing Medical Education, Montefiore Medical Center, 3301 Bainbridge Avenue, Bronx, NY 10467; (718) 920-6674 (tel), cme@montefiore.org (e-mail), www.cnfp.org (web site).

October 13–15, International Conference on Schizophrenia (ICONS II), Chennai, India. Contact: Dr. R. Thara, Schizophrenia Research Foundation (SCARF), R/7A, North Main Road, West Anna Nagar Extension, Chennai, India 600101; (044) 2615 3971 (tel), (044) 2615 1073 (fax), scarf@vsnl.com (e-mail), www.icons-scarf.org (web site)

October 24–29, 53rd Annual Meeting, American Academy of Child and Adolescent Psychiatry, San Diego. Contact: Anita Wiler, Assistant Director of Meetings, AACAP, 3615 Wisconsin Ave., N.W., Washington, DC 20016-3007; (202) 966-7300 Ext. 101 (tel), (202) 966-5894 (fax), meetings@aacap.org (e-mail), www.aacap.org (web site).

NOVEMBER

November 17–19, 2nd International Conference of SAARC Psychiatric Federation, Kathmandu, Nepal. Contact: Dr. Vidya Dev Sharma, Department of Psychiatry and Mental Health, IOM, Maharajgunj, Kathmandu, Nepal; 977-01-4420869 (tel), vdsharma@healthnet.org.np (e-mail), www.spf2.org.np (web site).

DECEMBER

December 2, 3rd Annual Child and Adolescent Symposium, Tucson, AZ. Contact: Professional Development Office, University of Arizona College of Medicine, Department of Psychiatry, PO Box 245002, 1501 N Campbell, #7423, Tucson, AZ 85724-5002; (520) 626-1392 (tel), (520) 626-5732 (fax), uapsycon@email.arizona.edu (e-mail), www.psychiatry.arizona.edu (web site).

JANUARY 2007

January 13, 6th Annual Women's Mental Health Symposium, Tucson, AZ. Contact: Professional Development Office, University of Arizona College of Medicine, Department of Psychiatry, PO Box 245002, 1501 N Campbell, #7423, Tucson, AZ 85724-5002; (520) 626-1392 (tel), (520) 626-5732 (fax), uapsycon@email.arizona.edu (e-mail), www.psychiatry.arizona.edu (web site).

FEBRUARY

February 19–23, 16th Annual Psychopharmacology Review, Tucson, AZ. Contact: Professional Development Office, University of Arizona College of Medicine, Department of Psychiatry, PO Box 245002, 1501 N Campbell, #7423, Tucson, AZ 85724-5002; (520) 626-1392 (tel), (520) 626-5732 (fax), uapsycon@email.arizona.edu (e-mail), www.psychiatry.arizona.edu (web site).

February 21–25, annual meeting of the American College of Psychiatrists, Palm Springs, California. Contact: American College of Psychiatrists, 732 Addison St., Ste. B, Berkeley, CA 94710; (510) 704-8020 (tel), (510) 704-0113 (fax), Barbara@acpsych.org (e-mail).

MARCH

March 1–4, 20th Annual Meeting of the American Association for Geriatric Psychiatry, New Orleans. Contact: AAGP, 7910 Woodmont Ave., Ste. 1050, Bethesda, MD 20814-3004; (301) 654-7850 (tel), (301) 654-4137 (fax), www.aagpmeeting.org (web site).

APRIL

April 18–21, 28th Annual Meeting and Scientific Sessions of the Society of Be-

Continued on page A46



Continued from page A42

havioral Medicine, Miami Beach. Contact: Society of Behavioral Medicine, 17000 Commerce Parkway, Ste. C, Mount Laurel, NJ 08054; (856) 439-1297 (tel), (856) 439-0525 (fax), info@sbm.org (e-mail).

MAY

May 19–24, 160th Annual Meeting of the American Psychiatric Association, San Diego. Contact: Cathy Nash, APA Annual Meetings Dept., 1000 Wilson Blvd., Ste. 1825, Arlington, VA 22209; (703) 907-7822.

OCTOBER

October 7–11, 15th World Congress

on Psychiatric Genetics, New York. Contact: Lynn E DeLisi, International Society of Psychiatric Genetics, NYU School of Medicine, 650 First Avenue, 5th Floor Room 543, New York, NY 10016; (212) 263-3420 (tel), (212) 263-3407 (fax).

October 11–14, 59th Institute on Psychiatric Services, American Psychiatric Association, New Orleans, LA. Contact: Jill Gruber, APA Annual Meetings Dept., 1000 Wilson Blvd., Ste. 1825, Arlington, VA 22209; (703) 907-7815.

October 12–15, Annual Meeting of the Society for the Study of Psychiatry and Culture (SSPC), Hyatt Regency Capitol Hill, Washington, DC. Contact: Jim Boehnlein or Shannon Squire, (503) 220-3481, shannon.squire@med.va.gov (e-mail).

October 23–28, 54th Annual Meeting of the American Academy of Child and Adolescent Psychiatry, Boston. Contact: AACAP, 3615 Wisconsin Avenue, N.W., Washington, DC 20016-3007; (202) 966-7300 (tel), (202) 966-2891 (fax), meetings@aacap.org (e-mail), www.aacap.org (web site).

FEBRUARY 2008

February 15–18, 21st Annual Meeting of the American Association for Geriatric Psychiatry, Washington, DC. Contact: AAGP, 7910 Woodmont Ave., Ste. 1050, Bethesda, MD 20814-3004; (301) 654-7850 (tel), (301) 654-4137 (fax), www.aagpmeeting.org (web site).

MAY

May 3–8, 161st Annual Meeting of the American Psychiatric Association, Washington, DC. Contact: Cathy Nash, APA Annual Meetings Dept., 1000 Wilson Blvd., Ste. 1825, Arlington, VA 22209; (703) 907-7822.

OCTOBER

October 2–5, 60th Institute on Psychiatric Services, American Psychiatric Association, Chicago, IL. Contact: Jill Gruber, APA Annual Meetings Dept., 1000 Wilson Blvd., Ste. 1825, Arlington, VA 22209; (703) 907-7815.

Coming in the July 2006 issue THE AMERICAN JOURNAL OF PSYCHIATRY

*A Comparison of Mirtazapine and Nortriptyline Following Two Consecutive Failed Medication Treatments for Depressed Outpatients: A STAR*D Report*

M. Fava, J.A. Rush, S.R. Wisniewski, A.A. Nierenberg, J. Alpert, P.J. McGrath, M.E. Thase, D. Warden, M. Biggs, J.F. Luther, G. Niederehe, L. Ritz, and M.H. Trivedi

Descriptive and Longitudinal Observations on the Relationship of Borderline Personality Disorder (BPD) and Bipolar Disorders

J.G. Gunderson

A Double-Blind, Placebo-Controlled Trial of Oxcarbazepine in the Treatment of Bipolar Disorder in Children and Adolescents

K.D. Wagner, R.A. Kowatch, G.J. Emslie, R.L. Findling, T.E. Wilens, K. McCague, J. D'Souza, A. Wamil, R.B. Lehman, D. Berv, and D. Linden

Changing Profiles of Service Sectors Used for Mental Health Care in the U.S.

P.S. Wang, O. Demler, M. Olfson, H.A. Pincus, K.B. Wells, R.C. Kessler