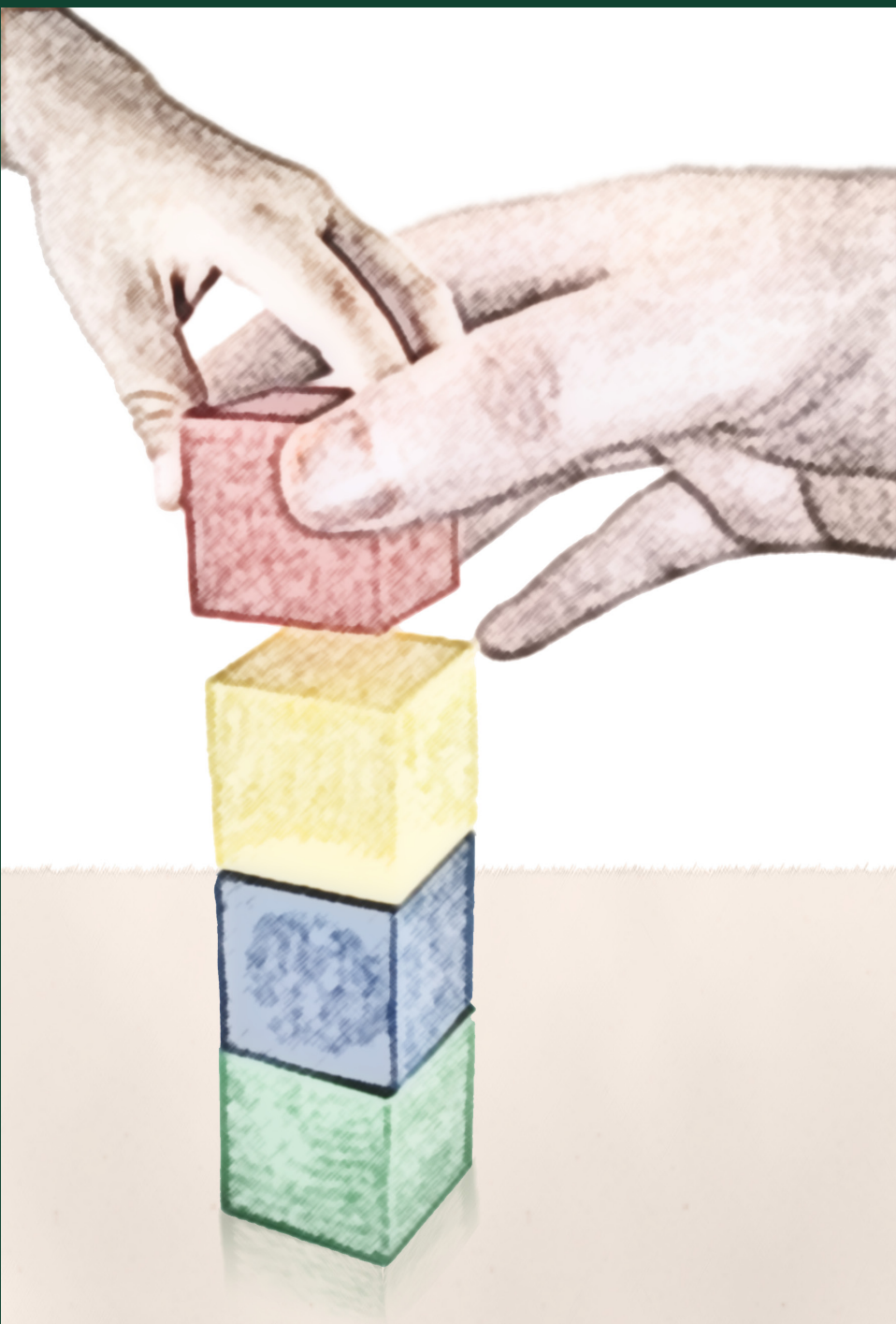


THE AMERICAN JOURNAL OF PSYCHIATRY



◀ **Prevalence of Autism Spectrum Disorders in a Total Population Sample**

Young Shin Kim, M.D., Ph.D., et al. 904

Depressive Symptoms, Health Behaviors, and Subsequent Inflammation in Patients With Coronary Heart Disease: Prospective Findings From the Heart and Soul Study

Hester E. Duivis, M.Sc., et al. 913

Analysis of 94 Candidate Genes and 12 Endophenotypes for Schizophrenia From the Consortium on the Genetics of Schizophrenia

Tiffany A. Greenwood, Ph.D., et al. 930

Comparison of Antipsychotics for Metabolic Problems

T. Scott Stroup, M.D., M.P.H., et al. 947

Continuing Medical Education 1005

September 2011
Volume 168 • Number 9

Official Journal of the
AMERICAN PSYCHIATRIC ASSOCIATION

ajp.psychiatryonline.org