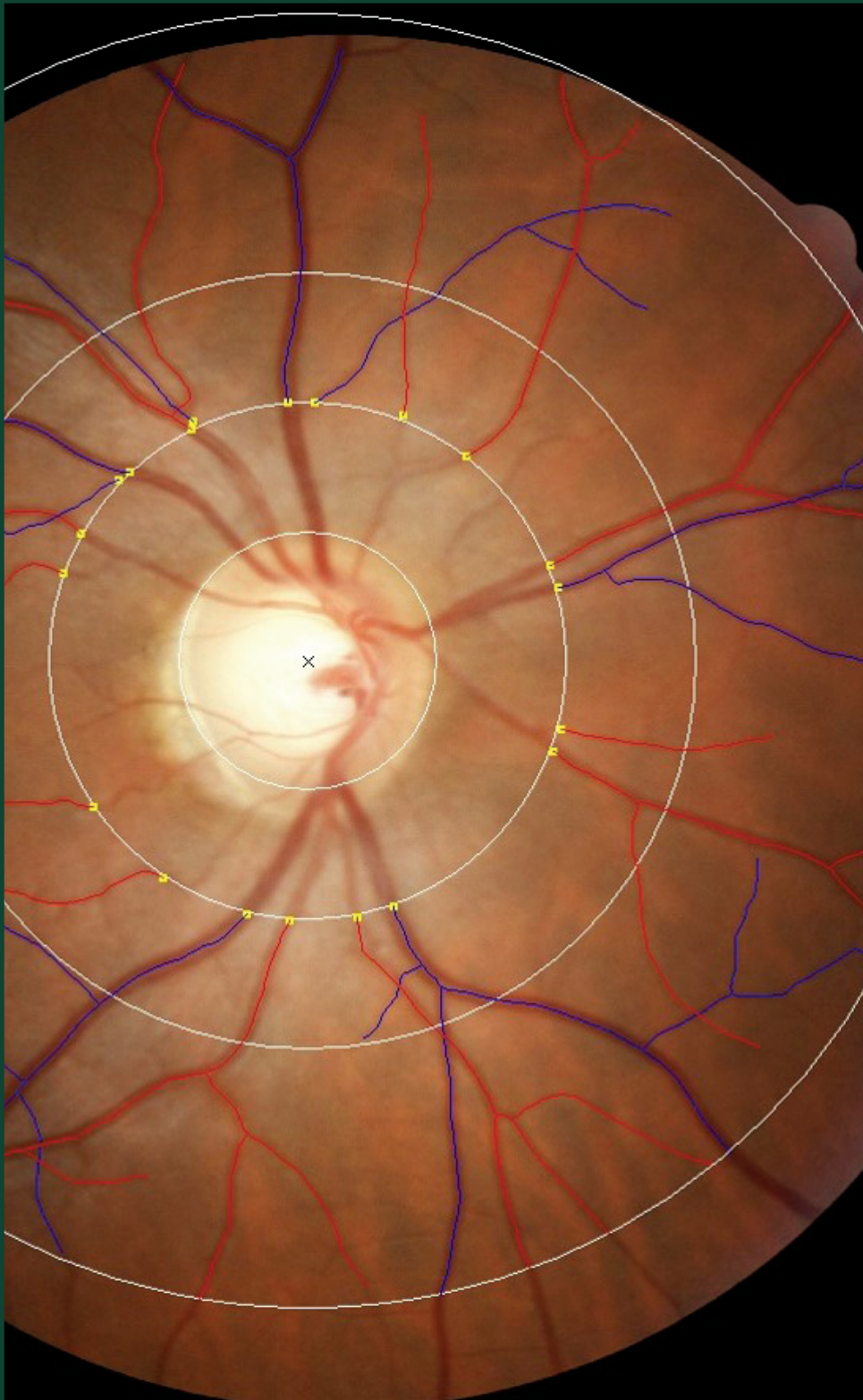


THE AMERICAN JOURNAL OF PSYCHIATRY



**The Hotel Study: Multimorbidity
in a Community Sample Living in
Marginal Housing**

Fidel Vila-Rodriguez, M.D., et al 1413

**Assisting Social Security Disability
Insurance Beneficiaries With
Schizophrenia, Bipolar Disorder,
or Major Depression in Returning
to Work**

Robert E. Drake, M.D., Ph.D., et al 1433

◀ **Microvascular Abnormality in
Schizophrenia as Shown by
Retinal Imaging**

Madeline H. Meier, Ph.D., et al 1451

**Varenicline, Smoking Cessation,
and Neuropsychiatric Adverse
Events**

Robert D. Gibbons, Ph.D., and
J. John Mann, M.D. 1460

December 2013

Volume 170 • Number 12

Official Journal of the
AMERICAN PSYCHIATRIC ASSOCIATION

ajp.psychiatryonline.org