



The American Journal of Psychiatry

Official Journal of the American Psychiatric Association

Officers 2016–2017

President

Maria A. Oquendo, M.D., Ph.D.

President-Elect

Anita S. Everett, M.D.

Treasurer

Bruce J. Schwartz, M.D.

Secretary

Altha J. Stewart, M.D.

Assembly

Speaker

Daniel J. Anzia, M.D.

Speaker-Elect

Theresa M. Miskimen, M.D.

Recorder

James R. Batterson, M.D.

Office of the CEO and Medical Director

CEO and Medical Director

Saul Levin, M.D., M.P.A.

Board of Trustees

Uchenna Achebe, M.D., M.P.H.

Jeffrey Akaka, M.D.

Lama Bazzi, M.D.

R. Scott Benson, M.D.

Renée L. Binder, M.D.

Ronald M. Burd, M.D.

Stella Cai, M.D.

Jeffrey L. Geller, M.D., M.P.H.

Jeffrey A. Lieberman, M.D.

Roger Peele, M.D.

Vivian B. Pender, M.D.

Gail E. Robinson, M.D.

Paul Summergrad, M.D.

Richard F. Summers, M.D.

Melinda Young, M.D.

Editorial Board

Editor

Robert Freedman, M.D.

Deputy Editors

David A. Lewis, M.D.

Robert Michels, M.D.

Daniel S. Pine, M.D.

A. John Rush, M.D.

Susan K. Schultz, M.D.

Carol A. Tamminga, M.D.

Associate Editors

Alan Brown, M.D., M.P.H.

Tyrone Cannon, Ph.D.

Benjamin G. Druss, M.D., M.P.H.

Felton Earls, M.D.

Graham J. Emslie, M.D.

Yasmin Hurd, Ph.D.

Joan L. Luby, M.D.

Constantine G. Lyketsos, M.D., M.H.S.

Helen S. Mayberg, M.D., F.R.C.P.C.

Terrie E. Moffitt, Ph.D.

Rajesh Narendran, M.D.

Roy Perlis, M.D.

Anita Thapar, M.B.B.Ch., F.R.C.Psych.,

Ph.D., F.Med.Sci.

Mauricio Tohen, M.D., Dr.PH., M.B.A.

Eduard Vieta, M.D., Ph.D.

Katherine L. Wisner, M.D., M.S.

Xin Yu, M.D.

Editor Emerita

Nancy C. Andreasen, M.D., Ph.D.

Former Editors

Amariah Brigham, M.D., 1844–1849

T. Romeyn Beck, M.D., 1849–1854

John P. Gray, M.D., 1854–1886

G. Alder Blumer, M.D., 1886–1894

Richard Dewey, M.D., 1894–1897

Henry M. Hurd, M.D., 1897–1904

Edward N. Brush, M.D., 1904–1931

Clarence B. Farrar, M.D., 1931–1965

Francis J. Braceland, M.D., 1965–1978

John C. Nemiah, M.D., 1978–1993

Editorial Staff

Executive Editor

Michael D. Roy

Senior Editors

John J. Guardiano, Ph.D.

Jane Weaver

Production Manager

Susan Westrate

Assistant Editor

Angela Moore

Online Content Manager

Michael Pogachar

Editorial Support Services Manager

Heidi Koch

Editorial Assistant

Linda LaCour

Spanish Content Manager

Sergi Casals, M.A.

Assistants to the Editors

Lois Lilienthal

Laura English

Rachel Hogg

Russell A. Scholl

Publisher

Rebecca D. Rinehart

Subscription and Business Information

The American Journal of Psychiatry, ISSN 0002-953X, is published monthly by the American Psychiatric Association.

The American Psychiatric Association does not hold itself responsible for statements made in its publications by contributors or advertisers. Unless so stated, material in *The American Journal of Psychiatry* does not reflect the endorsement, official attitude, or position of the American Psychiatric Association or of the Journal's Editorial Board.

Periodicals postage paid at Arlington, VA, and additional mailing offices. POSTMASTER: Send address changes to *The American Journal of Psychiatry*, Circulation Department, American Psychiatric Association, 1000 Wilson Blvd., Suite 1825, Arlington, VA 22209-3901.

Editorial Office

American Journal of Psychiatry
American Psychiatric Association
1000 Wilson Blvd., Suite 1825
Arlington, VA 22209-3901
Phone: (703) 907-7885, (703) 907-7889
E-mail: ajp@psych.org

Customer Service

Phone: (800) 368-5777 (toll-free)
E-mail: appi@psych.org

APA Member Subscription Services

Phone: (888) 35-PSYCH (toll-free)

Subscriptions

Per year: individual \$318.00,
international \$478.00

Institutional subscriptions are tier priced. For institutional site license or pricing information, contact (703) 907-8538 or institutions@psych.org.

Additional subscription options, including single issues and student rates

Contact Customer Service

Advertising

Pharmaceutical Print and Online Advertising
Frank Cox, Kathleen Harrison, Tim Wolfinger
Pharmaceutical Media, Inc.
30 East 33rd Street
New York, NY 10016
Phone: (212) 904-0379
E-mail: twolfinger@pminy.com

Nonpharmaceutical and Online Sales

Eamon Wood
Pharmaceutical Media, Inc.
E-mail: ewood@pminy.com
(see address and phone above).

Permissions and Reprints

Material published in the journals of the American Psychiatric Association and American Psychiatric Association Publishing is protected by copyright and all rights are reserved. Material may not be reproduced in any form or by any means without written permission from the copyright owner. For permission to reproduce material published by APA, please visit http://www.appi.org/Customer_Service/Pages/Permissions.aspx for more information. Permission can also be secured through the Copyright Clearance Center (www.copyright.com).

APA does not require that permission be obtained for the photocopying of isolated articles for nonprofit classroom or library reserve use; all fees associated with such permission are waived. This consent does not extend to other kinds of copying, such as copying for general distribution, for advertising or promotional purposes, for creating new collective works, or for resale. Requests for commercial distribution should be directed to (703) 907-7875.

For bulk reprints, please contact Jane Cha, (703) 907-7889; email: jcha@psych.org.

Indexed in Abstracts for Social Workers, Academic Abstracts, Biological Abstracts, Chemical Abstracts, Chicago Psychoanalytic Literature Index, Cumulative Index to Nursing Literature, Excerpta Medica, Hospital Literature Index, Index Medicus, International Nursing Index, Nutrition Abstracts, Psychological Abstracts, Science Citation Index, Social Science Source, and Social Sciences Index.

Pages are produced by Dartmouth Journal Services, Waterbury, VT, and printed by Dartmouth Printing Company, Hanover, NH, on acid-free paper effective with Volume 169, Number 1, January 2012.

© 2017 American Psychiatric Association.

THE AMERICAN PSYCHIATRIC ASSOCIATION

1000 Wilson Blvd., Suite 1825, Arlington, VA 22209-3901
(888) 357-7924 (toll-free inside the U.S. and Canada) / (703) 907-7300
web site: www.psychiatry.org • e-mail: apa@psych.org

Chairpersons of Councils, Committees, and Task Forces

Standing Committees

Bylaws	Edythe Harvey, M.D.
Elections	Barry K. Herman, M.D.
Ethics	Ezra Griffith, M.D.
Finance and Budget	Alan F. Schatzberg, M.D.
<i>Audit</i>	Bruce J. Schwartz, M.D.
<i>Investment Oversight</i>	David Fassler, M.D.
Joint Reference	Anita S. Everett, M.D.
Membership	Rahn K. Bailey, M.D.
Nominating	Renee Binder, M.D.
Tellers	Jose Vito, M.D.

Councils

Council on Addiction Psychiatry

Frances R. Levin, M.D.

Council on Advocacy and Government Relations

Debra Pinals, M.D.

Advocacy and Litigation Funding

Jeffrey Akaka, M.D.

Council on Children, Adolescents, and Their Families

Joseph V. Penn, M.D.

Council on Communications

Christopher Ramsey, M.D.

Council on Geriatric Psychiatry

Robert P. Roca, M.D.

Council on Healthcare Systems and Financing

Harsh K. Trivedi, M.D.

Reimbursement for Psychiatric Care

Laurence Miller, M.D.

RBRVS, Codes and Reimbursement

Gregory G. Harris, M.D.

Telepsychiatry

James H. Shore, M.D.

Council on International Psychiatry

Bernardo Ng, M.D.

Council on Medical Education and Lifelong Learning

Mark H. Rapaport, M.D.

Scientific Program

Philip Muskin, M.D.

Vestermark Award Committee

Jonathan F. Borus, M.D.

Council on Minority Mental Health and Health Disparities

Christina V. Mangurian, M.D.

Council on Psychiatry and Law

Steven K. Hoge, M.D.

Judicial Action

Marvin S. Swartz, M.D.

Council on Psychosomatic Medicine (Consultation Liaison Psychiatry)

David F. Gitlin, M.D.

Council on Quality Care

Grayson Norquist, M.D.

Mental Health Information Technology

Steven Daviss, M.D.

Performance Measures

Karen Pierce, M.D.

Steering Committee on Practice Guidelines

Michael J. Vergare, M.D.

Council on Research

Dwight L. Evans, M.D.

Psychiatric Dimensions of Disasters

Robert J. Ursano, M.D.

The Residents' JOURNAL

The American Journal of Psychiatry Residents' Journal

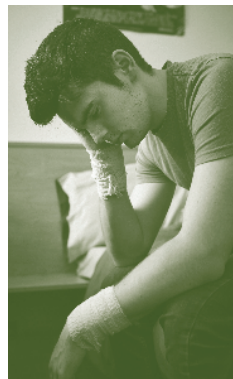
January 2017

Volume 12

Issue 1

Inside

- 2 Suicidal Behavior: A Distinct Psychobiology?**
Naji C. Saitoum, M.D.
Examining the serotonergic system, hypothalamic pituitary adrenal axis, neuroinflammation, kynurenine pathway, and neuroplasticity, as well as interplay of biological systems.
- 5 Supporting Residents in the Wake of Patient Suicide**
Charles A. Whitmore, M.D., M.P.H., Jenna Cook, M.D., Lucas Salg, M.D.
Review of a newly-developed curriculum at the University of Colorado.
- 8 Current Challenges in the Management of LGBT Suicide**
Rafik Sidaros, M.D.
Analysis of risk factors, minority stress, and transgender issues, as well as positions on therapy and interventions.
- 11 Suicide Rates in Cancer Patients in the Current Era in United States**
Vivek Kumar, M.D., Neha Chaudhary, M.D., Parita Soni, M.B.B.S., Prameeta Jha, M.B.B.S.
Comparisons between patients and the general population.
- 15 Suicide Prediction With Machine Learning**
Gopalkumar Rakesh, M.D.
Examining use of statistical techniques that utilize complex calculations in analyzing large data sets to predict risk factors.
- 18 Countertransference Reactions to a Suicidal Patient**
Mary-Catherine Rensko, D.O.
Discussion of a case in which the resident physician's avoidance of the patient demonstrated unconscious feelings of countertransference hatred.
- 20 Suicide by Cop: A Psychiatric Phenomenon**
Ralph H. de Similien, M.D., M.S., M.Ed., Adamma Okorofor, M.D.
Analysis of statistical characteristics, sociodemographic variables, and treatment approaches.
- 23 A Tale of Shamans, Exorcism, and Finally Suicide: A Perspective From Two Worlds**
Nandhini Madhanagopal, M.D.
A resident's cultural viewpoint on suicide in India and America.



© Shutterstock.com

EDITOR-IN-CHIEF

Katherine Pier, M.D.

SENIOR DEPUTY EDITOR

Rachel Katz, M.D.

DEPUTY EDITOR

Oliver Glass, M.D.

GUEST EDITOR

Gopalkumar Rakesh, M.D.

ASSOCIATE EDITORS

Gopalkumar Rakesh, M.D.

Janet Charoensook, M.D.

MEDIA EDITOR

Michelle Liu, M.D.

CULTURE EDITOR

Aparna Alturu, M.D.

STAFF EDITOR

Angela Moore

EDITORS EMERITI

Rajiv Radhakrishnan, M.B.B.S., M.D.

Misty Richards, M.D., M.S.

Arshya Vahabzadeh, M.D.

Monifa Seawell, M.D.

Sarah M. Fayad, M.D.

Joseph M. Cerimele, M.D.

Molly McVoy, M.D.

Sarah B. Johnson, M.D.

Editor-in-Chief
Katherine Pier, M.D.

Senior Deputy Editor
Rachel Katz, M.D.

Deputy Editor
Oliver Glass, M.D.

Associate Editors
Gopalkumar Rakesh, M.D.
Janet Charoensook, M.D.

The Residents' Journal, the largest and most robust resident-led journal in the house of medicine, is an e-publication that serves as a forum to share your ideas and experiences in training, clinical practice, research, and careers with your colleagues.

To submit a manuscript, please visit mc.manuscriptcentral.com/appi-ajp and select a manuscript type for AJP Residents' Journal. You may submit a commentary (500 words), book review (500 words), history of psychiatry (500 words), clinical case conference (1,250 words), review article (1,500 words), treatment in psychiatry article (1,500 words), research article (1,250 words), drug review (1,500 words), or letter to the editor (250 words).

The Residents' Journal is sent free-of-charge to all psychiatry residents. Anyone interested in being included on the distribution list should contact Angela Moore, *The Residents' Journal* staff editor at ajp@psych.org with "Subscribe to Residents' Journal" in the subject line.

To access the complete Residents' Journal archives, visit ajp.psychiatryonline.org/residents_journal

Go Online

Visit ajp.psychiatryonline.org for these features!



AJP in Advance

Discover the latest research advances before they appear in print

No Association of Lower Hippocampal Volume With Alzheimer's Disease Pathology in Late-Life Depression

Lower hippocampal volume in patients with late-life depression was not related to amyloid pathology, countering the belief that their low hippocampal volume is due to prodromal Alzheimer's disease.

Randomized Trial of an Integrated Behavioral Health Home: The Health Outcomes Management and Evaluation (HOME) Study

Behavioral health homes provide higher-quality medical care for patients with serious mental illness and cardiometabolic risk factors than does usual care, but clinical outcomes are similar for the two approaches.



AJP CME

Earn CME credit: 3 courses per issue

This month's courses appear on pages 191–194. Each short course is based on one article in this issue and can earn up to 1 *AMA PRA Category 1 Credit™*. CME credit is issued only **online**, and a paid subscription to AJP's CME course program is required.

Visit psychiatryonline.org/cme and click on the "American Journal of Psychiatry" tab.



AJP Multimedia

Access Audio or Video for highlights of each issue

In AJP Audio this month, Executive Editor Michael Roy discusses use of stimulants and performance enhancers as a possible risk factor for PTSD, behavioral and brain markers of overgeneralized fear conditioning in PTSD, the epidemiology of first-episode psychosis, predictors of suicidal behavior, neural predictors of initiating alcohol use during adolescence, and mediation of placebo effects by patient expectancy in antidepressant clinical trials.

In this month's video, Deputy Editor Daniel S. Pine, M.D., discusses the articles "Imaging Microglial Activation in Untreated First-Episode Psychosis: A PET Study With [¹⁸F]FEPPA" and "Neural Substrates of Overgeneralized Conditioned Fear in PTSD."



History of Psychiatry

Revisit the field's rich history through the pages of AJP

25 years ago this month: "Is Sleep Deprivation Useful in the Treatment of Depression?"

Sleep deprivation, properly conducted, can have rapid and dramatic antidepressant effects, although they are generally not long-lasting. Drs. Ellen Leibenluft and Thomas A. Wehr review the literature on clinical applications of sleep deprivation in the treatment of depression, including as an alternative to antidepressant medication, as a potentiator of antidepressant medication, and as a predictor of response to antidepressant medication, as well as its application as a preventive measure against recurrent mood cycles and as a diagnostic probe.

