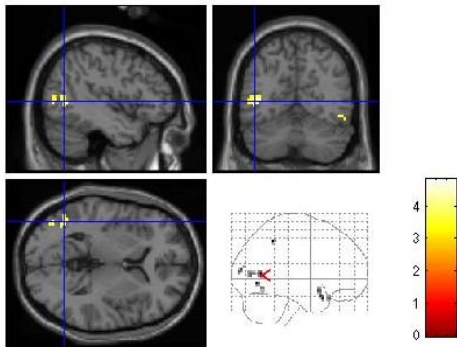


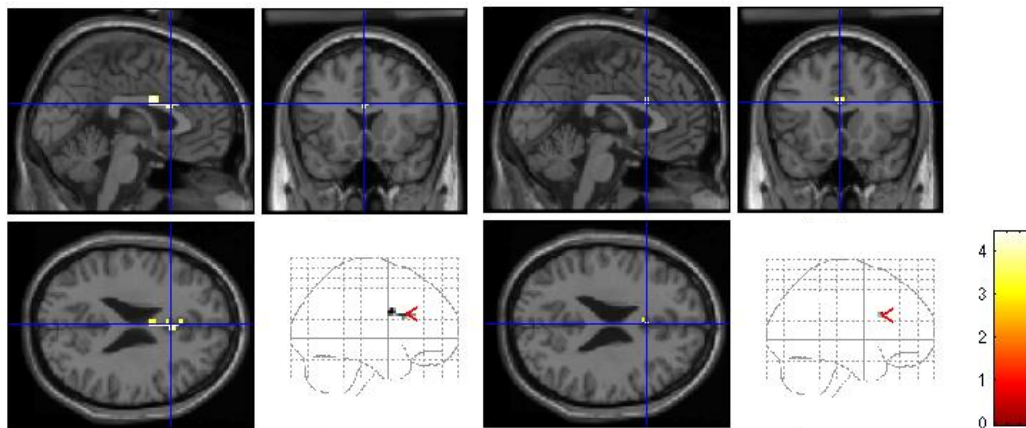
Triplanar images with glass brain statistical parameter images showing differences in functional connectivity between patients with refractory depression, patients with nonrefractory depression, and healthy comparison subjects. The yellow clusters on statistical parameter images (black regions in the glass brain image) represent areas with significantly different connectivity with the seed regions ( $p < 0.05$ , corrected). The color bar reflects the  $t$  value for post hoc analysis.

**Seed 1: Anterior cingulate cortex**



Healthy comparison subjects > Non-refractory patients

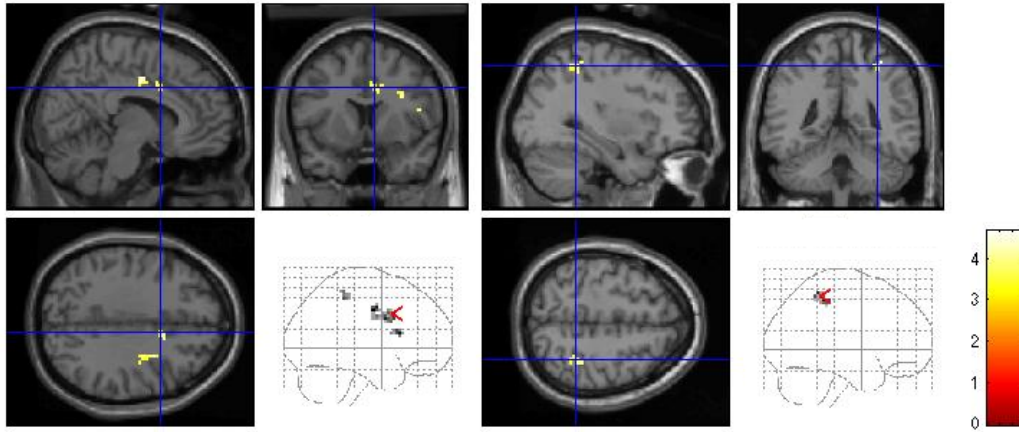
**Seed 2: Left amygdala**



Healthy comparison subjects > nonrefractory patients

Refractory patients > nonrefractory patients

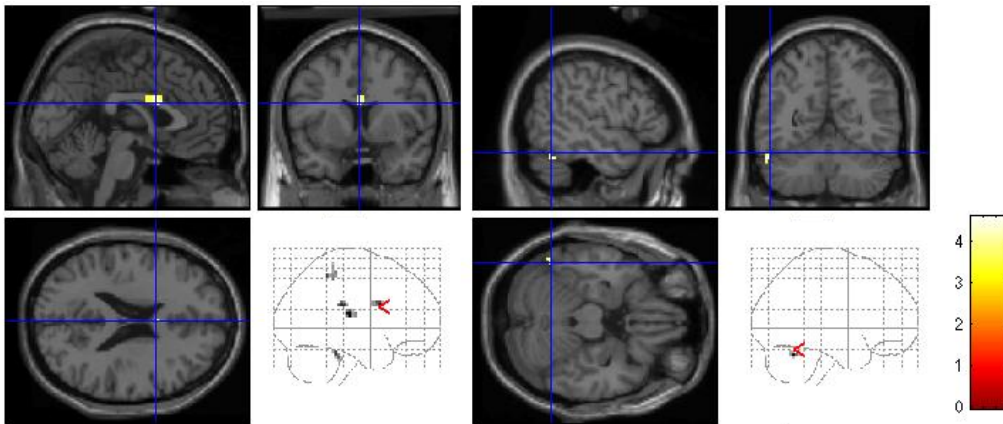
**Seed 3: Left dorsal lateral prefrontal area**



Healthy comparison subjects > nonrefractory patients

Healthy comparison subjects > refractory patients

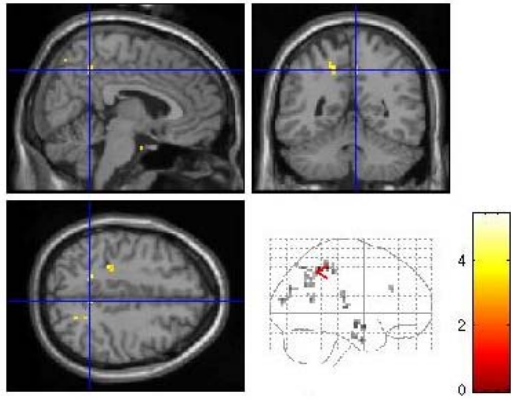
**Seed 4: Left hippocampus**



Healthy comparison subjects > nonrefractory patients

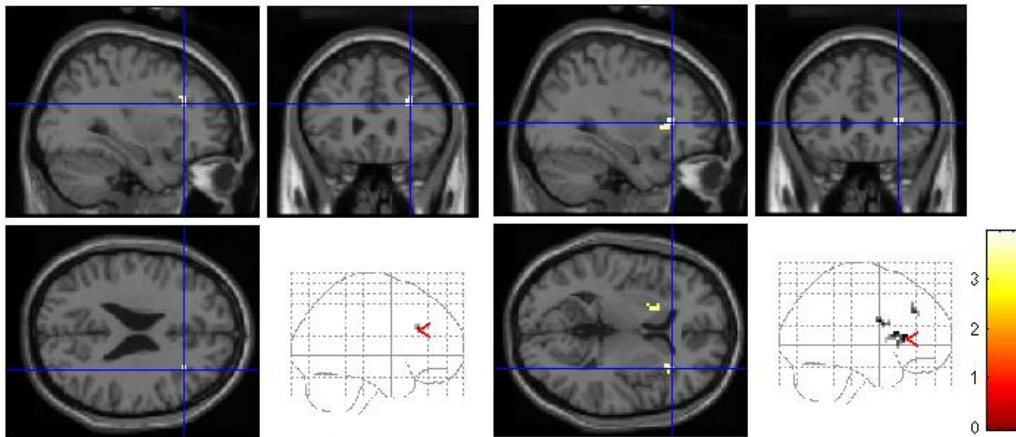
Healthy comparison subjects > refractory patients

*Seed 5: Left insula*



Healthy comparison subjects > nonrefractory patients

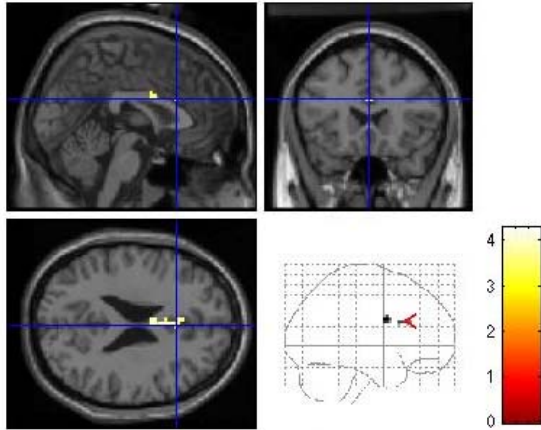
*Seed 6: Left thalamus*



Healthy comparison subjects > nonrefractory patients

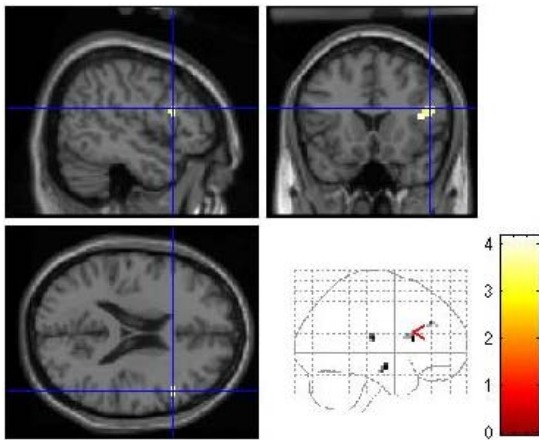
Healthy comparison subjects > refractory patients

*Seed 7: Right amygdala*



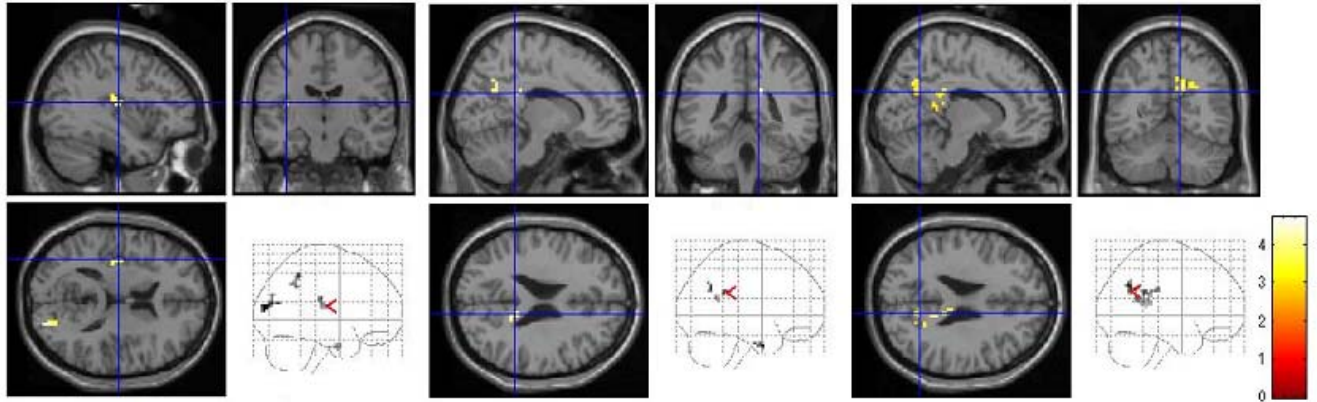
Healthy comparison subjects > nonrefractory patients

*Seed 8: Right hippocampus*



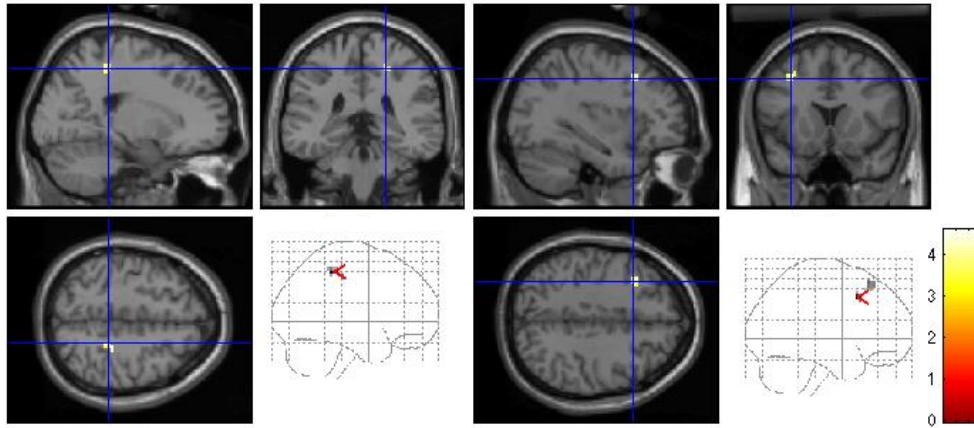
Healthy comparison subjects > nonrefractory patients

**Seed 9: Right insula**



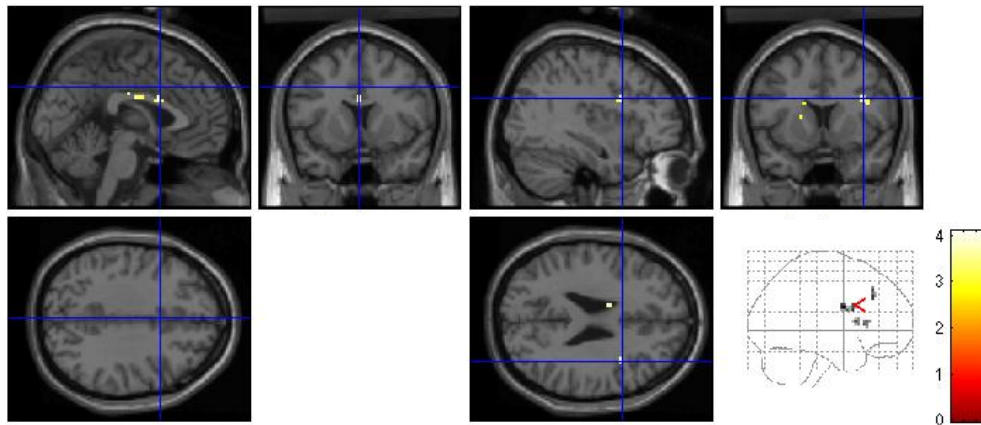
Healthy comparison subjects > nonrefractory patients  
Healthy comparison subjects > refractory patients  
Refractory patients > nonrefractory patients

**Seed 10: Right putamen**



Healthy comparison subjects > nonrefractory patients  
Healthy comparison subjects > refractory patients

*Seed 11: Right thalamus*



Healthy comparison subjects > nonrefractory patients

Healthy comparison subjects > refractory patients