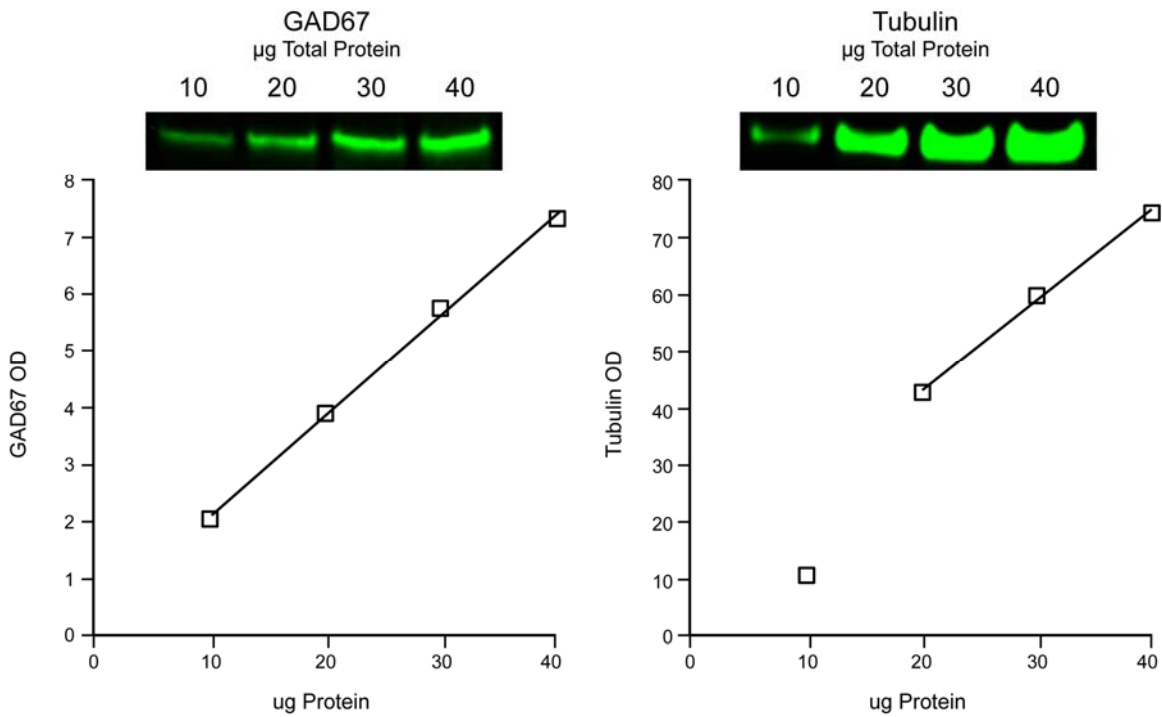


FIGURE S1. GAD67 (1:800) and Tubulin (1:20,000) Optical Density (OD) Increase in a Linear and Proportional Fashion as Protein Load Increases Between 20 and 40 μg ^a



^a The gel images and plots show an increase in GAD67 (left) and tubulin (right) OD with increasing protein load. OD and μg protein are significantly correlated from 10–40 μg ($r=0.99$, $p=0.001$) and 20–40 μg ($r=0.99$, $p=0.026$) for GAD67 and tubulin, respectively.