

Supplementary Table

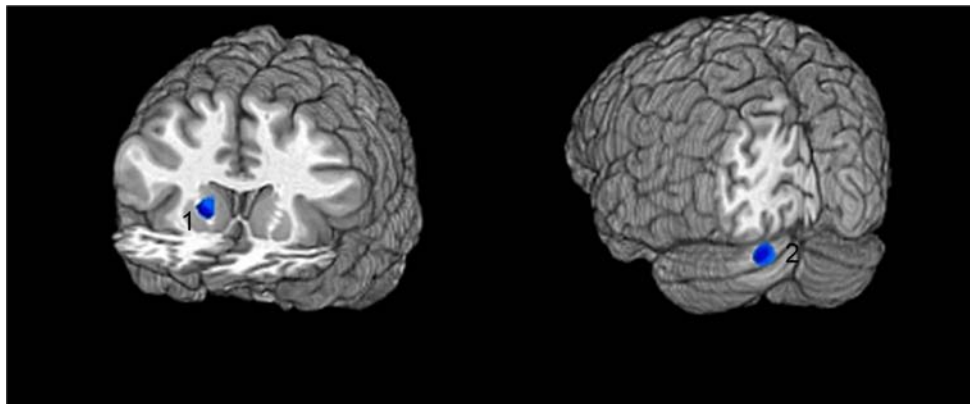
Significant Regional Cerebral Blood Flow Anomalies in Major Depressive Disorder Supported by Only Two Studies

MDD, subjects with major depressive disorder. CTL, control subjects.

Structure	Direction of Effect	Talairach coordinates	Cluster size (mm ³)
Subcallosal Gyrus	MDD > CTL	(23, 8, -12)	2281
Dorsolateral Prefrontal Cortex	MDD > CTL	(43, 41, 14)	856
Parahippocampal Gyrus	MDD > CTL	(-13, -41, -2)	594
Dorsolateral Prefrontal Cortex	MDD < CTL	(-37, 33, 23)	1364
Dorsal Anterior Cingulate Cortex	MDD < CTL	(3, 22, 20)	394

Supplementary Figure

Structures Showing Differential Responding, as Assessed With fMRI, to Positive Stimuli in Depressed Relative to Control Samples



Structure	Direction of Effect	Valence specific effect?	Talairach coordinates	Cluster size (mm ³)	Figure
Caudate and Putamen	CTL > MDD	Yes	(18, 12, 5)	211	1
Cerebellar Uvula	CTL > MDD	Yes	(-19, -80, -25)	544	2

CTL, control subjects. MDD, subjects with major depressive disorder.