

Contains: 1 table, 3 figures

TABLE S1. Demographic data in four groups

Characteristic and Measure	Placebo		5mg		10mg		20mg		Analysis	
	(N=10)		(N=10)		(N=10)		(N=10)			
	N	%	N	%	N	%	N	%	X ²	p
Male Sex	7	70	8	80	7	70	8	80	0.53	0.91
	Mean	SD	Mean	SD	Mean	SD	Mean	SD	ANOVA F	p
Age (yrs)	33.6	9.8	29.6	8.9	27.1	5.9	31.5	9.9	0.90	0.45
Education (yrs)	7.4	2.1	8.3	3.3	8.0	1.9	6.6	1.5	0.88	0.46
Duration of Illness (months)	42.3	52.7	48.9	38.8	50.3	47.2	40.3	47.6	0.10	0.96
Risperidone dose (mg/day)	4.6	1.9	4.4	1.9	4.8	1.7	5.4	1.7	1.02	0.42

Note: no significant differences were observed among the dosage and placebo groups on any demographic characteristic.

FIGURE S1. Flow chart of study participants

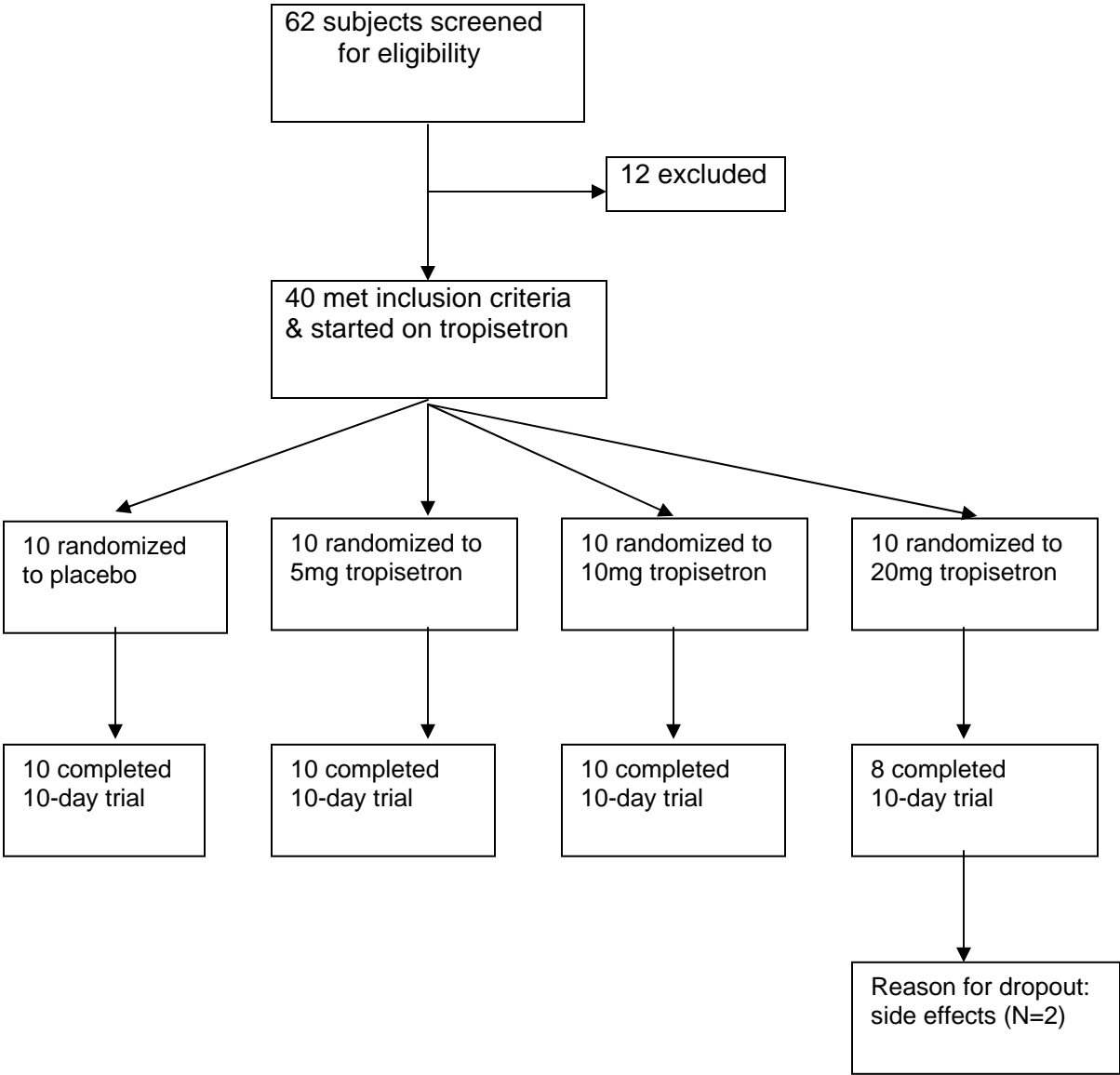


FIGURE S2. The P50 gating ratio was significantly lower than placebo in the 10 mg ($p=0.001$; effect size=2.01), 5 mg ($p=0.001$; effect size=1.39) and 20mg ($p=0.004$; effect size=1.41)

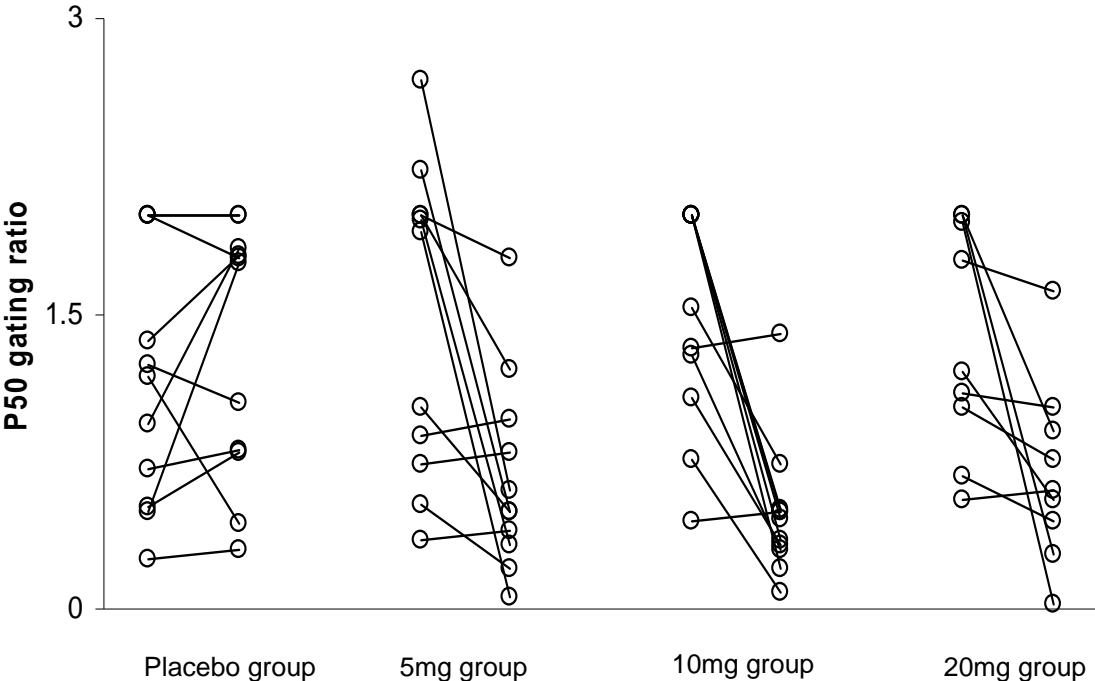


FIGURE S3. Grand average for the patients (n=40) at the baseline (A), the placebo group (n=10) (B) and the three active treatment group of tropisetron (C for 5mg, n=10; D for 10mg, n=10, and E for 20mg, n=8) at post-treatment. Click onset is at 0 ms. Blue thick line: S1 response waveform; pink line: S2 response waveform. Arrows show the location of P50 wave. Positive polarity is downwards.

