

FIGURE S1. Flow of Participants Through the Study

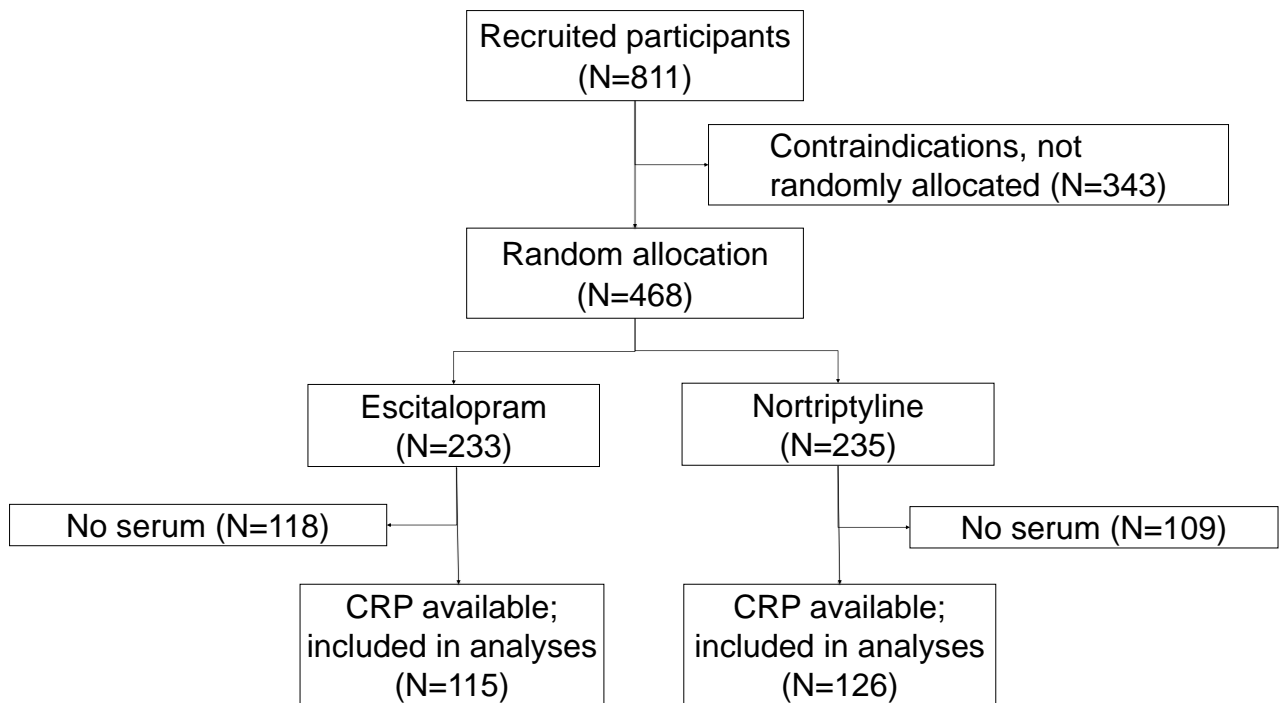
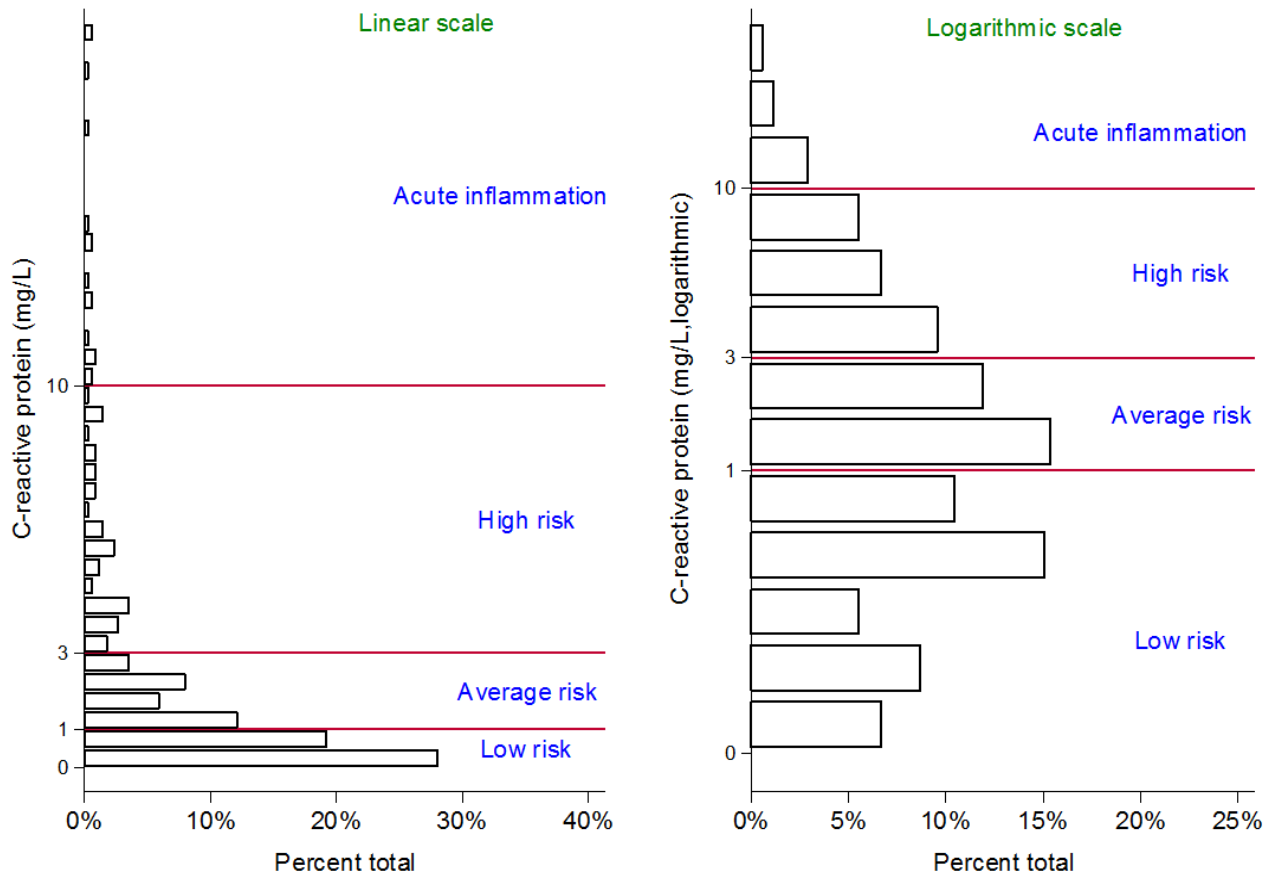


FIGURE S2. C-Reactive Protein Levels Distribution on Linear and Logarithmic Scales



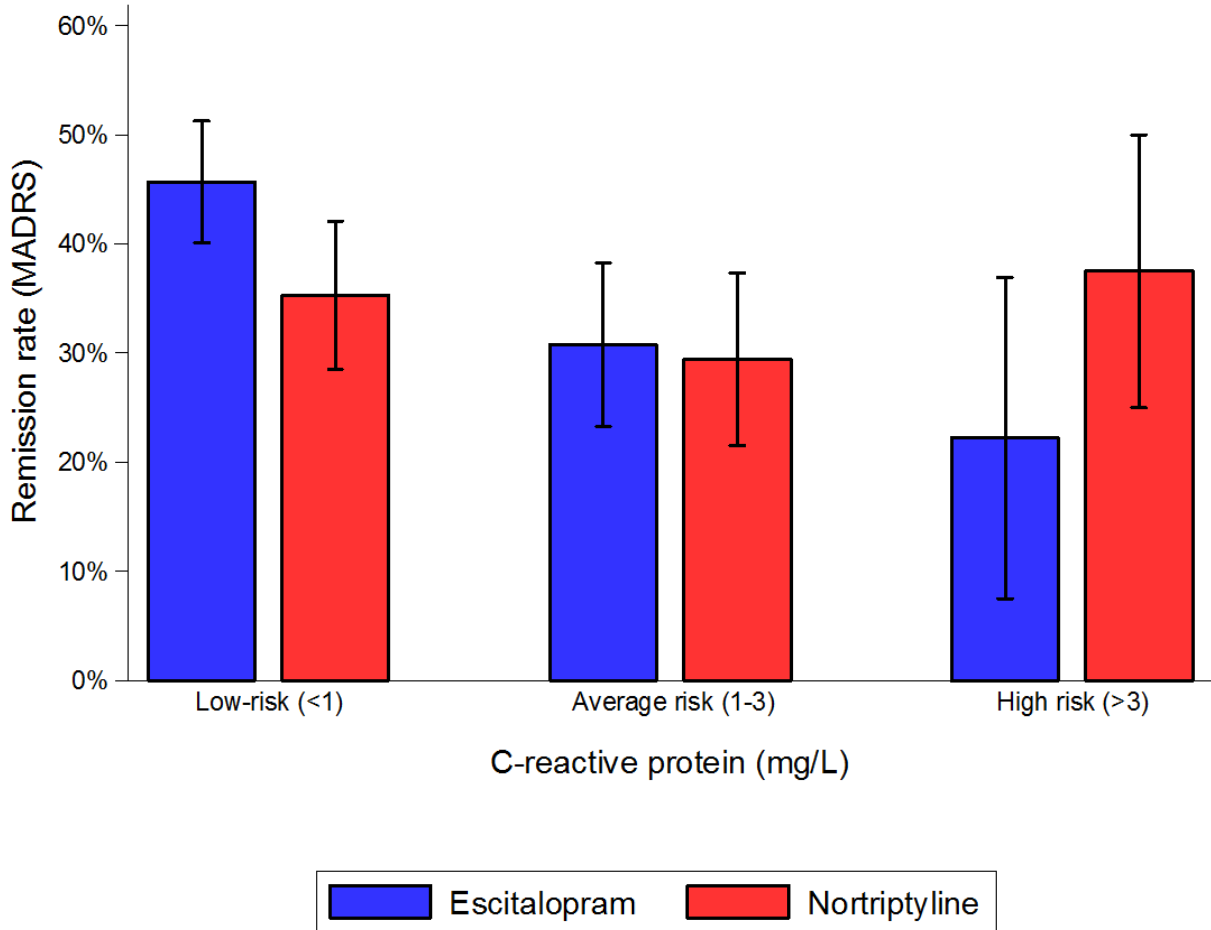
Left panel shows distribution of CRP in serum as measured (linear scale). The right panel shows distribution of the same values of CRP after natural logarithmic transformation. Reference bands of CRP values according to the U.S. Centers for Disease Control and Prevention and the American Heart Association are marked by horizontal lines.

TABLE S1. Correlations Between C-Reactive Protein and Depressive Symptom Dimensions at Baseline

Symptom dimension	Correlation with	
	lnCRP	p
<u>Higher-order dimensions</u>		
Observed mood	0.07	0.26
Neurovegetative	0.02	0.70
Cognitive	0.03	0.61
<u>Lower-order dimensions</u>		
Mood	0.04	0.56
Anxiety	0.04	0.55
Sleep	0.01	0.90
Appetite	0.00	0.99
Pessimism	0.02	0.75
Interest-activity	0.11	0.09

Depressive symptom dimensions are drawn from a published factor analysis (R. Uher et al., Measuring depression: comparison and integration of three scales in the GENDEP study. Psychol Med 2008; 38:289–300). “Correlation” is the Pearson's product-moment correlation coefficient of each dimension with lnCRP at baseline.

FIGURE S3. Rates of Remission According to Antidepressant Drug and Baseline C-Reactive Protein Level



Remission was defined as Montgomery-Åsberg Depression Rating Scale (MADRS) score of 10 or less on the last valid measurement occasion in the 12-week treatment period. Error bars represent standard error of remission rate.

TABLE S2. Interaction Between C-Reactive Protein and Antidepressant Drug on Symptom Dimensions

Outcome	Model	β	95% CI	p
Observed mood symptoms	A	0.31	0.16, 0.47	0.0001
Cognitive symptoms	A	0.36	0.19, 0.53	0.0000
Neurovegetative symptoms	A	0.22	0.07, 0.38	0.0056

Model A covariates were baseline depression severity (same measure as outcome), age, sex, drug, CRP level, time in study (linear and quadratic), and recruitment center; the model had no exclusions; N=241. β =interaction regression coefficient showing differential change by drug in points of the outcome scale per one standard deviation of the logarithmically transformed C-reactive protein.