

TITLES AND LEGENDS TO SUPPLEMENTAL FIGURES

Figure SF1. Correlation between SRS raw total scores contributed by parent vs. teacher respondents.

Figure SF2. Non-parametric linkage scan for social responsiveness in 536 families from AGRE using parent reports. Gray and black dotted lines denote thresholds for genome-wide suggestive ($\text{LOD} \geq 2.2$) and significant ($\text{LOD} \geq 3.6$) evidence for complex trait linkage, respectively.

Figure SF3. Genome-wide significant linkage for SRS on chr8p23.1 and chr8q24.22 using parent reports. Gray “x” indicates association signal for SRS as a quantitative trait using imputed genotype data.

SUPPLEMENTAL FIGURES

Figure SF1

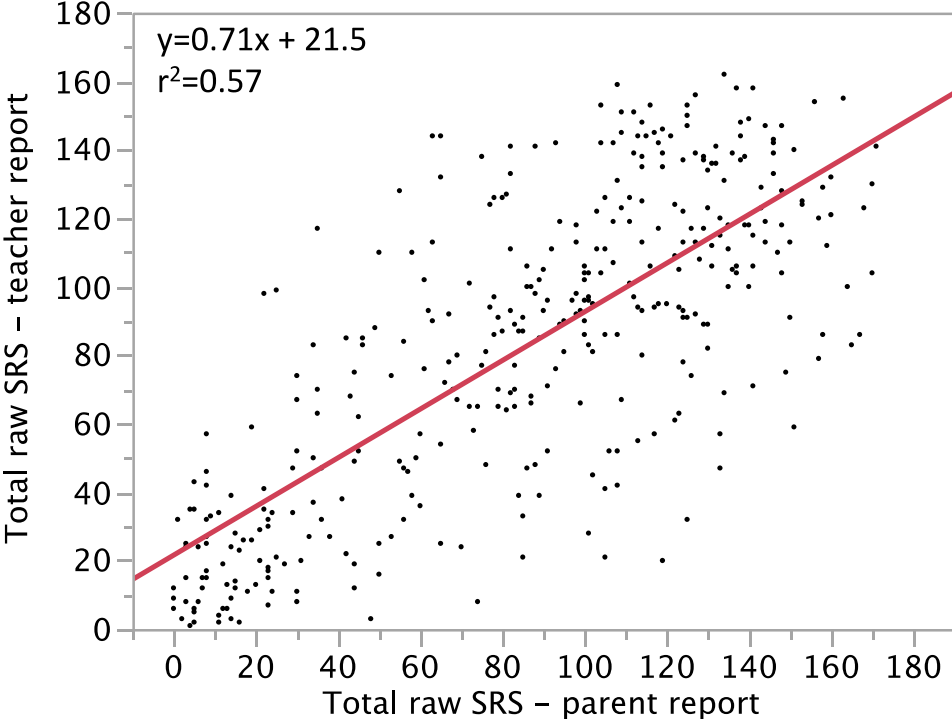


Figure SF2

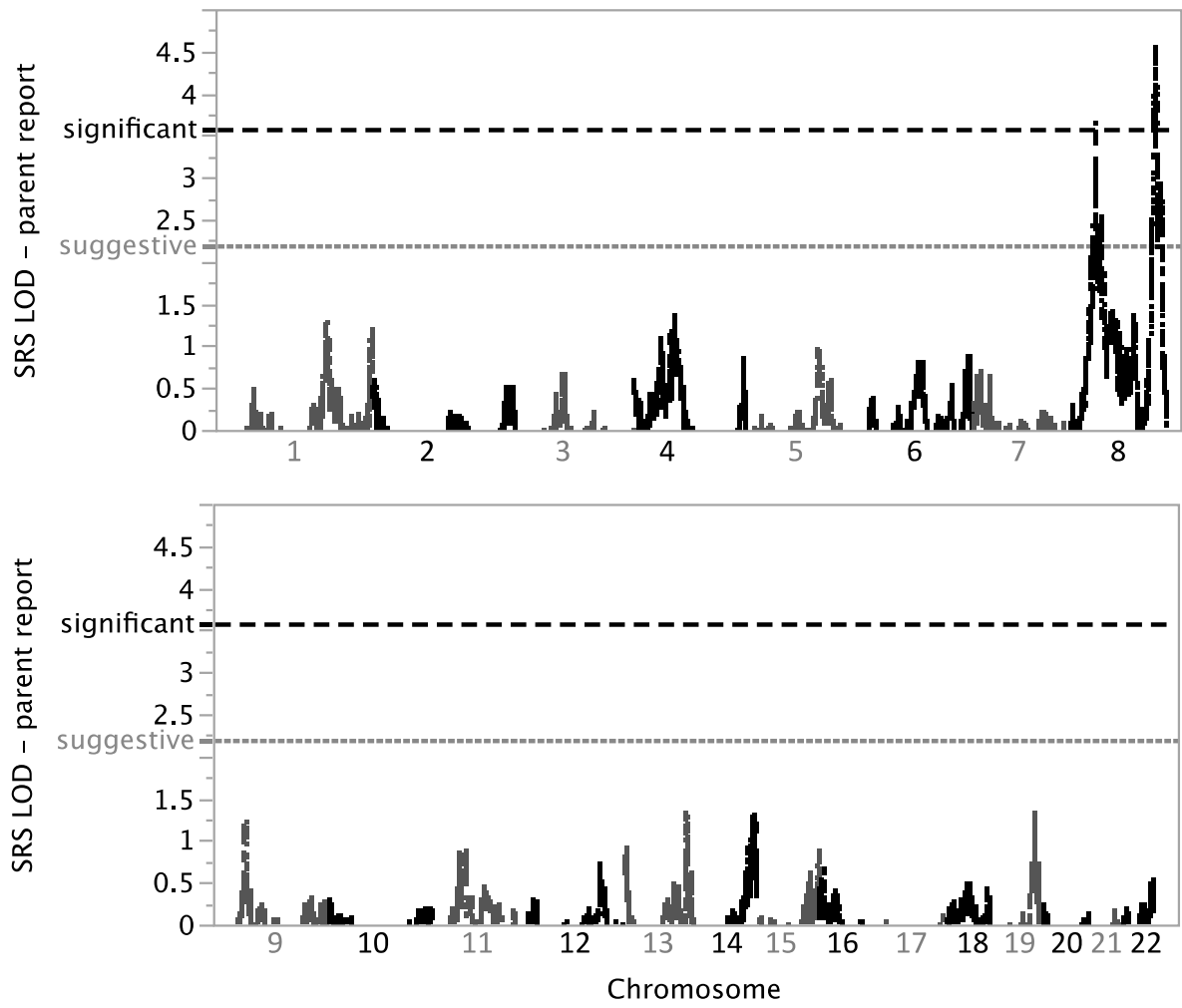


Figure SF3

