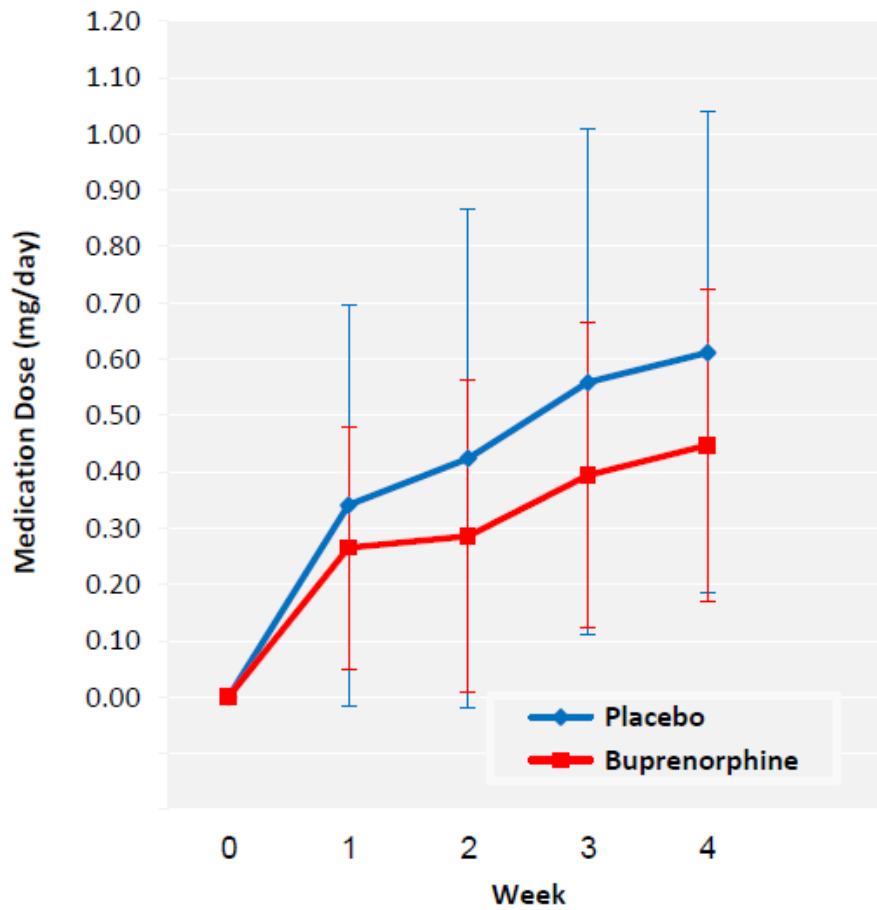


FIGURE S1. Study Medication Doses in Patients who Received Buprenorphine or Placebo^a



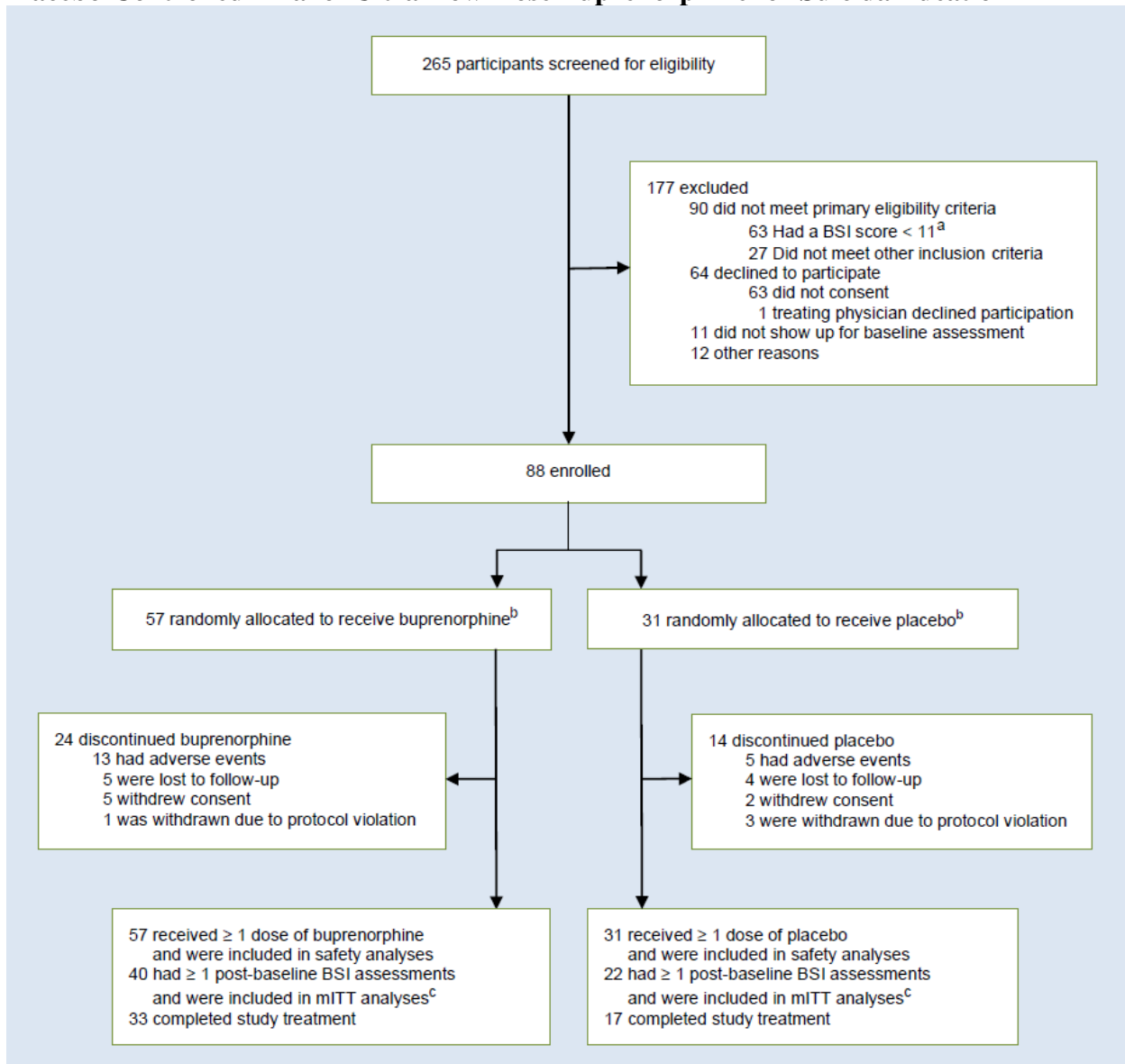
^a Modified intention-to-treat group. The error bars indicate standard deviations. Differences in medication doses between the buprenorphine and placebo groups were not significant in both a week-by-week comparison and in an overall dose comparison.

TABLE S1. Psychotropic Medications Taken by Patients in the Buprenorphine and Placebo Groups Upon Enrollment and During the Study Period

Psychotropic Medications	Buprenorphine (N=57)	Placebo (N=31)
Antidepressants	40 (70.2)	22 (71.0)
SSRI's	24 (42.1)	11 (35.5)
Citalopram	16 (28.1)	9 (29.0)
Paroxetine	5 (8.8)	0 (0.0)
Fluoxetine	2 (3.5)	1 (3.2)
Sertraline	1 (1.8)	1 (3.2)
SNRI's	10 (17.5)	8 (25.8)
Venlafaxine	5 (8.8)	4 (12.9)
Milnacipran	3 (5.3)	0 (0.0)
Duloxetine	2 (3.5)	4 (12.9)
Trazodone	5 (8.8)	0 (0.0)
Mirtazapine	3 (5.3)	1 (3.2)
Bupropion	2 (3.5)	1 (3.2)
Clomipramine	1 (1.8)	0 (0.0)
Reboxetine	1 (1.8)	2 (6.5)
Hypericum	0 (0.0)	1 (3.2)
Benzodiazepines / Hypnotics	31 (54.4)	12 (38.7)
Clonazepam	14 (24.6)	7 (22.6)
Alprazolam	4 (7.0)	2 (6.5)
Oxazepam	5 (8.8)	1 (3.2)
Brotizolam	4 (7.0)	1 (3.2)
Zopiclone	4 (7.0)	3 (9.7)
Nitrazepam	3 (5.3)	1 (3.2)
Diazepam	3 (5.3)	0 (0.0)
Lorazepam	2 (3.5)	0 (0.0)
Mood stabilizers / Anticonvulsants	9 (15.8)	6 (19.4)
Lamotrigine	5 (8.8)	4 (12.9)
Lithium	2 (3.5)	0 (0.0)
Pregabalin	1 (1.8)	1 (3.2)
Valproic acid	1 (1.8)	0 (0.0)
Carbamazepine	0 (0.0)	1 (3.2)
Antipsychotics	14 (24.6)	4 (12.9)
Quetiapine	8 (14.0)	2 (6.5)
Clotiapine	2 (3.5)	0 (0.0)
Olanzapine	2 (3.5)	0 (0.0)
Perphenazine	1 (1.8)	2 (6.5)
Aripiprazole	1 (1.8)	0 (0.0)

Data are n (%). Participants who were taking more than one psychotropic medication were counted in every medication they were taking. SSRI's=selective serotonin-reuptake inhibitors. SNRI's=serotonin-norepinephrine reuptake inhibitors. Of the 62 participants who were taking antidepressant medications upon enrollment to the study, 51 (82%) were taking them for over 1 year.

FIGURE S2. CONSORT Flow Diagram of Participants in a Double-Blind, Randomized, Placebo-Controlled Trial of Ultra-Low-Dose Buprenorphine for Suicidal Ideation

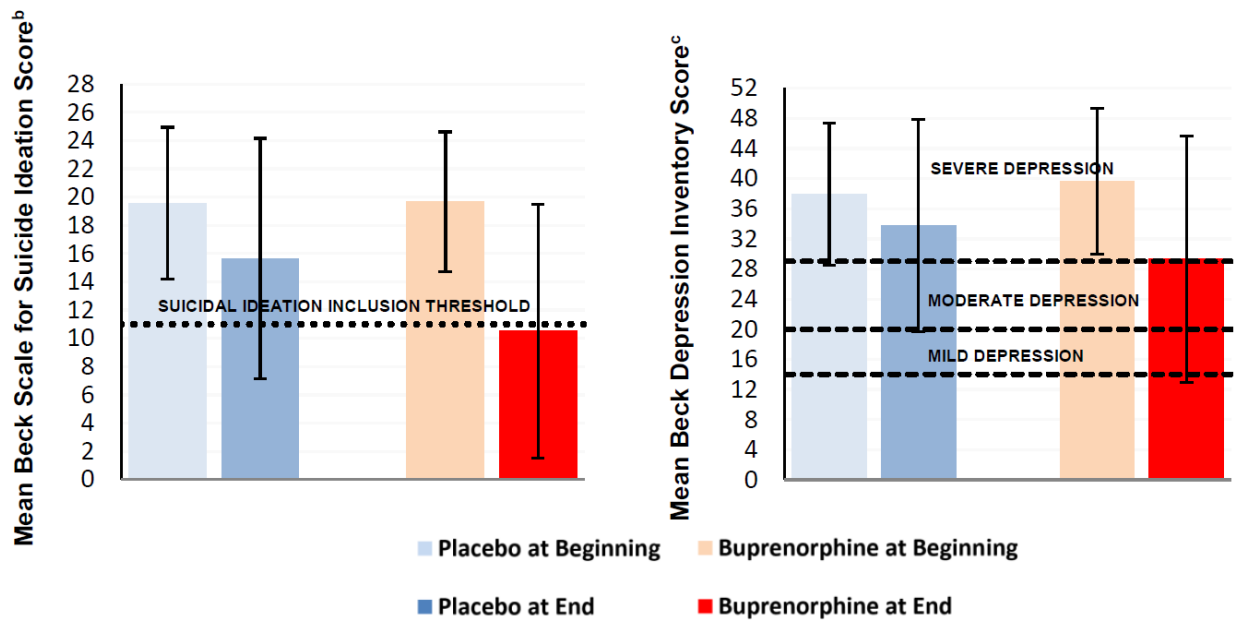


^a BSI=Beck Scale for Suicide Ideation.

^b Randomized at 2:1 ratio (buprenorphine:placebo).

^c mITT=modified intention-to-treat. No differences were found in the baseline demographic and clinical characteristics of participants included in the mITT analyses compared with those who were not included.

FIGURE S3. Beck Scale for Suicide Ideation and Beck Depression Inventory Scores at the Beginning and End of Treatment^a

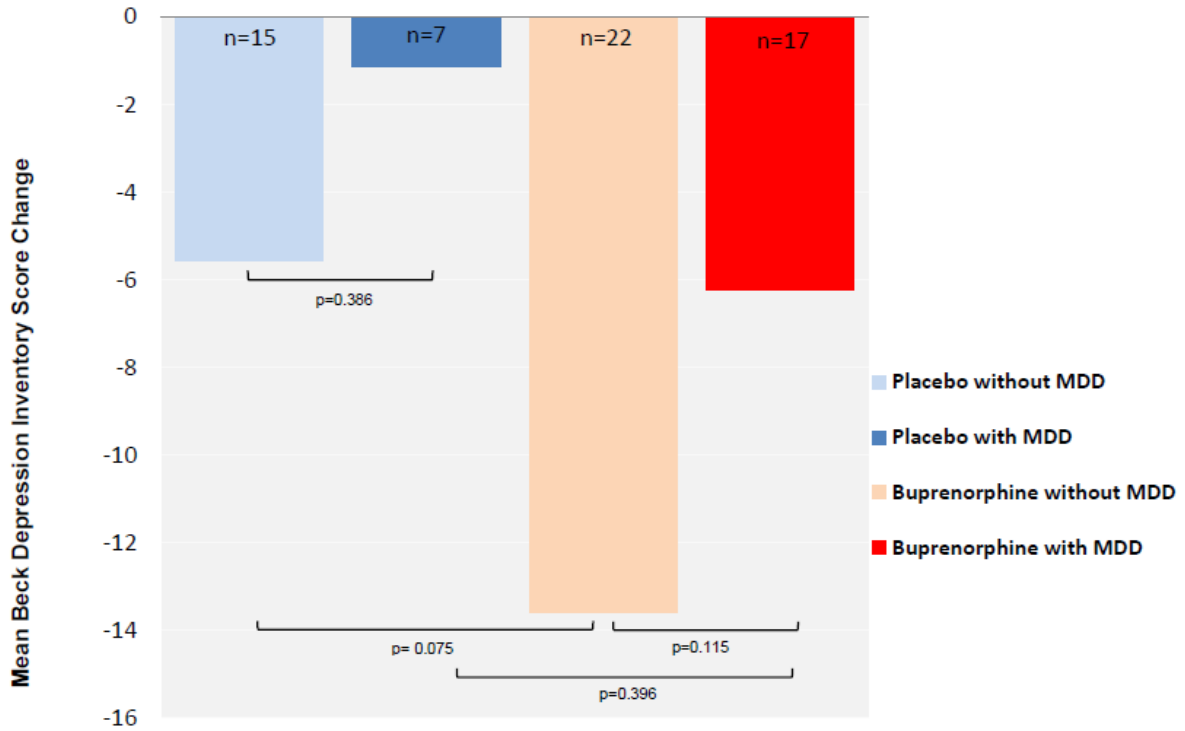


^a Modified intention-to-treat group. Values are group means at the beginning and end of treatment, last observation carried forward. The error bars indicate standard deviations. Lowest score is best.

^b Mean Beck Scale for Suicide Ideation scores in the buprenorphine group decreased by about 50% during treatment, to a score slightly below the suicidal ideation inclusion threshold for this study (Clum and Yang, 1995).

^c Mean Beck Depression Inventory scores in the buprenorphine group decreased by about 25% during treatment, to a score still in the “moderate-to-severe depression” range (Beck et al., 1996).

FIGURE S4. Changes from Baseline to Endpoint (Last Observation Carried Forward) in Beck Depression Inventory Scores of Patients With and Without Depression who Received Buprenorphine or Placebo^a



^a Modified intention-to-treat group. Lowest score is best. MDD=Major depressive disorder

TABLE S2. Adverse Events in Patients with Suicidal Ideation Receiving Buprenorphine or Placebo^a

Adverse Events	Buprenorphine (N=57)		Placebo (N=31)	
	N	%	N	%
Non-Serious				
Fatigue	28	49.1	7	22.6
Dizziness	23	40.4	7	22.6
Nausea	21	36.8	4	12.9
Headache	18	31.6	6	19.4
Dry mouth	17	29.8	3	9.7
Constipation	15	26.3	3	9.7
Weakness	15	26.3	6	19.4
Blurred vision	9	15.8	3	9.7
Sweating	8	14.0	2	6.5
Confusion	7	12.3	3	9.7
Itching	6	10.5	4	12.9
Low blood pressure	6	10.5	2	6.5
Euphoria	6	10.5	1	3.2
Rapid heart rate	5	8.8	2	6.5
Hypoventilation	4	7.0	1	3.2
Slurred speech	4	7.0	3	9.7
Shortness of breath	2	3.5	1	3.2
Vomiting	2	3.5	0	0.0
Serious				
Suicide attempt	1	1.8	1	3.2
Psychiatric hospitalization ^b	0	0.0	1	3.2
Psychosis	2	3.5	1	3.2

^a Safety sample. Participants may have reported more than one event. Events with an incidence of at least 2% in either group are shown.

^b One patient from the placebo group who made a suicide attempt was subsequently hospitalized.