

SUPPLEMENTARY DATA

Effects of Patient Preferences on Outcomes in the Predictors of Remission in Depression to Individual and Combined Treatments (PReDICT) Study

Boadie W. Dunlop, MD¹, Mary E. Kelley, PhD², Vivianne Aponte-Rivera, MD³, Tanja Mletzko-Crowe, MA¹, Becky Kinkead, PhD¹, James C. Ritchie, PhD⁴, Charles B. Nemeroff, MD, PhD⁵, W. Edward Craighead, PhD^{1,6*}, Helen S. Mayberg, MD^{1,7*}, for the PReDICT Team.

CONTENTS: 1 Figure, 5 Tables.

Figure Legends

Figure S1. CONSORT Diagram for PReDICT Study

CBT: cognitive behavior therapy; DUL: duloxetine; ESC: escitalopram

Tables

Table S1. Depression and anxiety rating scale outcomes

Table S2. Outcomes of patients matched and mismatched to preferred treatments

Table S3. Predictors and moderators of remission in the per-protocol completer sample (n=234)

Table S4. Predictors and moderators of remission in the LOCF sample (n=316)

Table S5. Predictors and moderators of completion among all randomized subjects (n=344)

Figure S1. CONSORT Diagram for PRedICT Study

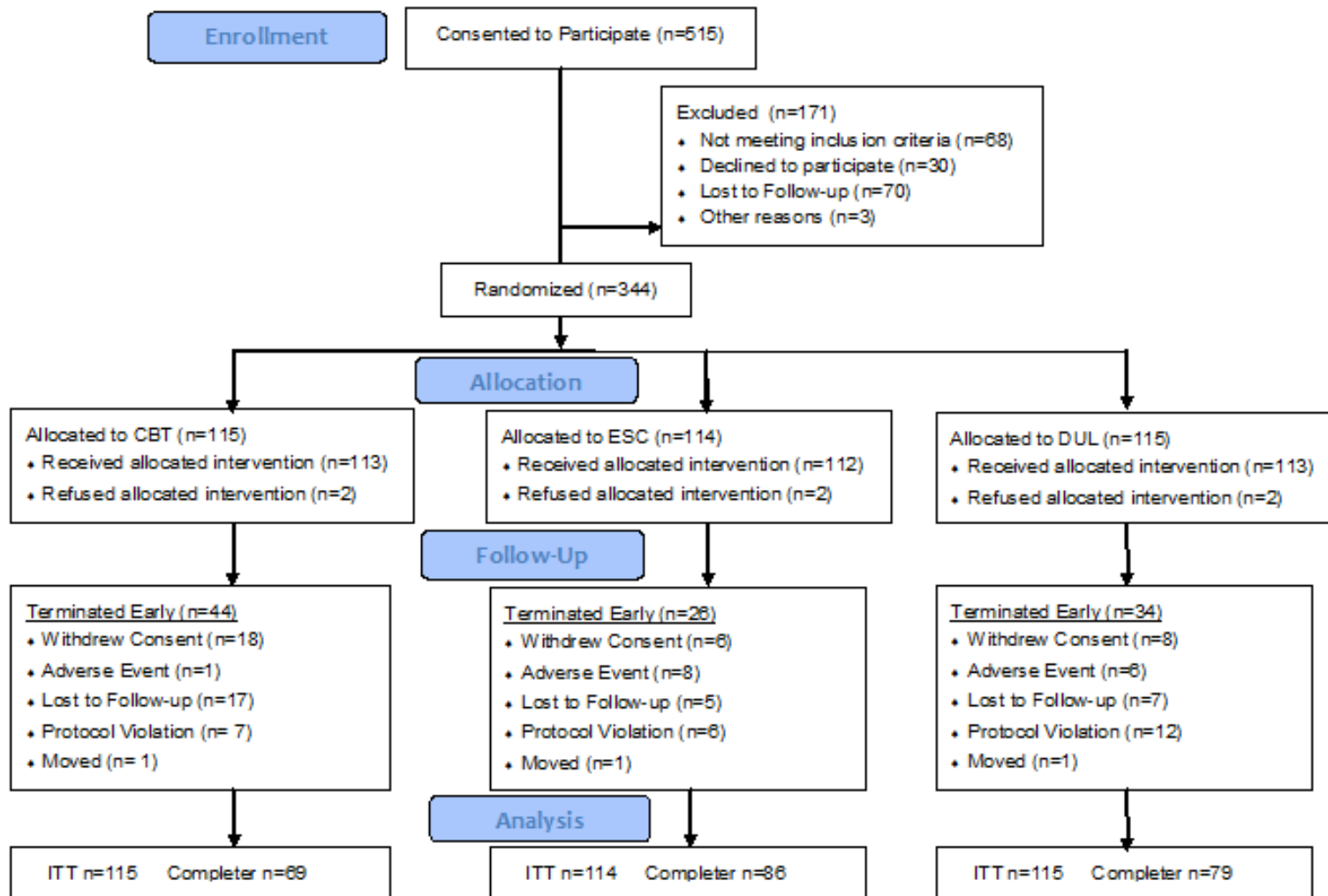


Table S1. Depression and anxiety rating scale outcomes

Intent to Treat Sample (n=344)											
Measure	CBT (n=115)			Escitalopram (n=114)			Duloxetine (n=115)			F	p
	Baseline	Endpoint	Change*	Baseline	Endpoint	Change*	Baseline	Endpoint	Change*		
Maximum n	115	73		114	92		115	86			
HAM-D	19.7 (3.7)	8.8 (7.0)	-10.2	20.1 (3.7)	7.9 (6.1)	-11.1	19.6 (3.9)	7.2 (5.3)	-11.2	0.531	0.589
MADRS	27.2 (5.7)	12.5 (10.6)	-14.5	27.0 (4.9)	11.1 (8.8)	-15.0	26.8 (5.3)	9.3 (8.1)	-15.9	0.535	0.586
BDI	22.2 (7.5)	8.6 (8.7)	-13.5	23.1 (7.2)	7.1 (7.3)	-14.2	23.4 (7.3)	6.6 (6.5)	-14.7	0.389	0.678
QIDS-SR	13.9 (4.0)	6.0 (4.8)	-7.7	14.1 (3.9)	5.5 (4.2)	-7.8	14.0 (4.2)	5.0 (4.1)	-8.2	0.268	0.765
HAM-A	16.2 (4.9)	7.7 (5.8)	-7.8	16.6 (5.4)	7.1 (6.0)	-8.5	15.3 (5.2)	5.9 (5.1)	-8.4	0.319	0.727

Per-Protocol Completer Sample (n=234)											
Measure	CBT (n= 69)			Escitalopram (n= 86)			Duloxetine (n= 79)			F	p
	Baseline	Endpoint	Change	Baseline	Endpoint	Change	Baseline	Endpoint	Change		
HAM-D	18.8 (3.4)	8.7 (6.9)	-9.8	19.7 (3.6)	7.5 (6.0)	-11.1	18.9 (3.4)	7.2 (5.3)	-10.6	0.883	0.415
MADRS	26.0 (4.7)	12.2 (10.2)	-14.3	26.6 (4.7)	10.5 (8.8)	-15.0	26.2 (4.8)	9.3 (8.1)	-15.5	0.349	0.706
BDI	21.3 (6.9)	8.3 (8.1)	-12.9	22.6 (6.8)	6.7 (7.1)	-13.8	23.3 (6.9)	6.7 (6.6)	-13.9	0.357	0.700
QIDS-SR	13.2 (3.6)	5.9 (4.6)	-7.1	14.1 (3.7)	5.2 (4.0)	-7.8	13.9 (3.9)	4.9 (3.9)	-7.8	0.578	0.557
HAM-A	15.3 (4.2)	7.4 (5.5)	-7.4	16.3 (5.2)	6.9 (6.0)	-8.5	14.5 (4.5)	5.9 (5.0)	-7.9	0.778	0.461

* Change based on model estimates from growth curve model of bi-monthly data.

BDI: Beck Depression Inventory; CBT: cognitive behavior therapy; HAM-A: Hamilton Anxiety Rating Scale; HAM-D: 17-item Hamilton Depression Rating Scale; MADRS: Montgomery Asberg Depression Rating Scale; QIDS-SR: Quick Inventory of Depressive Symptoms, Self-Report

Table S2. Outcomes of patients matched and mismatched to preferred treatments

Outcome	Mismatched to Preference			Matched to Preference		
	Preferred CBT, received ADM N (%)	Preferred ADM, received CBT N (%)	Any preference N (%)	CBT N (%)	ADM N (%)	Any preference N (%)
Remitted	33 (44.6)	10 (33.3)	43 (41.3)	21 (55.3)	31 (47.7)	52 (50.5)
Not Remitted	41 (55.4)	20 (66.7)	61 (58.7)	17 (44.7)	34 (52.3)	51 (49.5)
TOTAL	74 (100)	30 (100)	104 (100)	38 (100)	65 (100)	103 (100)

CBT: Cognitive behavior therapy

Remission defined by 17-item HAM-D score ≤ 7 at both weeks 10 and 12.

Note: The raw percentages shown were weighted to calculate the odds ratios reported in Table 3

Table S3. Predictors and Moderators of Remission in the Per-Protocol Completer sample (n=234)

Variable	Predictor effect			Predictor x Treatment interaction effect		
	Wald X ²	df	p	Wald X ²	df	p
Severity (HAM-D)	4.394	1	0.036*	0.521	2	0.771
Chronic episode	0.016	1	0.899	2.539	2	0.281
Age	2.258	1	0.133	1.211	2	0.546
Anxiety (HAM-A)	8.652	1	0.003*	0.525	2	0.769
Current Anxiety Disorder	6.031	1	0.014*	0.063	2	0.969
Gender	2.976	1	0.085	0.067	2	0.967
Race	0.410	2	0.815	8.150	4	0.086
Married/cohabitating	1.785	1	0.182	0.683	2	0.711
Employed full time	0.047	1	0.828	4.161	2	0.125

* p<.05

Table S4. Predictors and Moderators of Remission in the LOCF sample (n=316)

Variable	Predictor effect			Predictor x Treatment interaction effect		
	Wald X ²	df	p	Wald X ²	df	p
Severity (HAM-D)	11.254	1	0.001*	3.389	2	0.184
Chronic episode	0.045	1	0.833	0.348	2	0.840
Age	2.386	1	0.122	0.174	2	0.917
Anxiety (HAM-A)	15.947	1	<0.0005*	0.214	2	0.899
Current Anxiety Disorder	4.852	1	0.028*	0.516	2	0.773
Gender	1.317	1	0.251	0.595	2	0.743
Race	0.057	2	0.972	6.195	4	0.185
Married/cohabitating	1.922	1	0.166	2.418	2	0.299
Employed full time	0.081	1	0.776	2.865	2	0.239

* p<.05

Table S5. Predictors and Moderators of completion among all randomized subjects (n=344)

Variable	Predictor effect			Predictor x Treatment interaction effect		
	Wald X ²	df	p	Wald X ²	df	p
Severity (HAM-D)	21.473	1	<0.0005*	0.462	2	0.794
Chronic episode	0.072	1	0.789	3.155	2	0.206
Age	0.137	1	0.711	0.654	2	0.721
Anxiety (HAM-A)	10.188	1	0.001*	1.107	2	0.575
Current Anxiety Disorder	0.407	1	0.524	0.789	2	0.674
Gender	0.965	1	0.326	2.967	2	0.227
Race	10.084	2	0.006*	3.430	4	0.489
Married/cohabitating	0.101	1	0.750	0.565	2	0.754
Employed full time	2.315	1	0.128	0.003	2	0.999

* p<.05