

Clinical Global Impressions (CGI) Scale

Severity

- 0: Not assessed
- 1: Normal, not at all.
- 2: Borderline mentally ill: BMI > 18.5, eating behavior is generally normal, mood is good
- 3: Mildly ill: BMI > 17.5, occasional eating-disordered behaviors
- 4: Moderately ill: BMI > 16.5, eating-disordered behaviors present, but engaged in non-ED activities
- 5: Markedly ill: BMI < 16.5, eating-disordered behaviors present, which interfere with other; activities; other psychological symptoms present
- 6: Severely ill: BMI < 16.5, eating-disordered behaviors and other psychological symptoms present; significant medical and/or functional compromise
- 7: Among the most extremely ill patients; probably needs higher level of care

Improvement

- 0: Not assessed
- 1: Very much improved: Better weight/BMI, better eating behavior, better mood/anxiety symptoms
- 2: Much improved: 2 of 3 of above
- 3: Minimally improved: Improvement in one area or by patient report
- 4: No change: No change
- 5: Minimally worse: Weight < 5% less than baseline, increased frequency of eating-disordered behaviors or mild other psychological symptoms
- 6: Much worse: Weight > 5% less than baseline, daily increase from baseline of eating disordered behaviors, significant psychological or medical signs or symptoms
- 7: Very much worse: Weight > 10% less than baseline, eating-disordered behaviors or other psychological or medical symptoms increased from baseline; medically significant findings; significant interruptions to functioning

TABLE S1. Per-protocol estimate of change per month of BMI and psychological measures in olanzapine and placebo groups

	Olanzapine (n=75)	Placebo (n=77)	
BMI	0.199	0.015	$F_{[1,1403]} = 5.77; p = 0.02$
YBOCS, total	-0.942	-0.830	$F_{[1,79]} = 0.04; p = 0.85$
YBOCS, obsessions	-0.425	-0.200	$F_{[1,79]} = 0.45; p = 0.50$
YBOCS, compulsions	-0.546	-0.596	$F_{[1,79]} = 0.02; p = 0.88$
EDE, weight concerns	-0.049	-0.073	$F_{[1,79]} = 0.10, p = 0.76$
EDE, restraint	-0.075	-0.095	$F_{[1,79]} = 0.07, p = 0.79$
EDE, eating concerns	-0.102	-0.077	$F_{[1,78]} = 0.12, p = 0.73$
EDE, shape concerns	0.042	-0.120	$F_{[1,79]} = 4.29, p = 0.04$
CES-D	-0.638	-1.141	$F_{[1,253]} = 0.46; p = 0.50$
Zung Anxiety	-0.325	-0.327	$F_{[1,237]} = 0.00; p = 0.99$
CGI-Severity*	0.22	0.54	$t_{1330} = 0.87; p = 0.38$
CGI-Improvement†	0.54	0.45	$t_{1123} = 0.16; p = 0.87$

*odds of reduction

†odds of improvement

FIGURE S1. Fractions of patients on olanzapine and placebo remaining in study versus number of days after start of treatment. By Cox proportional hazards analysis, there was no significant difference between the placebo and olanzapine groups to time of study termination.

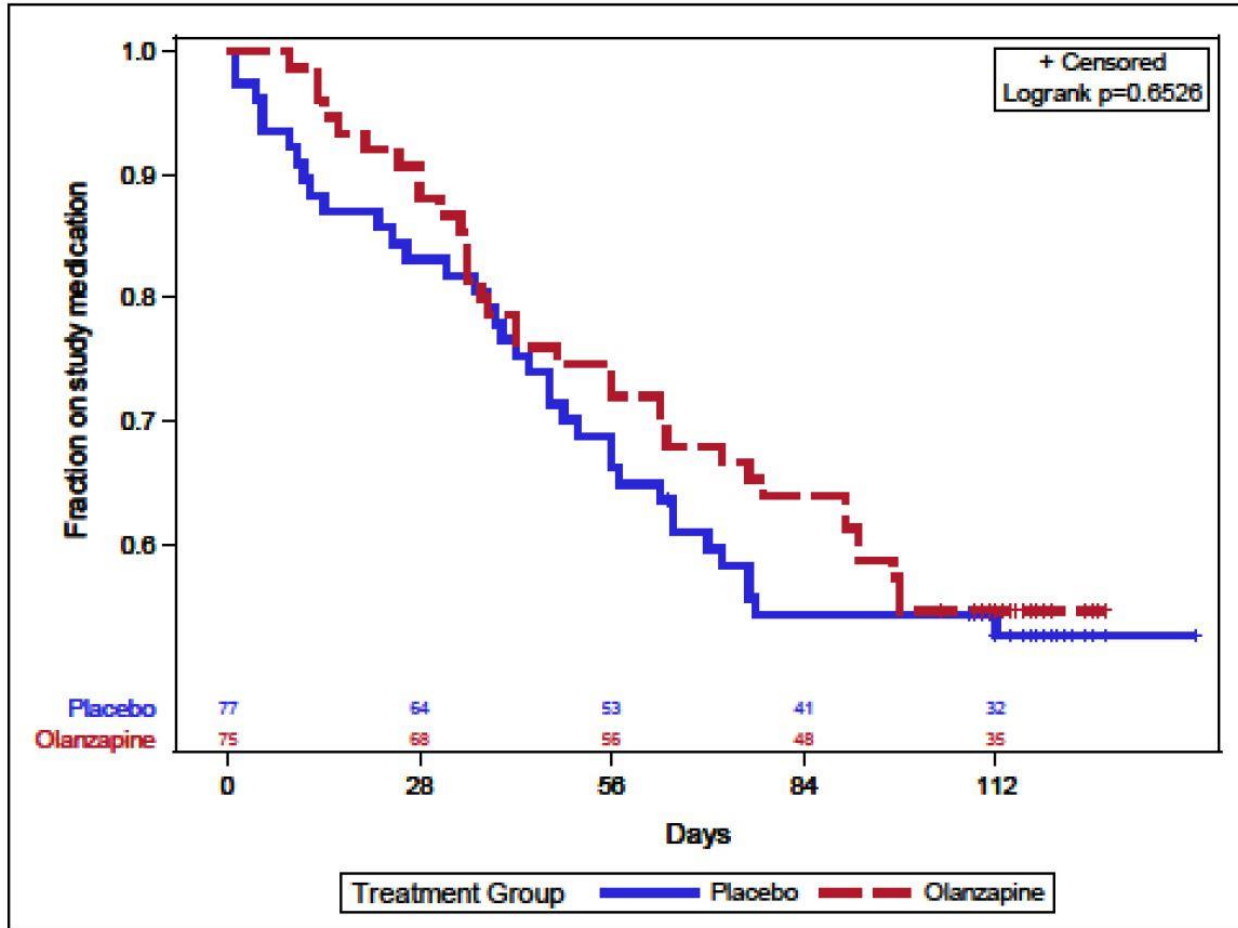


TABLE S2. Percent of patients with abnormal serum metabolic measures at baseline and at study termination in olanzapine and placebo groups.

	Baseline (n = 144- 149)	Termination (n = 103 - 107)		chi- squared	p
		olanzapin e	placebo		
Cholesterol	38.1%	29.1%	28.9%	0.00	0.98
Triglycerides	4.7%	1.8%	3.9%	0.40	0.53
High Density Lipoproteins (HDL)	2.1%	1.8%	4.0%	0.45	0.50
Low Density Lipoproteins (LDL)	9.6%	7.3%	11.8%	0.62	0.43
Cholesterol/HDL ratio	0.7%	1.8%	2.0%	0.00	0.95
Hgb A1C	4.2%	3.6%	10.6%	2.01	0.16
Alanine Aminotransferase (ALT)	20.4%	18.2%	15.4%	0.15	0.70
Aspartate Aminotransferase (AST)	28.2%	23.6%	17.3%	0.66	0.42

TABLE S3. Percent of patients with moderate or severe somatic symptoms at study termination in olanzapine and placebo groups.

Symptom	Olanzapine (n = 62)	Placebo (n = 55)	Chi-squared	p
Headache	4.8%	14.5%	3.22	0.07
Constipation	17.7%	20.0%	0.10	0.75
Nausea or vomiting	8.1%	9.1%	0.04	0.84
Feeling drowsy or sleepy	27.4%	30.9%	0.17	0.68
Increased appetite	8.1%	12.7%	0.69	0.41
Trouble concentrating	14.5%	32.7%	5.45	0.02
Difficulty sitting still	6.5%	18.2%	3.81	0.05
Irregular heartbeat or pounding	3.2%	9.1%	1.78	0.18
Diarrhea	4.8%	1.9%	0.77	0.38
Dry mouth	9.7%	5.6%	0.69	0.41
Decreased appetite	6.5%	5.5%	0.05	0.82
Tremors or shakiness	0.0%	5.5%	3.47	0.06
Skin rash	0.0%	1.8%	1.14	0.29
Increased sweating	1.6%	1.8%	0.01	0.93
Lightheadedness upon standing	14.5%	9.1%	0.81	0.37
Persistent dizziness	1.6%	5.5%	1.30	0.25
Trouble falling asleep	9.7%	30.9%	8.32	0.004
Trouble staying asleep	14.5%	40.0%	9.72	0.002
Nervousness	14.5%	27.3%	2.91	0.09
Decreased interest in sex	1.6%	5.5%	1.30	0.25
Increased interest in sex	1.6%	1.8%	0.01	0.93
Orgasmic dysfunction	3.2%	9.1%	1.78	0.18
Bruising/bleeding	0.0%	1.8%	1.14	0.29
Urinary retention/hesitancy	0.0%	0.0%		
Blurred vision	0.0%	1.8%	1.14	0.29