

Supplemental Figures

CONTENTS

Figure S1. ROI volumes plotted by diagnosis and sex with lines indicating mean values for males and females

Figure S2. ICV by ROI volume plotted separately for 22q11DS and HC

Figure S3. Age by volume plotted separately for 22q11DS and HC

Figure S4. 22q11DS vs. HC adjusted for Age + Age² + Sex + ROI Volume + Site + Typical Antipsychotic + Atypical Antipsychotic + Anticonvulsant + Antidepressant

Figure S5. A-D microdeletion vs. matched HC adjusted for Age + Age² + Sex + ROI Volume + Site + Typical Antipsychotic + Atypical Antipsychotic + Anticonvulsant + Antidepressant

Figure S6. A-B microdeletion vs. matched HC adjusted for Age + Age² + Sex + ROI Volume + Site + Typical Antipsychotic + Atypical Antipsychotic + Anticonvulsant + Antidepressant

Figure S7. A-D microdeletion vs. A-B microdeletion, adjusted for Age + Age² + Sex + ROI Volume + Site + Typical Antipsychotic + Atypical Antipsychotic + Anticonvulsant + Antidepressant

Figure S8. 22q11DS+Psy vs. 22q11DS-Psy, adjusted for Age + Age² + Sex + Site + Typical Antipsychotic + Atypical Antipsychotic + Anticonvulsant + Antidepressant

Figure S9. 22q11DS+Psy vs. 22q11DS-Psy, adjusted for Age + Age² + Sex + Site + ICV

Figure S10. Correlogram plotting Spearman rank correlations between effects size estimates (Cohen's d) across ENIGMA subcortical volume studies

FIGURE S1. ROI volumes plotted by diagnosis and sex with lines indicating mean values for males and females

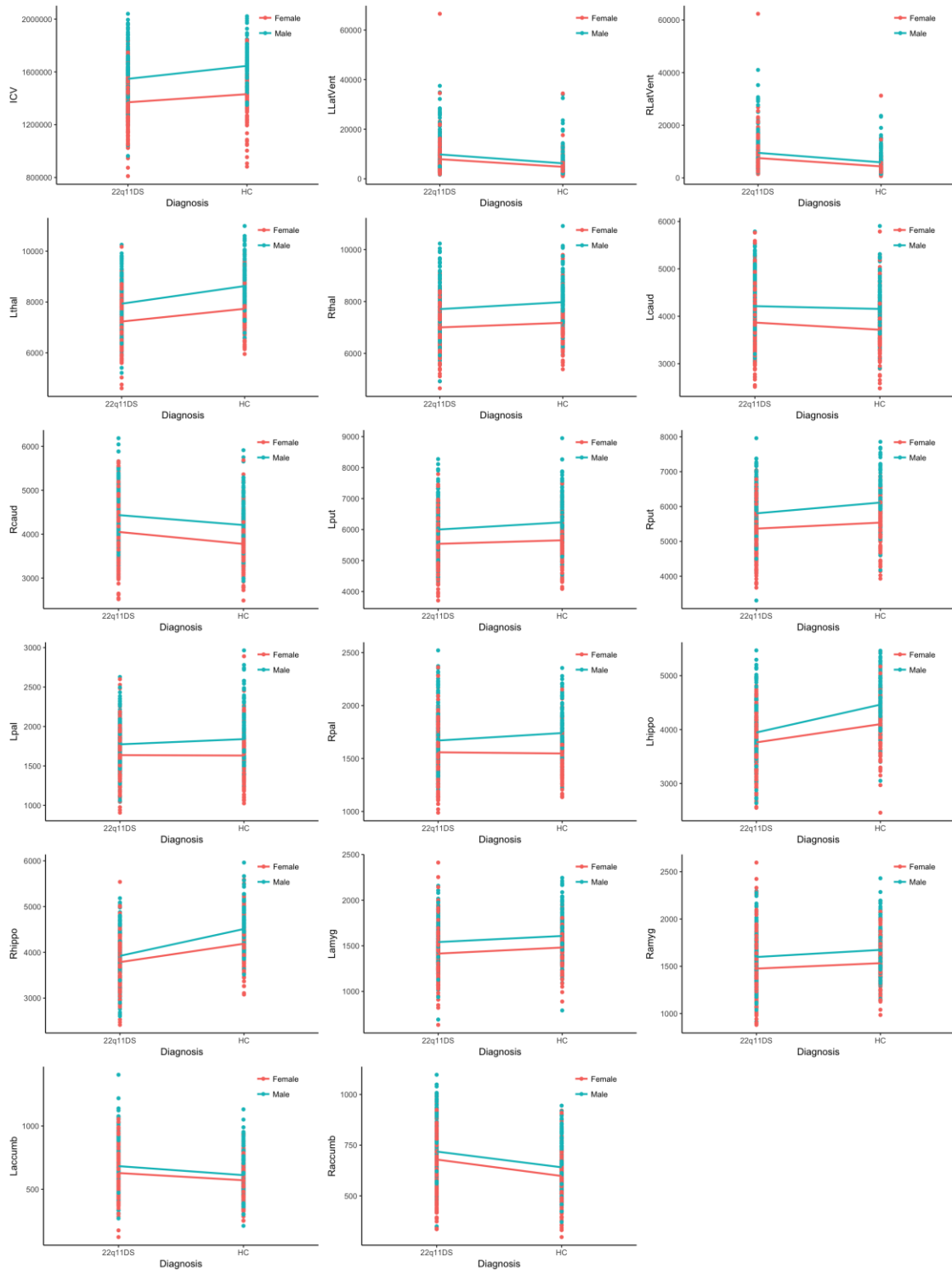


FIGURE S2. ICV by ROI volume plotted separately for 22q11DS and HC

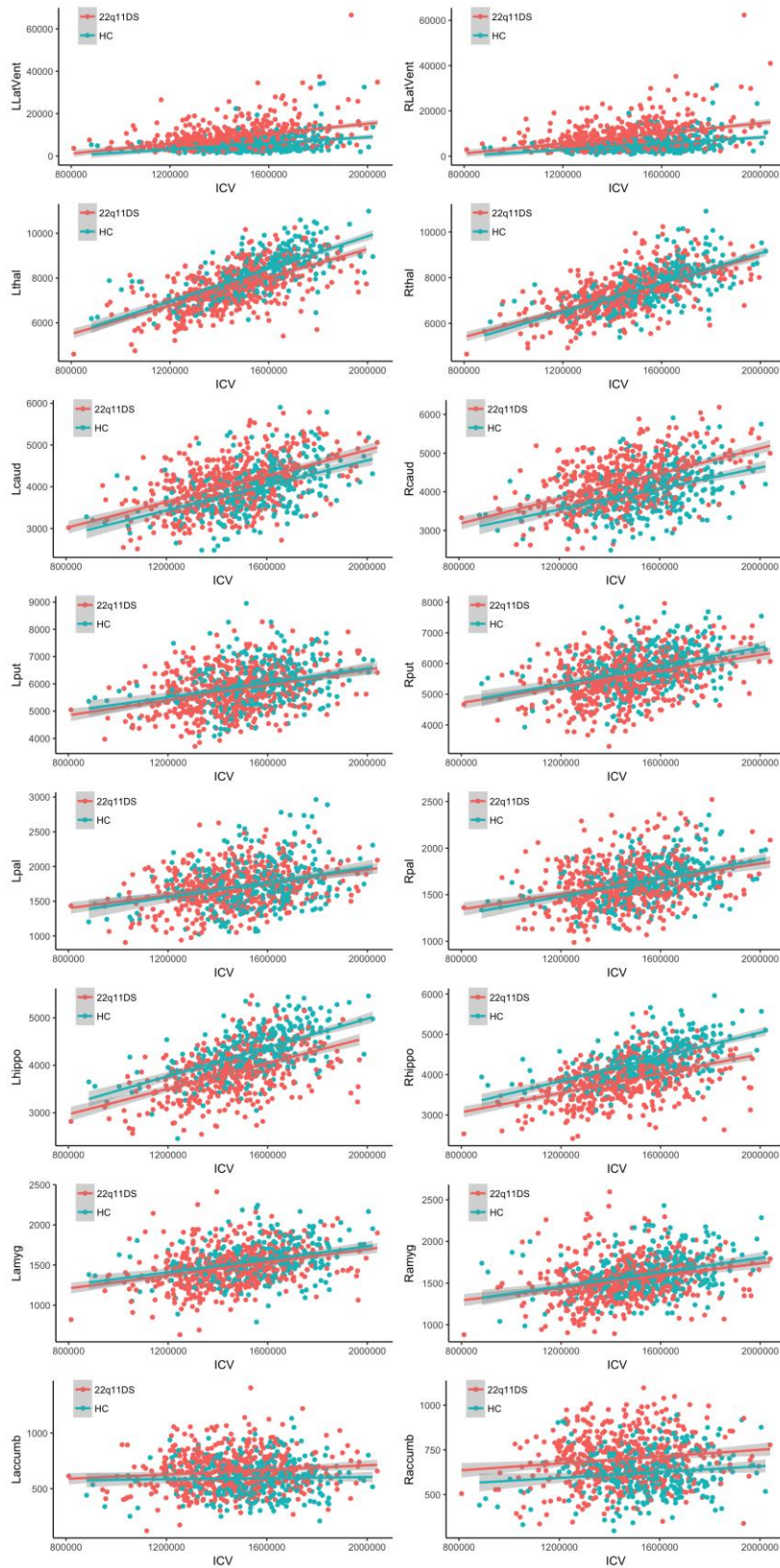


FIGURE S3. Age by volume plotted separately for 22q11DS and HC

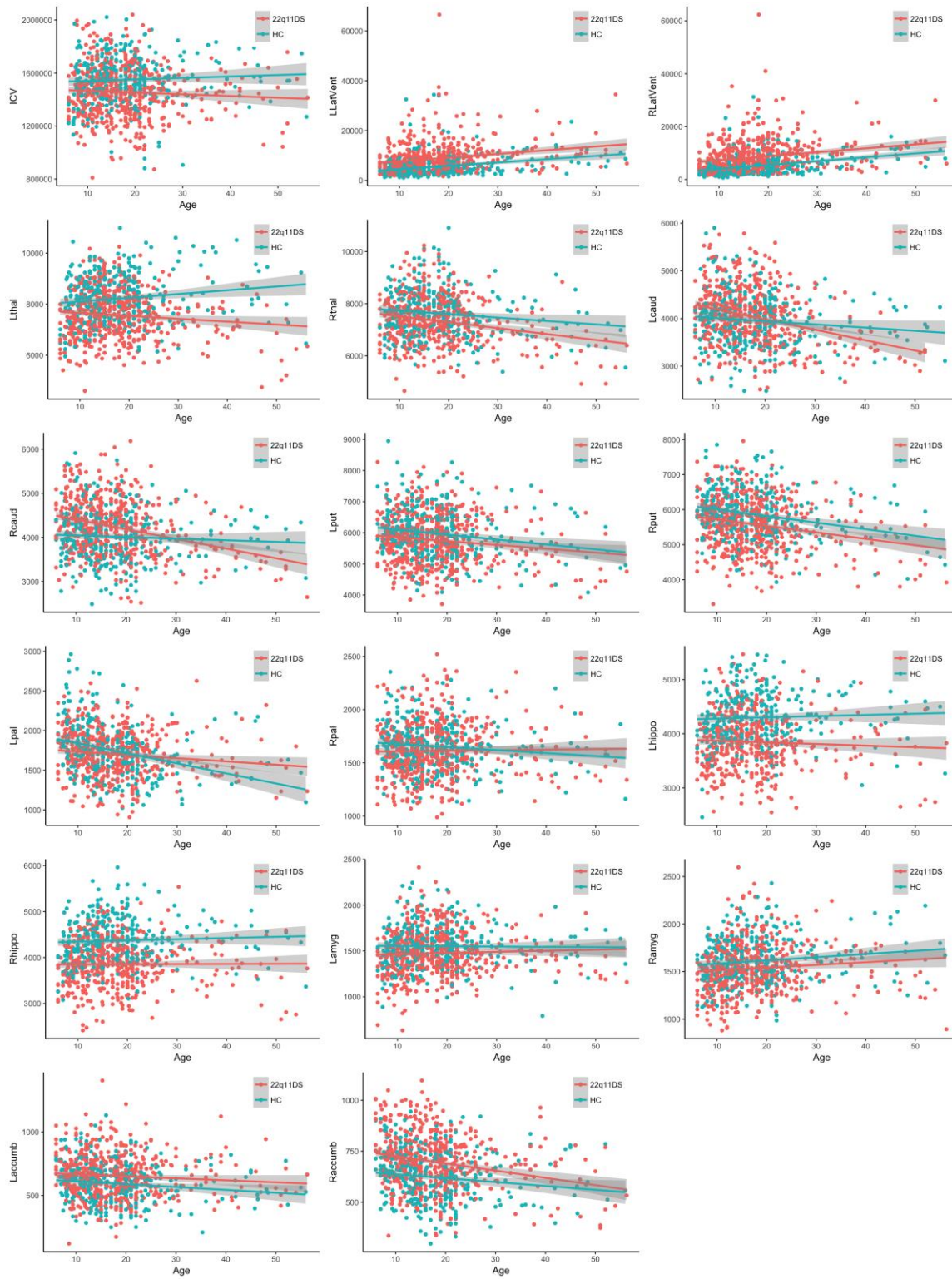


FIGURE S4. 22q11DS vs. HC adjusted for Age + Age² + Sex + ROI Volume + Site + Typical Antipsychotic + Atypical Antipsychotic + Anticonvulsant + Antidepressant. Regression coefficients from statistical model plotted in regions passing correction for multiple comparisons.

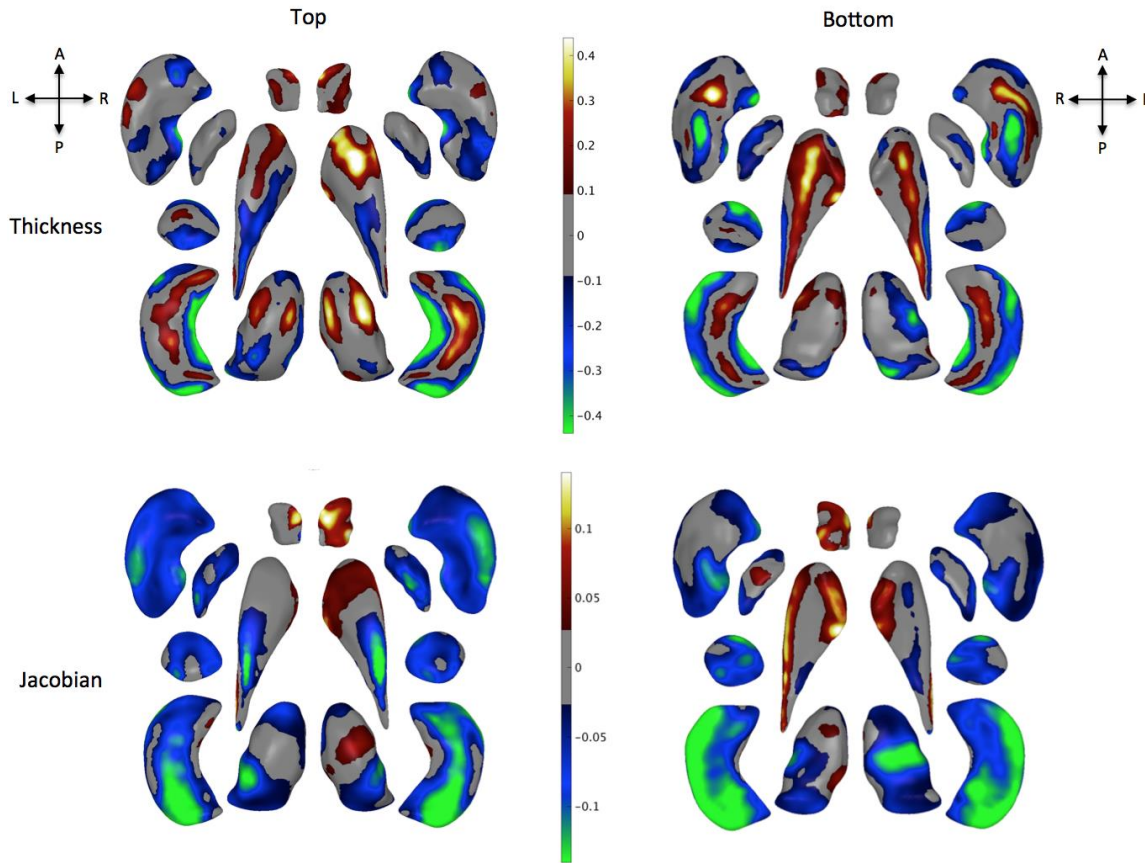


FIGURE S5. A-D microdeletion vs. matched HC adjusted for Age + Age² + Sex + ROI Volume + Site + Typical Antipsychotic + Atypical Antipsychotic + Anticonvulsant + Antidepressant. Regression coefficients from statistical model plotted in regions passing correction for multiple comparisons.

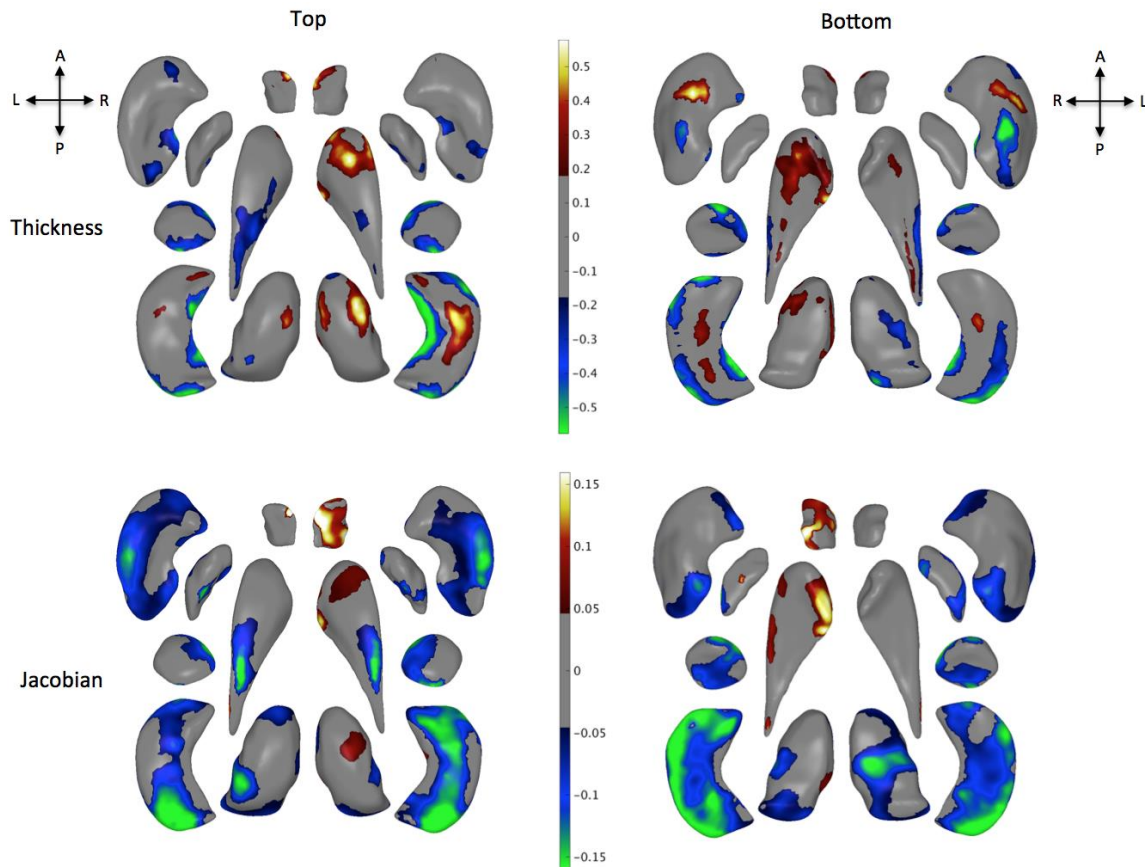


FIGURE S6. A-B microdeletion vs. matched HC adjusted for Age + Age² + Sex + ROI Volume + Site + Typical Antipsychotic + Atypical Antipsychotic + Anticonvulsant + Antidepressant. Regression coefficients from statistical model plotted in regions passing correction for multiple comparisons. Black structures are those where no vertex passed FDR correction.

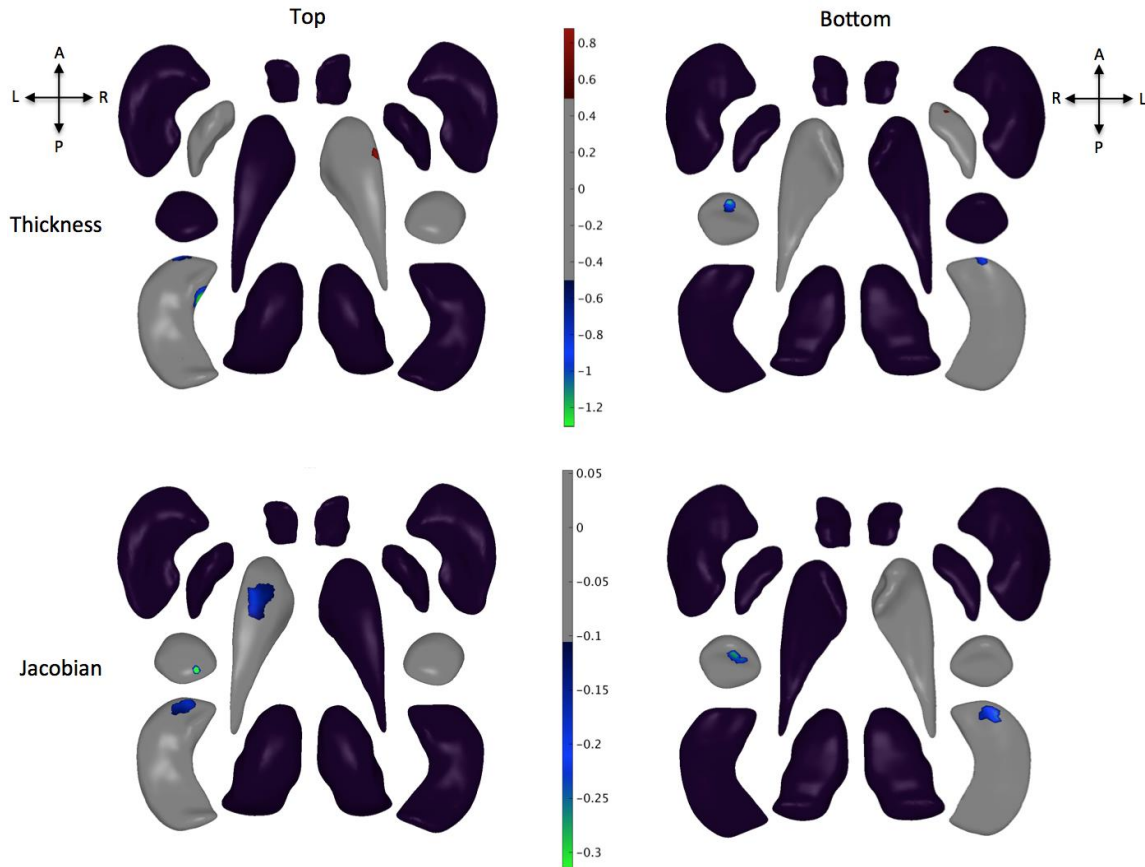


FIGURE S7. A-D microdeletion vs. A-B microdeletion, adjusted for Age + Age² + Sex + ROI Volume + Site + Typical Antipsychotic + Atypical Antipsychotic + Anticonvulsant + Antidepressant. Regression coefficients from statistical model plotted in regions passing correction for multiple comparisons. Black structures are those where no vertex passed FDR correction.

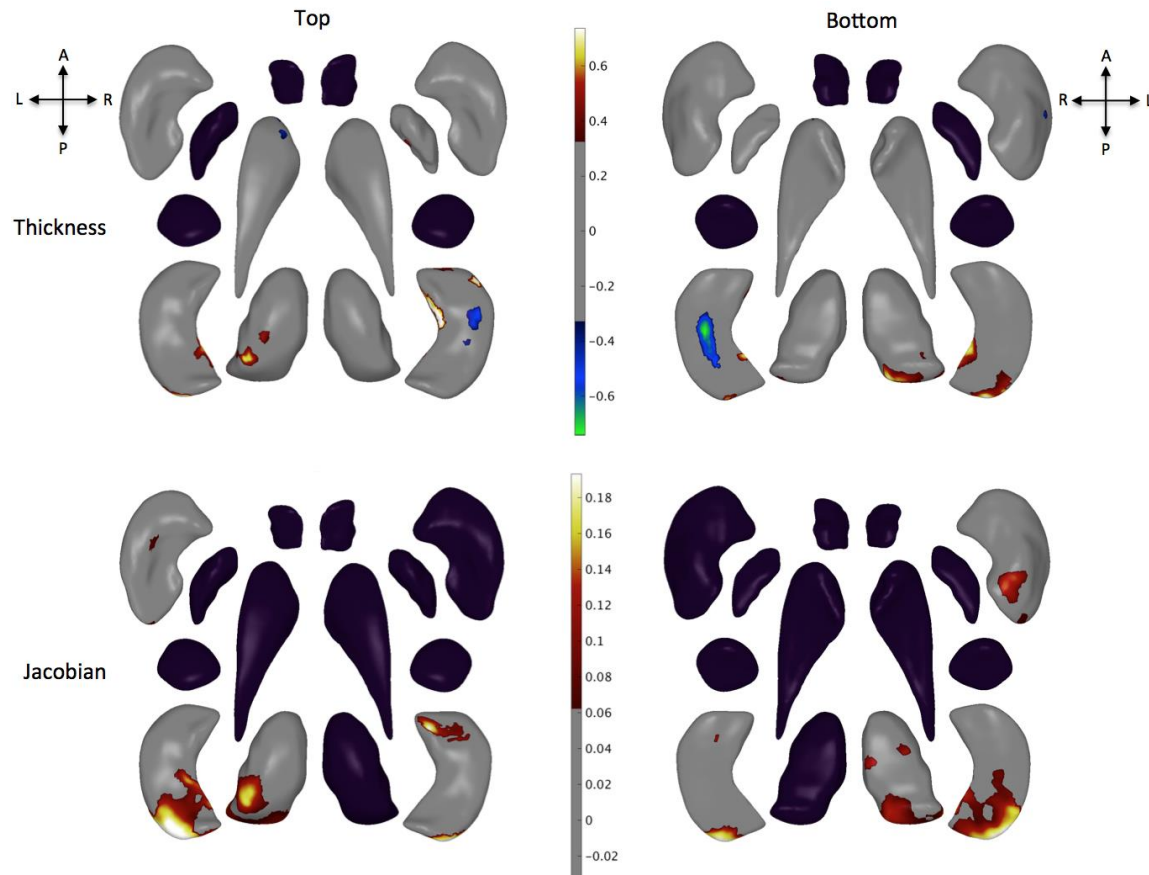


FIGURE S8. 22q11DS+Psy vs. 22q11DS-Psy, adjusted for Age + Age² + Sex + Site + Typical Antipsychotic + Atypical Antipsychotic + Anticonvulsant + Antidepressant. Regression coefficients from statistical model plotted in regions passing correction for multiple comparisons. Black structures are those where no vertex passed FDR correction.

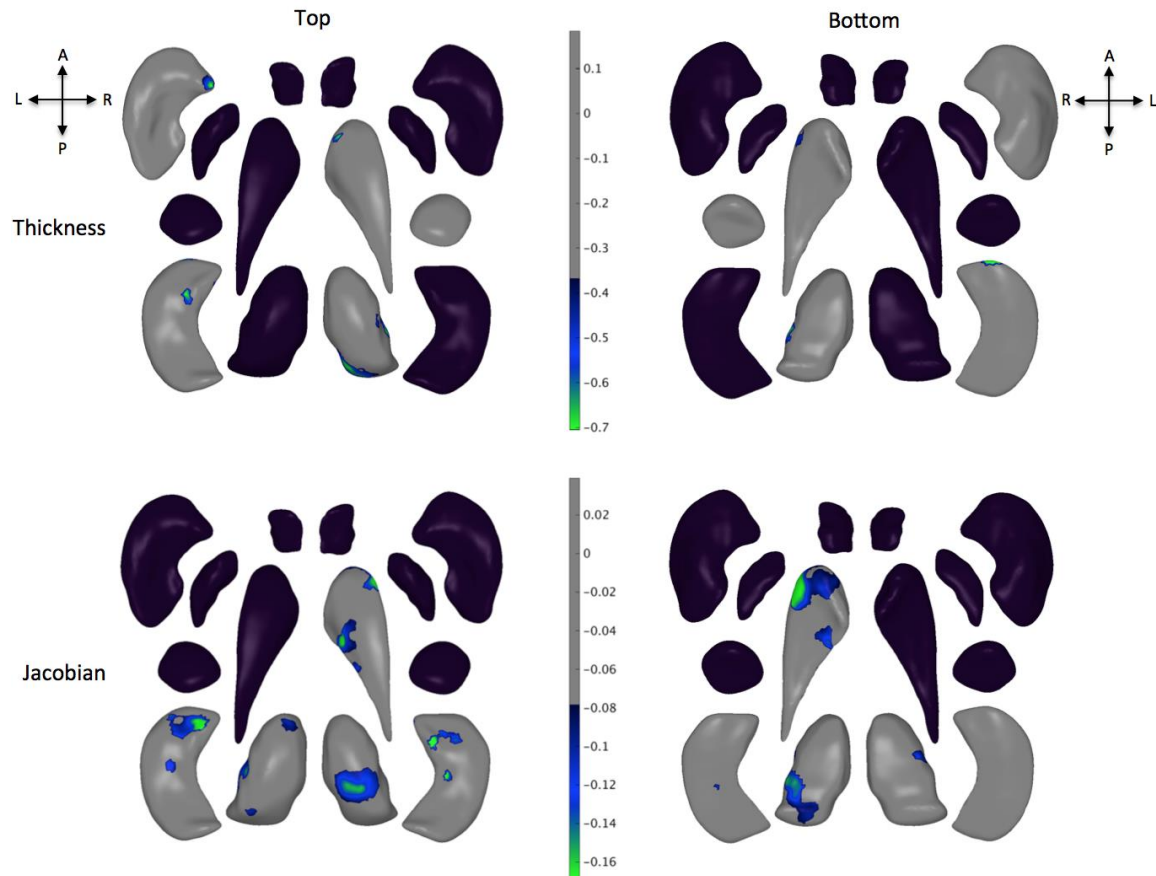


FIGURE S9. 22q11DS+Psy vs. 22q11DS-Psy, adjusted for Age + Age² + Sex + Site + ICV. Regression coefficients from statistical model plotted in regions passing correction for multiple comparisons. Black structures are those where no vertex passed FDR correction.

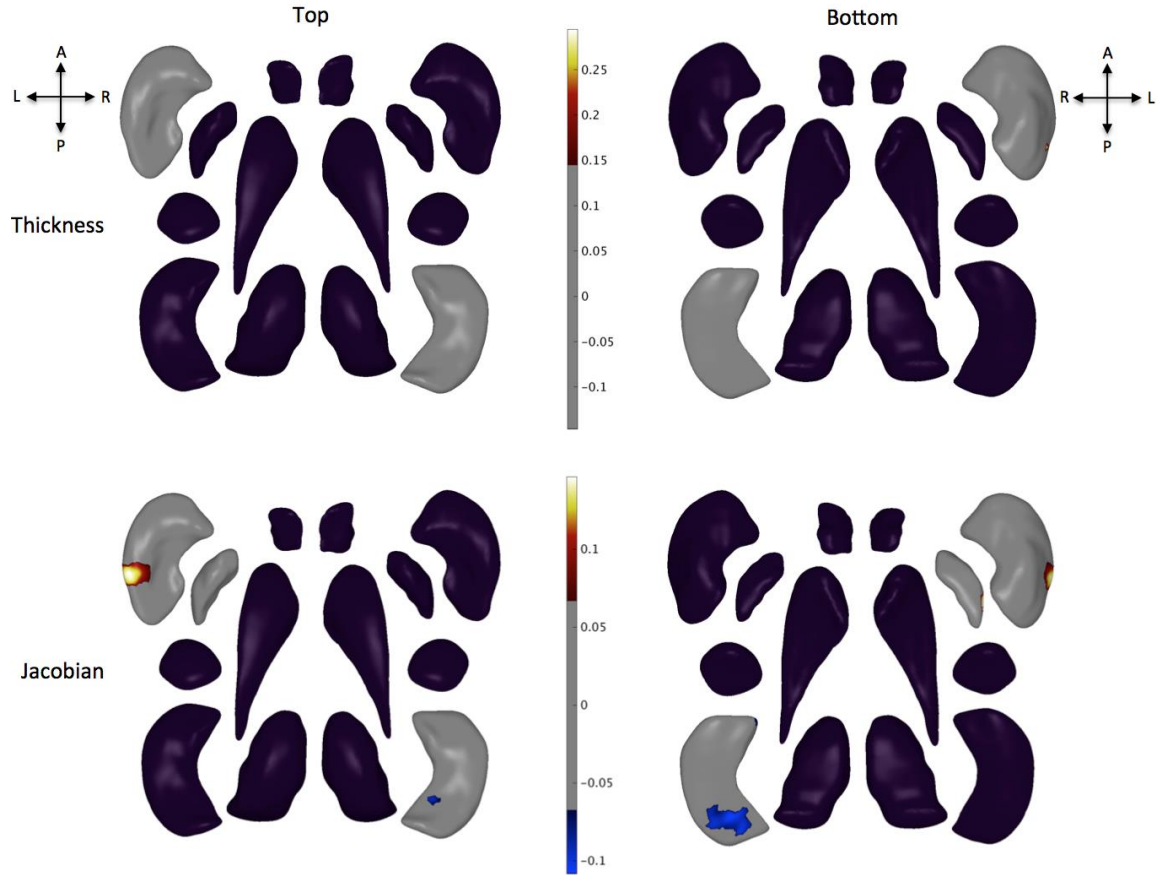


FIGURE S10. Correlogram plotting Spearman rank correlations between effects size estimates (Cohen’s d) across ENIGMA subcortical volume studies: ENIGMA 22q11DS vs. HC; 22q11DS+Psy vs. 22q11DS-Psy; ENIGMA schizophrenia (SCZ) vs. HC; ENIGMA major depressive disorder (MDD) vs. HC; ENIGMA obsessive compulsive disorder (OCD) vs. HC; ENIGMA bipolar disorder (BD) vs. HC; ENIGMA autism spectrum disorder (ASD) vs. HC; ENIGMA attention deficit hyperactivity disorder (ADHD) vs. HC. Correlation coefficients are provided for tests significant at $P < 0.01$ with X’s indicating non-significant tests. Correlograms were created using R’s “corrplot” library.

