

Figure S1: Analytic methods

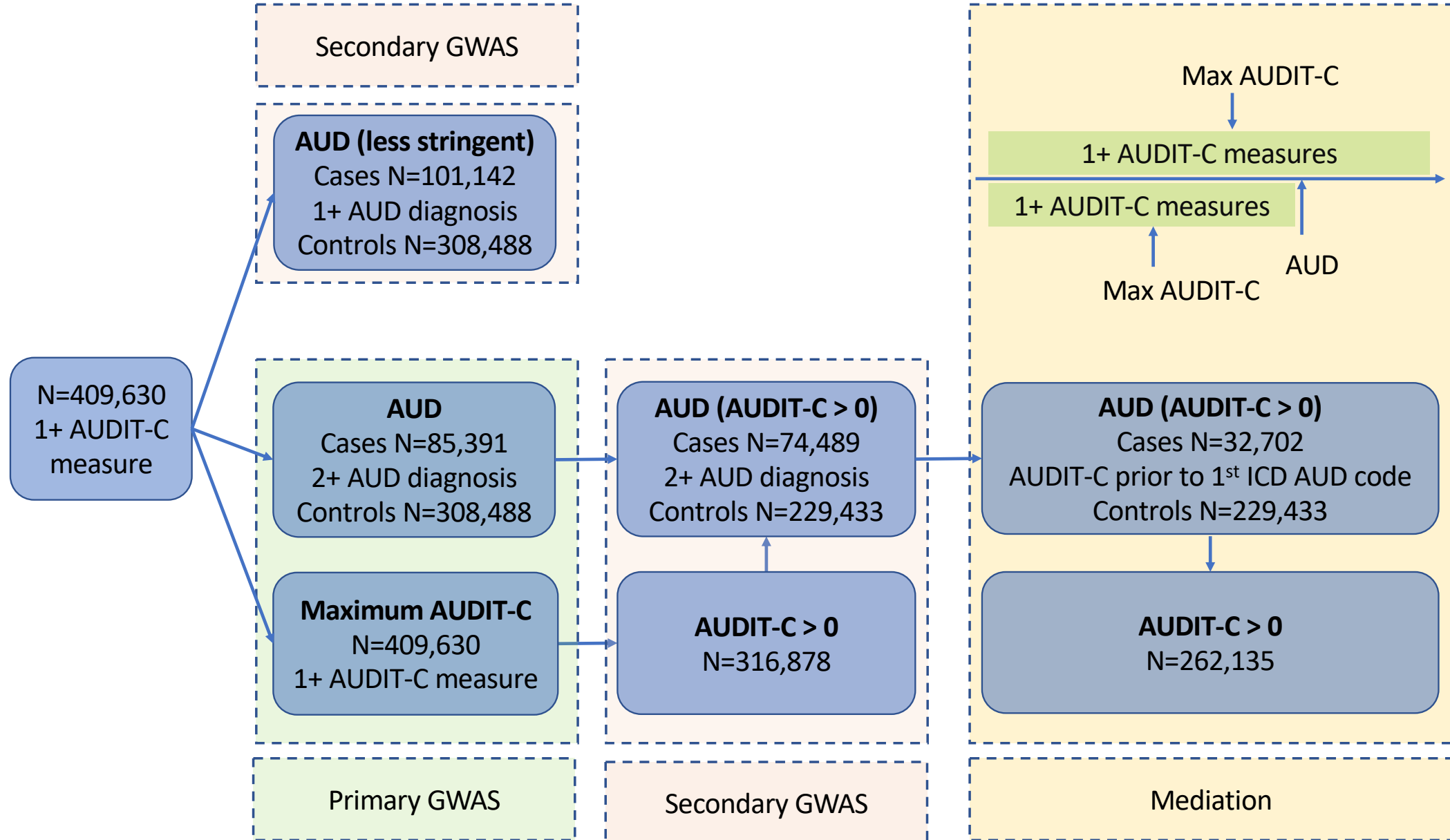


Figure S2: AUDIT-C scores

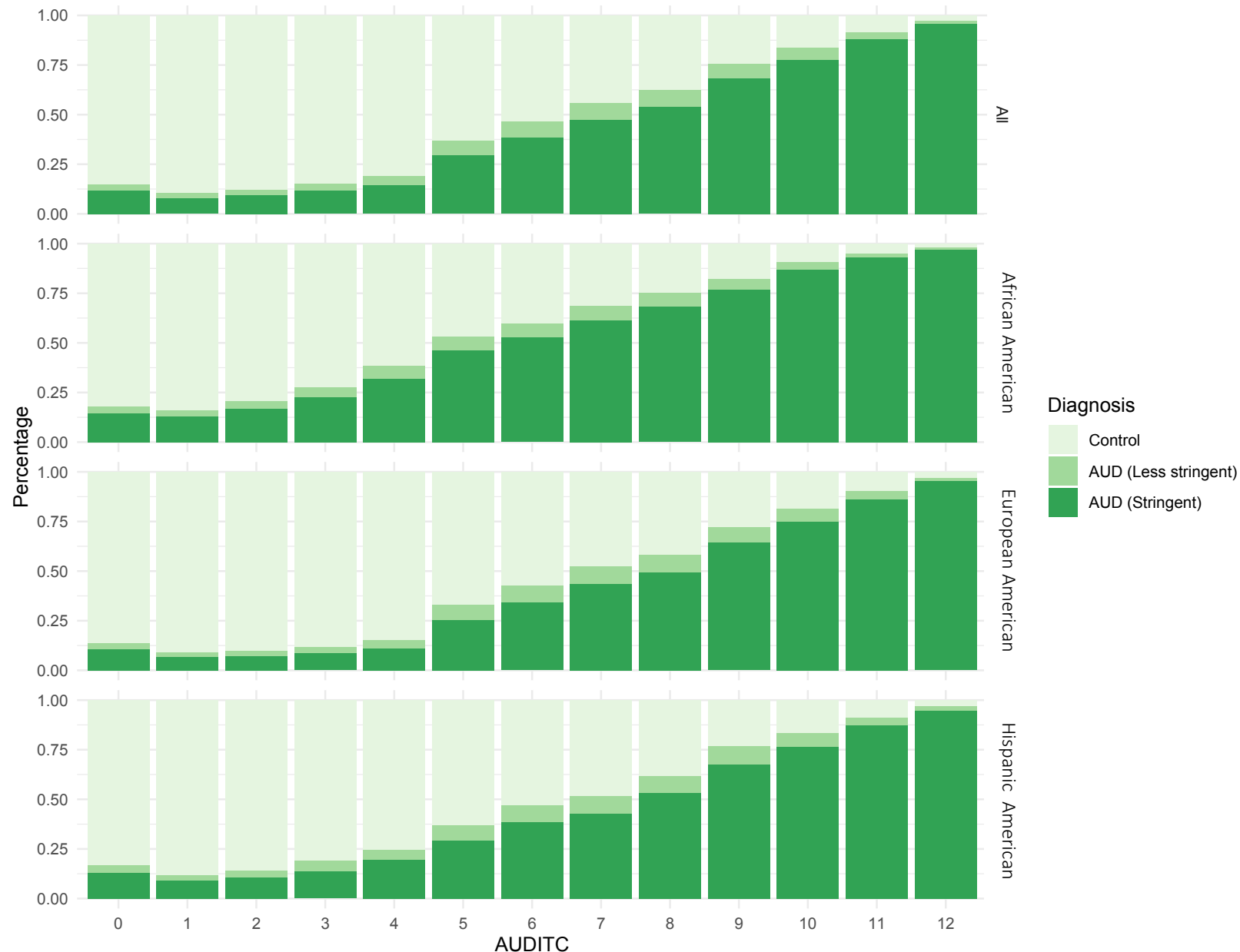


Figure S3: Summary of GWAS results

Numbers in circles at top represent number of GWS loci overlapping between GWAS

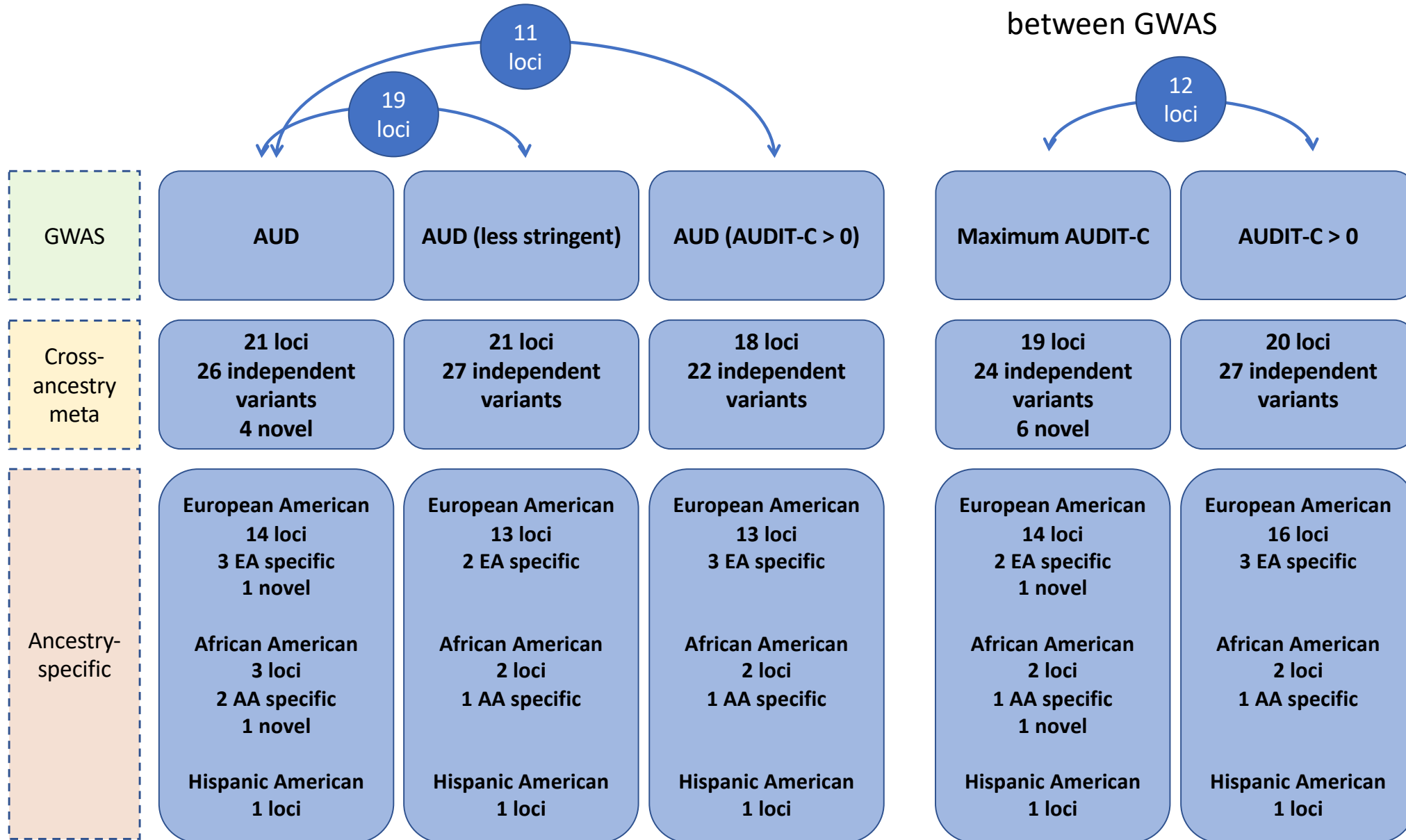
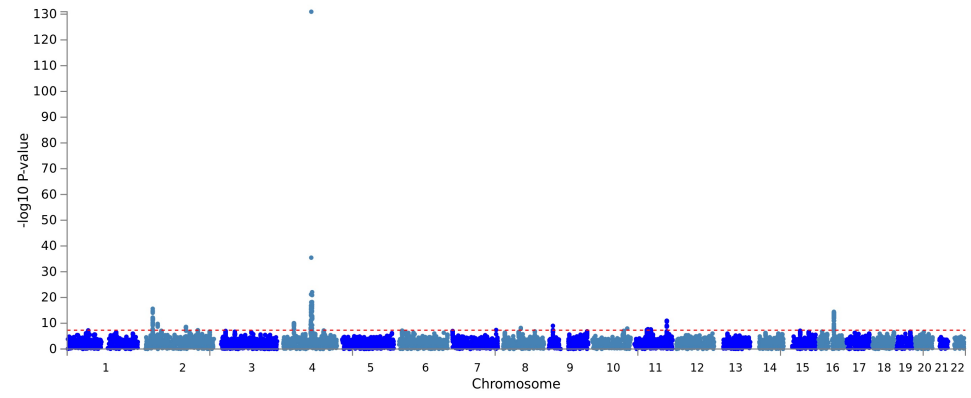
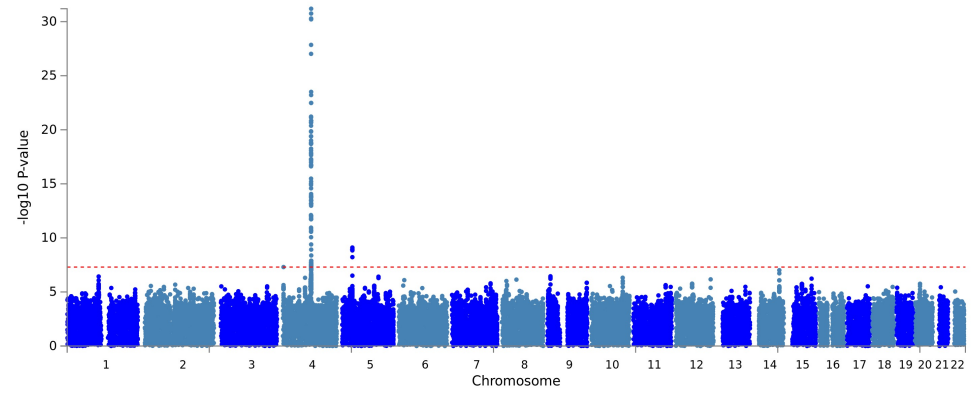


Figure S4: Manhattan plots for AUD by ancestry

European American



African American



Hispanic American

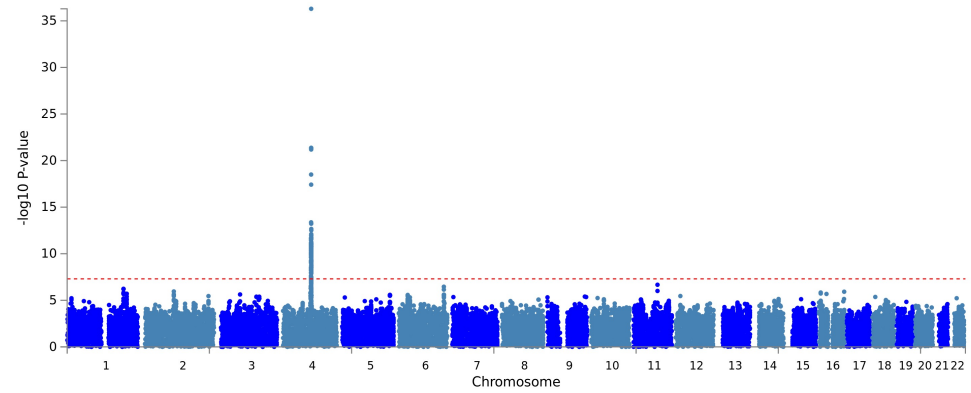


Figure S5: Locus zoom plots for ancestry-specific variants associated with AUD in European Americans

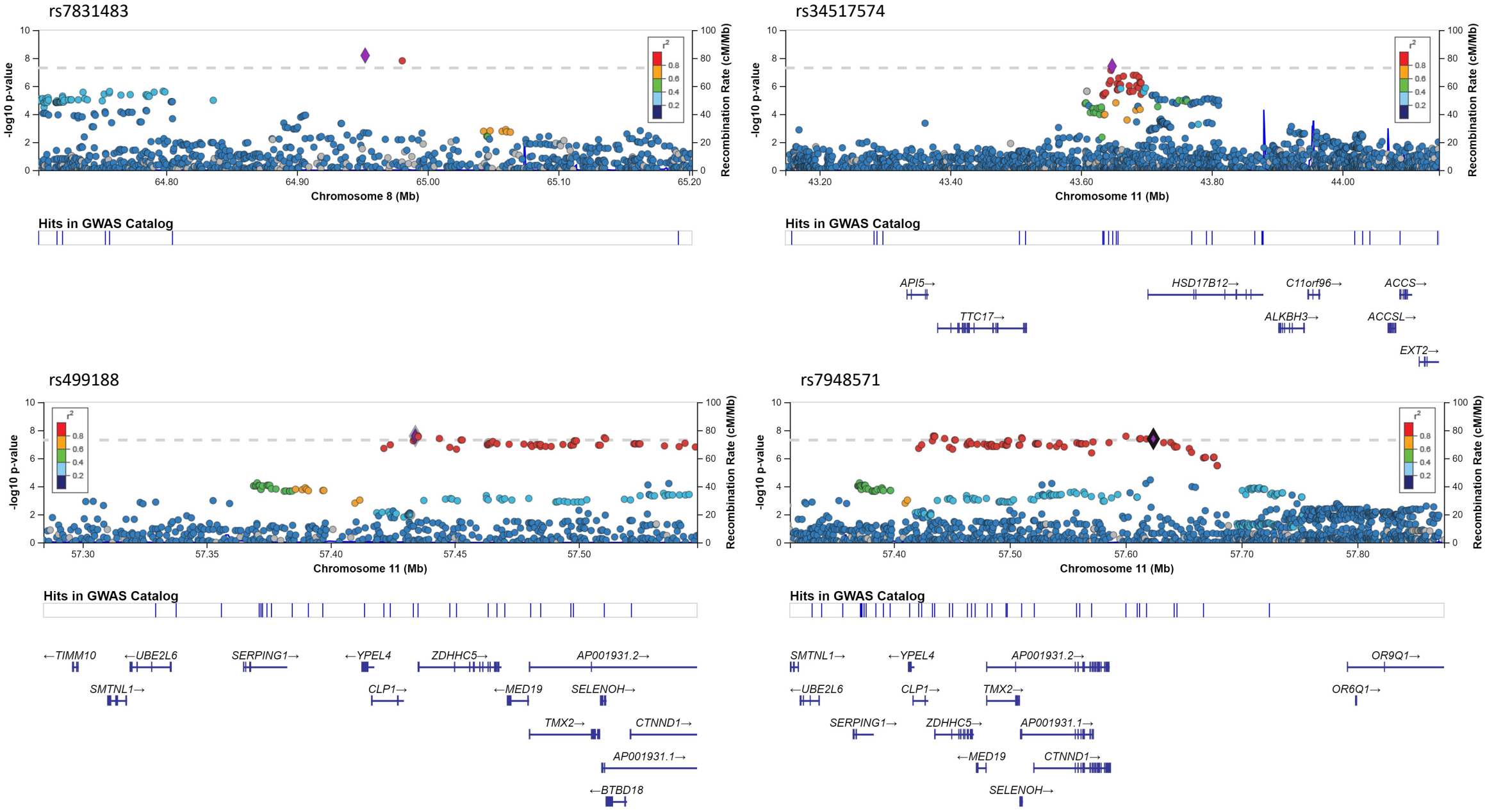


Figure S6: Locus zoom plots for ancestry-specific variants associated with AUD in African Americans

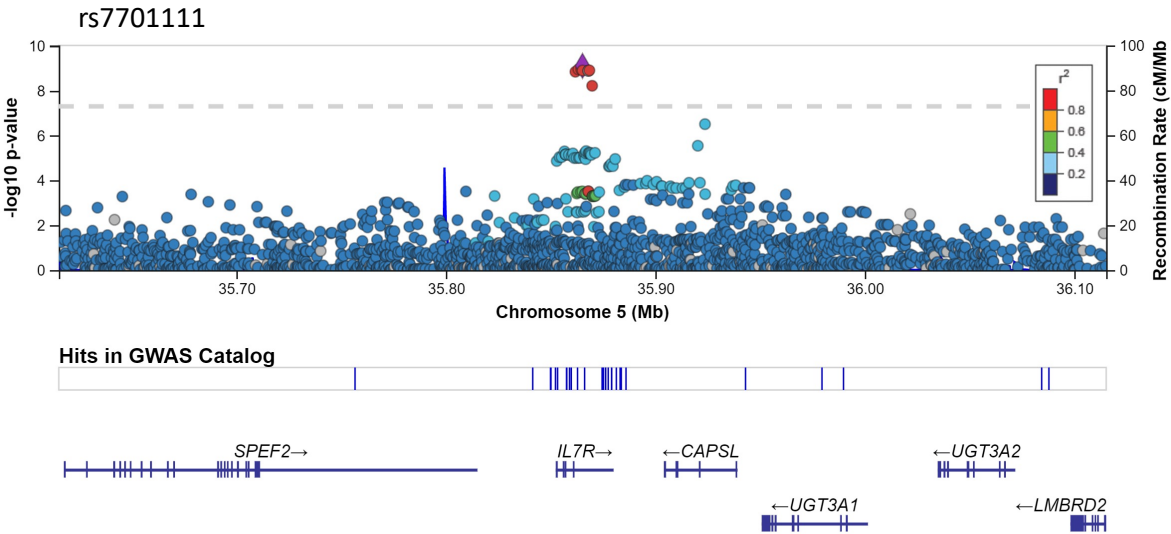
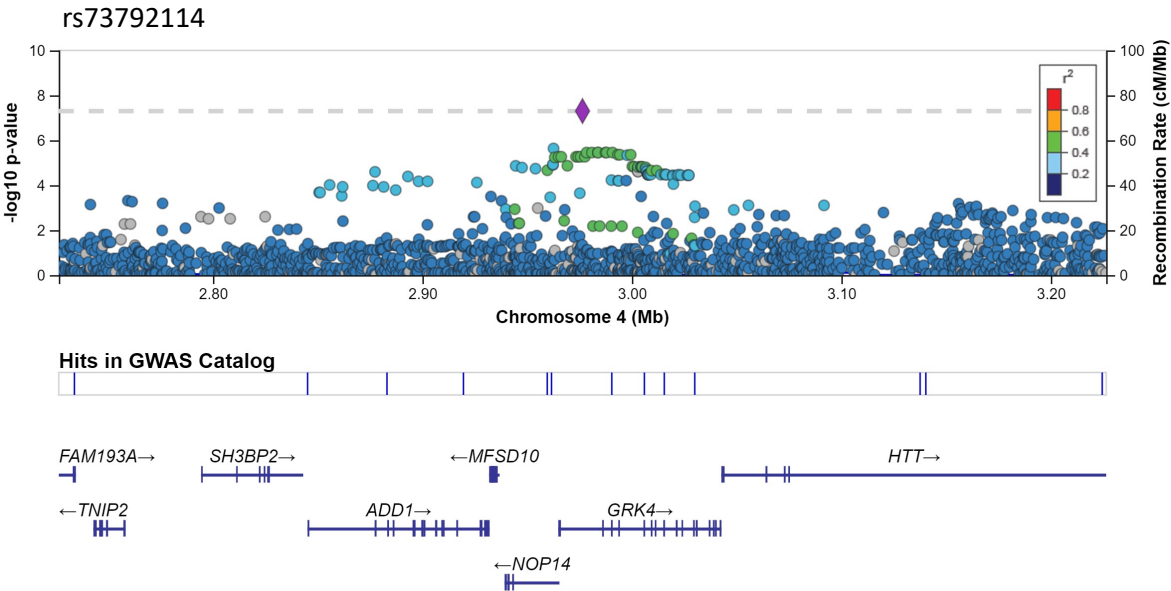


Figure S7: Manhattan plots for AUDIT-C by ancestry

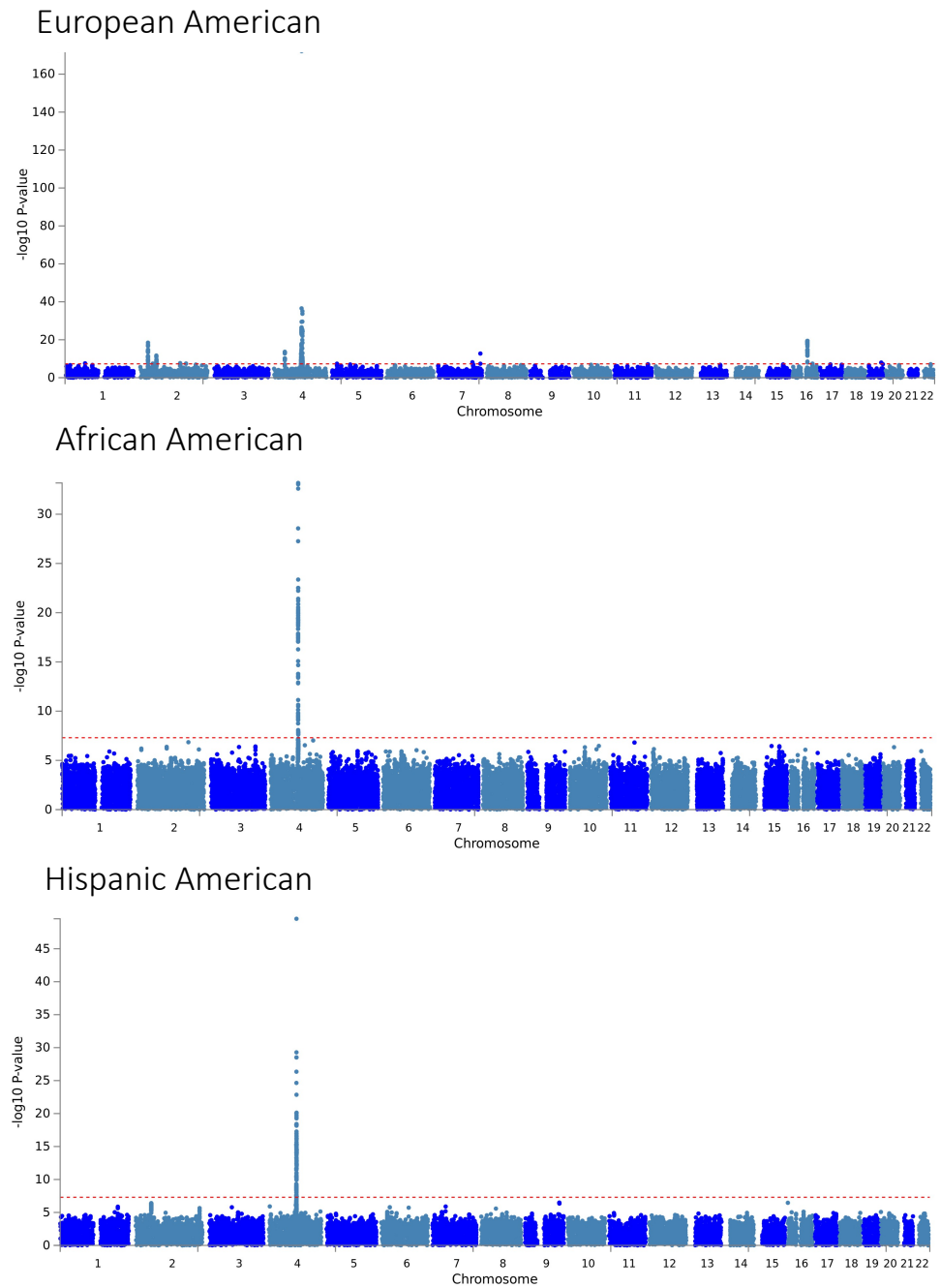


Figure S8: Locus zoom plots for ancestry-specific variants associated with AUDIT-C in European Americans

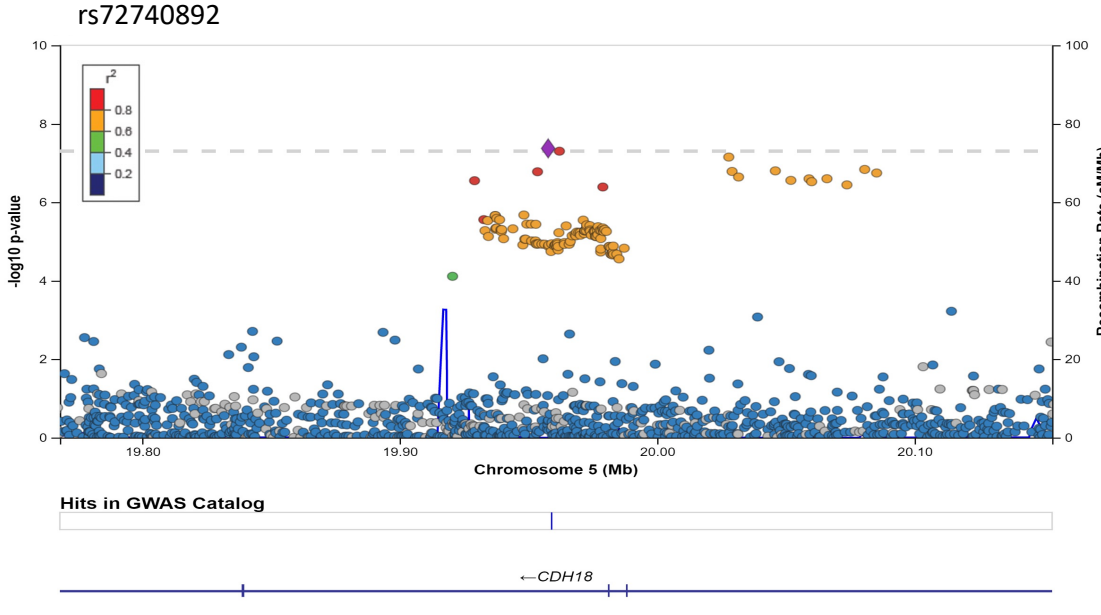
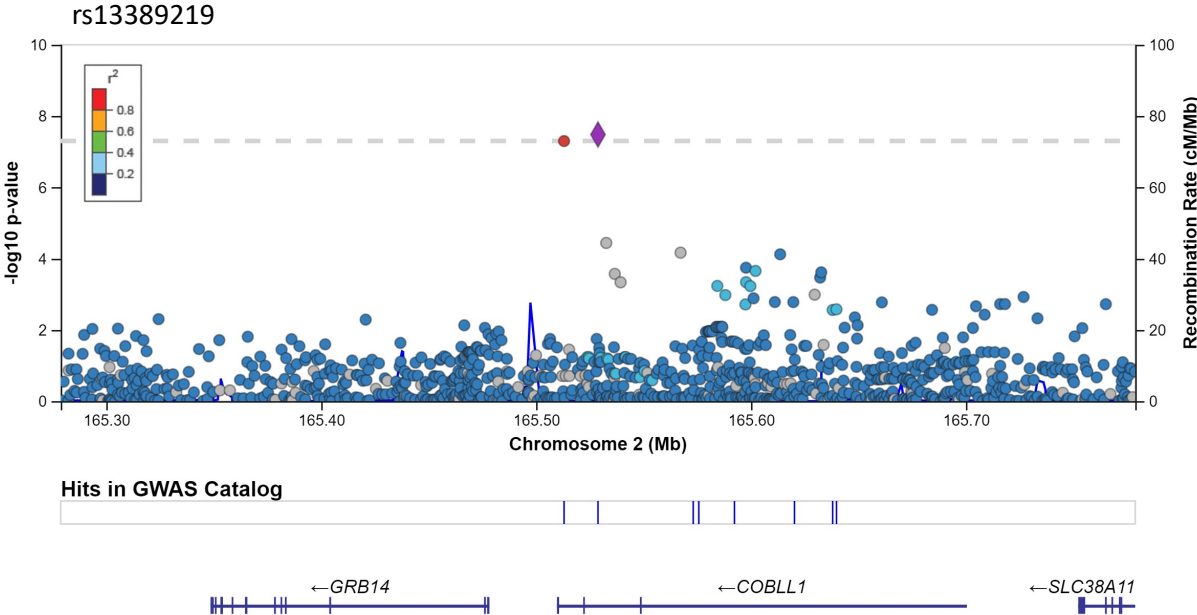


Figure S9: Locus zoom plots for ancestry-specific variants associated with AUDIT-C in African Americans

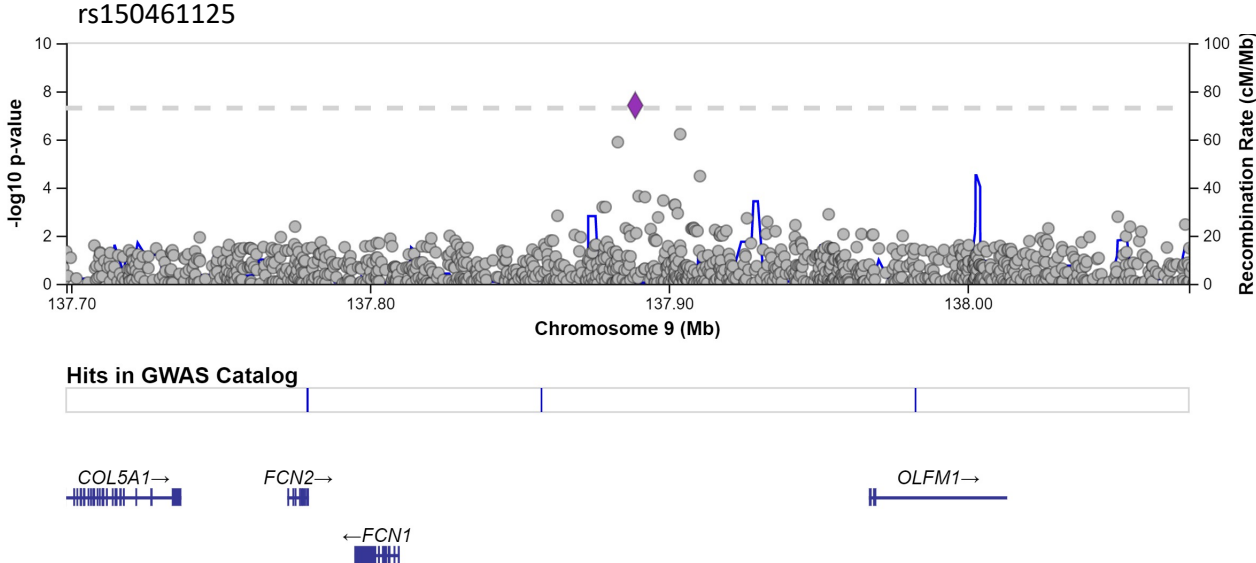


Figure S10: Manhattan plot for AUD (Less Stringent)

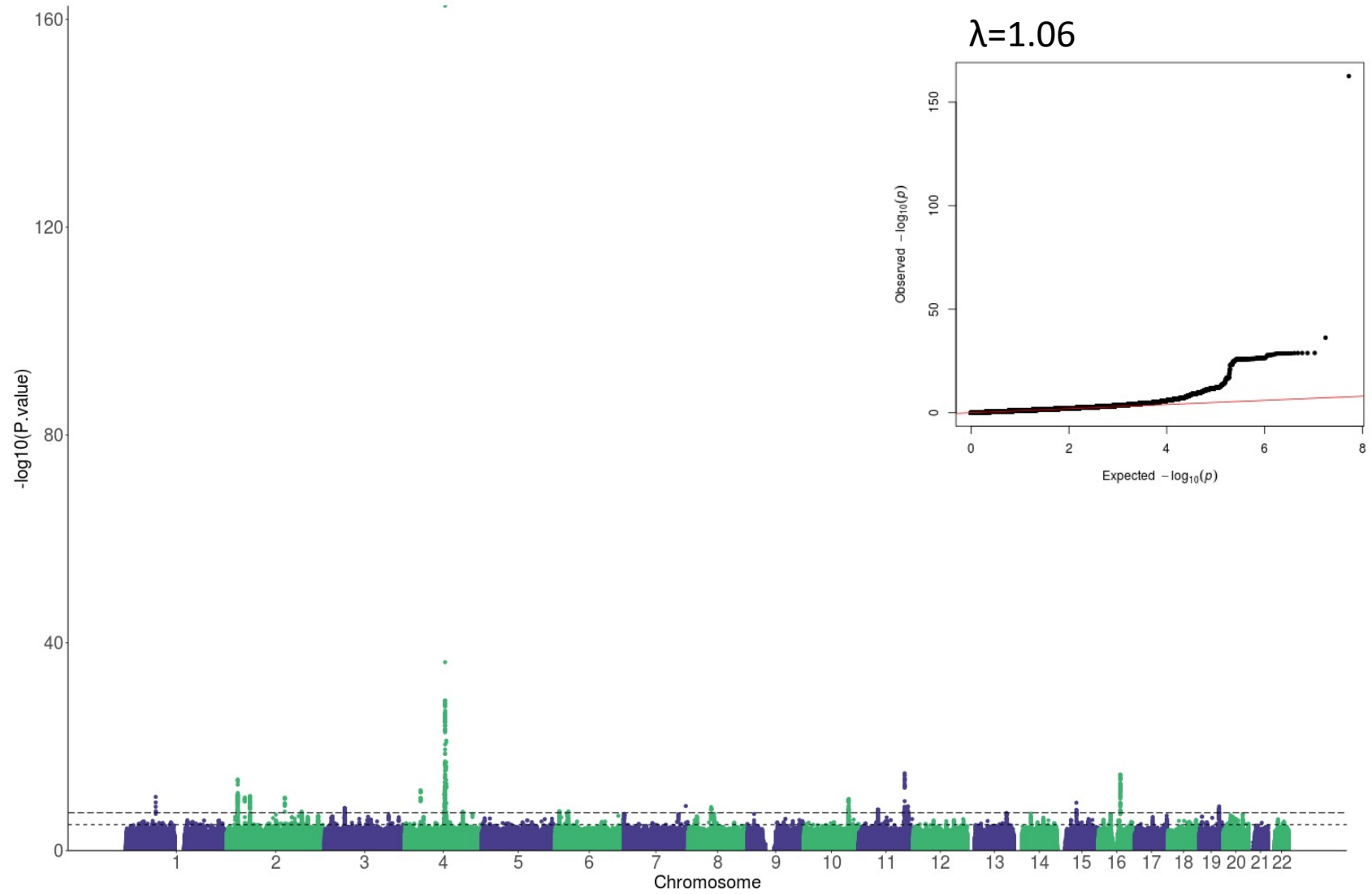


Figure S11: Manhattan plot for AUD (Stringent, AUDIT-C>0)

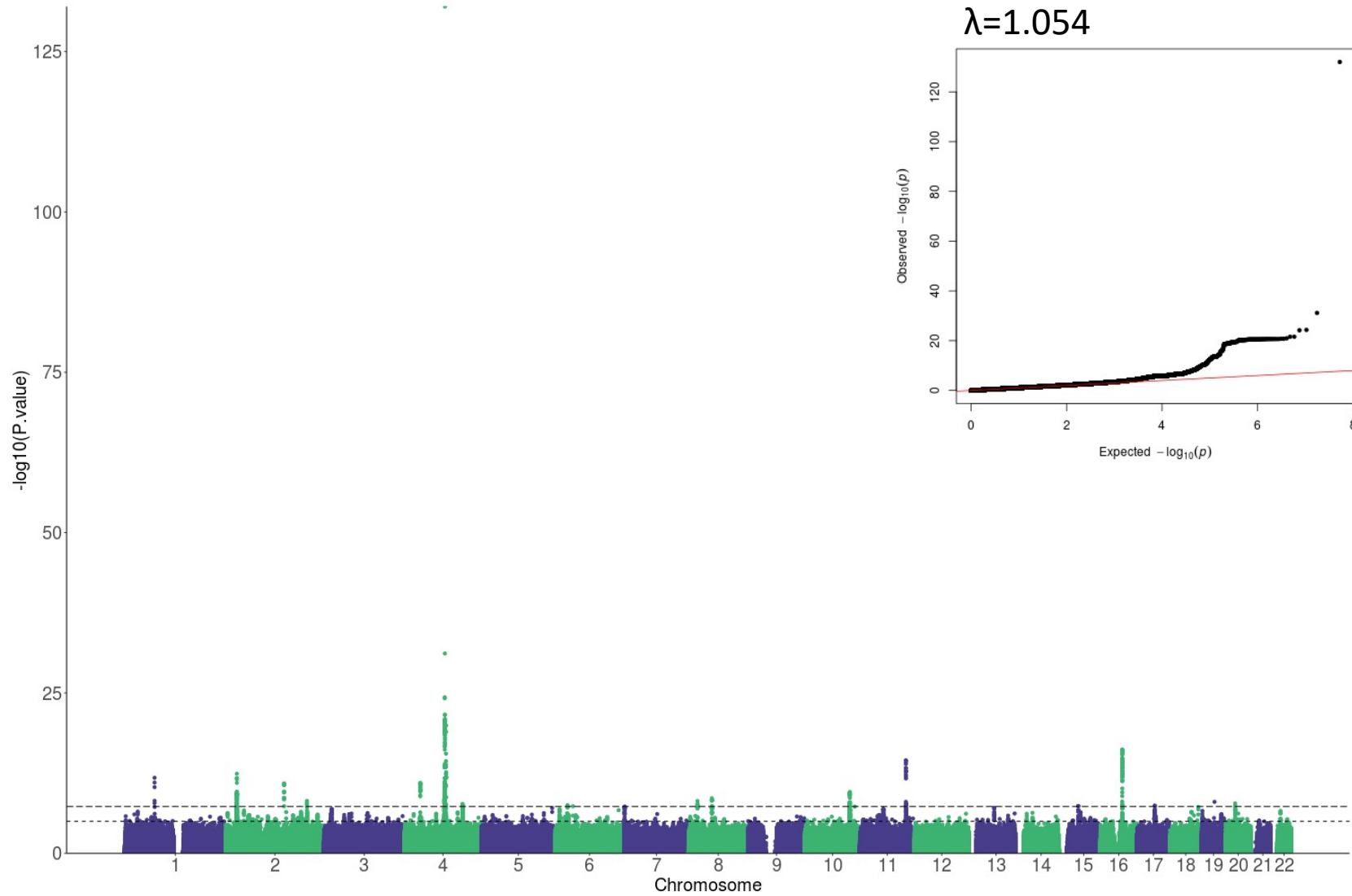


Figure S12: Manhattan plot for AUDIT-C>0

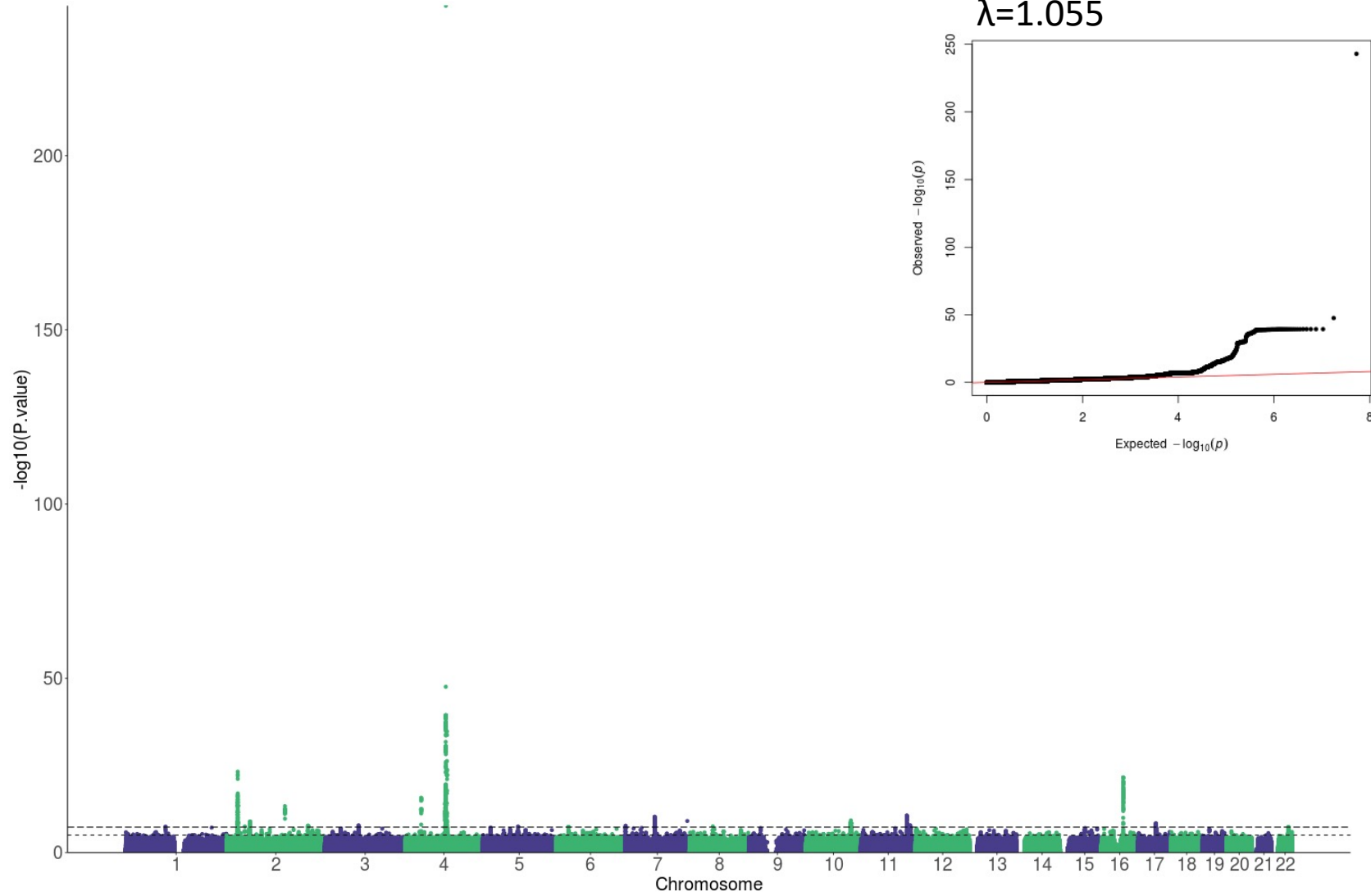


Figure S13: Gene-based association analyses for AUD

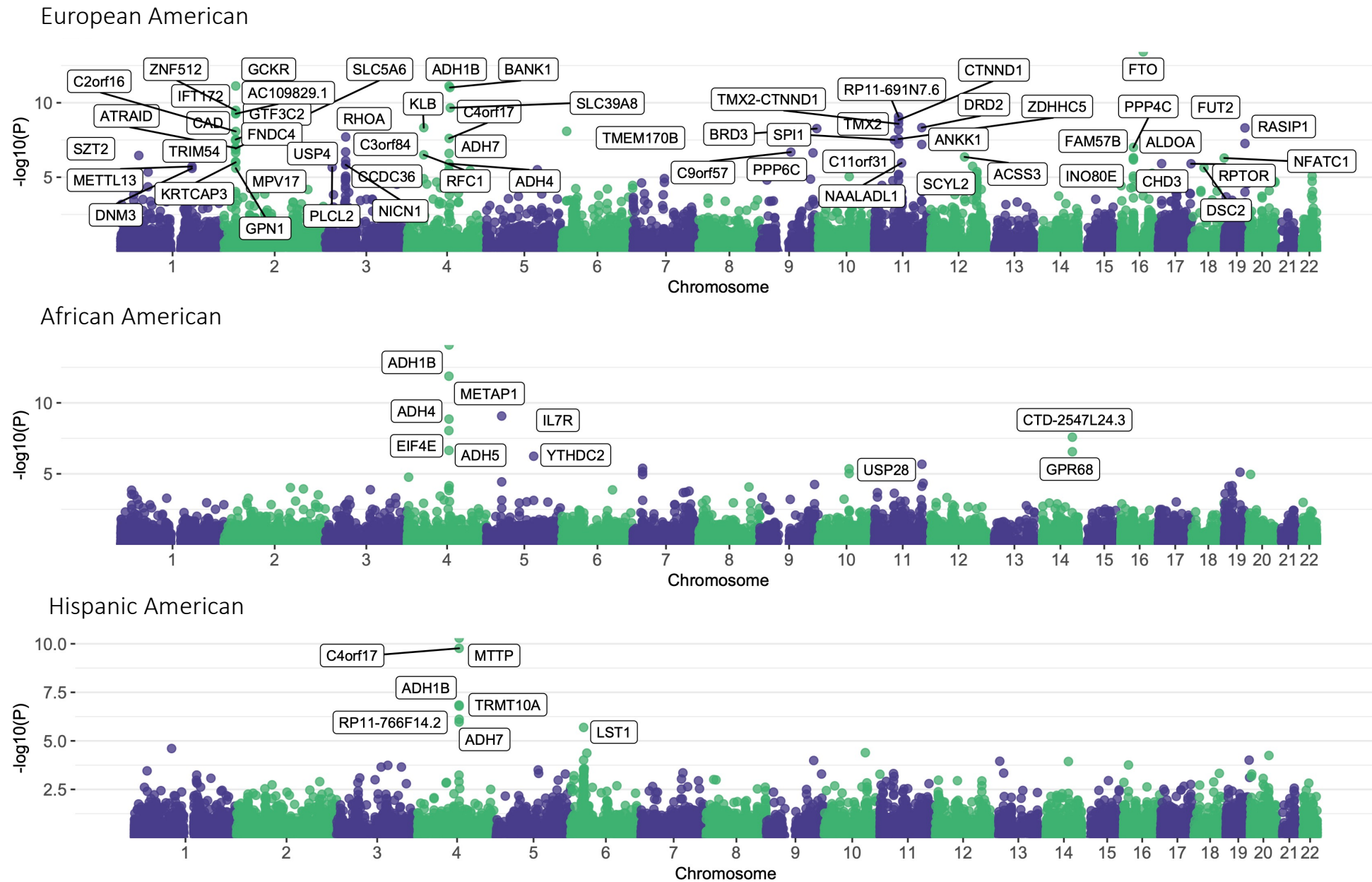


Figure S14: Gene-based association analyses for AUDIT-C

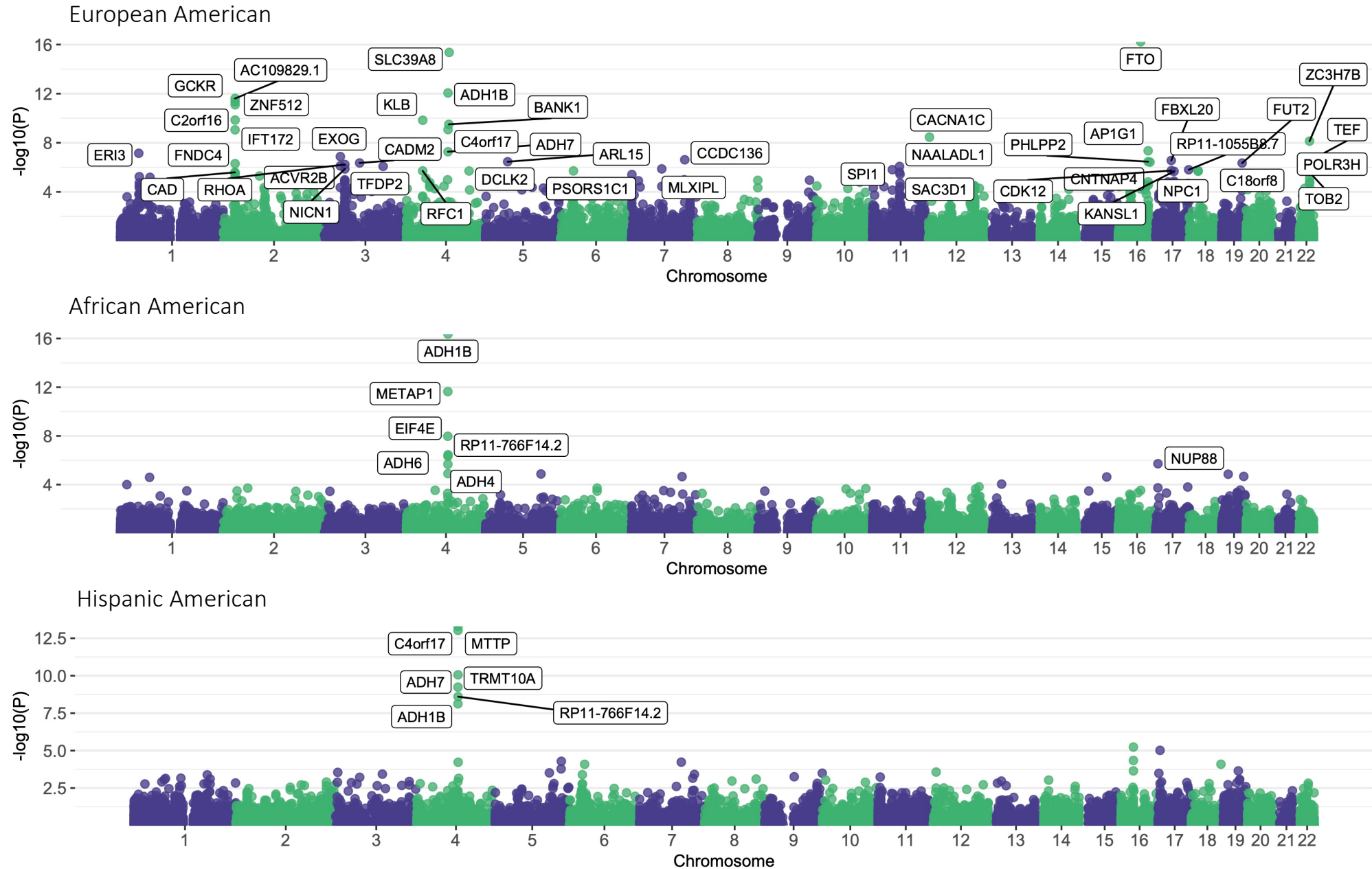
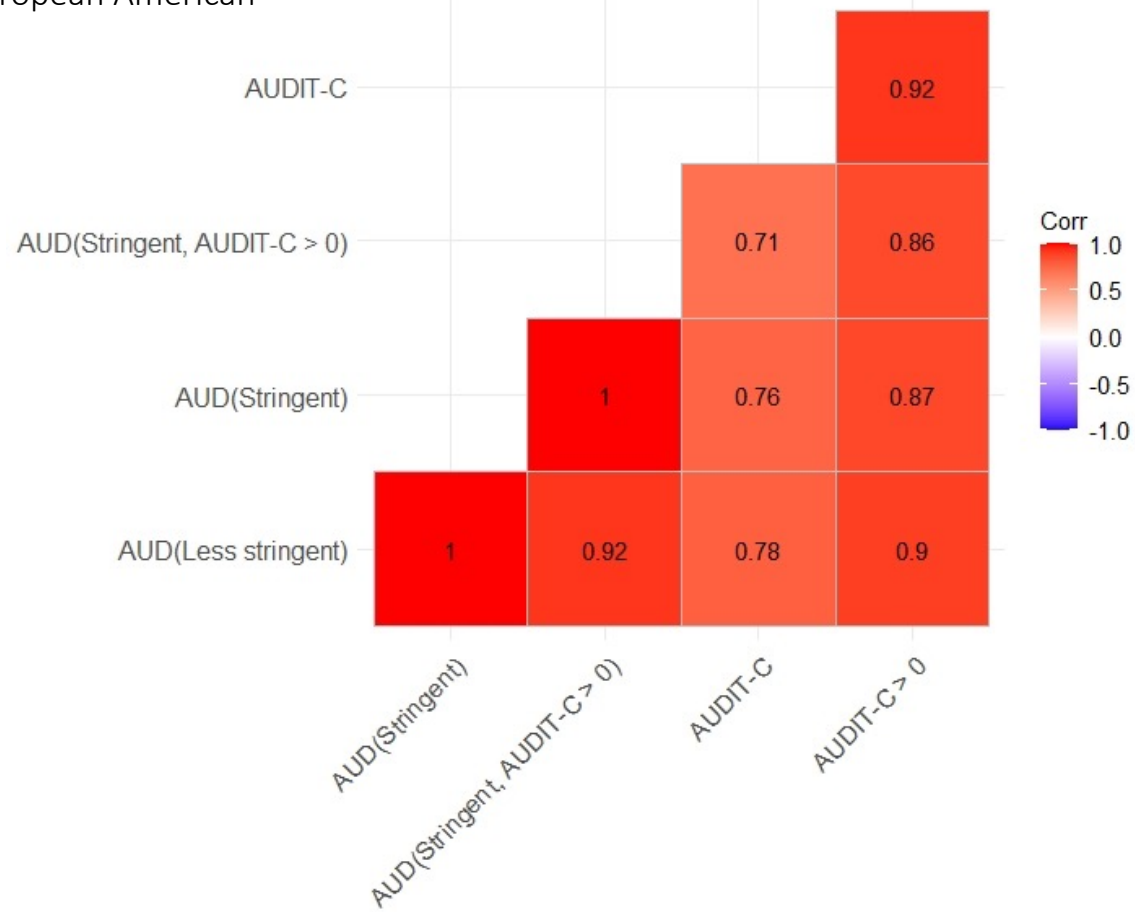


Figure S15: Genetic correlation between phenotypes

European American



African American

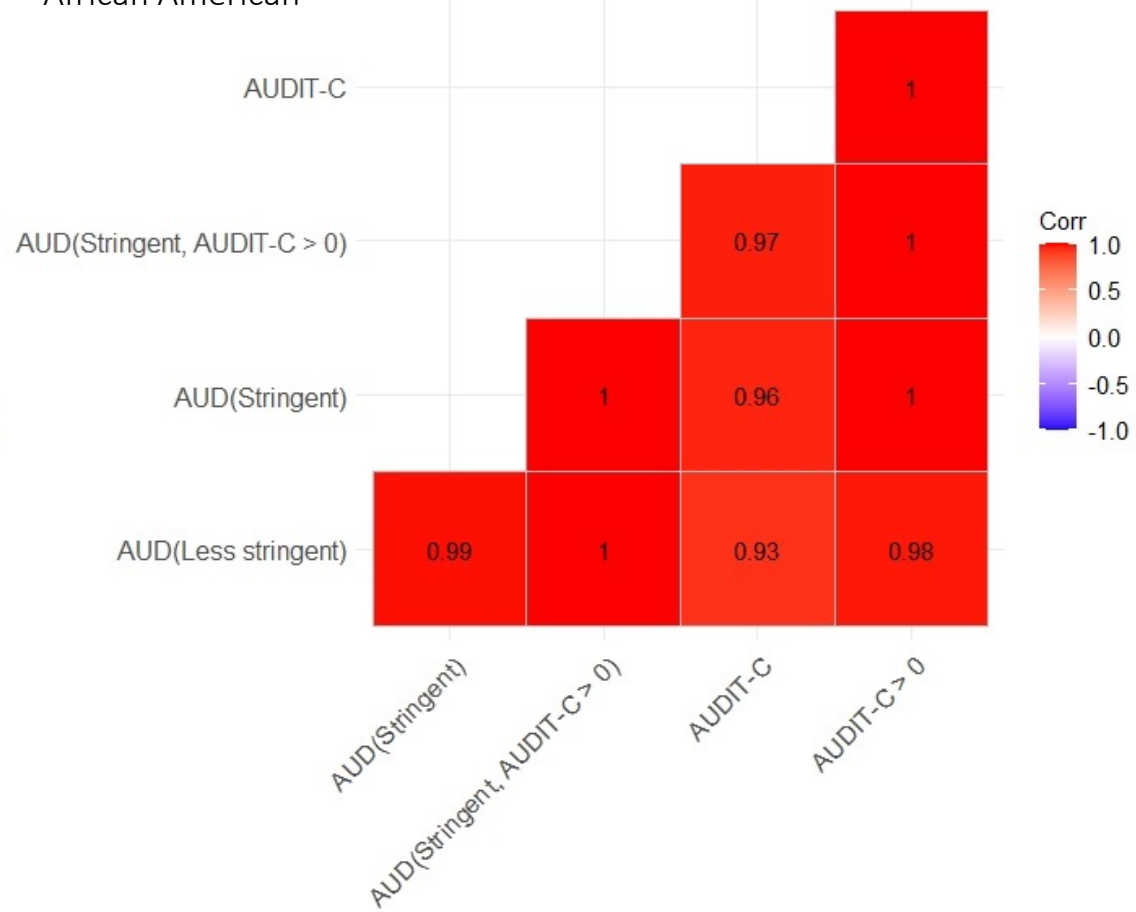
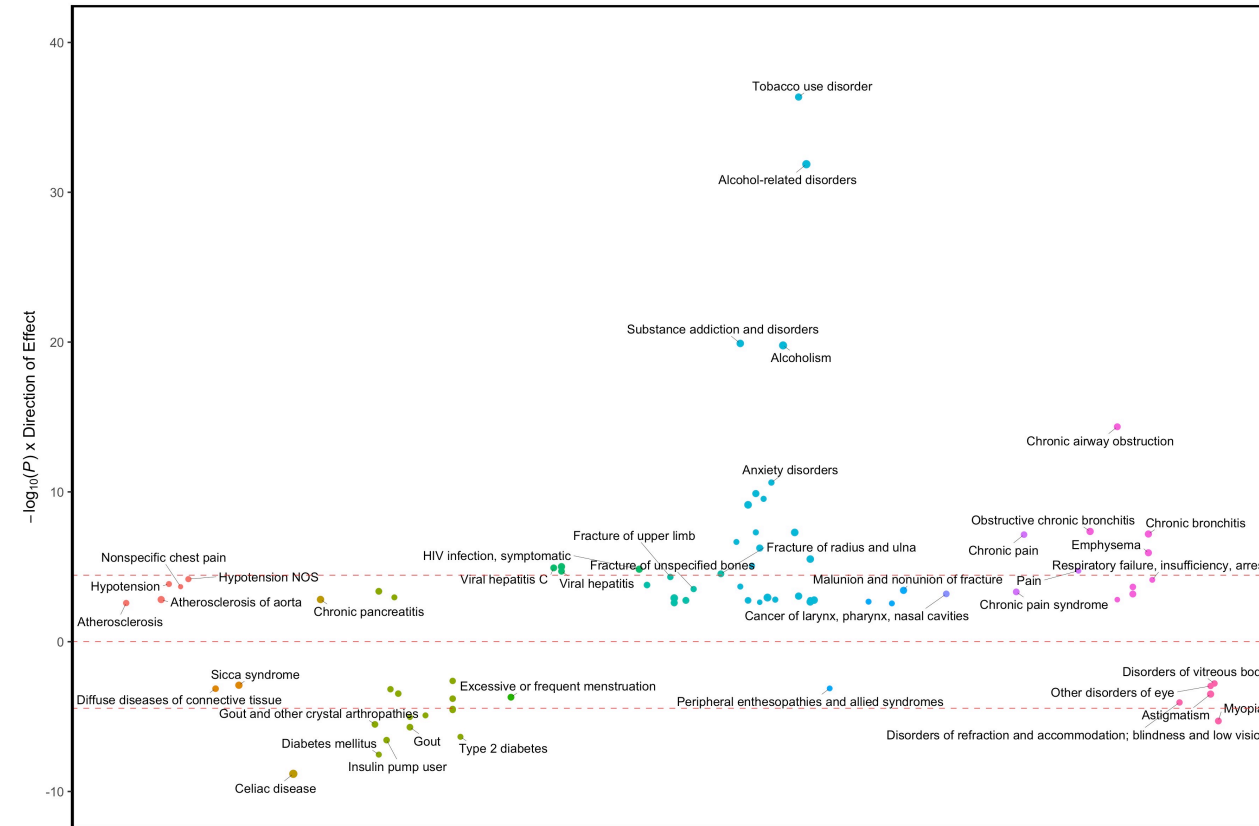


Figure S16: PheWAS in European ancestry individuals in BioVU

AUD PRS



AUDIT-C PRS

