

**SUPPLEMENTARY TABLE S1. Demographics of the Samples<sup>a</sup>**

Characteristic	VR-INTERVENTION (N=7)		CONTROL (N=7)	
	Mean	SD	Mean	SD
Age	42.3	14.4	44.1	15.4
Years of education	14.7	1.8	15.9	2.5

<sup>a</sup> SD: standard deviation

**SUPPLEMENTARY TABLE S2. Characteristics of the Samples**

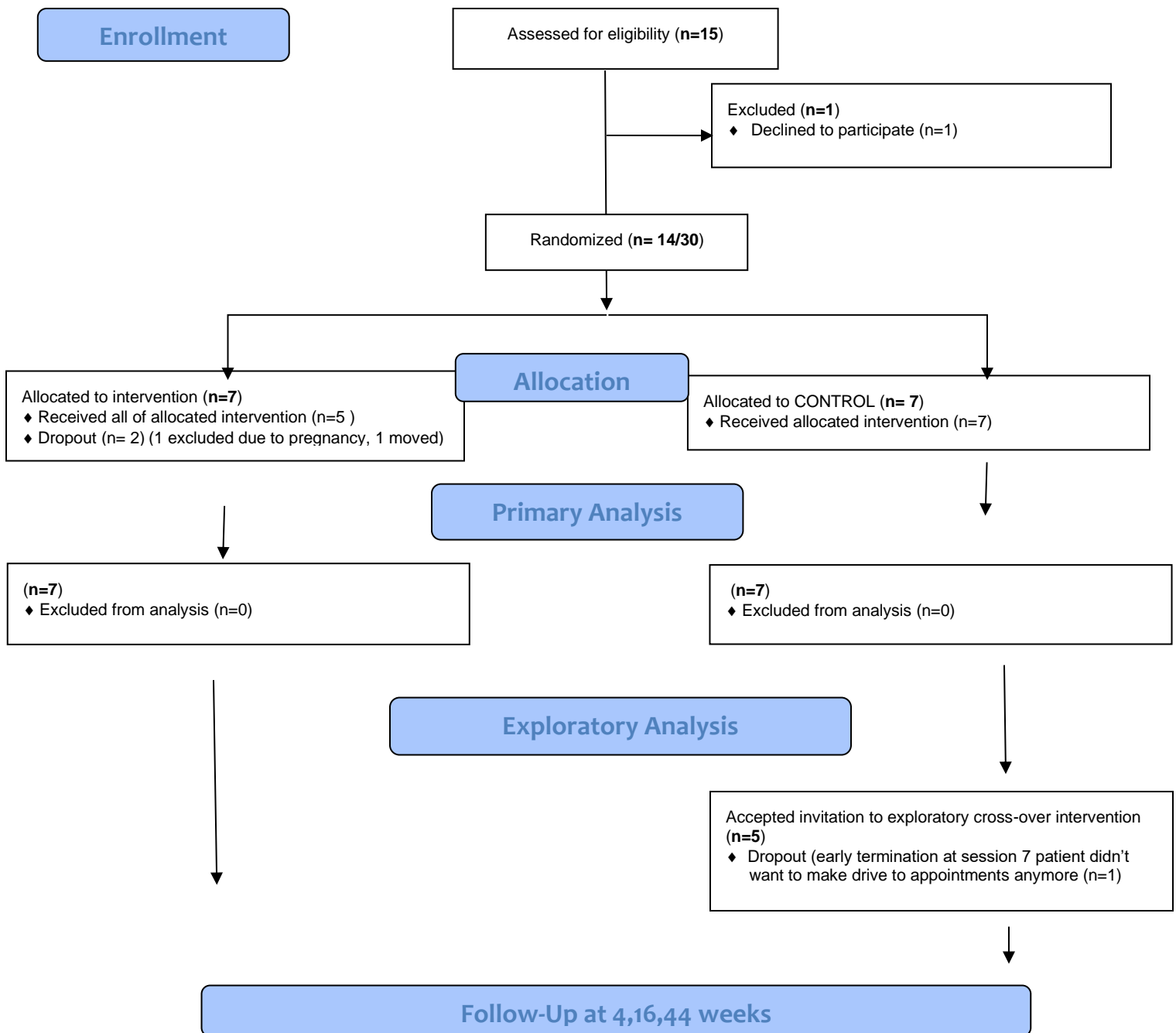
Characteristic	VR-INTERVENTION (N=7)	CONTROL (N=7)
	N	N
Female	6	4
Caucasian	6	6
<sup>a</sup> Episodic Symptoms	6	7
Receiving Disability	3	5
<sup>b</sup> Comorbidities present	3	4
<sup>c</sup> Identifiable Triggers	5	4

<sup>a</sup>Only a single subject had continuous symptoms that included gait difficulties. Two subjects in each group were classified as PNES. Only one subject had negative symptoms (weakness) in the active arm.

<sup>b</sup>Comorbid diagnoses included: Post-Traumatic Stress Disorder (N=4), Traumatic Brain Injury (N=1), Meneire's Disease (N=1), and Autism (N=1).

<sup>c</sup>Triggers included: Seeing someone fall, football stadiums, narrow hallways, band practice, crowds, African American culture, cars, military combat sounds, financial transactions

**Supplementary Figure S1.**  
**2019 PRELIMINARY CONSORT FLOW DIAGRAM**  
**(target N=30)**



Supplementary Figure S2. Mean Symptom Frequency per week

