

## Florida Counties, by Area

Area	Counties
1	Escambia; Okaloosa; Santa Rosa; Walton
2	Bay; Calhoun; Franklin; Gadsden; Gulf; Holmes; Jackson; Jefferson; Leon; Liberty; Madison; Taylor; Wakulla; Washington
3	Alachua; Bradford; Citrus; Columbia; Dixie; Gilchrist; Hamilton; Hernando; Lafayette; Lake; Levy; Marion; Putnam; Sumter; Suwannee; Union
4	Baker; Clay; Duval; Flagler; Nassau; St Johns; Volusia
5	Pasco; Pinellas
6	Hardee; Highlands; Hillsborough; Manatee; Polk
7	Brevard; Orange; Osceola; Seminole
8	Charlotte; Collier; Desoto; Glades; Hendry; Lee; Sarasota
9	Indian River; Martin; Okeechobee; Palm Beach; St Lucie
10	Broward
11	Dade; Monroe

## Cohort Building Flowchart

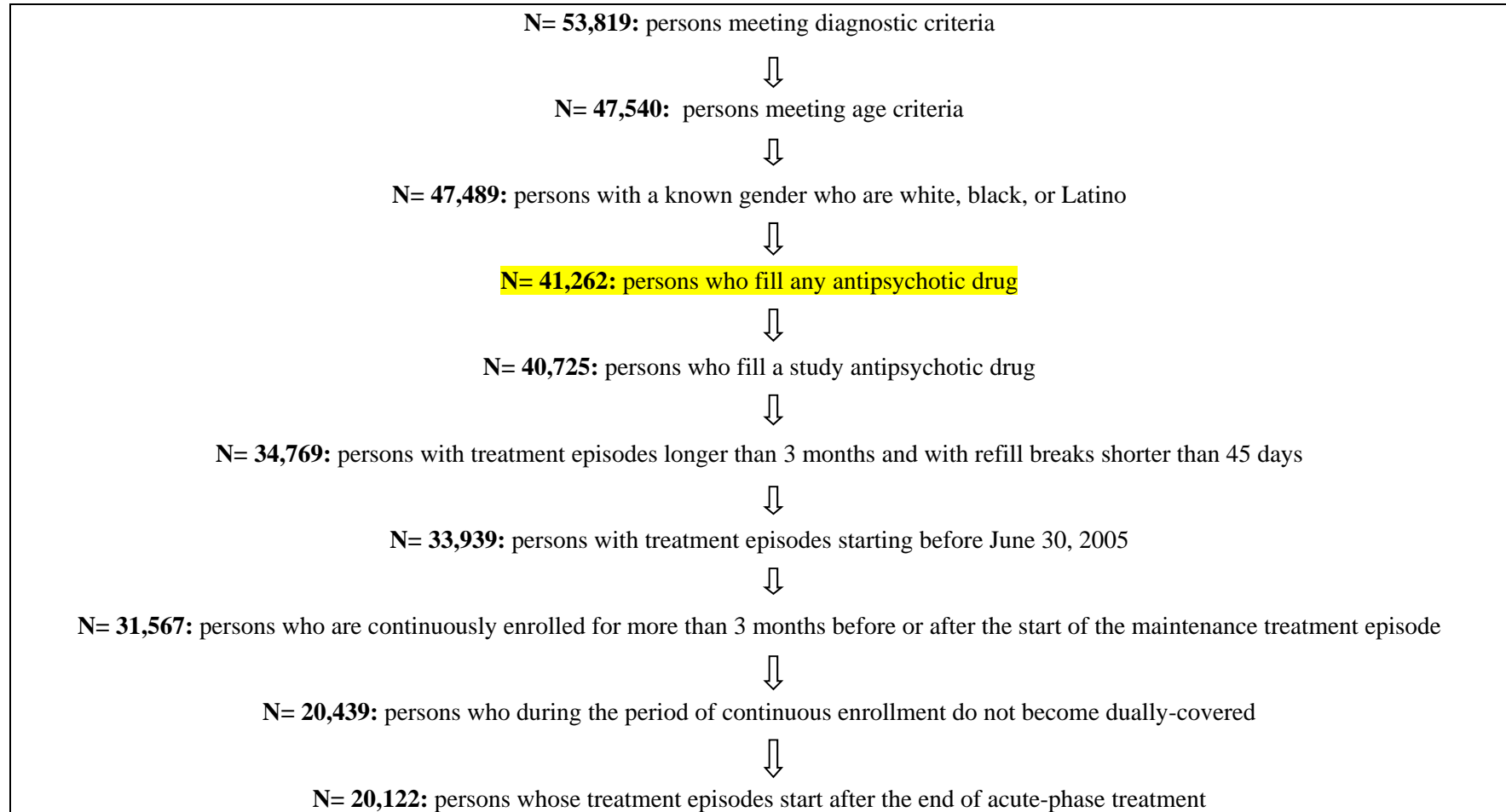


Figure 1. Survival Curve for Risk of Discontinuation, by Antipsychotic Drug Treatment and Race-Ethnicity

### Clozapine versus Other Antipsychotics (n = 749 matched sets)

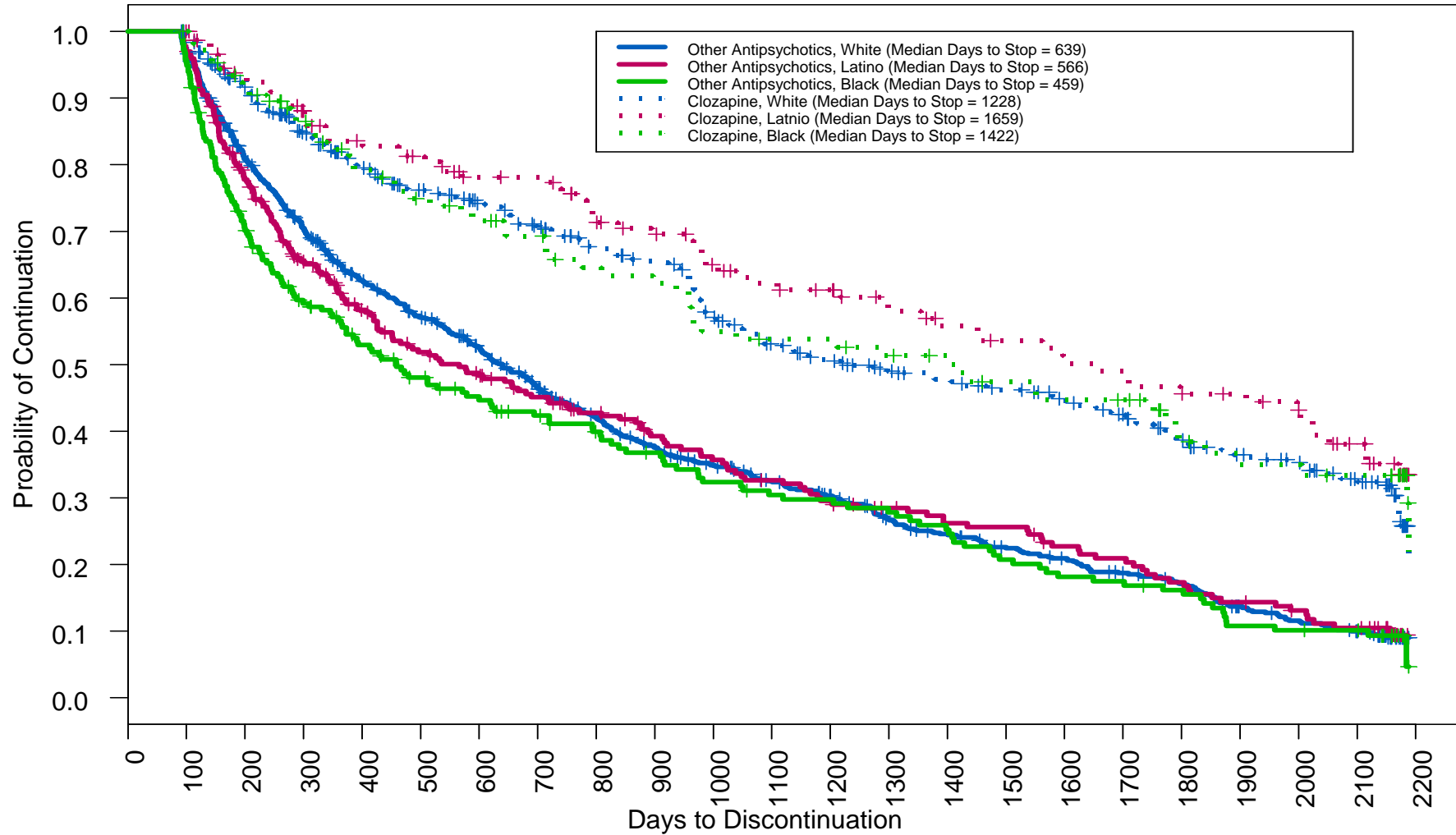


Figure 2. Survival Curve for Secondary Outcome (Risk of Discontinuation or Hospitalization), by Antipsychotic Drug Treatment and Race-Ethnicity

### Clozapine versus Other Antipsychotics (n = 749 matched sets)

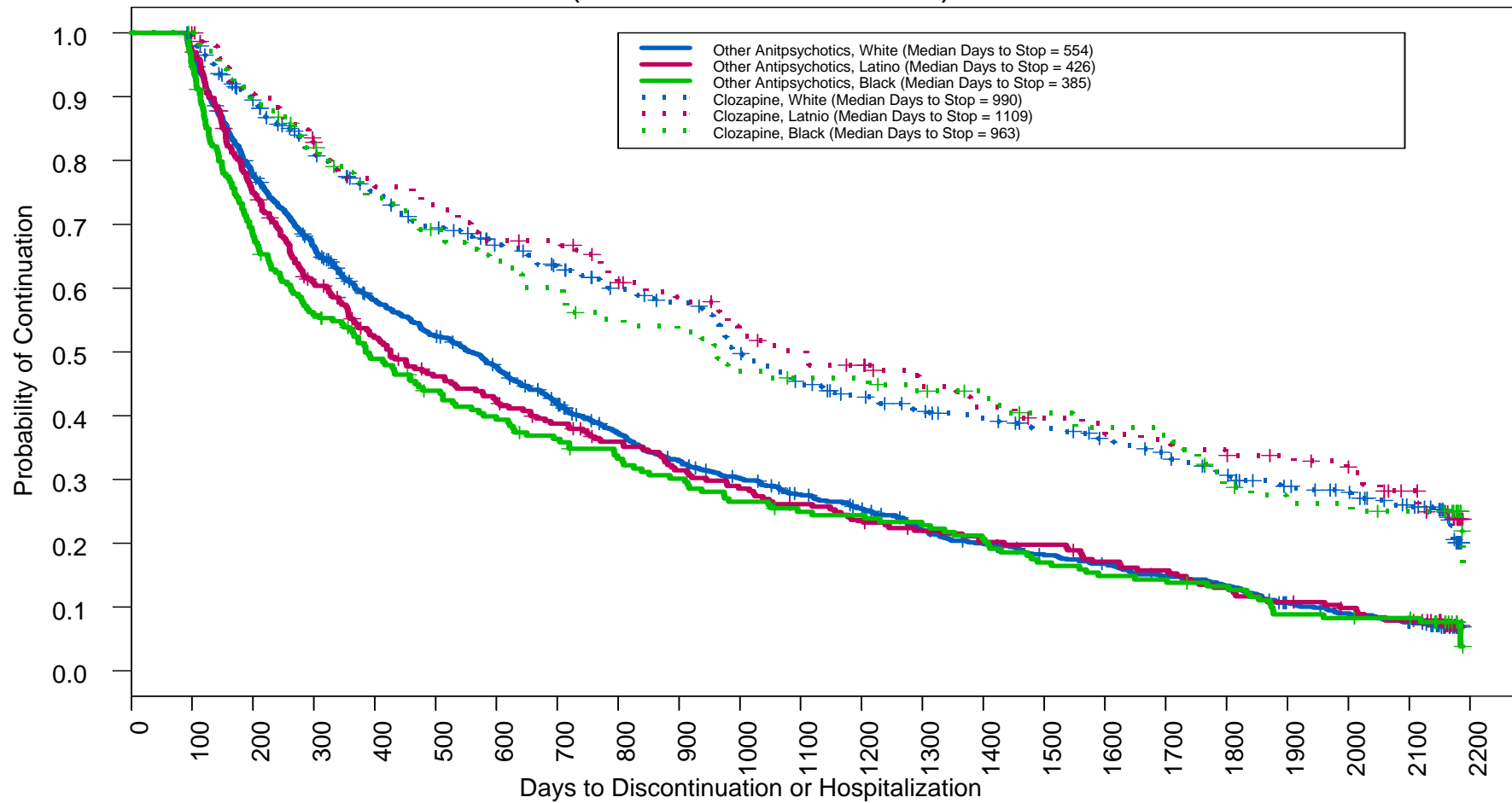


Figure 3. Survival Curve for Analyses Comparing Clozapine to Other Atypicals: Primary Outcome (Risk of Discontinuation), by Antipsychotic Drug Treatment and Race-Ethnicity

### Clozapine versus Other Atypical Antipsychotics (n = 749 matched sets)

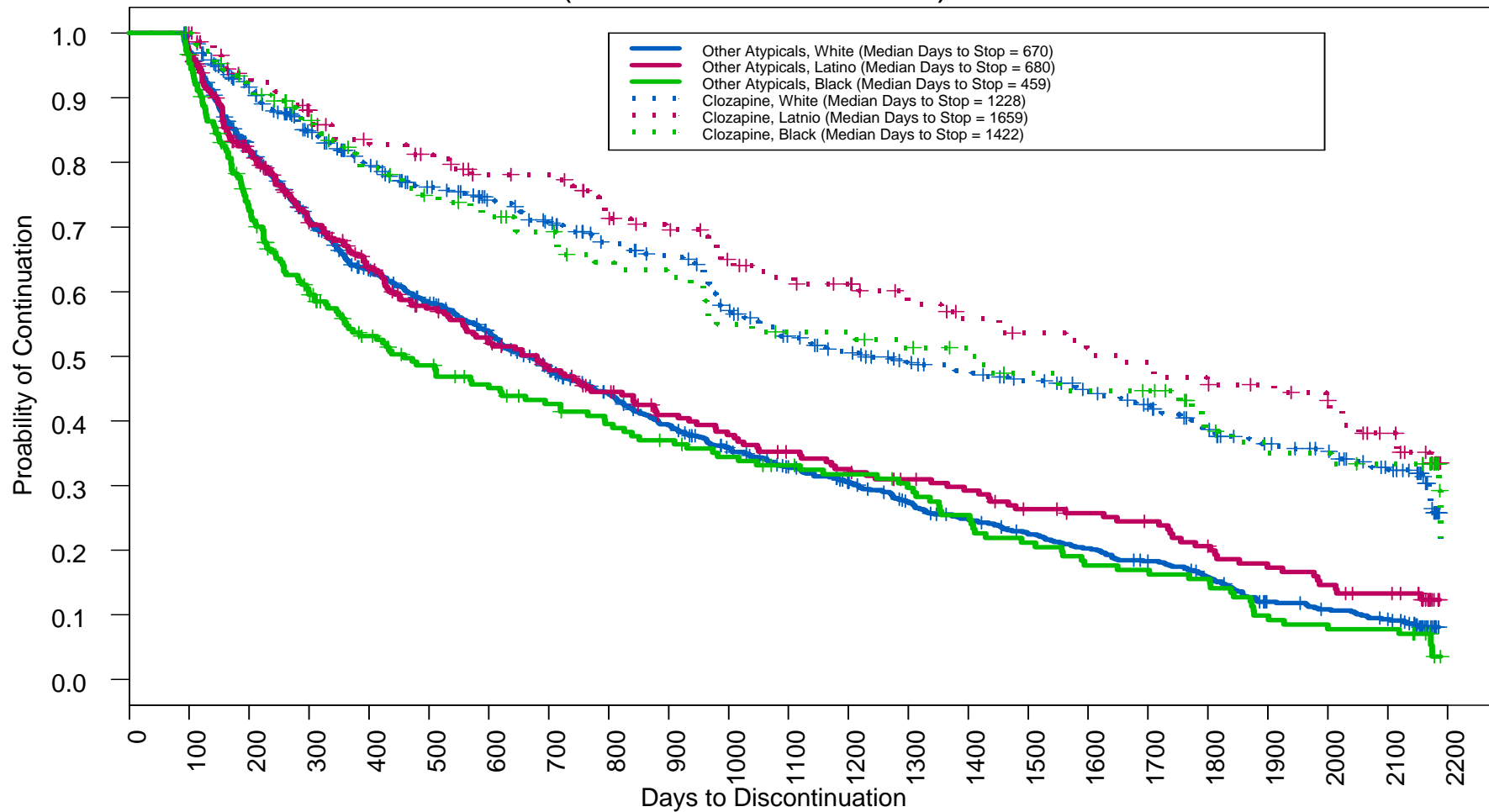


Figure 4. Survival Curve for Analyses Comparing Clozapine to Other Atypicals: Primary Outcome (Risk of Discontinuation or Hospitalization), by Antipsychotic Drug Treatment and Race-Ethnicity

### Clozapine versus Other Atypicals Antipsychotics (n = 749 matched sets)

