

Supplementary Material

Table 1
Socio-demographic characteristics for inpatients and outpatients.

	Inpatients (n = 157)	Outpatients (n = 102)	Statistic (df)	p-value*
Gender, N (%)				
Male	106 (67.5)	71 (69.6)	χ^2 (1) = .13	.72
Female	51 (32.5)	31 (30.4)		
Living Circumstances, N (%)				
Alone	21 (16.2)	15 (16.1)	χ^2 (3) = 6.60	.086
Partner/Family	94 (72.3)	72 (77.4)		
Roommates	15 (11.5)	6 (6.5)		
Other	7 (5.1)	0 (0)		
Ethnicity, N (%)				
Caucasian	99 (65.1)	66 (66.7)	χ^2 (1) = .06	.80
Non-Caucasian	53 (34.9)	33 (33.3)		
Diagnosis, N (%)				
Schizophrenia SD	110 (70.1)	85 (83.3)	χ^2 (1) = .06	.016
Affective Psychosis	47 (29.9)	17 (16.7)		
Age at Entry, Mean (SD)	22.4 (4.0)	23.0 (4.0)	t(257) = 1.01	.31
^a Duration of Untreated Psychosis, N (SD)	44.5 (95.6)	67.2 (106.6)	t(252) = 3.2	.001

^aDuration of untreated psychosis values are presented in raw form; however, these were analyzed using transformed data.

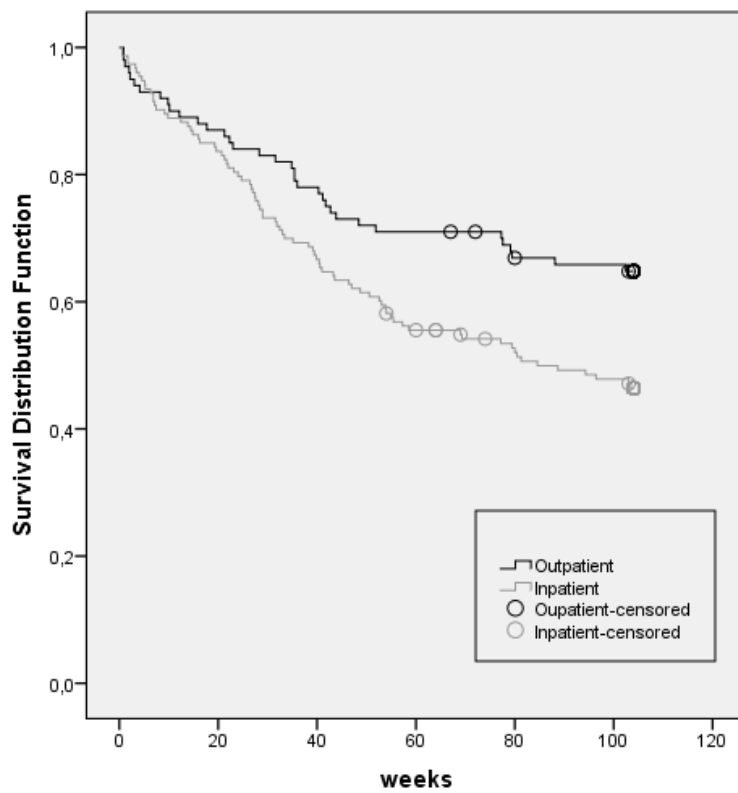
*p-value < 0.05 is regarded as statistically significant.

Supplementary Table 2

Clinical characteristics at baseline for inpatients and outpatients.

	Inpatients mean (SD)	Outpatients Mean (SD)	Statistic (df)	p-value*
Suicidality (n =244)	2.42 (1.7)	2.17 (1.4)	t(242) = 1.28	.22
Guilt (n =245)	2.58 (1.9)	2.54 (1.7)	t(243) = .19	.85
Hostility (n =245)	3.57 (1.9)	2.87 (1.7)	t(242) = 3.04	.003
Elevated mood (n =244)	2.24 (1.7)	1.83 (1.4)	t(242) = 2.00	.047
Grandiosity (n =245)	3.53 (2.3)	3.44 (2.3)	t(242) = .28	.78
Suspiciousness (n =245)	5.10 (1.8)	4.75 (1.8)	t(242) = 1.48	.14
Hallucinations (n =245)	3.96 (1.9)	3.70 (1.9)	t(242) = 1.10	.28
Unusual thought content (n =245)	5.47 (1.3)	5.12 (1.3)	t(242) = 2.00	.048
Bizarre behavior (n =245)	3.90 (1.7)	3.04 (1.6)	t(242) = 3.97	<.001
BPRS total score (n =242)	67.27 (12.6)	62.53 (11.6)	t(242) = 3.00	.003
SANS total score (n =257)	30.9 (15.6)	29.6 (15.8)	t(242) = .65	.52
GAF score (n=258), median (range)	30 (10-65)	30 (10-51)	U = 5541	<.001

*p-value < 0.05 is regarded as statistically significant.



Supplementary Figure 1. 7 estimate for time to subsequent hospitalization