

Figure 1S. Suicide Decedent Validation Process for Veteran Status

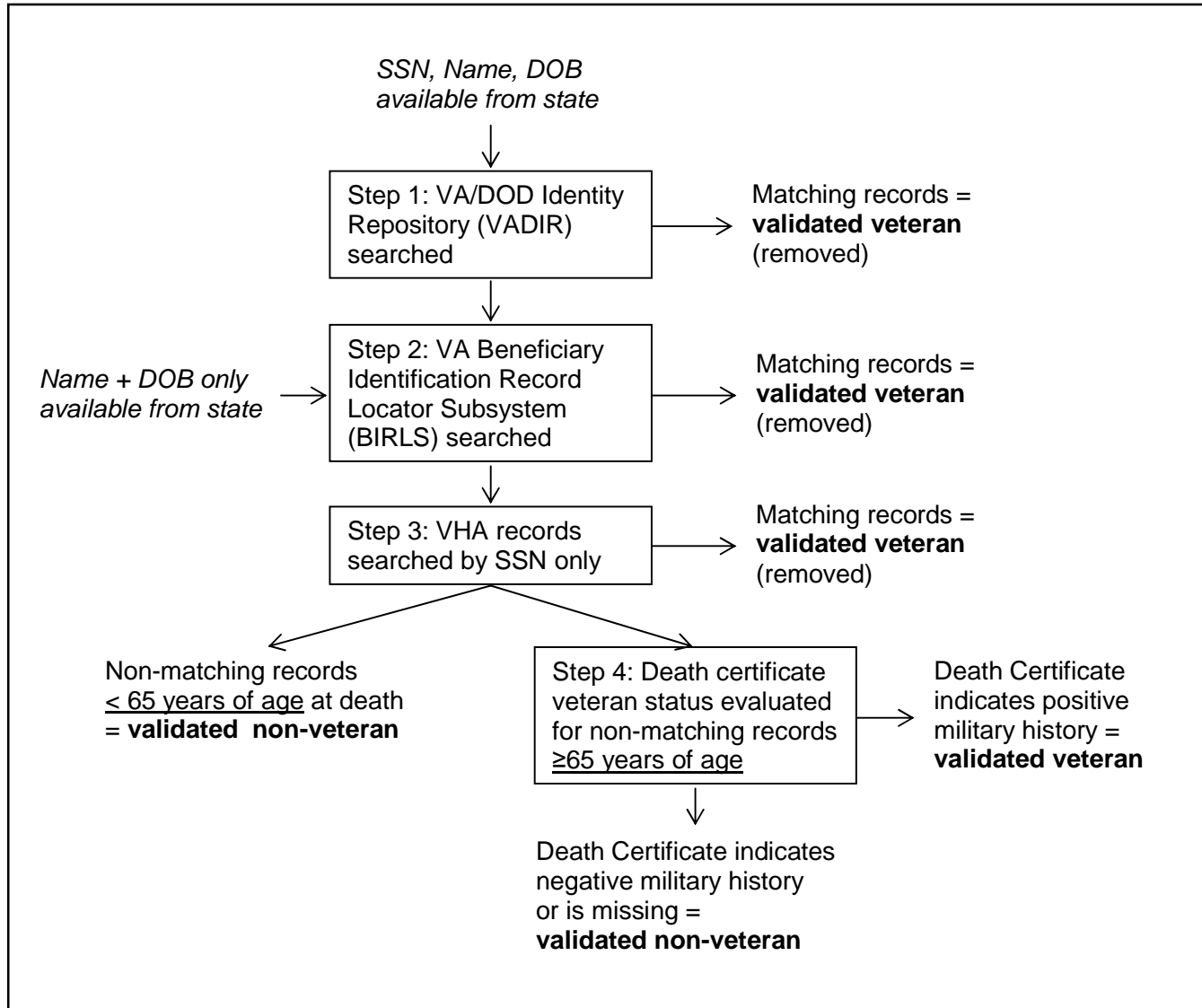
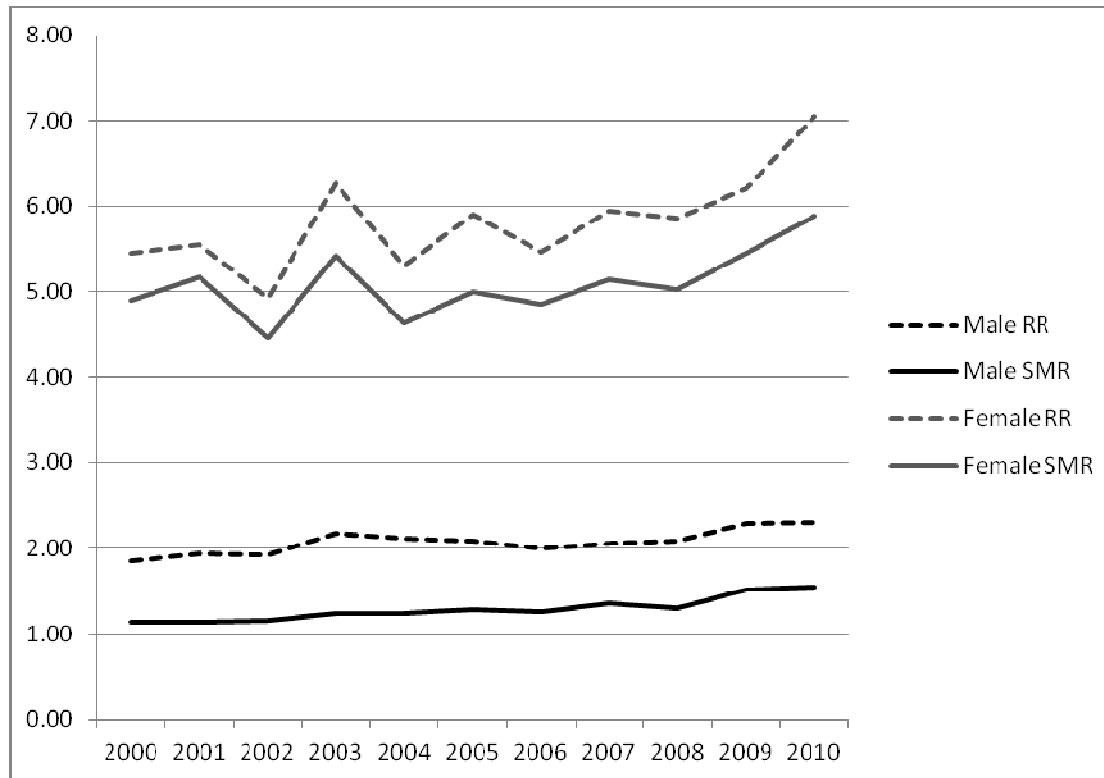


Figure 2S. Sensitivity analysis of gender-specific direct age-adjusted relative rate ratios versus standardized mortality ratios to compare Veteran and non-Veteran suicide rates across 23 states, 2000-2010



The 23 states included in this study are: New Jersey, New York, Pennsylvania, Rhode Island, Iowa, Kansas, Michigan, Minnesota, Nebraska, Alabama, Arkansas, Florida, Louisiana, North Carolina, Tennessee, Texas, West Virginia, Alaska, Idaho, Montana, Oregon, Utah, and Washington

Table 1S. Age Standardized Suicide Mortality Ratios for Veterans compared to Non-Veterans by Year and Gender

Year	Total					Males					Females				
	N	O	E	SMR ^a	95% CI	N	O	E	SMR	95% CI	N	O	E	SMR	95% CI
2000	13278669	3794	1416	1.19	1.10-1.28	12498575	3601	3162	1.14	1.05-1.23	780094	193	39	4.90	3.65-6.54
2001	13064182	3842	1429	1.18	1.10-1.27	12275815	3634	3230	1.13	1.04-1.22	788367	208	40	5.17	3.87-6.88
2002	12827234	3859	1437	1.19	1.11-1.28	12032271	3666	3197	1.15	1.06-1.24	794963	193	43	4.46	3.32-5.94
2003	12624648	3946	1381	1.30	1.21-1.40	11818484	3710	2992	1.24	1.15-1.34	806164	236	44	5.42	4.08-7.17
2004	12496571	3852	1383	1.30	1.20-1.40	11674301	3633	2919	1.24	1.15-1.34	822270	219	47	4.64	3.48-6.15
2005	12278056	3904	1366	1.34	1.24-1.44	11440541	3665	2865	1.28	1.18-1.38	837515	239	48	5.00	3.77-6.61
2006	12106871	3819	1358	1.32	1.22-1.42	11255666	3590	2846	1.26	1.16-1.36	851205	229	47	4.86	3.65-6.43
2007	11910491	3938	1359	1.43	1.32-1.54	11047668	3673	2709	1.36	1.25-1.47	862823	265	51	5.15	3.90-6.77
2008	12050718	4088	1451	1.37	1.27-1.47	11177045	3822	2936	1.30	1.21-1.41	873673	266	53	5.03	3.81-6.61
2009	11513684	4109	1319	1.60	1.48-1.72	10629378	3829	2522	1.52	1.41-1.64	884306	280	51	5.45	4.14-7.15
2010	11299133	4057	1299	1.63	1.58-1.68	10406760	3748	2439	1.54	1.49-1.59	892373	309	52	5.89	5.23-6.57

N = size of population at risk, O = observed deaths, E = expected deaths, SMR = Standardized Mortality Ratio, CI = Confidence Interval

^aTotal SMR is age- and gender-standardized

Table 2S. Age Standardized Suicide Mortality Ratios for VHA-Veterans compared to Non-VHA Veterans by Year and Gender

Year	Total					Males					Females				
	N	O	E	SMR ^a	95% CI	N	O	E	SMR	95% CI	N	O ^b	E	SMR	95% CI
2000	1877407	647	514	1.25	1.05-1.48	1698682	634	461	1.37	1.15-1.64	178725	13*	58	0.22	0.08-0.60
2001	2107088	682	588	1.15	0.97-1.37	1930472	662	531	1.25	1.05-1.49	176616	20	61	0.33	0.12-0.81
2002	2304330	739	648	1.12	0.95-1.33	2114944	716	594	1.20	1.01-1.43	189386	23	64	0.36	0.14-0.88
2003	2446626	714	736	0.96	0.81-1.14	2256368	698	668	1.05	0.88-1.24	190258	16*	74	0.22	0.08-0.56
2004	2542085	764	743	1.03	0.86-1.21	2343768	744	678	1.10	0.92-1.30	198317	20	67	0.30	0.11-0.75
2005	2617690	783	815	0.96	0.81-1.13	2411987	756	746	1.01	0.85-1.20	205703	27	71	0.38	0.15-0.92
2006	2649063	789	816	0.96	0.81-1.14	2437872	771	745	1.04	0.87-1.23	211191	18*	73	0.25	0.09-0.63
2007	2664079	768	883	0.87	0.73-1.03	2446379	747	801	0.93	0.78-1.11	217700	21	84	0.25	0.09-0.62
2008	2686979	830	897	0.93	0.78-1.10	2456679	808	806	1.00	0.84-1.19	230300	22	90	0.24	0.09-0.61
2009	2758958	831	993	0.84	0.71-0.99	2514208	803	889	0.90	0.76-1.07	244750	28	102	0.28	0.11-0.66
2010	2844529	785	1056	0.74	0.69-0.79	2597248	757	942	0.80	0.75-0.86	247281	28	117	0.24	0.16-0.34

N = size of population at risk, O = observed deaths, E = expected deaths, SMR = Standardized Mortality Ratio, CI = Confidence Interval

^a Total SMR is age- and gender-standardized

^b The number of suicides observed for female VHA Veterans in 2000, 2003, and 2006 is less than 20 warranting caution when interpreting SMRs for female VHA Veterans in these years.