

CPIC Training Participation Appendices

Appendix Figure 1: CONSORT Design of recruitment, enrollment of agencies, programs, staff.

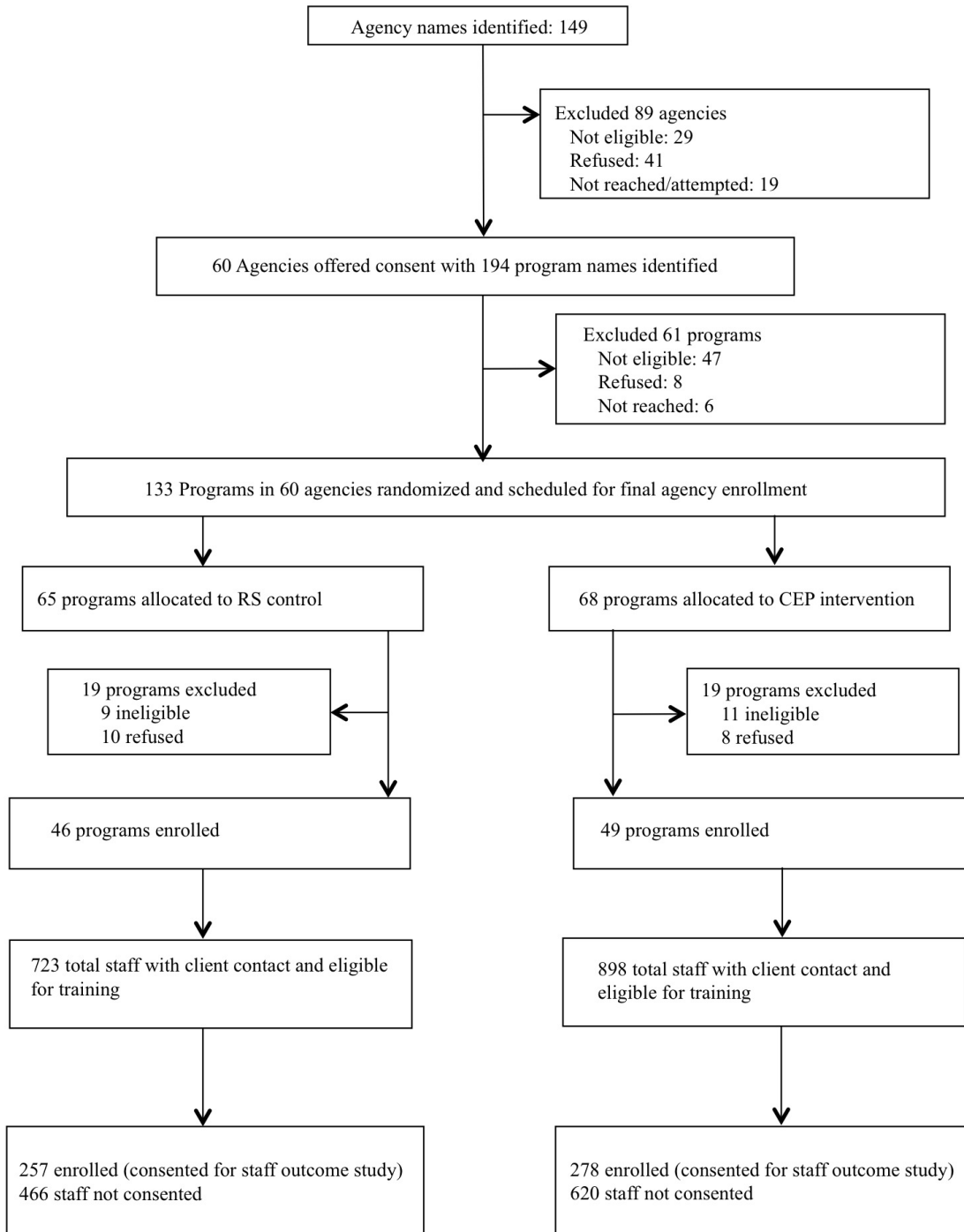


Figure 1: Trial profile

\*One administrator was not counted due to participation in both RS and CEP intervention arms.

**Appendix A – Items on Administrator Baseline Survey asking number of staff with direct client contact**

1. Approximately how many people—*both paid and volunteer*—work in your organization?
  - a. Number of Paid employees \_\_\_\_\_
  - b. Number of Volunteer workers \_\_\_\_\_
  
2. Approximately how many full-time equivalent (FTE) *paid staff* does your organization employ in each of the following categories? (If none, please write NONE or 0).

Psychiatrists	_____ FTE
Psychologists (licensed or waived)	_____ FTE
Professional Social Workers (licensed or waived)	_____ FTE
Marriage and Family Therapists (licensed or waived)	_____ FTE
Other Mental Health Staff (e.g. occupational therapist, psychiatric nurses or technicians, etc) (please specify) _____	_____ FTE
 Substance Abuse Specialists (licensed or certified)	 _____ FTE
 Physicians (excluding Psychiatrists)	 _____ FTE
Other licensed medical staff (e.g., RNs, NPs, Phys Assistants) (please specify) _____	_____ FTE

**Appendix B. Characteristics of programs, total staff, and enrolled staff by intervention condition\***

	Overall		RS		CEP	
<b>Programs</b>						
Number of programs, n	95		46		49	
South Los Angeles (vs. Metro), n, %	52	54.7	24	52.2	28	57.1
Service sector, n, %						
Healthcare sectors						
Primary care	17	17.9	8	17.4	9	18.4
Mental health services	18	18.9	10	21.7	8	16.3
Substance abuse	20	21.1	11	23.9	9	18.4
Social-community sectors						
Homeless services	10	10.5	5	10.9	5	10.2
Community-based <sup>†</sup>	30	31.6	12	26.1	18	36.7
# programs ≥1 staff participate in kick-off conference, n, %	45.7	47.4	22	44.9	23	46.9
<b>Eligible staff<sup>‡</sup></b>						
Number of total staff with client contact, <sup>¶</sup> n	1621		723		898	
Attend kick off conference, n, %	104	6.4	56	7.7	48	5.3
South Los Angeles (vs. Metro), n,%	809	49.9	320	44.3	489	54.5
Service sector, n, %						
Healthcare sectors						
Primary care	493	30.4	201	27.8	292	32.5
Mental health services	290	17.9	110	15.2	180	20.0
Substance abuse	264	16.3	132	18.3	132	14.7
Social-community sectors						
Homeless services	168	10.4	94	13.0	74	8.2
Community-based	406	25.0	186	25.7	220	24.5

\*Chi-square test was used for a comparison between the two study groups. Analysis of staff data was accounted for the design effect of the cluster randomization.  $p > 0.05$  for all comparisons between the two study groups. <sup>†</sup>Community-based programs: social services, child welfare, faith-based, food banks, parks and recreation, senior centers, barber shops, beauty salons, exercise clubs;

<sup>‡</sup>Total staff were any administrators or providers at enrolled study programs. Study providers are defined as any individuals – volunteers and employed, professional and non-professionals with direct client contact. Total staff numbers were estimated from administrator surveys. <sup>¶</sup>One provider was across intervention arms and excluded for the count.

## CPIC Training Participation Appendices

**Appendix C** Staff participation outcomes in training activities among the subset of 70 programs that had any participation by intervention status\*

Variable	RS		CEP		Group effect		
	Estimate	95% CI	Estimate	95% CI	<i>t</i>	<i>df</i>	<i>p</i>
<i>Primary outcome</i>							
Total hours in training, mean	.46	0.17-0.75	2.47	1.1-3.85	4.1	69	<.001
<i>Within type of programs</i>							
Healthcare programs	.58	.20-.97	2.01	.25-3.78	2.2	69	.031
Primary care	.31	-.01 to .62	.71	-.05-1.47	1.4	69	.152
Mental health services	.53	-.13 to 1.19	4.08	-1.37-9.52	2.9	69	.005
Substance abuse	.43	-.17-1.03	4.03	1.52-6.53	2.6	69	.011
Social-community programs	.27	.07-.48	3.24	1.93-4.55	5.9	69	<.001
Homeless services	.17	.00-.35	5.06	-1.12-11.23	7.3	69	<.001
Community-based programs <sup>a</sup>	.26	.08-.43	3.49	1.84-5.15	6.1	69	<.001
<i>Secondary outcomes-collaborative care component</i>							
Any CBT Training, <sup>b</sup> %	7.6	2.69-12.51	12.34	4.96-19.71	1.1	69	.268
Total hours in CBT training, mean	.19	.04-.34	1.08	.28-1.89	3.1	69	.003
Any CM training, <sup>c</sup> %	4.57	1.41-7.74	19.36	9.66-29.07	3.5	69	<.001
Total hours in CM training, mean	.11	.03-.2	.8	.41-1.18	4.7	69	<.001
Any med training, <sup>d</sup> %	2.91	-.23 to 6.04	8.45	3.86-13.04	2	69	.053
Total hours in MED training, mean	.02	-.01 to .05	.08	.03-.13	2	69	.053
Any other types of training, <sup>e</sup> %	6.85	3.62-10.08	11.15	4.79-17.51	1.4	69	.177
Total hours in other types of training, mean	.11	.03-.18	.6	.23-.96	3.6	69	<.001

\*Logistic regression models for binary variables or log-linear regression models for total hours adjusted for community and accounted for the design effect of the cluster randomization; full sample analyses were also controlled for sector.

<sup>a</sup>social services agencies, faith-based, senior centers, parks and recreation, barber shops.

<sup>b</sup>cognitive behavioral therapy.

<sup>c</sup>care management.

<sup>d</sup>antidepressant medication management and education.

<sup>e</sup>administrator training in team building, grant writing for programs, active listening, “resiliency-class”.