

Figure 1. FFS Second Generation Antipsychotic (SGA/AAP) Utilization Rates Increase Steadily until 2008.

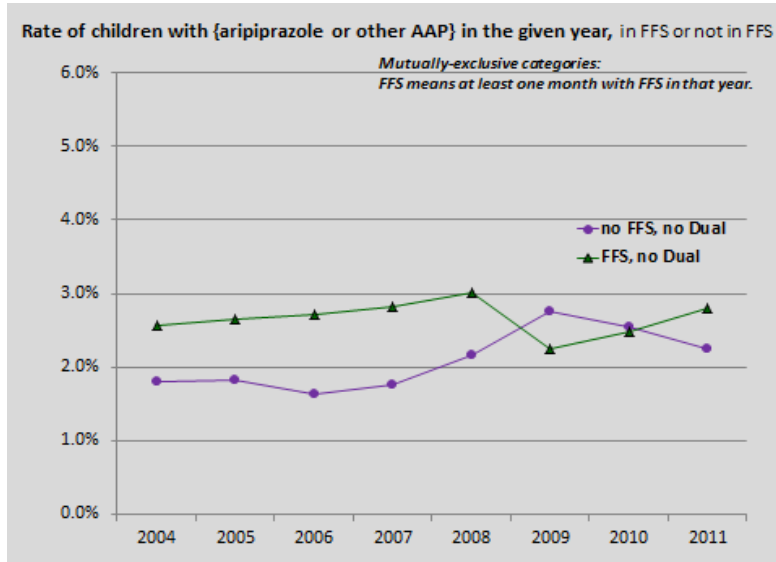


Figure 2. Increasing Monthly Second Generation Antipsychotic/Aripiprazole Utilization until April 2009

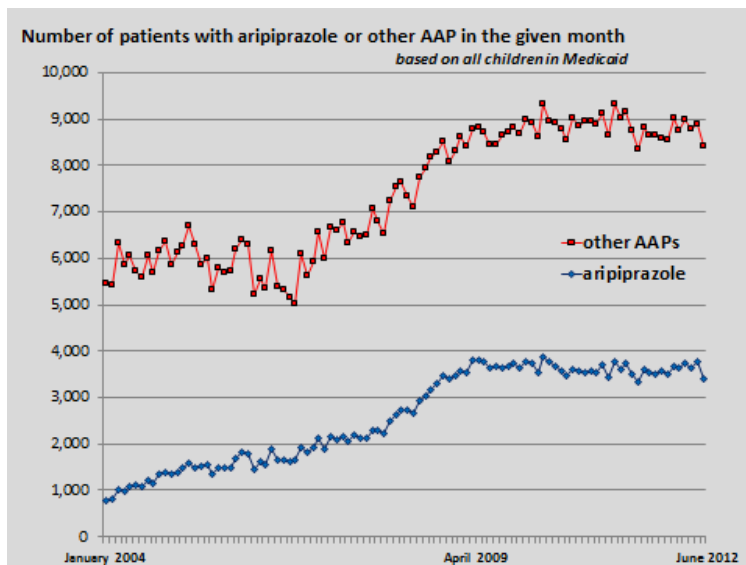


Figure 3. % Second Generation Antipsychotic Utilization by Month, Pre, Post, and During IN Medicaid Program Changes (75 time points starting Oct 2005-Dec 2011).

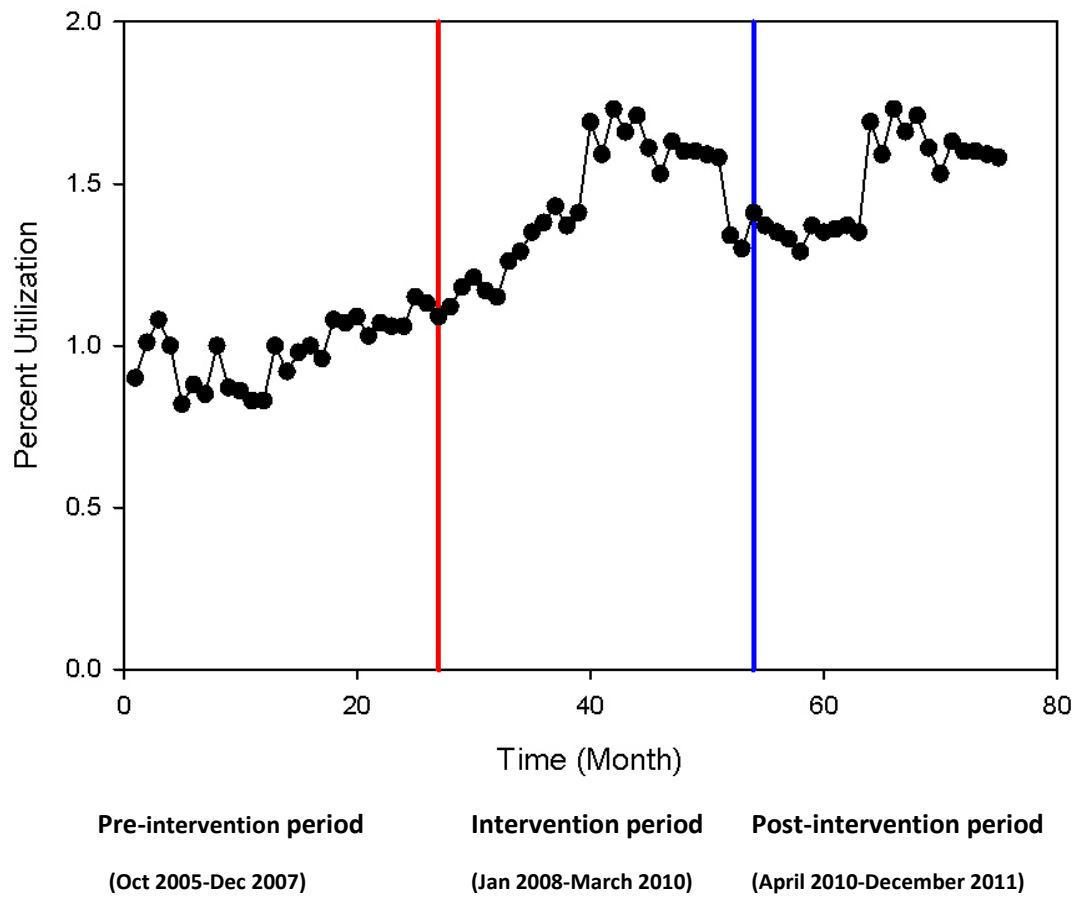


Figure 4. Monthly Cost of Second Generation Antipsychotics (SGAs)(\$s Per Member Per Month)

