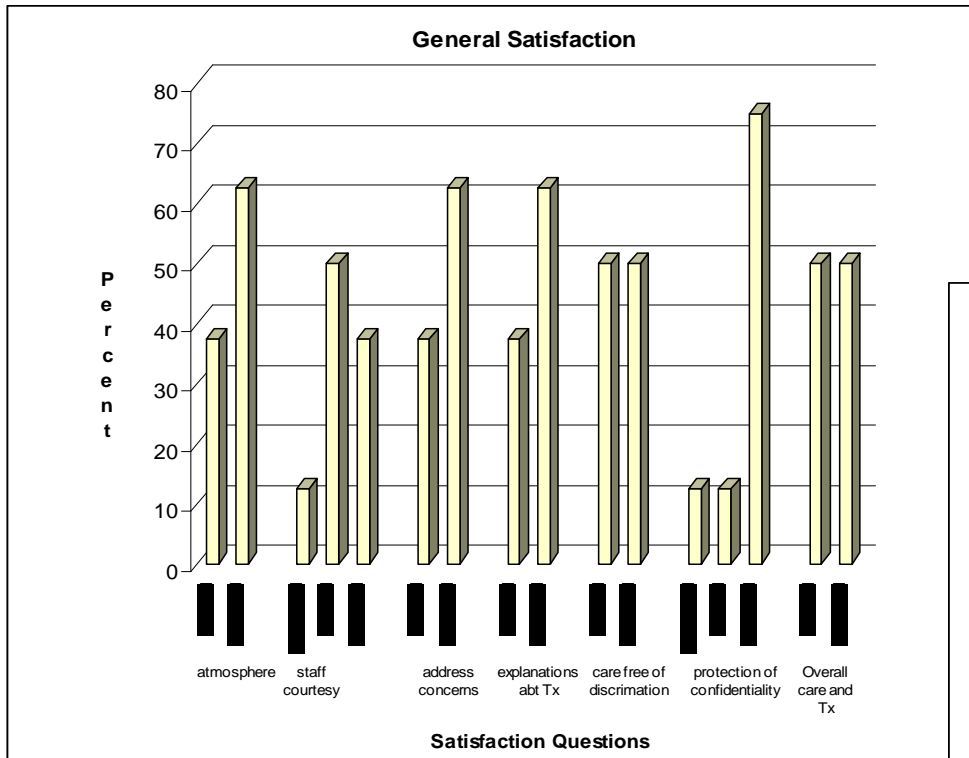


ONLINE APPENDIX 1: Early Outcomes – Patient Satisfaction Survey (n=8)

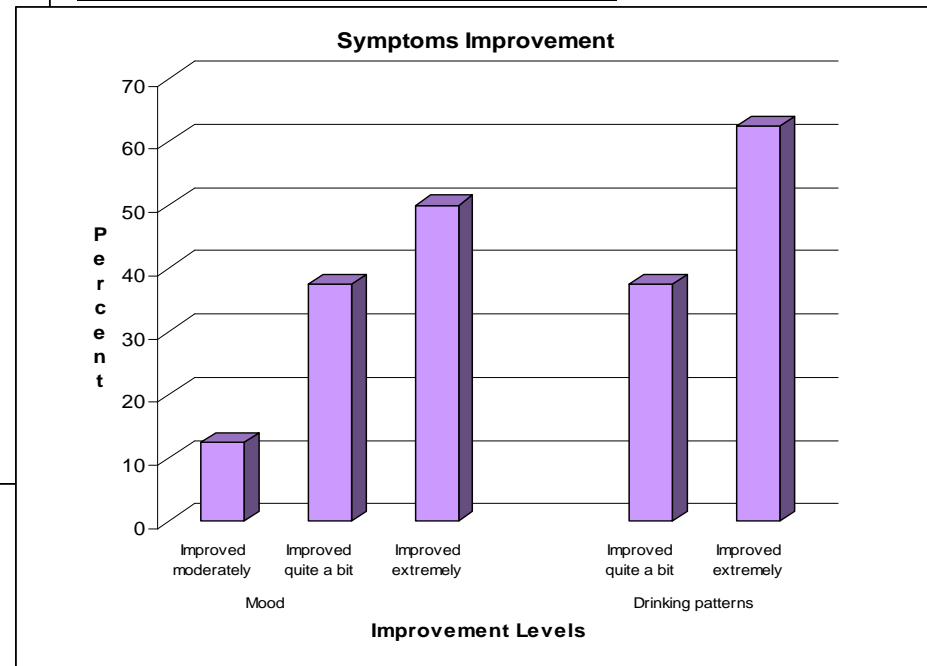


QIDS scores of 15.1 versus 9.3, $p < .03$

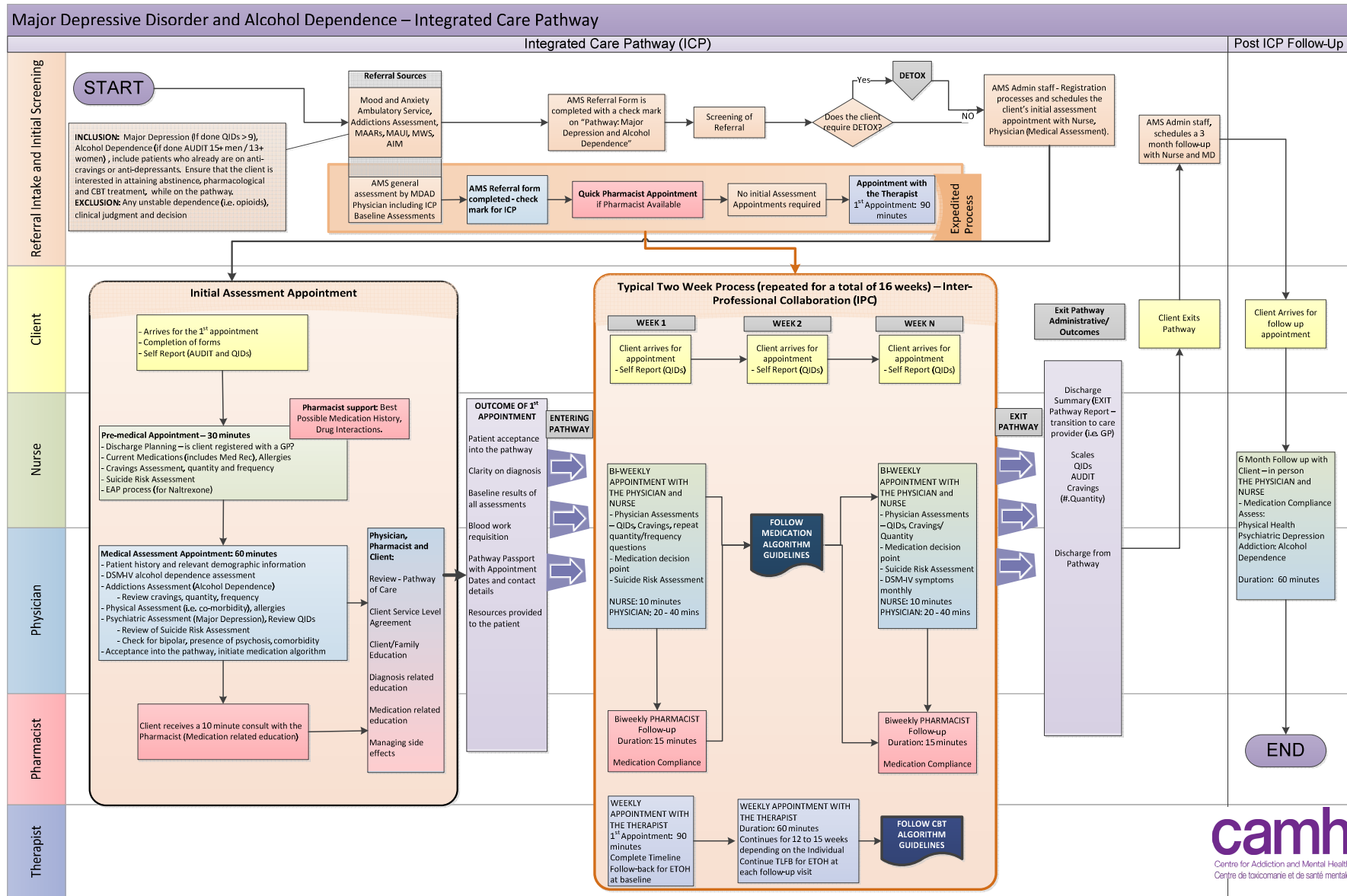
BDI scores of 28.3 versus 16.7, $p < .003$

Reduction in the % of heavy drinking days from 42% to 23%, $p < .04$

Preliminary results: Reduction in symptoms



ONLINE APPENDIX 2: High Level Process Map



ONLINE APPENDIX 3: Visual of Medication Algorithm

Pharmacotherapy for Major Depression and Alcohol Dependence																													
<i>*Antidepressants algorithm is adapted from the Texas Medication Algorithm</i>																													
Antidepressant Trials: Trial A - Sertraline (Fluoxetine, Venlafaxine XR, Mirtazapine -if Sertraline previously tried and failed) Trial B - Untried drug from Trial A Group Trial C - Untried drug from Trials A and B Groups																													
Type	Medication	Dose	Week 1							Week 2							Week 3							Week 4	Week 5	Week 6	Week 7	Week 8	Max Dose
			Day 1	2	3	4	5	6	7	8	9	10	11	12	13	14	15	16	17	18	19	20	21	22-28	29-35	36-42	43-49	50	
Antidepressants	Sertraline	mg AM	25	25	25	25	25	25	25	50	50	50	50	50	50	50	50	50	50	50	50	50	50	Increase dose by 50 mg every 2-4 weeks depending on tolerability and response					200 mg/day
	Fluoxetine	mg AM	10	10	10	10	10	10	10	20	20	20	20	20	20	20	20	20	20	20	20	20	20	Increase dose by 20 mg every 4 weeks depending on tolerability and response					80 mg/day
	Venlafaxine XR	mg AM	37.5	37.5	37.5	37.5	37.5	37.5	75	75	75	75	75	75	75	75	75	75	75	75	75	75	75	Increase dose by 75 mg every 2-4 weeks depending on tolerability and response					375 mg/day
	Mirtazapine	mg QHS	15	15	15	15	15	15	15	30	30	30	30	30	30	30	30	30	30	30	30	30	30	Increase dose by 15 mg every 2-4 weeks depending on tolerability and response					60 mg/day
Anti-craving	Trial 1: Naltrexone	mg/day	25	25	50	50	50	50	50	50	50	50	50	50	50	50	50	50	50	50	50	50	50	50	50	50	50	50	50 mg/day
	Trial 2: Acamprosate	mg TID	333 mg TID	333 mg TID	666 mg TID	666 mg TID	666 mg TID	666 mg TID	666 mg TID	666 mg TID	666 mg TID	666 mg TID	666 mg TID	666 mg TID	666 mg TID	666 mg TID	666 mg TID	666 mg TID	666 mg TID	666 mg TID	666 mg TID	666 mg TID	666 mg TID	666 mg TID	666 mg TID	666 mg TID	666 mg TID	666 mg TID	
	Trial 3: Topiramate	mg AM mg PM															25	25	25	25	25	25	25	25	25	25	25	300 mg/day	
Criteria for Anti-Craving Medication Treatment Non-Responders														Criteria for Anti-Craving Medication Switch															
Treatment non-Responder will have more than 7 (women) or 14 (men) drinks per week on average. OR More than 1 day on which more than 3 drinks (women) or 4 drinks (men) were consumed over the period of 2 weeks.														Being defined as a Treatment non-Responder at 3 consecutive visits will trigger a switch of anti-craving medication to the next level.															

Pharmacotherapy Decision Point Guideline: Adapted from the Texas Medication Algorithm

Tactics and Critical Decision Point and Critical Status Plan for the Treatment of Major Depressive Disorder					
STARTING POINT → Week 0 (CDP#1) QIDS ≥ 9 Symptomatic PLAN → Initiate antidepressant medication; adjust dose to lower end of therapeutic dose range or serum level.					
QIDS-C16 SCORE	Week 2	Week 4	Week 6	Week 9	Week 12
QIDS ≤ 5 (Remission)	Continue current dose.				Go to follow-up phase.
QIDS = 6-8 (Partial Response)	Gradually increase dose as tolerated.	<ul style="list-style-type: none"> Continue current dose. Consider increasing dose. 	Increase/maximize dose.	<ul style="list-style-type: none"> Increase dose. Switch to another antidepressant. 	<ul style="list-style-type: none"> Switch to another antidepressant. Increase dose and reevaluate in 2 weeks.
QIDS = 6-8 (SEs intolerable)	<ul style="list-style-type: none"> Continue current dose and address Side Effects (SEs). Decrease dose and continue for 2 additional weeks. Switch to another antidepressant. 	<ul style="list-style-type: none"> Continue current dose and address SEs. Switch to another antidepressant. 	<ul style="list-style-type: none"> Continue current dose and address SEs. Switch to another antidepressant. 		
QIDS ≥ 9 (Non-response)	Gradually increase dose as tolerated.	<ul style="list-style-type: none"> Increase dose. Switch to another antidepressant. 	Switch to another antidepressant.	Switch to another antidepressant.	Switch to another antidepressant.
QIDS ≥ 9 (SEs intolerable)	<ul style="list-style-type: none"> Decrease dose and continue for 2 additional weeks. Switch to another antidepressant. 	<ul style="list-style-type: none"> Switch to another antidepressant. 			