

Standard operation procedure: Participant is out of reach

Date of talk: If the participant is not reachable at the agreed date....

- ➔ Call **two times** again at the same day

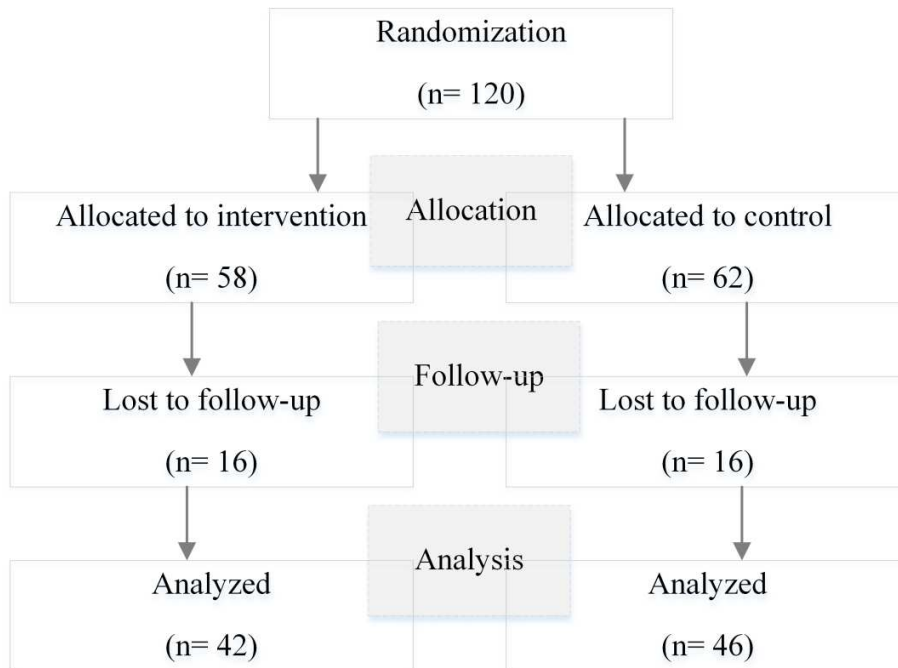
- ➔ If the patient is not reached:
 - Try **one week two times** a day to reach the participant

 - **Day 2** and **4** after agreed date: send text-message to remind the participant of the call

- ➔ If the participant is reached:
 - make up for the talk/interview or find a new date.

- ➔ If the participant is not reached for one week contacting is stopped.

Flow of participants through the trial



Baseline characteristics of the study participants

	Total		Intervention group		Control group		Chi ² / t	p-value
	N	%	N	%	N	%		
Participants	120		58	48.3	62	51.7		
Age at baseline, years (M±SD)	42.92±12.94		43.94±13.17		41.95±12.75		.84	.401
Females	50	41.7	27	46.6	23	37.1	1.10	.204
<i>Diagnosis</i>								
Schizophrenia	96	80	46	79.3	45	72.6	1.18	.278
Bipolar disorder	24	20	12	20.7	12	27.4	.17	.682
<i>Medication</i>								
Lithium	13	10.8	5	13.8	8	12.9	1.02	.313
Antidepressants	53	44.2	20	34.5	33	53.2	4.27	.039
Antiepileptics	27	22.5	18	31.0	9	14.5	4.69	.030
Benzodiazepines	23	19.2	11	19.0	12	19.4	.01	.957
Clozapine	17	14.2	6	10.3	11	17.7	1.34	.246
Typical neuroleptics	23	19.2	12	20.7	11	17.7	.17	.682
Atypical neuroleptics	97	80.8	51	87.9	46	74.2	.37	.056
Sum of medication	2.28±1.01		2.29±.96		2.11±1.04		.99	.326
Medication: adherent (MARS-D)	53	44.2	24	41.3	29	46.8	.72	.396
Social desirability: Exaggeration of positive qualities (PQ+) (M±SD)	2.68±.846		2.64±.953		2.71±.76		-.42	.678
Social desirability: minimization of negative qualities (NQ) (M±SD)	1.14±.85		1.19±.86		2.71±.76		.52	.639

	Baseline (4 investigators)		6 months follow-up (4 investigators)	
	<i>Chi²/F</i>	<i>p-value</i>	<i>Chi²/F</i>	<i>p-value</i>
Medication adherence (MARS-D) <i>(adherent vs. non adherent)</i>	1.34	.721	.18	.606
Social desirability: Exaggeration of positive qualities (PQ+)	.64	.589	.55	.648
Social desirability: minimization of negative qualities (NQ-)	.66	.579	2.04	.116

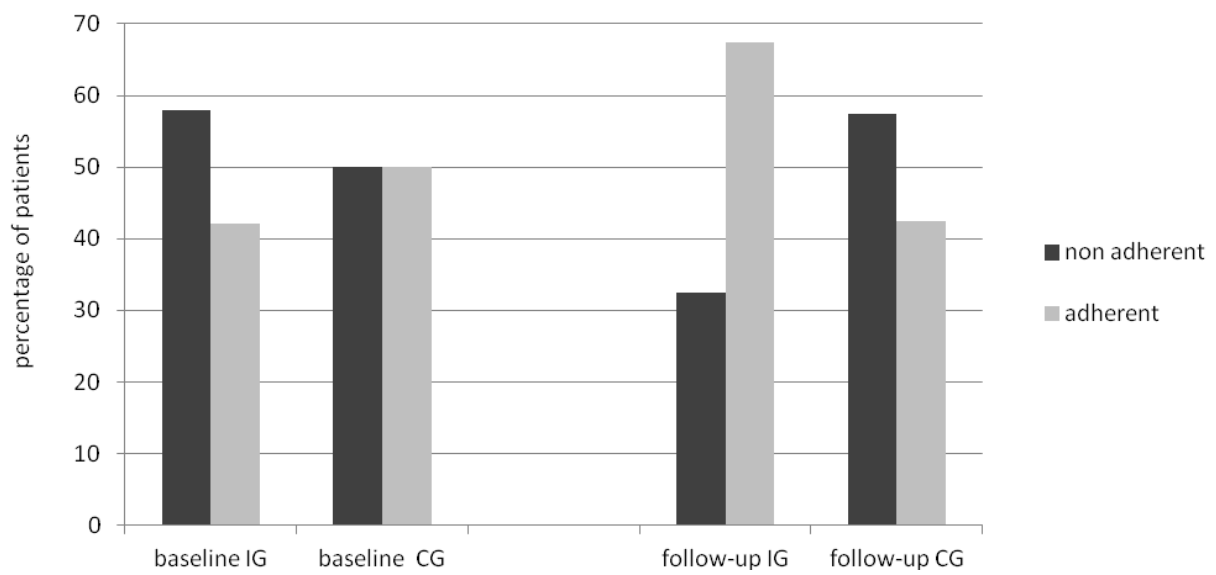
Interviewer bias

	Drop-out after 6 months	
	<i>Chi²/t</i>	<i>p-value</i>
Group	.08	.777
Age	-1.02	.308
Sex	.21	.151
Medication adherence (MARS-D) (<i>adherent vs. non adherent</i>)	.91	.339
Social desirability: Exaggeration of positive qualities (PQ+)	-1.90	.066
Social desirability: minimization of negative qualities (NQ-)	.14	.075

Predictors of drop-out

**Percentage of (non) adherent patients in the intervention and control group
at baseline and after six months**

(IG: intervention group receiving telemedical call and text messages, CG: control group)



Results of intention to treat analysis predicting medication adherence after three and six months

	Follow-up MARS-D (3 months)			Follow-up MARS-D (6 months)		
	OR	CI	p-value	OR	CI	p-value
Group (reference: control group)	1.89	.74 to 4.85	.187	6.79	1.98 to 23.28	.002
Age	1.03	.99 to 1.08	.135	1.02	.97 to 1.07	.482
Sex	.73	.27 to 2.00	.541	.73	.23 to 2.29	.591
MARS-D Baseline (reference: no adherent)	.52	.19 to 1.41	.200	.34	0.12 to .99	.049
Social desirability: Exaggeration of positive qualities (PQ+)	1.15	.59 to 2.24	.690	1.64	8.6 to 3.17	.139
Social desirability: Minimization of negative qualities (NQ)	.91	.45 to 1.87	.789	.61	.29 to 1.26	.178
Diagnosis (reference : bipolar disorder)	1.15	.64 to 6.08	.238	1.65	.29 to 9.24	.571
Sum of medications	1.15	.01 to 5.43	.585	.905	.50 to 1.63	.738

Results of per protocol analysis predicting medication adherence after three and six months

	Follow-up MARS-D 3 Month			Follow-up MARS-D 6 Month		
	OR	CI	p-value	OR	CI	p-value
Group (reference: control group)	1.69	.61 to 1.41	.314	5.04	1.54 to 16.53	.008
Age	1.04	.99 to 1.09	.122	1.02	.97 to 1.07	.481
Sex	.73	.25 to 2.15	.899	.63	.19 to 2.07	.446
MARS-D Baseline (reference: no adherent)	.52	.19 to 1.41	.561	.39	.13 to 1.16	.009
Social desirability: Exaggeration of positive qualities (PQ+)	1.17	.61 to 2.25	.647	1.59	.79 to 3.18	.188
Social desirability: Minimization of negative qualities (NQ)	.97	.49 to 1.87	.915	.56	.25 to 1.28	.171
Diagnosis (reference : bipolar disorder)	1.74	.55 to 5.43	.344	2.29	.29 to 17.53	.425
Sum of medications	1.09	.64 to 1.85	.762	1.03	.56 to 1.91	.916