

Supplementary File –**Search Strategy****PubMed Search, 6/5/17**

("Bipolar Disorder"[MeSH] OR "bipolar disorder"[Text Word] OR "bipolar disorders"[Text Word] OR "manic-depressive psychosis"[Text Word] OR "manic depressive psychosis"[Text Word] OR "bipolar affective psychosis"[Text Word] OR "bipolar affective psychoses"[Text Word] OR "manic-depressive psychoses"[Text Word] OR "manic depressive psychoses"[Text Word] OR "mania"[Text Word] OR "manias"[Text Word] OR "manic state"[Text Word] OR "manic states"[Text Word] OR "bipolar depression"[Text Word] OR "manic disorder"[Text Word] OR "manic disorders"[Text Word] OR "manic depression" [Text Word])

AND

("Psychiatric Status Rating Scales"[MeSH] OR "Severity of Illness Index"[MeSH] OR "Psychometrics"[MeSH] OR "Surveys and Questionnaires"[MeSH] OR "symptom measure"[Text Word] OR "symptom measures"[Text Word] OR "psychiatric rating scale"[Text Word] OR "psychiatric rating scales"[Text Word] OR "formal rating scale"[Text Word] OR "formal rating scales"[Text Word] OR "mental status schedule"[Text Word] OR "mental status schedules"[Text Word] OR "measurement-based care"[Text Word] OR "measurement based care"[Text Word] OR "psychometrics"[Text Word] OR "psychometric"[Text Word] OR "surveys and questionnaires"[Text Word] OR "questionnaires and surveys"[Text Word] OR "survey methods"[Text Word] OR "survey method"[Text Word] OR "survey methodology"[Text Word] OR "community surveys"[Text Word] OR "community survey"[Text Word] OR "questionnaire design"[Text Word] OR "questionnaire designs"[Text Word] OR "questionnaire"[Text Word] OR "questionnaires"[Text Word] OR "surveys"[Text Word] OR "survey"[Text Word] OR "treatment to target"[Text Word] OR "measurement feedback system"[Text Word] OR "measurement feedback systems" [Text Word] OR "severity of illness index" [Text Word] OR "self rating" [Text Word] OR "self concept" [Text Word] OR "self evaluation" [Text Word] OR "self report" [Text Word] OR "computerized adaptive testing" [Text Word] OR "item response theory"[Text Word])

AND

("Reproducibility of Results"[MeSH] OR "reproducibility of results"[Text Word] OR "reproducibility of findings"[Text Word] OR "reliability of results"[Text Word] OR "validity of results"[Text Word] OR "face validity"[Text Word] OR "reliability and validity"[Text Word] OR "validity and reliability"[Text Word] OR "test-retest reliability"[Text Word] OR "test-retest reliabilities"[Text Word] OR "test retest reliability"[Text Word] OR "test retest reliabilities"[Text Word] OR "assessment"[Text Word] OR "assessing"[Text Word] OR "assess"[Text Word] OR "validate"[Text Word] OR "validity"[Text Word] OR "validation"[Text Word] OR "validating"[Text Word] OR "test"[Text Word] OR "testing"[Text Word] OR "validation study"[Text Word] OR "validation studies"[Text Word] OR "reliability"[Text Word] OR "observational study"[Text Word] OR "observational studies"[Text Word] OR "treatment study"[Text Word] OR "treatment studies"[Text Word])

NOT

"Young Adult"[MeSH] OR "young adult"[Text Word] OR "Adolescent"[MeSH] OR "adolescent"[Text Word] OR "Child"[MeSH] OR "child"[Text Word]

Filters: Publication date from 1990/01/01; English

Total: 2227

PsycINFO (Ebsco) Search, 6/22/17

SU "Bipolar Disorder" OR TI "bipolar disorder" OR AB "bipolar disorder" OR KW "bipolar disorder" OR TI "bipolar disorders" OR AB "bipolar disorders" OR KW "bipolar disorders" OR TI "bipolar affective psychosis" OR AB "bipolar affective psychosis" OR KW "bipolar affective psychosis" OR TI "bipolar affective psychoses" OR AB "bipolar affective psychoses" OR KW "bipolar affective psychoses" OR TI "bipolar depression" OR AB "bipolar depression" OR KW "bipolar depression" OR SU "Mania" OR TI "mania" OR AB "mania" OR KW "mania" OR TI "manias" OR AB "manias" OR KW "manias" OR TI "manic state" OR AB "manic state" OR KW "manic state" OR TI "manic states" OR AB "manic states" OR KW "manic states" OR TI "manic-depressive psychosis" OR AB "manic-depressive psychosis" OR KW "manic-depressive psychosis" OR TI "manic-depressive psychoses" OR AB "manic-depressive psychoses" OR KW "manic-depressive psychoses" OR TI "manic disorder" OR AB "manic disorder" OR KW "manic disorder" OR TI "manic disorders" OR AB "manic disorders" OR KW "manic disorders" OR TI "manic depression" OR AB "manic depression" OR KW "manic depression"

AND

SU "Rating Scales" OR SU "Self-Report" OR SU "Self-Evaluation" OR SU "Psychometrics" OR SU "Surveys" OR SU "Questionnaires" OR TI "symptom measure" OR AB "symptom measure" OR KW "symptom measure" OR TI "symptom measures" OR AB "symptom measures" OR KW "symptom measures" OR TI "psychometry" OR AB "psychometry" OR KW "psychometry" OR TI "psychometrics" OR AB "psychometrics" OR KW "psychometrics" OR TI "psychometrics" OR AB "psychometric" OR KW "psychometric" OR TI "psychiatric status rating scale" OR AB "psychiatric status rating scale" OR KW "psychiatric status rating scale" OR TI "psychiatric status rating scales" OR AB "psychiatric status rating scales" OR KW "psychiatric status rating scales" OR TI "psychiatric rating scale" OR AB "psychiatric rating scale" OR KW "psychiatric rating scale" OR TI "psychiatric rating scales" OR AB "psychiatric rating scales" OR KW "psychiatric rating scales" OR TI "formal rating scale" OR AB "formal rating scale" OR KW "formal rating scale" OR TI "formal rating scales" OR AB "formal rating scales" OR KW "formal rating scales" OR TI "mental status schedule" OR AB "mental status schedule" OR KW "mental status schedule" OR TI "mental status schedules" OR AB "mental status schedules" OR KW "mental status schedules" OR TI "measurement-based care" OR AB "measurement-based care" OR KW "measurement-based care" OR TI "measurement based care" OR AB "measurement based care" OR KW "measurement based care" OR TI "surveys and questionnaires" OR AB "surveys and questionnaires" OR KW "surveys and questionnaires" OR TI "questionnaires and surveys" OR AB "questionnaires and surveys" OR KW "questionnaires and surveys" OR TI "survey methods" OR AB "survey methods" OR KW "survey methods" OR TI "survey method" OR AB "survey method" OR KW "survey method" OR TI "survey methodology" OR AB "survey methodology" OR KW "survey methodology" OR TI "community surveys" OR AB "community surveys" OR KW "community surveys" OR TI "community survey" OR AB "community survey" OR KW "community survey" OR TI "questionnaire design" OR AB "questionnaire design" OR KW "questionnaire design" OR TI "questionnaire designs" OR AB "questionnaire designs" OR KW "questionnaire designs" OR TI "questionnaire" OR AB "questionnaire" OR KW "questionnaire" OR TI "questionnaires" OR AB "questionnaires" OR KW "questionnaires" OR TI "surveys" OR AB "surveys" OR KW "surveys" OR TI "survey" OR AB "survey" OR KW "survey" OR TI "treatment to target" OR AB "treatment to target" OR KW "treatment to target" OR TI

"measurement feedback system" OR AB "measurement feedback system" OR KW
 "measurement feedback system" OR TI "measurement feedback systems" OR AB
 "measurement feedback systems" OR KW "measurement feedback systems" OR TI "severity of
 illness index" OR AB "severity of illness index" OR KW "severity of illness index" OR TI "self
 rating" OR AB "self rating" OR KW "self rating" OR TI "self-rating" OR AB "self-rating" OR KW
 "self-rating" OR TI "self concept" OR AB "self concept" OR KW "self concept" OR TI "self-
 concept" OR AB "self-concept" OR KW "self-concept" OR TI "self evaluation" OR AB "self
 evaluation" OR KW "self evaluation" OR TI "self-evaluation" OR AB "self-evaluation" OR KW
 "self-evaluation" OR TI "self report" OR AB "self report" OR KW "self report" OR TI "self-report"
 OR AB "self-report" OR KW "self-report" OR TI "computerized adaptive testing" OR AB
 "computerized adaptive testing" OR KW "computerized adaptive testing" OR TI "item response
 theory" OR AB "item response theory" OR KW "item response theory"

AND

SU "Test Reliability" OR SU "Test Validity" OR SU "Statistical Validity" OR TI "reproducibility"
 OR AB "reproducibility" OR KW "reproducibility" OR TI "reproducibility of results" OR AB
 "reproducibility of results" OR KW "reproducibility of results" OR TI "reproducibility of findings"
 OR AB "reproducibility of findings" OR KW "reproducibility of findings" OR TI "reliability" OR AB
 "reliability" OR KW "reliability" OR TI "reliability of results" OR AB "reliability of results" OR KW
 "reliability of results" OR TI "validity of results" OR AB "validity of results" OR KW "validity of
 results" OR TI "face validity" OR AB "face validity" OR KW "face validity" OR TI ("reliability" N5
 "validity") OR AB ("reliability" N5 "validity") OR KW ("reliability" N5 validity") OR TI "test-retest
 reliability" OR AB "test-retest reliability" OR KW "test-retest reliability" OR TI "test-retest
 reliabilities" OR AB "test-retest reliabilities" OR KW "test-retest reliabilities" OR TI "test retest
 reliability" OR AB "test retest reliability" OR KW "test retest reliability" OR TI "test retest
 reliabilities" OR AB "test retest reliabilities" OR KW "test retest reliabilities" OR TI "assessment"
 OR AB "assessment" OR KW "assessment" OR TI "assessing" OR AB "assessing" OR KW
 "assessing" OR TI "assess" OR AB "assess" OR KW "assess" OR TI "validate" OR AB "validate"
 OR KW "validate" OR TI "validity" OR AB "validity" OR KW "validity" OR TI "validation" OR AB
 "validation" OR KW "validation" OR TI "validating" OR AB "validating" OR KW "validating" OR TI
 "test" OR AB "test" OR KW "test" OR TI "testing" OR AB "testing" OR KW "testing" OR TI "tests"
 OR AB "tests" OR KW "tests" OR TI "evaluate" OR AB "evaluate" OR KW "evaluate" OR TI
 "evaluates" OR AB "evaluates" OR KW "evaluates" OR TI "evaluating" OR AB "evaluating" OR
 KW "evaluating" OR TI "evaluation" OR AB "evaluation" OR KW "evaluation"

AND

(MR "Empirical Study" OR MR "Clinical Trial" OR "validation study" OR "validation studies" OR
 "validation studies as topic" OR "observational study" OR "observational studies" OR
 "observational studies as topic" OR "treatment study" OR "treatment studies" OR "clinical
 protocol" OR "clinical protocols" OR "clinical research protocol" OR "clinical research protocols"
 OR "clinical trial" OR "clinical trials" OR "controlled clinical trial" OR "controlled clinical trials" OR
 "controlled clinical study" OR "controlled clinical studies" OR "randomized controlled trial" OR
 "randomized controlled trials" OR "randomized controlled study" OR "randomized controlled
 studies" OR "controlled trial" OR "controlled trials" OR "controlled study" OR "controlled studies")
 NOT (MR "Nonclinical Case Study" OR "editorial" OR "editorials" OR "case report" OR "case
 reports" OR "case study" OR "case studies")

NOT

(AG "Childhood" OR AG "Adolescence" OR TI "child" OR AB "child" OR KW "child" OR TI "children" OR AB "children" OR KW "children" OR TI "adolescent" OR AB "adolescent" OR KW "adolescent" OR TI "adolescents" OR AB "adolescents" OR KW "adolescents" OR TI "teen" OR AB "teen" OR KW "teen" OR TI "teens" OR AB "teens" OR KW "teens" OR TI "teenager" OR AB "teenager" OR KW "teenager" OR TI "teenagers" OR AB "teenagers" OR KW "teenagers")

AND

LA(English)

Limit to 1990-2017

Total results: 455

ProQuest Dissertations and Theses, 6/30/17

Exact("bipolar disorder") OR "bipolar disorder" OR "bipolar disorders" OR "manic-depressive psychosis" OR "manic depressive psychosis" OR "bipolar affective psychosis" OR "bipolar affective psychoses" OR "manic-depressive psychoses" OR "manic depressive psychoses" OR "mania" OR "manias" OR "manic state" OR "manic states" OR "bipolar depression" OR "manic disorder" OR "manic disorders" OR "manic depression"

AND

Exact("questionnaires") OR "severity of illness index" OR "symptom measure" OR "symptom measures" OR "psychiatric rating scale" OR "psychiatric rating scales" OR "formal rating scale" OR "formal rating scales" OR "rating scale" OR "rating scales" OR "mental status schedule" OR "mental status schedules" OR "measurement-based care" OR "measurement based care" OR

"psychometrics" OR "psychometric" OR "surveys and questionnaires" OR "questionnaires and surveys" OR "survey methods" OR "survey method" OR "survey methodology" OR "community surveys" OR "community survey" OR "questionnaire design" OR "questionnaire designs" OR "questionnaire" OR "questionnaires" OR "surveys" OR "survey" OR "treatment to target" OR "measurement feedback system" OR "measurement feedback systems" OR "self rating" OR "self-rating" OR "self concept" OR "self-concept" OR "self evaluation" OR "self-evaluation" OR "self report" OR "self-report" OR "computerized adaptive testing" OR "item response theory"

AND

Exact("tests" OR "validity" OR "reliability") OR "reproducibility of results" OR "reproducibility of findings" OR "reliability of results" OR "validity of results" OR "face validity" OR "reliability and validity" OR "validity and reliability" OR "test-retest reliability" OR "test-retest reliabilities" OR "test retest reliability" OR "test retest reliabilities" OR "assessment" OR "assessing" OR "assess" OR "validate" OR "validity" OR "validation" OR "validating" OR "test" OR "tests" OR "testing" OR "reliability" OR "evaluate" OR "evaluates" OR "evaluating" OR "evaluation"

AND

(Exact("validation studies" OR "clinical trials") OR "validation studies" OR "validation study" OR "observational studies" OR "observational study" OR "treatment studies" OR "treatment study" OR "clinical protocols" OR "clinical protocol" OR "clinical trial" OR "clinical trials" OR "randomized controlled trial" OR "randomized controlled trials" OR "controlled clinical trial" OR "controlled clinical trials" OR "major clinical study" OR "major clinical studies" OR "controlled study" OR "controlled studies") NOT (Exact("editorials" OR "letters" OR "case studies") OR "editorial" OR "editorials" OR "case reports" OR "case report" OR "case studies" OR "case study")

NOT

"child" OR "children" OR "adolescent" OR "adolescents" OR "teen" OR "teens" OR "teenager" OR "teenagers"

Filters: Publication date from 1990/01/01; English

Total: 5

Embase (Elsevier) Search, 6/22/17

('bipolar disorder'/exp OR 'bipolar disorder' OR 'bipolar disorders' OR 'manic-depressive psychosis' OR 'bipolar affective psychosis' OR 'bipolar affective psychoses' OR 'manic-depressive psychoses' OR 'mania' OR 'manias' OR 'manic state' OR 'manic states' OR 'bipolar depression' OR 'manic disorder' OR 'manic disorders' OR 'manic depression')

AND

('psychiatric rating scale'/exp OR 'severity of illness index'/exp OR 'psychometry'/exp OR 'questionnaire'/exp OR 'symptom measure' OR 'symptom measures' OR 'psychometry' OR 'psychiatric status rating scale' OR 'psychiatric status rating scales' OR 'psychiatric rating scale' OR 'psychiatric rating scales' OR 'formal rating scale' OR 'formal rating scales' OR 'mental status schedule' OR 'mental status schedules' OR 'measurement-based care' OR 'measurement based care' OR 'psychometrics' OR 'psychometric' OR 'surveys and questionnaires' OR 'questionnaires and surveys' OR 'survey methods' OR 'survey method' OR 'survey methodology' OR 'community surveys' OR 'community survey' OR 'questionnaire design' OR 'questionnaire designs' OR 'questionnaire' OR 'questionnaires' OR 'surveys' OR 'survey' OR 'treatment to target' OR 'measurement feedback system' OR 'measurement feedback systems' OR 'severity of illness index' OR 'self rating' OR 'self-rating' OR 'self concept' OR 'self-concept' OR 'self evaluation' OR 'self-evaluation' OR 'self report' OR 'self-report' OR 'computerized adaptive testing' OR 'item response theory')

AND

('reproducibility'/exp OR 'reproducibility' OR 'reproducibility of results' OR 'reproducibility of findings' OR 'reliability of results' OR 'validity of results' OR 'face validity' OR 'reliability and validity' OR 'validity and reliability' OR 'test-retest reliability' OR 'test-retest reliabilities' OR 'test retest reliability' OR 'test retest reliabilities' OR 'assessment' OR 'assessing' OR 'assess' OR 'validate' OR 'validity' OR 'validation' OR 'validating' OR 'test' OR 'testing' OR 'tests' OR 'reliability' OR 'evaluate' OR 'evaluates' OR 'evaluating' OR 'evaluation')

AND

('validation study'/exp OR 'validation study' OR 'validation studies' OR 'validation studies as topic' OR 'observational study'/exp OR 'observational study' OR 'observational studies' OR 'observational studies as topic' OR 'treatment study' OR 'treatment studies' OR 'clinical protocol'/exp OR 'clinical protocol' OR 'clinical protocols' OR 'clinical research protocol' OR 'clinical research protocols' OR 'clinical trial'/exp OR 'clinical trial' OR 'clinical trials' OR 'major clinical trial' OR 'major clinical trials' OR 'major clinical study' OR 'major clinical studies' OR 'controlled clinical trial' OR 'controlled clinical trials' OR 'controlled clinical study' OR 'controlled clinical studies' OR 'randomized controlled trial' OR 'randomized controlled trials' OR 'randomized controlled study' OR 'randomized controlled studies' OR 'randomised controlled trial' OR 'randomised controlled trials' OR 'randomised controlled study' OR 'randomised controlled studies' OR 'controlled trial' OR 'controlled trials' OR 'controlled study' OR 'controlled studies') NOT ('editorial'/exp OR 'editorial' OR 'editorials' OR 'letter'/exp OR 'case report'/exp OR 'case report' OR 'case reports' OR 'case study'/exp OR 'case study' OR 'case studies')

NOT

'child'/exp OR 'child' OR 'children' OR 'adolescent'/exp OR 'adolescent' OR 'adolescents' OR
'teen' OR 'teens' OR 'teenager' OR 'teenagers'

AND

([1990-2017]/py)

AND

(english:la)

Total results: 2694

Cochrane Library Search, 6/19/17

"Bipolar Disorder"[MeSH] OR "bipolar disorder" OR "bipolar disorders" OR "manic-depressive psychosis" OR "manic depressive psychosis" OR "bipolar affective psychosis" OR "bipolar affective psychoses" OR "manic-depressive psychoses" OR "manic depressive psychoses" OR "mania" OR "manias" OR "manic state" OR "manic states" OR "bipolar depression" OR "manic disorder" OR "manic disorders" OR "manic depression"

AND

"Psychiatric Status Rating Scales"[MeSH] OR "Severity of Illness Index"[MeSH] OR "Psychometrics"[MeSH] OR "Surveys and Questionnaires"[MeSH] OR "symptom measure" OR "symptom measures" OR "psychiatric rating scale" OR "psychiatric rating scales" OR "formal rating scale" OR "formal rating scales" OR "rating scale" OR "rating scales" OR "mental status schedule" OR "mental status schedules" OR "measurement-based care" OR "measurement based care" OR "psychometrics" OR "psychometric" OR "surveys and questionnaires" OR "questionnaires and surveys" OR "survey methods" OR "survey method" OR "survey methodology" OR "community surveys" OR "community survey" OR "questionnaire design" OR "questionnaire designs" OR "questionnaire" OR "questionnaires" OR "surveys" OR "survey" OR "treatment to target" OR "measurement feedback system" OR "measurement feedback systems" OR "severity of illness index" OR "self rating" OR "self-rating" OR "self concept" OR "self-concept" OR "self evaluation" OR "self-evaluation" OR "self report" OR "self-report" OR "computerized adaptive testing" OR "item response theory"

AND

"Reproducibility of Results"[MeSH] OR "reproducibility of results" OR "reproducibility of findings" OR "reliability of results" OR "validity of results" OR "face validity" OR "reliability and validity" OR "validity and reliability" OR "test-retest reliability" OR "test-retest reliabilities" OR "test retest reliability" OR "test retest reliabilities" OR "assessment" OR "assessing" OR "assess" OR "validate" OR "validity" OR "validation" OR "validating" OR "test" OR "tests" OR "testing" OR "reliability" OR "evaluate" OR "evaluates" OR "evaluating" OR "evaluation"

AND

"Validation Studies"[Publication Type] OR "Validation Studies as Topic"[MeSH] OR "Observational Studies as Topic"[MeSH] OR "Clinical Protocols"[MeSH] OR "Clinical Trial"[Publication Type] OR "Clinical Trials as Topic"[MeSH] OR "Randomized Controlled Trials as Topic"[MeSH] OR "Controlled Clinical Trials as Topic"[MeSH] OR "validation studies" OR "validation study" OR "observational studies" OR "observational study" OR "treatment studies" OR "treatment study" OR "clinical protocols" OR "clinical protocol" OR "clinical trial" OR "clinical trials" OR "randomized controlled trial" OR "randomized controlled trials" OR "controlled clinical trial" OR "controlled clinical trials" OR "major clinical study" OR "major clinical studies" OR "controlled study" OR "controlled studies"

NOT

"Child"[MeSH] OR "Adolescent"[MeSH] OR "child" OR "children" OR "adolescent" OR "adolescents" OR "teen" OR "teens" OR "teenager" OR "teenagers"

*Limited to 1990 - present

**Cochrane does not have a limit for English language.

Total: 659

ClinicalTrials.gov, 6/22/17

"bipolar disorder" AND (test OR measure OR scale OR tool) AND validation

Total results: 11

*Search strategy kept simple for use in searching grey literature sources.

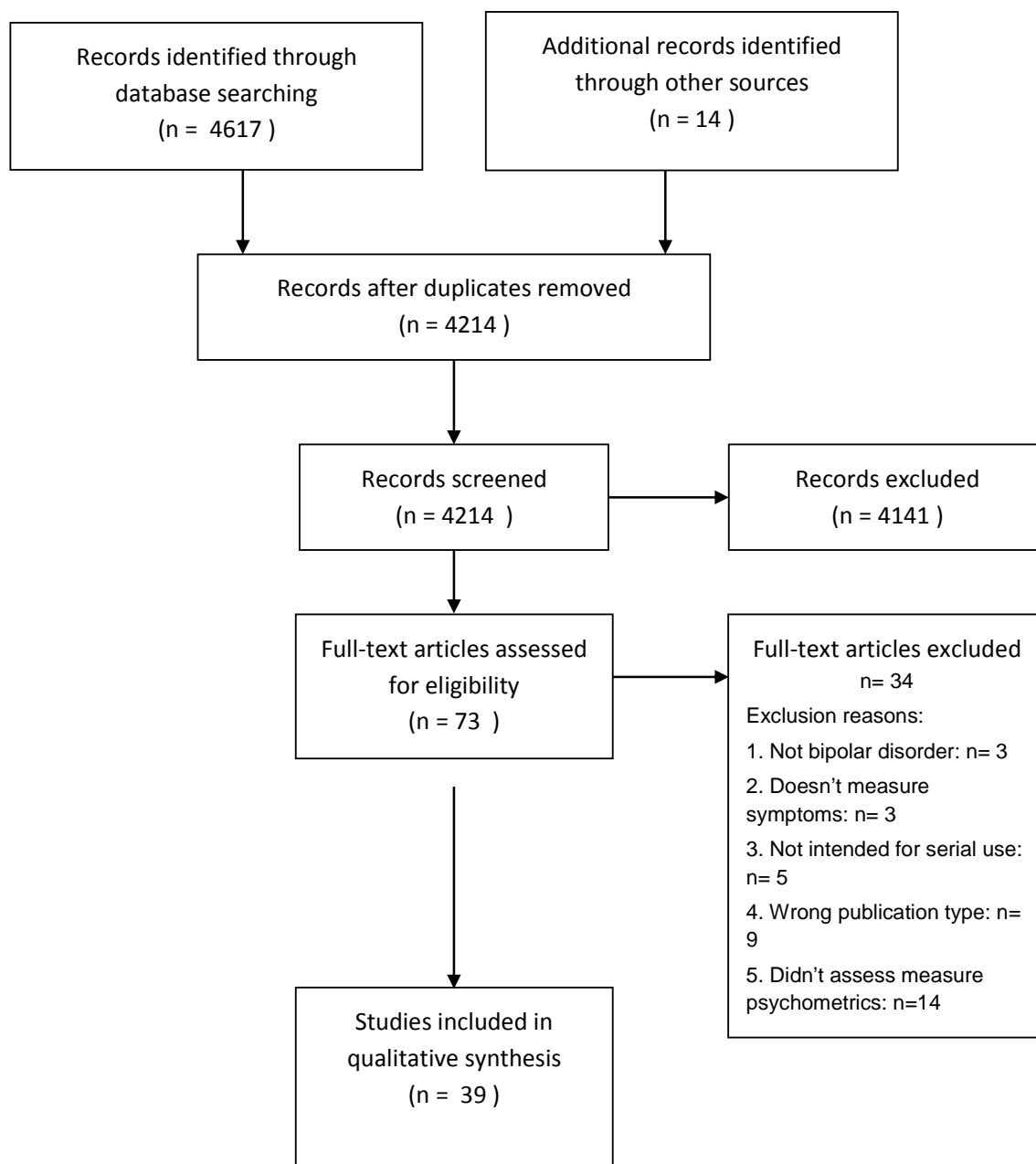
WHO ICTRP, 6/22/17

bipolar disorder AND test AND validation

Total results: 3

*Search strategy kept simple for use in searching grey literature sources.

Results of Literature Search



Supplementary Table 1. Results of Clinical Utility Scoring

		Brief <18 items	Assesses suicidal thoughts	Easy to score	Public clinical use	Sample size/item number ratio	Reliability – Internal consistency and inter-rater	Reliability - Test – retest	Validity - Content validity with DSM (DSM sx)	Validity - Concurrent validity	Validity - Convergent validity and/or Discriminant Validity	Sensitivity to change	Total
Measures Assessing Manic Symptoms													
<i>Patient Reported</i>													
Self-Report Manic Inventory (SRMI)		0	0	1	1		0.5	0.5	0.9	0.25	0.5	0.25	4.9
	Shugar, et al (24). 1992	48	No	Adding Y response items	Yes	211/47 = 4.5 for internal consistency,	Cronbach's $\alpha = .94$	$r_P = .93$,	Mania = 7 of 8	0 (not tested (n.t.))	SRMI higher for manic vs. non-manic group (F = 20.5, $p < 0.001$)	0 (n.t.)	
	Bräunig, et al (25). 1996	48	No	Adding Y response items	Yes	104/47 = 2.2 for concurrent validity, sensitivity to change	Cronbach's $\alpha = .94$	$r_P = .86$, Timeframe = 1 week	Mania = 7 of 8	SRMI w/ YMRS on manic subjects at baseline (r = .63, $p < 0.001$) SRMI w/ YMRS on manic subjects at post-TX (r = .89, $p < 0.001$)	SRMI higher for manic vs. non-manic group at baseline (t = 8.39, $p < 0.001$) SRMI higher for manic vs. non-manic group at post-TX (t = 3.22, $p = 0.02$)	Δ SRMI w/ Δ YMRS ($r_P = .78$) Decrease in SRMI scores over the course of TX (t = 4.62, $p < 0.001$)	
	Cooke, et al (26). 1996	48	No	Adding Y responses	Yes		0 (n.t.)	0 (n.t.)	0 (n.t.)	SRMI w/ YMRS (r = .75, $p < .05$)	0 (n.t.)	Δ SRMI w/ Δ YMRS at 2 visits in 6 month period ($r_P = .48$, $p = .016$)	
Altman Self-Rating Mania Scale (AMRS)		1	0	1	1		1	1	0.6	1	1	1	8.6
Subscales - Mania - Psychosis	Altman, et al (27). 1997	5	No	Adding responses	Yes	105/5 = 21	AMRS mania subscale (Cronbach's $\alpha = .79$) AMRS psychosis subscale (Cronbach's $\alpha = .65$)	AMRS mania subscale ($r_P = .86$, $p < 0.001$) AMRS psychosis	Mania = 5 of 8	ASRM mania w/ MRS total ($r_P = .72$, $p < 0.001$) ASRM mania and CARS-M ($r_P = .77$,	ASRM scales associated with diagnostic groups (F = 12.98, $p < 0.001$)	Decreased post TX scores for mania (t = 4.42, $p < .01$), psychosis	

- Irritability							AMRS irritability subscale (Cronbach's $\alpha = .65$)	subscale ($r_p = .89, p < 0.001$) AMRS irritability subscale ($r_p = .89, p < 0.001$) Timeframe = approximately 4 to 5 weeks		$p < 0.001$	AMRS mania subscale higher for mania vs. depressed group ($t = 11.26, p < 0.001$), and schizophrenic group ($t = 7.42, p < 0.001$), and schizoaffective ($t = 5.18, p < 0.001$) Psychotic subscale higher for manic vs. depressed ($t = 4.92, p < 0.001$), but not schizoaffective or schizophrenia Irritability subscale not significantly different across groups	($t = 3.44, p < 0.2$), and irritability ($t = 5.36, p < .01$)	
Interactive Computer Interview for Mania - Young Mania Rating Scale (ICI-M YMRS)		0	0	0	0		1	0	1	1	0	0	3
	Reilly-Harrington, et al (28). 2010	Variable, average duration 13.7 min to complete		Requires computer software to score	NA	Variable, unknown	Cronbach's $\alpha = .82$	NA	Mania = 8 of 8	ICI-M YMRS w/ consensus Rating YMRS (ICC = .91). ICI-M YMRS had higher scores vs consensus YMRS rating ($t = 3.74, p < .001$)	NA	NA	
Computerized Adaptive Testing – Mania		1	1	0	0		0	0	1	0	0	0	3
	Achtyes, et al (29). 2015	Average 18	Included in question	Requires computer	No	25/18 = 1.4	0 (n.t.)	0 (n.t.)	DSM symptoms included in	0 (n.t.)	CAT-M scores higher for bipolar group	0 (n.t.)	

(CAT-M)		items	bank	er softwar e to score					question bank		(OR = 2.89 , p<0.002)		
<i>Clinician Observed</i>													
Manic State Rating Scale (MSRS)		0	0	1	1		0	0	1	0	0	0	3
	Blackburn , et al (30). 1977	28	No	Add item respon ses	Yes	16-28 = 0.6	All items (except depression item) were correlated with the total score at p < .05	o (n.t.)	Mania = 8 of 8	MSRS w/ global rating from clinical staff: nurses (r = .65, p<0.001) physicians (r = .80, p<0.001)	0 (n.t.)	Decrease over time for 11 patients at p<.01, and 2 patients at p < .05 Non- significant increase for 2 patients	
Bech- Rafaelsen Mania Rating Scale (BRMRS)		1	0	1	1		1	0	0.8	0	0	0.75	5.55
	Bech, et al (31). 1978	11	No	Add item respon ses	Yes	118/11 = 10.7 for internal consiste ncy	Inter-rater reliability ICCs and Spearman r ranged from .80 to .95	0 (n.t.)	Mania = 6 of 8	0 (n.t.)	0 (n.t.)	NA	
	Bech et al (32). 2001				Yes	80/11 = 7.2 for sensitivit y to change	Baseline (Cronbach's $\alpha = .80$) Day 1 (Cronbach's $\alpha =$.90)	0 (n.t.)	Mania = 6 of 8	0 (n.t.)	0 (n.t.)	52.2% response rate BRMRS more responsiv e than CGI-24 (McNema r test $\chi^2 =$ 12.04, p<.01)	
Bech- Rafaelsen Mania Rating Scale - Modified (BRMRS-M)		1	0	1	1		0	0	0.6	1	0	1	5.6
	Licht, et al (33). 1997	10	No	Add item respon ses	Yes	100/10 = 10	0 (n.t.)	0 (n.t.)	Mania = 5 of 8; BRMRS-M w/ BRMRS (r_s correlation >0.93)	BRMRS-M with CGI total: Baseline ($r_s =$.65) Post-TX ($r_s =$.89) p-values not	0 (n.t.)	60.7% of patients had 50% BRMRS- M reduction vs. 50%	

									p-value not reported	reported		on BRMRS	
Young Mania Rating Scale (YMRS)		1	0	1	1		0	0	1	0	0	0	4
	Young, et al (34). 1978	11	No	Add item responses	Yes	20/11 = 1.8	YMRS individual items w/ YMRS total score (range r_s : .41 - .85, $p < .05$) Inter-rater YRMS total score correlation (r_s = .93, $p < .001$) Inter-rater YRMS individual items correlation (range r_s : .66 - .95, $p < .001$)	0 (n.t.)	Mania = 8 of 8	YMRS w/ clinician global rating (r_s = .88, $p < .001$) YMRS w/ Petterson scale (r_s = .89, $p < .001$) YMRS w/ Beigel scale (r_s = .71, $p < .001$)	YMRS w/ days till discharge (r_s = .66, $p < .001$)	Δ YMRS w/ Δ clinician global rating (r_s = .76, $p < .05$) Difference in pre-post YMRS scores (Mann-Whitney U test, $p < .005$)	
Clinician-Administered Rating Scale for Mania (CARSM) Subscales - Mania - Psychosis		1	0	1	1		0	0	1	0	0	0	4
	Altman, et al (35). 1994	15	No	Add item responses	Yes	14/14 = 1	Mania scale (Cronbach's α = .88) Psychosis scale (Cronbach's α = .63) Inter-rater reliability (ICC = .93)	Bipolar group: -Mania scale (r_P = .78, $p < .01$) -Psychosis scale (r_P = .95, $p < .01$) Non-bipolar group: -Mania scale (r_P = .88, $p < .01$) -Psychosis scale (r_P = .94, $p < .01$) Timeframe = approximately 2 days	Mania = 8 of 8	CARSM w/ MRS (r_P = .94) p-value not reported	CARSM scales associated with diagnostic groups -Baseline (F = 53.5, $p < .01$) -Post-TX (F = 8.3, $p < .001$)	Mania scale: Bipolar group had greater decrease than other groups: diagnosis X time interaction (F = 22.0, $p < .001$)	
Observer-Rated Scale for Mania		0	1	1	1		0.25	0	1	0.25	0.25	0	4.75
	Krüger, et	49	Yes	Add	Yes	113/49 =	Cronbach's α = .89		Mania = 8	OSRM w/	ORSM w/	0 (n.t.)	

(ORSM)	al (36). 2010			item respon ses		2.3		$r_P = 0.87$ Timeframe = 3 weeks	of 8	YMRS: -T1 ($r_P = .75$, $p < .01$) - T2 ($r_P = .76$, $p < .01$) OSRM w/ SRMI: -T1 ($r_P = .65$, $p = .03$) -T2 ($r_P = .62$, $p < .03$) OSRM w/ BPRS: Not correlated	DSM-IV diagnosis: - T1($r_P = .74$, $p < .01$) - T2 ($r_P = .70$, $p < .01$) ORSM w/ manic vs. non- manic state -T1 ($t = 10.8$, $p < .01$) -T2 $t = 8.6$, $p < .01$)		
Measures Assessing Depressive Symptoms													
<i>Patient Reported</i>													
IDS-SR		0	1	1	1		0	0	1	0	0	0	4
	Rush et al (37). 2000	No	Yes	Add item respon ses	Yes	141/30= 4.5	0 (n.t.)	0 (n.t.)	Depression =9 of 9	0 (n.t.)	0 (n.t.)	IDS-SR appeared lower for manic state and euthymic state than depressed state	IDS-SR appeared to have the same sensitivity as IDS-C
Carrol Depression Scale (CDS)		0	1	1	0		0	0	0.8	0	0	0	2.8
	Cassidy, et al (38). 2009	52	Yes	Add item respon ses	No, comme rcially availabl e	94/52 = 1.8	0 (n.t.)	0 (n.t.)	Depression = 7 of 9	CDS w/ HDRS ($r_s = .677$, $p < .001$)	CDS higher in mixed subtype vs. pure mania (Mann- Whitney U test = 1748, $p < .001$)	0 (n.t.)	
		1	1	1	1		0.25	0	1	0.75	0.75	0	6.75
QIDS-SR	Bernstein et al (39). 2010	Yes	Yes	Add item respon se	Yes	141/16= 8.8 for concurr ent and	Cronbach's $\alpha = .84$ for depressed state patients Cronbach's $\alpha = .72$ for	0 (n.t.)	Depression =9 of 9	QIDS-SR w/QIDS-C ($r_s = .92$)	QIDS-SR scores lower for manic state than	0 (n.t.) QIDS-SR scores in	

						discriminant validity 52/16=3.3 for internal consistency	euthymic state patients					depressed state ($p < .01$)	remission range for those in euthymic state at follow-up	
<i>Clinician Observed</i>														
Inventory of Depressive Symptoms (IDS-C)		0	1	1	1		1	0	1	0	1	0	6	
	Trivedi, et al (40). 2004	30	Yes	Add item responses	Yes	402/30 = 13.4	Cronbach's $\alpha = .89$	0 (n.t.)	Depression = 9 of 9	0 (n.t.)	Higher quintiles of IDS-C score correlated with lower functioning on SF-12 ($p < .05$)	0 (n.t.)		
Quick Inventory of Depressive Symptoms (QIDS-C)		1	1	1	1		1	0	1	1	1	1	9	
	Trivedi, et al (40). 2004	16	Yes	Add item responses	Yes	402/16 = 25.1	Cronbach's $\alpha = .81$	NA	Depression = 9 of 9	QIDS-C w/ IDS-C ($r = .81$)	Higher quintiles of QIDS-C scores correlated with lower functioning on SF-12 ($p < .05$)	QIDS-C more sensitive to change than IDS-C ($p < .05$) Agreement between QDIS-C and IDS-C on remission ($\kappa = .75$) and response ($\kappa = .66$)		
	Bernstein, et al (41). 2009	16	Yes		Yes		Bipolar group: -Baseline (Cronbach's $\alpha = .80$) -Exit (Cronbach's $\alpha = .83$) Bipolar depression sub-group: -Baseline (Cronbach's $\alpha = .81$)	NA	Depression = 9 of 9	NA	Variation in QIDS-C scores across BD subtypes ($F = 9.45$), Bipolar depression sub-group had highest means, and Manic	Decrease QIDS-C scores with TX in bipolar group ($t = 6.88$, $p < 0.01$)		

							-Exit (Cronbach's $\alpha = .82$)				subgroup had lowest		
Bipolar Depression Rating Scale (BDRS)		0	1	1	1		0.75	0	1	0.75	0	0	5.5
	Berk, et al (42). 2007	24	Yes	Add item responses	Yes	112/24 = 5.1	Cronbach's $\alpha = .92$	0 (n.t.)	Depression = 9 of 9	BDRS total score w/ HAM-D ($r_P = .74$, $p < .01$) BDRS total score w/ MADRS ($r_P = .91$, $p < .01$) BDRS somatic depression subscale w/ HAM-D ($r_P = .67$, $p < .01$) BDRS somatic depression subscale w/ MADRS ($r_P = .86$, $p < .01$) BDRS psychological depression subscale w/ HAM-D ($r_P = .72$, $p < .01$) BDRS psychological depression subscale w/ MADRS ($r_P = .88$, $p < .01$) BDRS mixed subscale with YMRS ($r_P = .76$, $p < .01$)	0 (n.t.)	0 (n.t.)	
Subscales - Somatic depression - Psychological depression - Mixed		1	0	1	1		0.5	0	1	0	0.5	0	6
	Kolodziej, et al (43). 2008.	11, 13	No	Add item response	Yes	105/27 = 3.9	HAMD-13 (Cronbach's $\alpha = .83$)	0 (n.t.)	Depression = 9 of 9	0 (n.t.)	HAMD-11 / w Suicide Ideation (F=7.78,	0 (n.t.)	

11)				ses			HAMD-11 (Cronbach's $\alpha = .83$)				p<.01)		
Hamilton Depression Rating Scale (HAMD-5)		1	1	0	1		1	1	0.3	1	1	1	8.3
	Gonzalez-Pinto, et al (44). 2009	5	Yes	Not reported	Yes	173/5 = 34.6	Cronbach's $\alpha = .71$	One week test-retest ($r_P = .94$, $p < 0.001$)	Depression = 3 of 9	HAMD-5 w/ HAMD-21 ($r_P = .78$, $p < .001$)	HAMD-5 associated with DSMIV diagnosis of mixed vs. pure mania (AUC = .92)	HAMD-5 predicts CGI-BP defined remission (AUC = .98).	
Measures Assessing Depressive and Manic Symptoms													
<i>Patient Reported</i>													
Internal State Scale (ISS)		1	0	0	1		0.75	0.375	0.6	1	1	1	6.73
	Bauer, et al (45). 1991	17	No	Subgroup scoring	Yes	89/17 = 5.2 for internal consistency and test-retest reliability	DI (Cronbach's $\alpha = .92$) WB (Cronbach's $\alpha = .87$) ACT (Cronbach's $\alpha = .84$)	Two week test-retest correlation not significant ($p > .20$) for control group only	Mania = 5 of 8; Depression = 5 of 9	ISS-ACT w/ YMRS ($r_P = .60$, $p < .0001$) ISS-DI w/ HDRS ($r_P = .84$, $p < .0004$) ISS-WB w/ HDRS ($r_P = .73$, $p < .0001$)	ISS-ACT higher in manic vs. depressed and control (F = 22.1, $p < .0001$) ISS-DI higher in depressed vs. manic and control (F = 48.0, $p < .0001$) ISS-WB lower in depressed than manic and control (F = 66.4, $p < .0001$) ISS-PC higher in depressed and manic vs. control (F = 8.2, $p < .001$)	NA	
Subscales													
DI – Depression Index													
WB – Well Being													
ACT – Activation													
PC – Perceived Conflict													
	Cooke, et al (26). 1996	15	No	Subgroup scoring	Yes		0 (n.t.)	0 (n.t.)	0 (n.t.)	ISS (ACT + WB) w/ YMRS ($r = .44$, $p = .025$)	0 (n.t.)	Δ ISS w/ Δ SMRI at 2 visits in	

											6 month period ($r_p = .61, p = .002$)		
	Bauer, et al (46). 2000	15			Yes		0 (n.t.)	0 (n.t.)	Mania = 5 of 8; Depression = 5 of 9	0 (n.t.)	ISS-ACT higher in manic/hypomanic and mixed mood states vs. euthymic mood state ($F = 8.13, <.0001$) ISS-WB lower in depressed and mixed mood states vs. euthymic or manic/hypomanic mood states ($F = 25.33, p<.0001$) ISS-DI lower in euthymic mood state versus other mood states ($F = 4.01, p<.0001$) ISS-PC lower in euthymic mood states versus other mood states ($F = 9.13, p<.0001$)	0 (n.t.)	
ChronoRecord		1	0	0	1		0	0	0.2	1	0	0	3.2
	Bauer, et al (47). 2004	6	No	Need to interpret Free text	Yes	107/6 = 17.8	0 (n.t.)	0 (n.t.)	Mania = 1 of 8; Depression = 3 of 9	ChronoRecord w/ HAMD ($r_p = -.68, p<.0001$) ChronoRecord w/ BDI ($r_p = -$	0 (n.t.)	0 (n.t.)	

										.67, $p < .001$)			
	Bauer, et al (48). 2008	6	No	Free text	Yes		0 (n.t.)	0 (n.t.)	Mania = 1 of 8; Depression = 3 of 9	ChronoRecord w/ YMRS ($r_P = .40$, $p < .001$)	0 (n.t.)	0 (n.t.)	
Affective Self Rating Scale (ASRS)		1	1	1	1		1	0	0.9	0.25	0	0	6.15
Subscales - Depression (ASRS-D) - Mania (ASRS-M)	Adler, et al (49). 2008	18	Yes	Add item responses	Yes	53/18 = 2.9 For concurrent validity 284/18 = 15.8 For internal consistency	ASRS-D (Cronbach's $\alpha = .89$) ASRS-M (Cronbach's $\alpha = .91$)	0 (n.t.)	Mania = 7 of 8; Depression = 8 of 9	ASRS-D w/ MADRS ($r = .74$, $p < .001$) ASRS-D w/ CGI-BP-D ($r = .68$, $p < .001$) ASRS-M w/ HIGH-C ($r = .80$, $p < .001$) ASRS-M w/ CGI-BP-M ($r = .73$, $p < .001$)	0 (n.t.)	0 (n.t.)	
	Adler, et al (50). 2011	18	Yes		Yes		ASRS-M (H scalability test = .56) ASRS-D (H scalability test = .65)	0 (n.t.)	Mania = 7 of 8; Depression = 8 of 9	0 (n.t.)	0 (n.t.)	0 (n.t.)	
Multidimensional Assessment of Thymic States (MATHyS)		0	0	0	1		1	0	0.5	0.25	0	0.75	3.5
	Henry, et al (51). 2008	20	No	Add item responses for subscales, reversed questions	Yes	293/20 = 14.7 for internal consistency and interrater, concurrent validity	Cronbach's $\alpha = .95$	0 (n.t.)	Mania = 4 of 8; Depression = 4 of 9	MATHyS w/ MADRS-DEP ($r_P = -.45$) MATHyS w/ MAS Manic Score ($r_P = .56$) No p-values reported	0 (n.t.)	0 (n.t.)	

	Henry, et al (52). 2013	20	No		Yes	141/20 = 7.7 for sensitivity to change	Cronbach's $\alpha = .93$	NA	Mania = 4 of 8; Depression = 4 of 9	MAThYS w/ YMRS ($r_P = .72, p < .05$) MAThYS w/ HAMD-17 ($r_P = -.43, p < .05$)	NA	Improvement over time (effect size = $-.30$ at 6 and 24 weeks)	
NIMH Prospective Life-Chart Methodology – Self (LCS) Subscales - Depression LCS-D - Mania LCS-M		1	0	1	1		0	0	0.2	1	0	0	4.2
	Born, et al (53). 2014	2	No	Item responses are compared to past responses	Yes	162/2 = 81	0 (n.t.)	0 (n.t.)	Mania = 1 of 8; Depression = 3 of 9	LCS Total w/ CGI-BP IC ($r_P = .65, p < .001$) LCS-D w/ IDS-C ($r_P = -.72, p < .001$) LCS-D w/ CGI-BP IB ($r_P = .72, p < .001$) LCS-M w/ YMRS ($r_P = .49, p < .001$) LCS-M w/ CGI-BP IA ($r_P = .49, p < .001$)	0 (n.t.)	0 (n.t.)	
Subscales - Mood LCS-Mood - Functioning LCS-Func	Schärer, et al (54). 2015				Yes		0 (n.t.)	0 (n.t.)	Mania = 1 of 8; Depression = 3 of 9	LCS-Mood w/ IDS-C ($r_S = .60$) LCS-Mood w/ YMRS ($r_S = .39$) LCS-Func w/ IDS-C function ($r_S = .72$) LCS-Func w/ YMRS ($r_S = .61$)	0 (n.t.)	0 (n.t.)	
Daily Mood Monitoring (DMM)		1	0	0	0		0	0	0.4	0	0	0	1.4
Subscales	Schwartz, et al (55). 2016	6	No	Requires software to	No	10/6 = 1.7	0 (n.t.)	0 (n.t.)	Mania = 4 of 8; Depression = 3 of 9	0 (n.t.)	DMM-Mood lower in Bipolar group versus control	0 (n.t.)	

- Mood DMM-Mood - Energy DMM-E - Thoughts DMM-T - Impulsivity DMM-I - Social Stress DMM-SS				score							(p = .043) DMM-E lower in Bipolar group versus control (p = .007) DMM-T, DMM-I and DMM-SS not significantly different in Bipolar group versus control		
<i>Clinician Observed</i>													
NIMH Prospective Life-Chart Methodology – Clinician (LCC) Subscales - Depression LCC-D - Mania LCC-M		1	0	1	1		1	0	0.6	1	0	1	6.6
Denicoff, et al (56). 1997	2	No	Item responses are compared to past responses	Yes	30/2 = 15 for internal consistency 300/2 = 150 for concurrent validity 270/2 = 135 for convergent validity	Inter-rater reliability all days ($\kappa > 0.8$)	0 (n.t.)	Mania = 2 of 8; Depression = 9 of 9	LCC total w/ Global Assessment Scale ($r_P = -.81$, $p < .001$) LCC-D w/ HAM-D ($r_P = .86$, $p < .001$) LCC-D w/ BDI ($r_P = .73$), LCC-M w/ YMRS ($r_P = .61$, $p < .001$)	0 (n.t.)	0 (n.t.)		
Denicoff, et al (57). 2000				Yes		0 (n.t.)	0 (n.t.)	Mania = 2 of 8; Depression = 9 of 9	LCC total w/ GAF ($r_P = -.73$, $p < .001$) LCC-D w/ IDS-C ($r_P = -.79$, $p < .001$) LCC-M w/ YMRS ($r_P = .67$, $p < .001$)	0 (n.t.)	Δ LCC-D w/ Δ IDS-C at visits 1-6 (r_P ranged .59 -.80) Δ LCC-M w/ Δ YMRS at visits 1-6 (strong, but not		

												reported) ΔLCC total w/ ΔGAF -C at visits 1- 6 (strong, but not reported)	
		1	1	1	1		0	0	0.9	0.5	0	0	5.4
Clinical Monitoring Form (CMF)	Sachs, et al (58). 2002	18	Yes	Compare to past results	Yes according to article, but website provided is inactive	58/18 = 3.2	0 (n.t.)	0 (n.t.)	Mania = 7 of 8; Depression = 9 of 9	CMF-D w/ HRSD (r = .79) CMF-D w/ MADRS (r = .87) CMF w/ CGI (r = .68) CMF-ME w/ YMRS (r = .84) CMF-ME w/ MRS (r = .84) CMF-ME w/ CGI (r = .42) p-values not reported	0 (n.t.)	0 (n.t.)	
Subscales - Depression CMF-D - Mood Elevation CMF-ME													
Brief Bipolar Disorder Symptom Scale (BDSS)	Dennehy, et al (59). 2004	10	No	Add item responses	Unclear, copies available online but not from official source	409/10 = 41	Cronbach's α = .63	0 (n.t.)	Mania = 4 of 8; Depression = 5 of 9	BDSS w/ BPRS24 (r _P = .91, p<.001) BDSS w/ CARS total (r _P = .24, p<.001) BDSS w/ CARS	0 (n.t.)	1	5.5
												Agreement of BDSS w/ BPRS24 classification of response (κ = .78) and remission	

										mania subscale ($r_p = .25$, $p < .001$)		($\kappa = .84$)	
										BDSS w/ CARS psychosis ($r_p =$.13, $p < .001$)		BDSS more sensitive to change than BPRS24	
										BDSS w/ IDS-C ($r_p = .21$, $p < .001$)			
Bipolar Inventory of Symptoms Scale (BISS)		0	1	1	1		0.75	0.75	1	0.75	0.75	0	7
Subscales - Depression BISS-D - Mania BISS- M	Bowden, et al (60). 2007	44	Yes	Add item respon ses	Yes	244/44 = 5.5 for internal consiste ncy, concurr ent validity 224/44 = 5.1 for test- retest 340/44 = 7.7 for converg ent validity	BISS total (Cronbach's $\alpha = .90$) BISS-D (Cronbach's α $= .93$) BISS-M (Cronbach's α $= .92$) Inter-rater reliability on items ICC>.61	0 (n.t.)	Mania = 8 of 8; Depression = 9 of 9	BISS total w/ GAF ($r_p = -.52$) BISS-M w/ GAF ($r_p = -.52, -.48$) BISS-D not correlated with CGI-BD or GAF	BISS total higher in depressed, mixed, or manic groups versus recovered (p $\leq .05$) BISS-D higher for depressed group versus manic and recovered groups (p \leq .05) BISS-D higher for mixed groups versus manic and recovered groups (p \leq .05) BISS-M higher for manic group versus depressed and recovered groups (p \leq .05) BISS-M higher for mixed group versus depressed	0 (n.t.)	

										and recovered group (p <= .05)		
	Gonzalez, et al (61). 2008				Yes	BISS total (Cronbach's $\alpha = .93$) BISS-D (Cronbach's $\alpha = .92$) BISS-M (Cronbach's $\alpha = .90$)	Three day test=retest reliability BISS total (ICC =.96) BISS-D (ICC =.98) BISS-M (ICC =.95)	Mania = 8 of 8; Depression = 9 of 9	BISS total w/ MADRS ($r_p = .81$, p<.0001) BISS total w/ YMRS ($r_p = .74$, p<.0001) BISS total w/ GAF ($r_p = -.76$, p<.0001) BISS-D w/ MADRS ($r_p = .94$, p<.0001) BISS-D w/ GAF ($r_p = -.68$, p<.0001) BISS-M w/ YMRS ($r_p = .91$, p<.0001) BISS-M w/ GAF ($r_p = -.56$, p<.0001)	BISS total associated with diagnostic groups and healthy controls (F = 139.12, p<.001) BISS-D associated with diagnostic groups and healthy controls (F = 125.57, p<.001) BISS-M associated with diagnostic groups and healthy controls (F = 64.89, p<.001)	0 (n.t.)	
	Singh, et al (62). 2013				Yes	0 (n.t.)	0 (n.t.)	Mania = 8 of 8; Depression = 9 of 9	0 (n.t.)	BISS total higher in depressed, mixed, and manic groups versus recovered (F test, p <= .003) BISS-D higher in depressed and mixed groups versus manic and recovered groups (F test, p < .003)	0 (n.t.)	

												BISS-M higher in manic and mixed groups versus depressed and recovered groups (F test. p < .003)		

Note: α = Cronbach's alpha

ACT = Activation

AMRS = Altman Mania Rating Scale

ASRS-D/-M = Affective Self-Rating Scale-Depression / Mania

AUC = area under the curve

BD = bipolar disorder

BDI = Beck Depression Inventory

BDRS = Bipolar Depression Rating Scale

BDSS = Brief Bipolar Disorder Symptom Scale

BISS-D/-M = Bipolar Inventory of Symptoms Scale Depression / Mania

BRMRS = Bech-Rafaelsen Mania Rating Scale

BRMRS-M = Bech-Rafaelsen Mania Rating Scale - Modified

BPRS = Brief Psychiatric Rating Scale

CARS-M = Clinician-Administered Rating Scale for Mania

CAT-M = Computerized Adaptive Testing - Mania

CDS = Carrol Depression Scale

CGI-24/BP-D = Clinical Global Impression Scale - 24 / Bipolar Depression

CMF-D/-ME = Clinical Monitoring Form Depression / Mood Elevation

Δ - Change score

DI = Depression Index

DMM-M/-E/-T/-I/-SS = Daily Mood Monitoring - Mood / Energy / Thoughts / Impulsivity / Social Stress

DSM = Diagnostic and Statistical Manual

F = F-value from F-test

GAF = Global Assessment of Functioning

HDRS / HAM-D = Hamilton Depression Rating Scale

HIGH-C = Hypomania Interview Guide - Clinical version

ICC = intraclass correlation coefficient

ICD = International Classification of Disease

ICI-M = Interactive Computer Interview for Mania
IDS-C = Inventory of Depressive Symptoms - Clinician rated
ISS = Internal State Scale
 κ = kappa
LCS-D/-M/-Func = NIMH Prospective Life-Chart Methodology - Self Depression / Mania / Functioning
MADRS = Montgomery Asberg Depression Rating Scale
MATHyS = Multidimensional Assessment of Thymic States
MSRS = Manic State Rating Scale
n.t. = Not tested
n.s. = Not significant
OR = odds ratio
OSRM = Observer-Rated Scale for Mania
PC = Perceived Conflict; QIDS-C = Quick Inventory of Depressive Symptoms - Clinician rated
 r = correlation coefficient (type unspecified)
 r_p = Pearson's correlation coefficient
 r_s = Spearman's rho
SF - 12 = Short-Form 12
SRMI = Self-Report Manic Inventory
 t = t-value from t-test
TX = treatment
YMRS = Young Mania Rating Scale
WB = Well Being