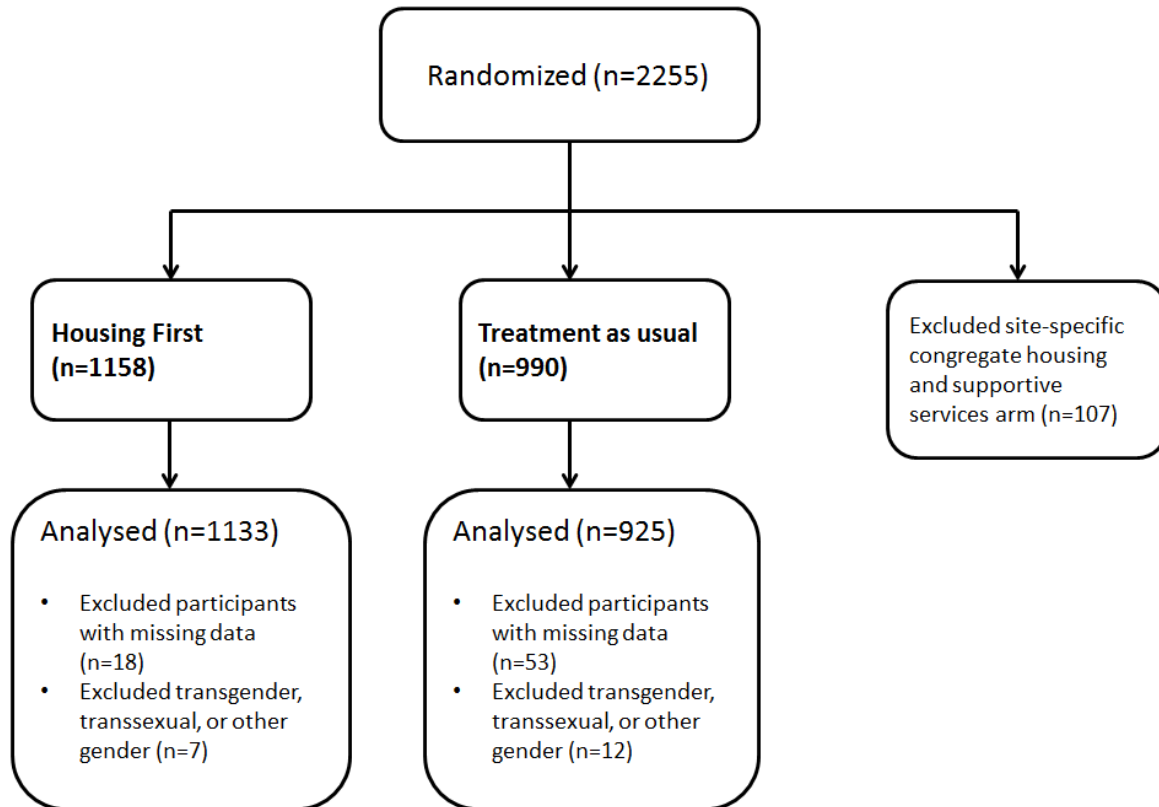


eFigure 1: Flow diagram of participants included for analysis



eTable 1: Comparison of characteristics in the analyzed vs original sample

Variable	Analyzed sample N=2058		Original sample N=2255	
	N	%	N	%
Treatment group				
<i>Treatment as usual</i>	925	44.9	990	43.9
<i>Housing First</i>	1133	55.1	1265	56.1
Age (years)	40.9	-	40.9	-
Gender (female)	663	32.2	710	31.5
Ethnicity				
<i>Indigenous or other minority</i>	1046	50.8	1140	50.6
Education (%)				
<i>Completed high school or higher education</i>	904	43.9	988	43.8
Income (\$/prior month)	680.6	-	688.9	-
Alcohol abuse or dependence	920	44.7	992	44.0
Drug abuse or dependence	1089	52.9	1199	53.2
Past psychiatric hospitalization	780	38.8	895	39.7
Past criminal involvement	724	35.4	820	36.4
Total time homeless (years)	58.2	-	58.2	-
Childhood trauma (ACE score)	4.5	-	4.4	-
Suicide risk				
<i>Moderate/high</i>	745	36.2	814	36.1
Baseline psychiatric diagnosis				
<i>Severe</i>	959	46.9	1096	48.6
Inadequate access to health care	950	46.7	1037	46.0
Level of functioning (MCAS score)	60.2	-	59.6	-
Family social support (QOLI-20 Family score)	13.8	-	13.8	-
Number of comorbidities	4.8	-	4.7	-
Site				
<i>Moncton</i>	195	9.5	201	8.9
<i>Montreal</i>	463	22.5	469	20.8
<i>Toronto</i>	530	25.8	575	25.5
<i>Vancouver</i>	378	18.4	513	22.7
<i>Winnipeg</i>	492	23.9	497	22.0

eTable 2: Model selection indicators

	Quadratic, 4-class	Cubic, 4-class
BIC	201746.052	200372.764
Entropy	0.992	0.997

Note: Linear, quadratic, cubic, and piecewise models with 2-6 classes were investigated. However, due to unrealistic estimates or problems with convergence with the other attempted models, this table only lists the final two models used for consideration.