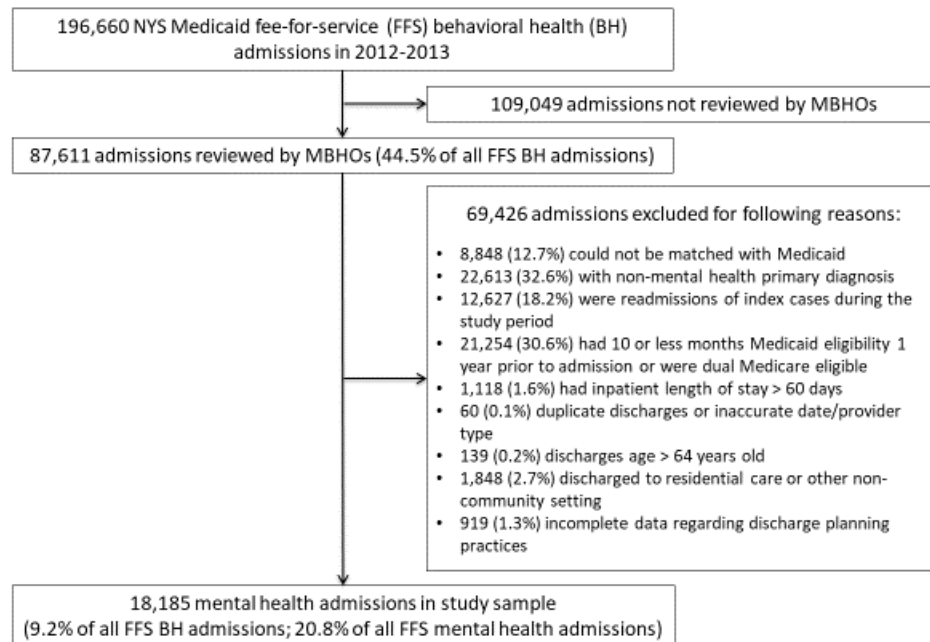


Supplemental data

Consort diagram depicting creation of study sample.



Inpatient staff scheduled outpatient appointments for 79.8% of discharges (14,503 out of 18,185 cases with complete information), forwarded a discharge summary to an outpatient provider within 1 day of discharge for 72.8% (13,735 out of 18,867 cases), and communicated with outpatient clinicians for 64.9% (12,099 out of 18,653 cases). All three discharge planning practices were completed for 46.3% (8,185 out of 17,668 cases). The findings reveal significant gaps in psychiatric inpatient discharge planning. Approximately 20% to 35% of discharged patients did not receive at least one of these recommended practices and over 50% failed to receive all 3 practices.

The models reported below identify patients at risk of not receiving all three discharge planning practices.

Supplemental Table 1 shows percentages of patients not receiving complete discharge planning stratified by patient characteristics. In the adjusted logistic regression model, patient characteristics associated with not receiving complete discharge planning included having short (≤ 4 days) or long (31-60 days) inpatient lengths of stay, with a similar tendency for intermediate length of stay (15-30 days, $p=.04$). Patients with a primary diagnosis of bipolar disorder were less likely to receive complete discharge planning with a similar tendency for patients with depressive disorders ($p=.02$). Other significant variables included homelessness, co-occurring substance use, high medical co-morbidity (Elixhauser score 4 or greater), and lack of participation in outpatient care in the 12 months prior to admission.

Supplemental Table 2 reports associations between not receiving complete discharge planning and hospital and service system characteristics. In the adjusted logistic regression model, patients treated in medium or large hospitals were more likely to not receive complete discharge planning. Other hospital and service system variables that tended to associate with not receiving complete discharge planning included being treated in hospitals with a higher percentages of psychiatric discharges having Medicaid ($p=.03$), hospitals

that did not provide outpatient psychiatric services ($p=.02$), or teaching hospitals ($p=.04$). Patients reviewed by the MBHOs in New York City area also tended to be more likely to not receive complete discharge planning (Hudson River, $p=.03$; New York City, $p=.04$; Long Island, $p=.04$).

previous 12 months (non-behavioral health)								
0	5809	3040	52.3	ref		ref		
1-3	8408	4498	53.5	1.05	(.91 - 1.2)	1.06	(.96 - 1.17)	.10
4 or higher	3274	1837	56.1	1.16	(.96 - 1.42)	1.15	(1 - 1.31)	.009
Prior engagement in psychiatric outpatient services								
Active (past month)	8,855	4,143	46.8	ref		ref		
Recent (past 12 months, but not past month)	3,727	1,957	52.5	1.26	(1.00 - 1.58)	1.19	(.94 - 1.49)	.06
None (none in past 12 months)	5,086	3,383	66.5	2.26	(1.87 - 2.73)	2.26	(1.91 - 2.68)	<.001

Western	2,545	1,051	41.3	ref		ref		
Central	2,534	1,076	42.5	1.05	(.46 - 2.39)	.84	(.36 - 1.97)	.60
Hudson River	4,594	2,703	58.8	2.03	(1.16 - 3.56)	2.13	(.88 - 5.15)	.03
NYC	6,736	3,980	59.1	2.05	(1.12 - 3.77)	1.94	(.86 - 4.38)	.04
Long Island	1,259	673	53.5	1.63	(.92 - 2.88)	1.91	(.87 - 4.22)	.04
County population in poverty								
Low: less than 15%	5549	2975	53.61	ref		ref		
Medium: 15-19%	6715	3532	52.60	0.96	(0.69 - 1.33)	1.22	(0.9 - 1.66)	0.0923
High: 20% or higher	5241	2871	54.78	1.05	(0.75 - 1.47)	0.87	(0.58 - 1.31)	0.3805
Mental health workers per 100k residents								
Low: less than 67 (Q1)	1385	650	46.93	ref		ref		
Medium: 67 to 166	10045	5347	53.23	1.29	(0.86 - 1.92)	0.95	(0.6 - 1.52)	0.7955
High: 167 or more (Q3)	6075	3381	55.65	1.42	(0.95 - 2.13)	0.76	(0.47 - 1.22)	0.1306
Urban/rural classification								
Medium metro	2,128	1,111	52.2	ref		ref		
Large central metro	9,622	5,308	55.2	1.13	(.68 - 1.85)	.61	(.32 - 1.17)	.05
Large fringe metro	2,862	1,615	56.4	1.19	(.73 - 1.92)	.89	(.54 - 1.48)	.55
Small metro	1,051	556	52.9	1.03	(.53 - 2.01)	.94	(.57 - 1.54)	.74
Micropolitan	1,432	592	41.34	.65	(.34 - 1.22)	.85	(.51 - 1.44)	.43
Noncore	410	196	47.8	.84	(.46 - 1.54)	.78	(.42 - 1.43)	.29