

Table e1

Depression Diagnostic Codes for Study Eligibility

Diagnostic Code	Description
293.83	Depressive Disorder Due To Another Medical Condition With Depressive Features
293.83	Depressive Disorder Due To Another Medical Condition With Major Depressive-Like Episode
293.83	Depressive Disorder Due To Another Medical Condition With Mixed Features
296.2	Major Depressive Disorder Single Episode Unspecified
296.2	Major Depressive Disorder Single Episode Unspecified Degree
296.21	Major Depressive Disorder Single Episode Mild
296.21	Major Depressive Disorder Single Episode Mild Degree
296.22	Major Depressive Disorder Single Episode Moderate
296.22	Major Depressive Disorder Single Episode Moderate Degree
296.23	Major Depressive Disorder Single Episode Severe
296.23	Major Depressive Disorder Single Episode Severe Degree Without Mention Of Psychotic Behavior
296.23	Major Depressive Disorder Single Episode Severe Without Psychotic Features
296.2	Major Depressive Disorder Single Episode Severe Degree Specified As With Psychotic Behavior
296.24	Major Depressive Disorder Single Episode Severe With Psychotic Features
296.24	Major Depressive Disorder Single Episode With Psychotic Features
296.2	Major Depressive Disorder Single Episode In Partial Or Unspecified Remission
296.25	Major Depressive Disorder Single Episode In Partial Remission
296.26	Major Depressive Disorder Single Episode In Full Remission
296.3	Major Depressive Disorder Recurrent Episode Unspecified
296.3	Major Depressive Disorder Recurrent Episode Unspecified Degree
296.3	Major Depressive Disorder Recurrent Unspecified
296.31	Major Depressive Disorder Recurrent Episode Mild
296.31	Major Depressive Disorder Recurrent Episode Mild Degree
296.31	Major Depressive Disorder Recurrent Mild
296.32	Major Depressive Disorder Recurrent Episode Moderate
296.32	Major Depressive Disorder Recurrent Episode Moderate Degree
296.32	Major Depressive Disorder Recurrent Moderate
296.33	Major Depressive Disorder Recurrent Episode Severe
296.33	Major Depressive Disorder Recurrent Episode Severe Degree Without Mention Of Psychotic Behavior
296.33	Major Depressive Disorder Recurrent Severe Without Psychotic Features
296.34	Major Depressive Disorder Recurrent Episode Severe Degree Specified As With Psychotic Behavior
296.34	Major Depressive Disorder Recurrent Episode With Psychotic Features
296.3	Major Depressive Disorder Recurrent Severe With Psychotic Features Specify: Mood-Congruent
296.35	Major Depressive Disorder Recurrent Episode In Partial Or Unspecified Remission
296.35	Major Depressive Disorder Recurrent Episode In Partial Remission
296.35	Major Depressive Disorder Recurrent In Partial Remission
296.36	Major Depressive Disorder Recurrent Episode In Full Remission
296.36	Major Depressive Disorder Recurrent In Full Remission
296.8	Atypical Depressive Disorder
296.9	Unspecified Episodic Mood Disorder
300.4	Dysthymic Disorder Early Onset With Atypical Features
300.4	Dysthymic Disorder Early Onset Without Atypical Features
300.4	Dysthymic Disorder Late Onset With Atypical Features

300.4	Dysthymic Disorder Late Onset Without Atypical Features
300.4	Persistent Depressive Disorder (Dysthymia)
301.13	Cyclothymic Disorder
311	Depressive Disorder Nos
311	Depressive Disorder Not Elsewhere Classified
311	Other Specified Depressive Disorder
311	Unspecified Depressive Disorder
309	Adjustment Disorder With Depressed Mood
309.28	Adjustment Disorder With Mixed Anxiety And Depressed Mood

Note. Patient depression diagnoses were captured from the EHR for visits between July 1, 2015 and July

31, 2018.

Table e2

Tailored Guidelines

Site #	State	Tailored	Target Frequency	Age Range Specified in Guideline	Diagnoses Specified in Guideline
1	TN	yes	every session*	21-65	depression diagnoses
5	TN	yes	every session	12 and older	depression diagnoses
6	IN	no	every session	21-65	depression diagnoses
9	IN	yes	every session	12 and older	any diagnosis
10	IN	yes	every session	12 and older	any diagnosis
12	IN	yes	first week of the month	12 and older	depression diagnoses

* This site opted to focus on administration of the PHQ-9 to 10 clients per clinician caseload initially to aid therapists in gaining experience with measurement-based care before expanding efforts to all clients with a depression diagnosis.

Table e3*Level of Fidelity by Implementation Group*

Level of Fidelity	Standardized		Tailored		All Participants (<i>N</i> = 154)
	Child/Family (<i>n</i> = 27)	Adult (<i>n</i> = 44)	Child/Family (<i>n</i> = 20)	Adult (<i>n</i> = 63)	
No PHQ-9 on Record	77.4% (37.7, 41.0)	69.0% (88.1, 69.6)	85.8% (39.5, 49.7)	67.9% (71.1, 65.3)	72.2% (66.0, 63.8)
PHQ-9 Recorded	13.8% (12.0, 26.5)	17.3% (28.2, 49.2)	9.0% (7.2, 12.2)	9.8% (11.4, 25.9)	12.6% (15.7, 34.0)
PHQ-9 Discussed	8.7% (7.4, 16.1)	13.7% (20.8, 32.1)	5.2% (1.7, 2.7)	22.4% (31.0, 52.0)	15.3% (20.1, 39.4)

Note. Percentages (*M n*, *SD n*) for clinician-level of fidelity. Totals for each fidelity category were computed for each clinician in the implementation window, then clinician-level counts were summarized.

Table e4*Effect of Implementation Group on Patient Depression Symptom Severity*

Variable	b (95% CI)			
	Treatment Model		New Patient Model	
Intercept	12.75	(11.11 - 14.40)	12.27	(10.32 - 14.23)
Baseline PHQ-9	0.61	(0.45 - 0.77)	0.61	(0.45 - 0.77)
New Patient	-0.68	(-2.45 - 1.09)	-0.02	(-2.42 - 2.39)
Tailored	1.49	(-0.54 - 3.51)	2.51	(-0.51 - 5.53)
New Patient x Tailored			-1.56	(-5.23 - 2.11)

Note: Clinician n=81; Patient n = 228

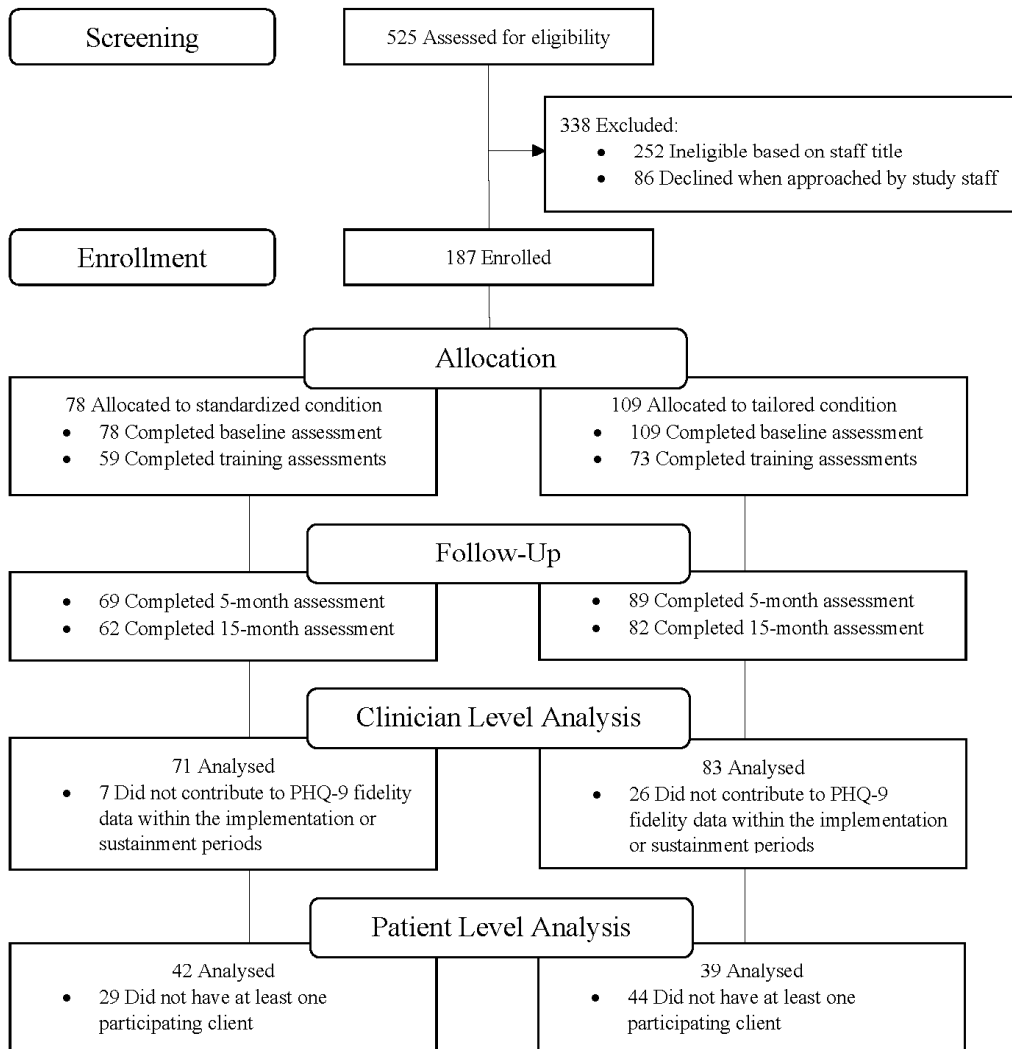
Table e5*Effect of MBC Fidelity on Patient Depression Symptom Severity*

Variable	b (95% CI)			
	Main Effects Model		New Patient Interaction Model	
Intercept	14.17	(12.25 - 16.08)	14.17	(12.06 - 16.27)
Baseline PHQ-9	0.60	(0.44 - 0.76)	0.60	(0.44 - 0.76)
New Patient	-1.14	(-2.98 - 0.70)	-1.19	(-4.04 - 1.65)
Number of Sessions	-0.05	(-0.45 - 0.35)	0.02	(-0.59 - 0.63)
Sessions Recorded PHQ-9	-0.05	(-0.75 - 0.64)	0.16	(-0.94 - 1.26)
Sessions Discussed PHQ-9	-0.24	(-0.78 - 0.29)	-0.47	(-1.26 - 0.32)
Number of Sessions x New Patient			-0.07	(-0.87 - 0.73)
Sessions Recorded PHQ-9 x New Patient			-0.47	(-1.93 - 0.99)
Sessions Discussed PHQ-9 x New Patient			0.57	(-0.60 - 1.73)

Note: Clinician n=81; Patient n = 228

Figure e1a

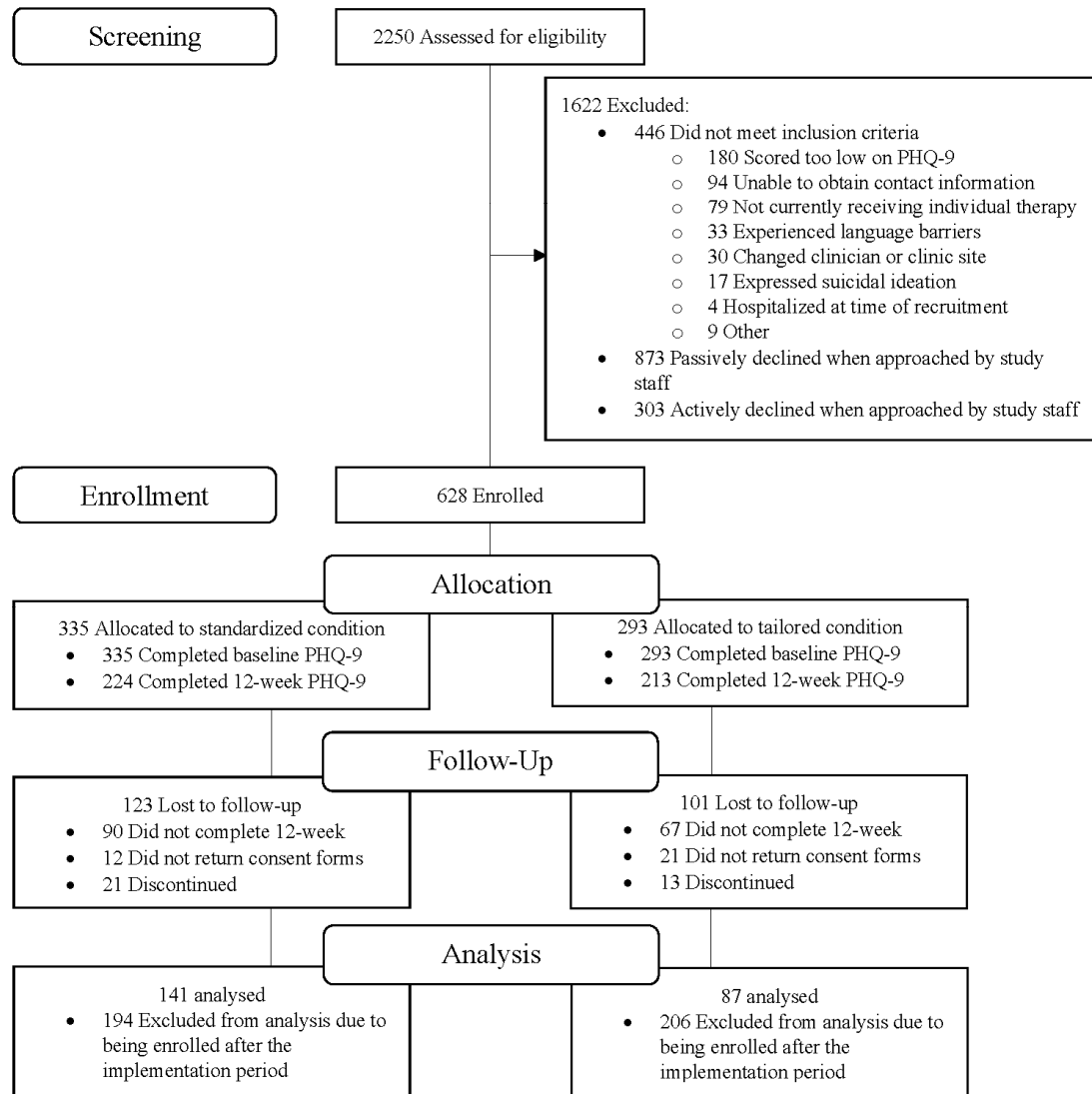
Clinician Consort Flowchart



Note. Ten clinicians practiced at more than one site during the study period. Only data collected at the first site at which a clinician provided consent was retained in the data.

Figure e1b

Patient Consort Flowchart



Note. Passively declined = patient did not answer the phone during recruitment attempts. Actively declined = patient refused participation in study. Expressing suicidal ideation in the phone interview was initially an exclusion criterion but was later removed, allowing suicidal patients to participate once they had been assessed by a Centerstone staff member for stability.