

Supplemental Table 1. Sociodemographic characteristics among adults 18 and older with major depressive episode from 2005 to 2019

Variable (% , SE)	Asian/PI/Native HI		Black/AA		Hispanic		More than one race		Native American/Alaska Native		White	
	2005	2019	2005	2019	2005	2019	2005	2019	2005	2019	2005	2019
Sex												
Female	51.5 (10.3)	71.8 (4.9)	74.3 (4.1)	69.4 (2.8)	64.8 (4.7)	62.7 (3.1)	51.9 (9.1)	66.6 (5.1)	81.0 (7.6)	59.4 (12.0)	66.2 (1.4)	61.3 (1.2)
Male	48.5 (10.3)	28.2 (4.9)	25.7 (4.1)	30.6 (2.8)	35.2 (4.7)	37.3 (3.1)	48.1 (9.1)	33.4 (5.1)	19.0 (7.6)	40.6 (12.0)	33.8 (1.4)	38.7 (1.2)
Age												
18-25	31.2 (8.4)	35.3 (5.1)	20.2 (2.4)	27.3 (2.7)	26.8 (3.3)	33.5 (2.5)	23.7 (4.5)	33.9 (4.7)	23.8 (7.0)	27.9 (7.8)	19.0 (1.0)	23.8 (0.9)
26-34	26.1 (10.0)	31.5 (6.1)	22.7 (4.3)	23.3 (2.5)	30.0 (4.1)	24.3 (2.9)	18.6 (6.0)	30.7 (5.6)	28.7 (9.3)	9.1 (3.7)	15.6 (1.1)	20.8 (0.9)
35-49	29.3 (11.7)	13.5 (3.5)	31.3 (4.3)	25.9 (2.8)	26.6 (5.1)	24.7 (2.6)	40.6 (8.8)	18.1 (4.1)	46.0 (10.2)	12.1 (5.6)	36.5 (1.5)	24.3 (1.1)
50-64	10.8 (4.2)	12.3 (6.4)	19.9 (5.2)	19.1 (3.1)	13.1 (3.7)	10.9 (2.2)	9.1 (6.3)	12.9 (4.9)	1.0 (1.0)	45.7 (12.5)	23.1 (1.8)	20.7 (1.0)
65 or older	2.6 (2.6)	7.3 (4.9)	5.9 (4.9)	4.4 (1.8)	3.6 (2.2)	6.5 (2.2)	8.1 (5.5)	4.5 (2.4)	0.6 (0.6)	5.1 (5.0)	5.8 (1.1)	10.3 (1.2)
Educational attainment												
High school but not college	14.0 (4.5)	8.6 (2.8)	34.8 (4.5)	24.4 (3.2)	28.8 (3.4)	22.7 (2.5)	32.7 (7.9)	25.0 (4.4)	25.5 (7.4)	43.1 (12.0)	33.4 (1.9)	21.7 (1.0)
Less than high school	8.2 (3.5)	4.6 (2.5)	11.3 (2.5)	13.7 (2.1)	32.7 (5.7)	14.5 (2.4)	15.8 (6.7)	13.8 (4.4)	26.0 (8.0)	8.8 (5.4)	12.9 (1.2)	7.0 (0.6)
Some college or college grad	77.7 (6.2)	86.8 (3.1)	53.9 (4.4)	61.8 (3.7)	38.5 (5.2)	62.8 (3.1)	51.5 (8.4)	61.3 (5.4)	48.6 (9.2)	48.0 (11.6)	53.7 (1.8)	71.3 (1.2)
Employment												
employed full-time	58.0 (10.0)	38.4 (5.5)	42.2 (4.8)	44.0 (3.7)	49.8 (4.9)	45.4 (2.7)	45.0 (9.4)	32.2 (4.4)	46.8 (12.0)	49.2 (11.8)	47.1 (1.8)	45.6 (1.5)
employed part-time	22.4 (8.4)	17.0 (3.5)	5.3 (1.0)	15.8 (2.6)	15.8 (3.2)	19.0 (2.3)	10.9 (3.6)	22.7 (3.8)	26.3 (10.7)	6.2 (3.0)	15.1 (1.0)	15.8 (1.1)
other	10.3 (4.6)	39.5 (6.8)	38.9 (5.3)	33.3 (3.6)	26.0 (4.9)	28.6 (3.3)	34.1 (8.4)	34.7 (5.2)	24.5 (8.9)	39.7 (11.3)	32.6 (1.7)	33.5 (1.1)
unemployed	9.4 (4.3)	5.2 (2.1)	13.6 (3.2)	6.9 (1.6)	8.4 (2.0)	7.1 (1.3)	9.9 (5.0)	10.4 (4.4)	2.4 (1.4)	4.9 (4.0)	5.1 (0.6)	5.0 (0.4)
Income												
\$0-19,999	16.2 (6.3)	16.4 (3.5)	38.3 (4.6)	39.5 (3.3)	36.4 (4.3)	18.5 (2.2)	38.9 (8.5)	32.5 (5.9)	44.6 (9.7)	42.9 (12.0)	26.8 (1.4)	19.9 (1.1)
\$20,000-49,999	51.7 (10.9)	24.9 (5.8)	45.8 (5.7)	28.0 (2.7)	43.0 (4.2)	36.2 (2.8)	36.1 (8.8)	31.4 (6.0)	26.9 (9.8)	23.8 (9.2)	33.7 (1.7)	30.2 (1.3)
\$50,000-74,999	9.7 (4.1)	20.2 (4.4)	9.1 (2.7)	12.1 (2.3)	11.3 (2.2)	18.7 (2.4)	3.2 (1.8)	10.4 (3.2)	23.3 (11.4)	25.0 (12.6)	18.3 (1.3)	15.7 (1.1)
\$75,000+	22.5 (11.4)	38.5 (5.9)	6.9 (1.9)	20.4 (2.7)	9.2 (2.4)	26.7 (2.9)	21.8 (8.7)	25.6 (4.3)	5.1 (4.0)	8.2 (5.3)	21.2 (1.7)	34.2 (1.1)
Insurance												
Public insurance	10.6 (4.5)	11.5 (3.1)	23.5 (3.8)	27.3 (3.0)	14.6 (4.3)	21.9 (2.1)	11.1 (4.7)	28.2 (6.1)	17.8 (8.6)	10.7 (3.7)	10.3 (0.9)	14.9 (0.9)
No insurance	21.1 (6.1)	9.6 (3.5)	17.9 (3.6)	11.4 (1.8)	33.4 (3.6)	15.1 (1.8)	22.2 (5.7)	12.2 (3.1)	24.5 (8.4)	8.5 (5.0)	16.9 (1.0)	10.0 (0.8)
Other	13.4 (7.7)	12.0 (5.0)	24.9 (5.7)	16.7 (3.3)	8.5 (2.5)	14.3 (3.3)	17.4 (7.5)	9.9 (3.0)	14.6 (5.0)	33.4 (11.1)	11.6 (1.2)	12.6 (0.9)
Private insurance	54.9 (9.9)	66.8 (6.6)	33.7 (4.1)	44.7 (2.8)	43.4 (4.4)	48.7 (2.8)	49.3 (9.2)	49.7 (5.9)	43.1 (11.7)	47.5 (12.4)	61.3 (1.4)	62.4 (1.3)

Note: Asian/Pacific Islander/Native Hawaiian (Asian/PI/Native HI), Black/African American (Black/AA), Native American/Alaska Native (Native Am/AK Native).

Supplemental Table 2. Sociodemographic characteristics among adults 18 and older with serious psychological distress from 2005 to 2019

Variable (% , SE)	Asian/PI/Native HI		Black/AA		Hispanic		More than one race		Native American/Alaska Native		White	
	2005	2019	2005	2019	2005	2019	2005	2019	2005	2019	2005	2019
Sex												
Female	47.3 (5.7)	62.0 (3.6)	70.7 (3.1)	63.1 (2.0)	59.5 (3.2)	57.5 (2.4)	61.8 (6.9)	61.3 (3.8)	79.2 (7.6)	60.0 (9.7)	65.0 (1.3)	61.6 (1.1)
Male	52.7 (5.7)	38.0 (3.6)	29.3 (3.1)	36.9 (2.0)	40.5 (3.2)	42.5 (2.4)	38.2 (6.9)	38.7 (3.8)	20.8 (7.6)	40.0 (9.7)	35.0 (1.3)	38.4 (1.1)
Age												
18-25	39.3 (7.2)	36.5 (2.9)	26.7 (2.3)	29.9 (1.8)	31.1 (2.1)	37.3 (1.7)	26.1 (4.6)	35.9 (3.9)	16.6 (4.9)	29.2 (6.8)	24.5 (0.9)	26.9 (0.9)
26-34	19.2 (5.1)	32.9 (3.9)	18.2 (2.7)	26.0 (2.0)	29.7 (2.8)	26.2 (1.9)	23.3 (5.2)	26.8 (4.3)	36.5 (9.7)	15.8 (4.7)	16.8 (0.9)	23.5 (0.7)
35-49	25.0 (7.2)	13.2 (3.4)	30.4 (3.3)	25.0 (2.0)	25.9 (2.8)	21.2 (1.9)	23.1 (5.9)	22.5 (3.2)	27.8 (6.8)	23.3 (6.7)	34.9 (1.5)	24.4 (0.9)
50-64	9.2 (4.4)	7.6 (4.3)	15.8 (3.8)	14.8 (2.4)	7.4 (1.9)	11.1 (1.9)	15.4 (7.7)	9.4 (3.2)	15.5 (9.6)	29.5 (11.3)	16.6 (1.5)	17.2 (1.0)
65 or older	7.3 (5.4)	9.7 (3.9)	8.9 (3.2)	4.4 (1.3)	5.9 (2.0)	4.2 (1.3)	12.1 (6.3)	5.4 (2.7)	3.7 (3.3)	2.2 (2.2)	7.2 (0.9)	8.1 (0.7)
Educational attainment												
High school but not college	12.4 (3.6)	14.4 (2.9)	32.0 (2.7)	29.3 (2.1)	26.0 (2.5)	27.8 (2.0)	27.0 (5.9)	24.3 (3.7)	24.2 (6.9)	32.2 (9.7)	32.2 (1.3)	24.7 (0.9)
Less than high school	8.5 (3.1)	10.3 (2.9)	25.4 (3.3)	18.0 (1.5)	37.4 (3.7)	18.9 (1.6)	23.8 (6.7)	12.0 (2.6)	31.9 (8.6)	24.0 (6.9)	16.1 (1.0)	9.8 (0.6)
Some college or college grad	79.1 (4.9)	75.3 (4.7)	42.6 (3.2)	52.7 (2.2)	36.6 (3.6)	53.3 (2.1)	49.2 (7.1)	63.7 (3.9)	43.9 (10.5)	43.8 (9.4)	51.7 (1.4)	65.5 (1.1)
Employment												
employed full-time	53.0 (8.3)	41.8 (4.5)	36.4 (3.4)	42.4 (2.9)	52.8 (3.1)	47.4 (1.9)	43.7 (7.9)	39.0 (3.3)	46.8 (9.4)	43.9 (9.7)	48.5 (1.3)	47.8 (1.3)
employed part-time	21.6 (5.1)	21.2 (3.1)	11.5 (1.4)	13.4 (1.3)	11.8 (1.8)	17.6 (1.9)	10.6 (3.1)	21.8 (2.1)	27.5 (9.3)	8.4 (3.1)	15.3 (0.7)	15.9 (0.9)
other	20.7 (6.1)	27.8 (4.6)	41.4 (4.2)	30.3 (2.3)	26.1 (3.2)	26.8 (2.2)	41.8 (7.7)	29.2 (3.3)	21.0 (6.4)	43.3 (9.5)	31.6 (1.2)	30.9 (1.2)
unemployed	4.7 (2.3)	9.2 (2.5)	10.8 (1.8)	13.9 (1.7)	9.2 (1.5)	8.3 (1.0)	4.0 (1.5)	10.0 (2.9)	4.8 (1.9)	4.4 (2.1)	4.6 (0.5)	5.4 (0.4)
Income												
\$0-19,999	22.6 (5.1)	15.7 (2.4)	43.6 (3.5)	36.6 (2.1)	34.3 (2.5)	22.6 (1.6)	44.4 (8.0)	26.9 (4.5)	53.0 (10.5)	44.4 (9.3)	27.0 (1.2)	21.6 (0.9)
\$20,000-49,999	33.5 (5.7)	29.3 (4.0)	41.5 (3.9)	33.5 (2.2)	43.2 (3.3)	37.2 (2.1)	31.3 (7.0)	34.5 (3.8)	28.0 (7.8)	34.4 (8.5)	34.4 (1.2)	30.0 (0.9)
\$50,000-74,999	18.5 (5.1)	16.1 (2.5)	7.3 (1.6)	12.7 (1.5)	10.3 (1.7)	17.5 (1.7)	5.2 (2.2)	12.1 (2.1)	14.1 (6.1)	16.3 (10.0)	17.3 (1.1)	14.7 (0.6)
\$75,000+	25.4 (5.6)	38.8 (4.6)	7.7 (1.4)	17.3 (2.0)	12.1 (2.8)	22.7 (1.7)	19.2 (7.2)	26.5 (3.3)	4.9 (3.2)	4.8 (2.2)	21.3 (1.5)	33.7 (1.0)
Insurance												
Public insurance	2.8 (1.1)	14.7 (2.2)	21.6 (2.3)	29.3 (2.2)	16.6 (2.6)	24.4 (2.1)	12.3 (4.7)	23.2 (4.4)	24.7 (9.5)	21.7 (6.4)	10.6 (0.9)	15.9 (0.6)
No insurance	14.6 (3.8)	10.8 (2.8)	16.9 (2.1)	13.6 (1.4)	34.8 (2.9)	19.6 (1.4)	21.8 (5.0)	10.3 (2.4)	13.1 (4.6)	9.4 (4.3)	19.6 (1.0)	11.5 (0.6)
Other	12.4 (4.7)	10.2 (3.2)	26.8 (4.1)	14.8 (1.8)	8.5 (1.9)	10.2 (1.4)	19.5 (6.8)	13.1 (1.8)	20.5 (7.1)	32.0 (9.6)	9.7 (1.0)	13.4 (0.6)
Private insurance	70.2 (6.1)	64.2 (4.5)	34.7 (3.2)	42.3 (2.3)	40.0 (2.5)	45.8 (2.2)	46.4 (8.1)	53.4 (4.1)	41.7 (10.9)	37.0 (9.8)	60.1 (1.3)	59.2 (0.9)

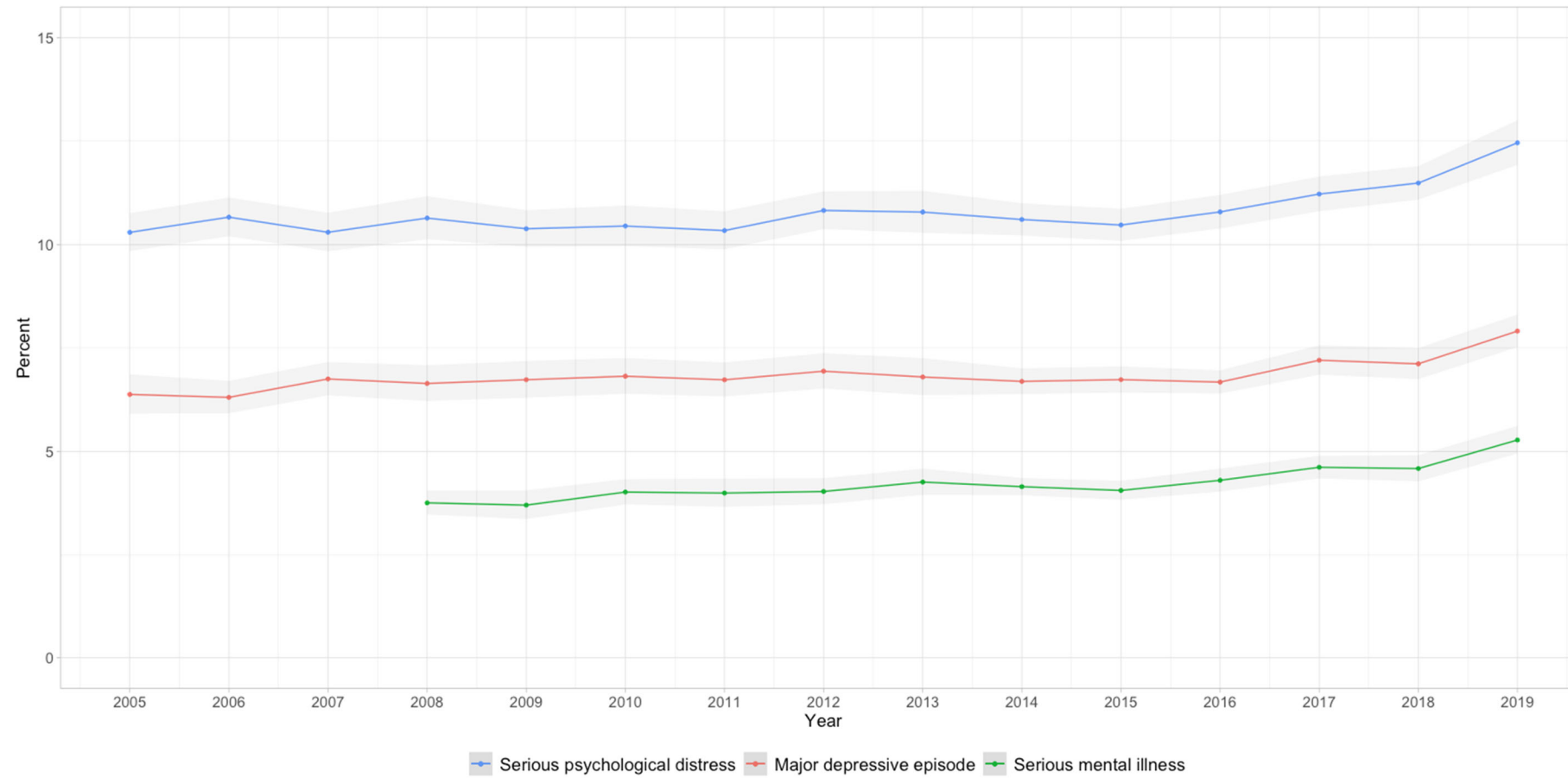
Note: Asian/Pacific Islander/Native Hawaiian (Asian/PI/Native HI), Black/African American (Black/AA), Native American/Alaska Native (Native Am/AK Native).

Supplemental Table 3. Sociodemographic characteristics among adults 18 and older with severe mental illness from 2008 to 2019

Variable (% , SE)	Asian/PI/Native HI		Black/AA		Hispanic		More than one race		Native American/Alaska Native		White	
	2008	2019	2008	2019	2008	2019	2008	2019	2008	2019	2008	2019
Sex												
Female	68.9 (14.2)	73.5 (6.1)	62.8 (6.5)	68.7 (3.9)	65.4 (5.8)	58.4 (4.4)	69.3 (13.5)	72.0 (5.0)	62.7 (13.9)	59.4 (15.2)	66.4 (2.2)	64.6 (1.6)
Male	31.1 (14.2)	26.5 (6.1)	37.2 (6.5)	31.3 (3.9)	34.6 (5.8)	41.6 (4.4)	30.7 (13.5)	28.0 (5.0)	37.3 (13.9)	40.6 (15.2)	33.6 (2.2)	35.4 (1.6)
Age												
18-25	22.4 (8.0)	30.6 (6.0)	19.1 (3.7)	23.3 (3.0)	30.9 (4.4)	26.1 (2.3)	21.7 (8.0)	25.2 (4.2)	24.4 (12.8)	19.6 (8.6)	12.2 (0.8)	21.4 (1.1)
26-34	14.4 (9.1)	32.3 (6.3)	33.2 (8.3)	21.6 (3.2)	23.8 (4.8)	25.2 (2.2)	18.5 (6.2)	30.8 (5.3)	33.2 (14.2)	14.9 (6.5)	17.6 (1.4)	23.4 (1.2)
35-49	20.7 (11.4)	19.0 (5.5)	34.8 (6.0)	33.1 (3.9)	21.8 (4.4)	29.2 (3.3)	48.4 (10.1)	24.1 (5.0)	29.2 (10.2)	21.3 (9.0)	40.1 (2.4)	28.1 (1.4)
50-64	42.5 (19.3)	7.3 (6.7)	12.4 (5.2)	20.8 (4.2)	18.5 (5.3)	15.3 (3.6)	0.9 (1.0)	14.2 (5.6)	13.2 (11.9)	44.2 (15.8)	23.2 (2.6)	19.7 (1.4)
65 or older	22.4 (8.0)	10.8 (6.8)	0.5 (0.5)	1.3 (1.3)	5.0 (4.9)	4.1 (1.9)	10.5 (7.9)	5.7 (3.8)	24.4 (12.8)	19.6 (8.6)	6.8 (1.5)	7.4 (1.0)
Educational attainment												
High school but not college	35.1 (16.6)	10.0 (3.4)	34.9 (6.0)	28.8 (3.3)	32.7 (6.5)	25.2 (3.6)	52.2 (15.4)	24.4 (4.8)	19.3 (6.1)	36.6 (15.7)	32.8 (2.5)	22.3 (1.1)
Less than high school	0.8 (0.8)	3.8 (3.4)	18.4 (3.6)	12.0 (2.3)	21.6 (5.0)	14.2 (2.8)	11.4 (5.7)	17.2 (5.3)	23.3 (9.2)	11.0 (7.5)	13.1 (1.5)	7.5 (0.7)
Some college or college grad	64.1 (16.6)	86.2 (4.6)	46.7 (5.7)	59.3 (3.6)	45.7 (6.5)	60.6 (3.8)	11.4 (5.7)	58.4 (5.8)	57.5 (12.6)	52.3 (15.1)	54.1 (2.7)	70.1 (1.4)
Employment												
employed full-time	55.0 (16.6)	36.8 (6.9)	35.5 (6.8)	43.0 (4.5)	34.6 (5.1)	46.8 (3.4)	10.7 (4.4)	35.9 (4.9)	18.6 (9.7)	47.0 (14.9)	43.3 (2.6)	44.0 (1.8)
employed part-time	7.1 (3.7)	16.7 (4.7)	13.1 (2.9)	16.4 (2.7)	19.4 (5.4)	19.0 (3.4)	25.6 (7.0)	13.6 (3.1)	7.6 (5.1)	6.9 (4.0)	13.4 (1.8)	15.7 (1.3)
other	36.3 (17.6)	38.7 (8.4)	38.5 (6.9)	31.0 (3.7)	41.6 (5.8)	27.7 (3.7)	61.1 (8.0)	41.3 (6.0)	45.0 (15.4)	41.9 (14.5)	35.7 (2.5)	34.3 (1.3)
unemployed	1.6 (1.6)	7.9 (3.3)	12.9 (4.6)	9.6 (2.0)	4.4 (1.4)	6.5 (1.5)	2.6 (1.7)	9.2 (4.9)	28.9 (13.0)	4.2 (3.4)	7.6 (1.0)	6.1 (0.6)
Income												
\$0-19,999	10.7 (5.2)	18.6 (4.4)	42.7 (6.6)	37.2 (3.7)	31.1 (5.5)	20.4 (3.1)	39.2 (14.7)	32.4 (6.2)	40.6 (14.4)	46.0 (14.5)	23.5 (1.9)	23.4 (1.4)
\$20,000-49,999	53.2 (17.6)	27.1 (7.5)	40.9 (7.4)	28.0 (3.3)	37.0 (5.9)	34.2 (4.2)	43.6 (11.6)	34.6 (5.7)	45.8 (14.8)	21.4 (9.0)	34.1 (2.0)	31.2 (1.3)
\$50,000-74,999	29.6 (18.1)	17.7 (5.1)	13.3 (3.5)	13.4 (3.2)	13.8 (4.3)	19.8 (2.9)	5.1 (2.5)	10.6 (3.1)	12.3 (8.5)	28.3 (16.3)	21.5 (2.2)	13.9 (1.1)
\$75,000+	6.5 (4.9)	36.6 (8.3)	3.2 (1.6)	21.5 (3.7)	18.1 (4.2)	25.7 (3.2)	12.2 (5.2)	22.5 (4.8)	1.2 (1.1)	4.3 (2.5)	20.9 (2.2)	31.6 (1.4)
Insurance												
Public insurance	4.2 (3.3)	14.2 (4.1)	29.5 (5.8)	24.0 (4.7)	19.9 (4.6)	25.1 (3.9)	19.1 (6.5)	30.9 (5.9)	19.4 (13.4)	10.0 (4.6)	10.4 (1.4)	18.2 (1.2)
No insurance	7.2 (3.7)	7.5 (2.3)	20.2 (4.2)	13.0 (2.4)	24.1 (5.3)	13.5 (2.0)	10.0 (5.1)	13.6 (4.2)	21.2 (9.6)	10.4 (6.8)	19.5 (1.7)	11.4 (0.9)
Other	1.9 (1.4)	16.3 (6.7)	13.2 (4.6)	18.4 (3.9)	14.8 (4.1)	12.7 (3.4)	32.5 (13.7)	13.6 (4.3)	27.3 (12.7)	35.1 (14.1)	13.9 (1.7)	13.6 (1.1)
Private insurance	86.7 (5.8)	62.1 (8.5)	37.1 (6.5)	44.6 (4.4)	41.3 (5.9)	48.8 (3.9)	38.4 (10.3)	41.9 (5.7)	32.1 (14.8)	44.5 (15.2)	56.1 (2.5)	56.8 (1.5)

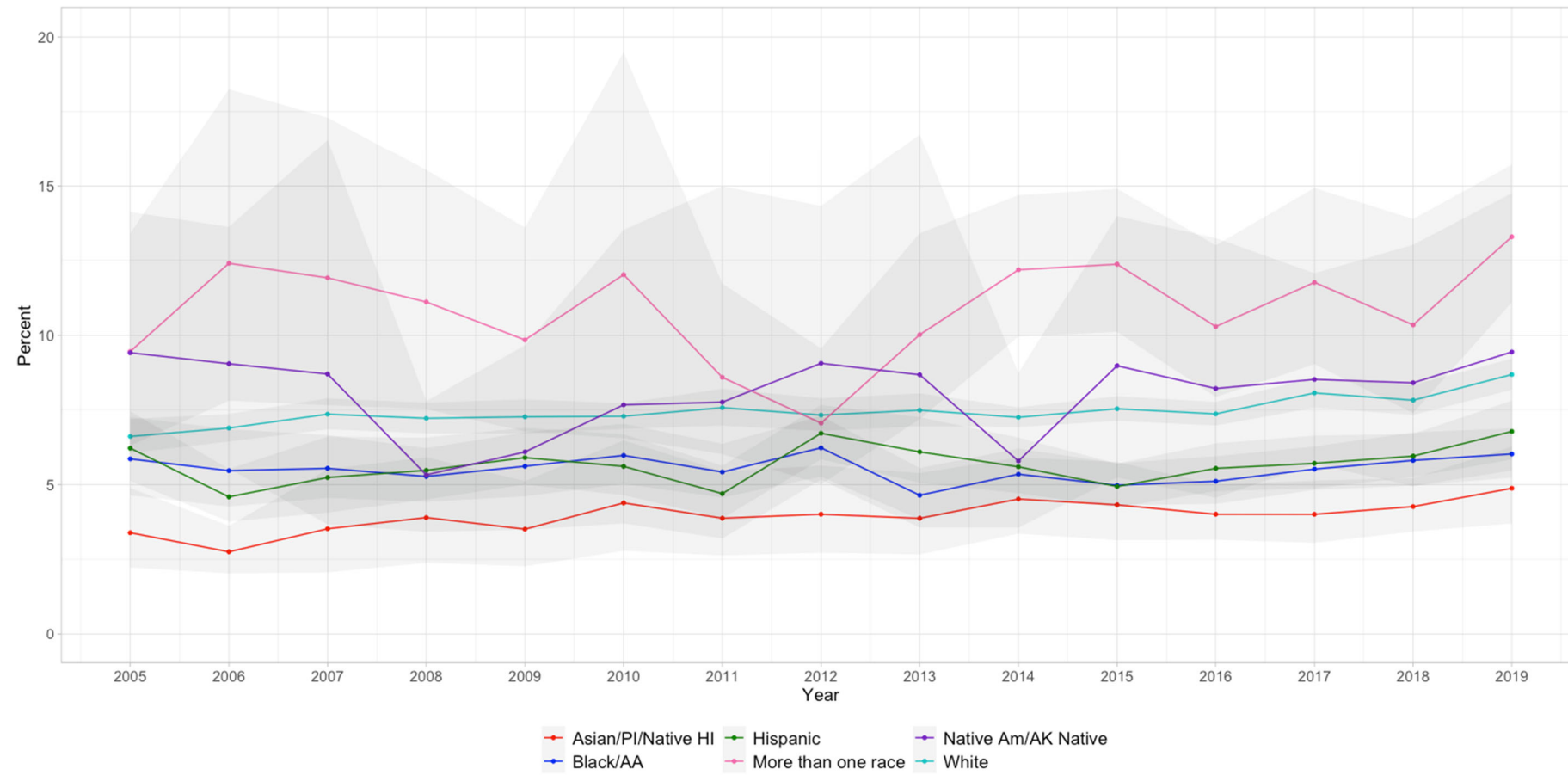
Note: Asian/Pacific Islander/Native Hawaiian (Asian/PI/Native HI), Black/African American (Black/AA), Native American/Alaska Native (Native Am/AK Native).

Supplemental Figure 1. Prevalence of major depressive episode, serious psychological distress and severe mental illness in the past year among adults 18 and older in the 2005-2019 NSDUH



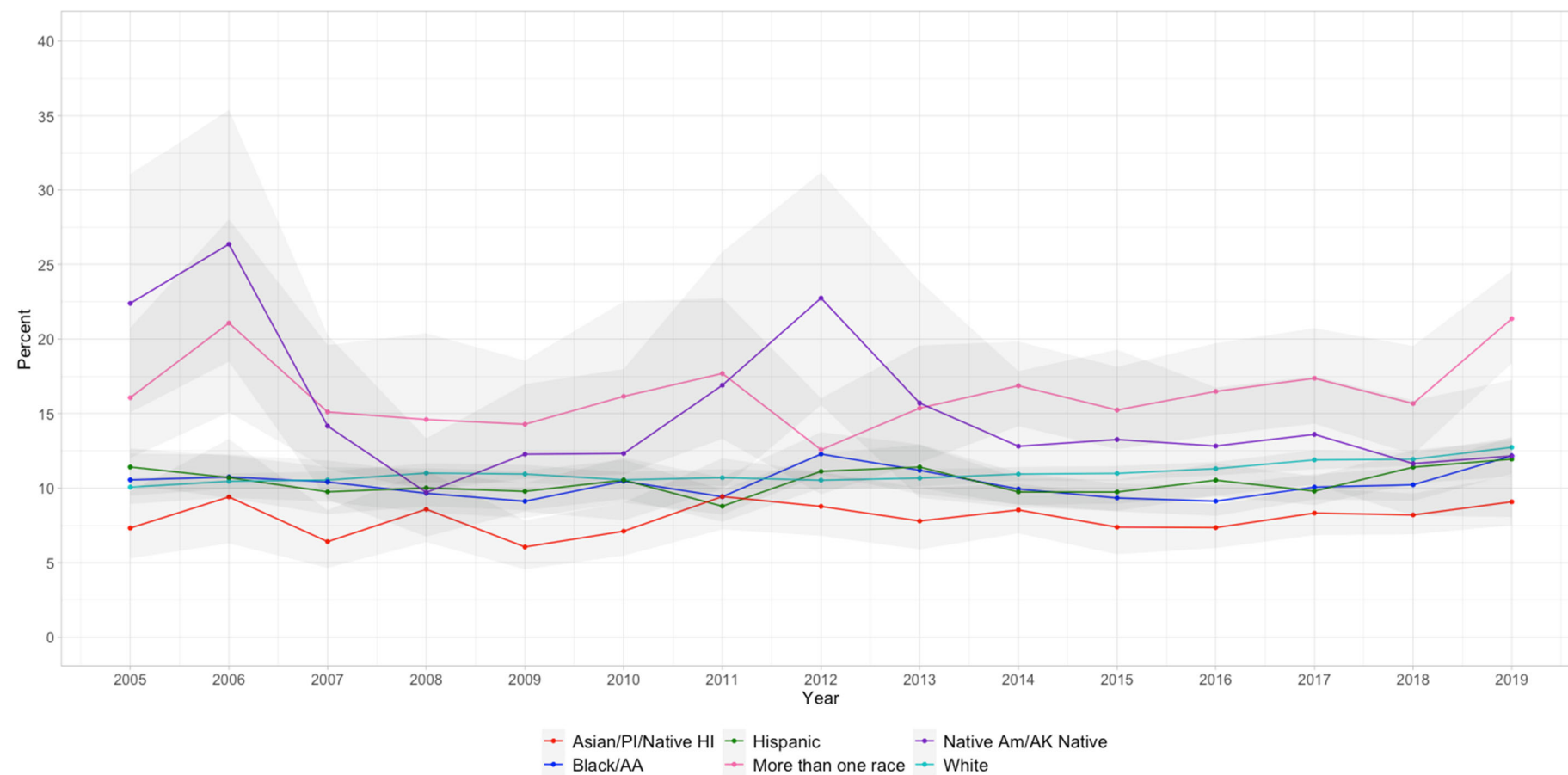
Note: The shading around the curves represents the 95% CI.

Supplemental Figure 2. Prevalence of past-year major depressive episode among adults 18 and older by race and ethnicity, NSDUH 2005-2019



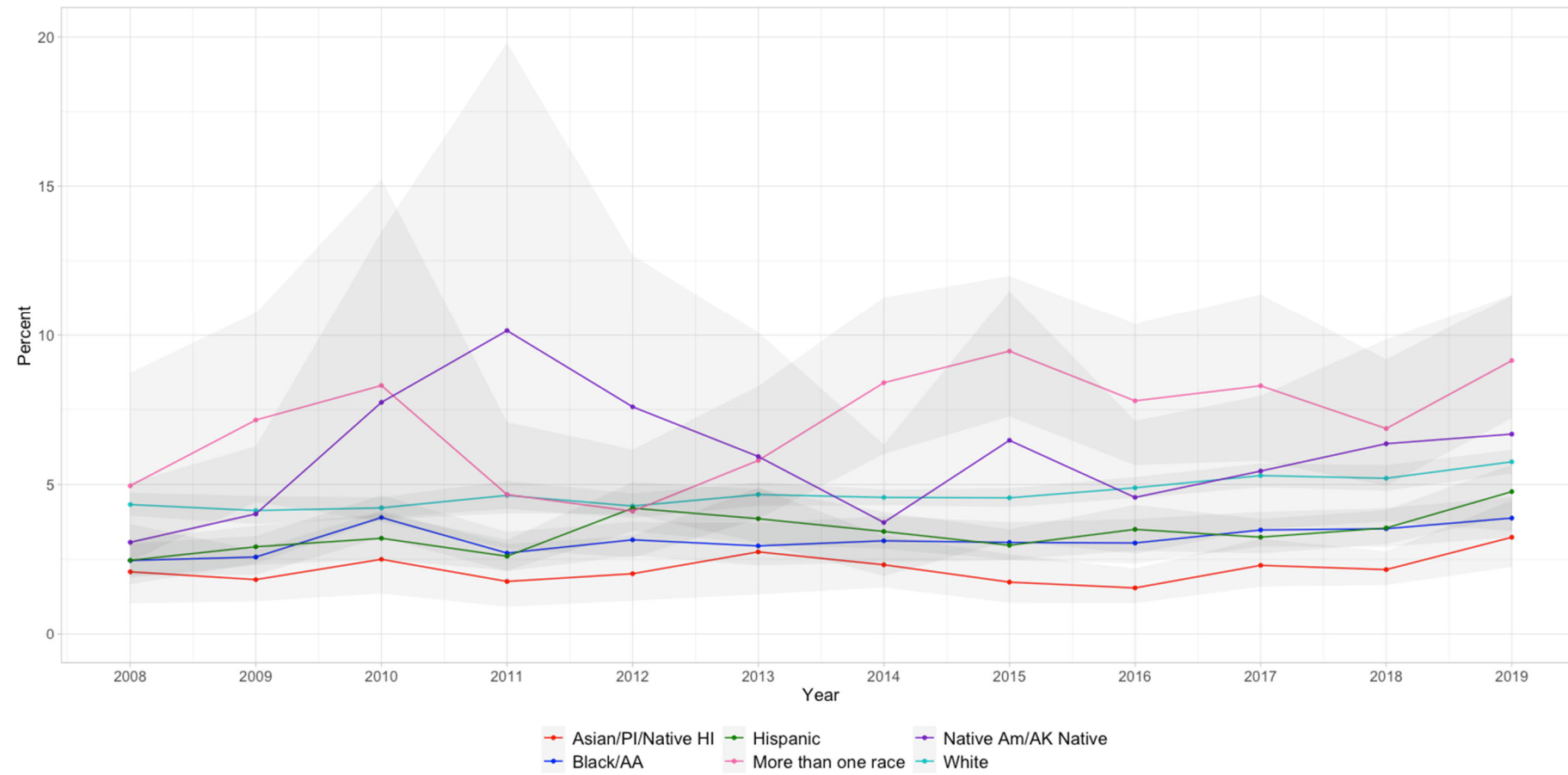
Note: The shading around the curves represents the 95% CI. Asian/Pacific Islander/Native Hawaiian (Asian/PI/Native HI), Black/African American (Black/AA), Native American/Alaska Native (Native Am/AK Native).

Supplemental Figure 3. Prevalence of past-year serious psychological distress among adults 18 and older by race and ethnicity, NSDUH 2005-2019



Note: The shading around the curves represents the 95% CI. Asian/Pacific Islander/Native Hawaiian (Asian/PI/Native HI), Black/African American (Black/AA), Native American/Alaska Native (Native Am/AK Native).

Supplemental Figure 4. Prevalence of past-year severe mental illness among adults 18 and older by race and ethnicity, NSDUH 2005-2019



Note: The shading around the curves represents the 95% CI. Asian/Pacific Islander/Native Hawaiian (Asian/PI/Native HI), Black/African American (Black/AA), Native American/Alaska Native (Native Am/AK Native).

Supplemental Table 4. Trends in past-year any mental health treatment among those with past-year major depressive episode, serious psychological distress, and severe mental illness among adults 18 and older by racial/ethnic group, NSDUH 2005/2008 versus 2019

Race/ethnicity		Major depressive episode				Serious psychological distress				Severe mental illness			
		2005	2019	Difference between years	Difference in disparities	2005	2019	Difference between years	Difference in disparities	2008	2019	Difference between years	Difference in disparities
White	% <sup>a</sup> (SE)	57.7 (2)	63.3 (1.1)	5.6* (2.3)		50.4 (1.5)	55.3 (1.1)	4.9* (1.9)		67.9 (2.6)	69.8 (1.3)	1.8 (3)	
Asian/Pacific Islander/Native Hawaiian	% <sup>a</sup> (SE)	40.8 (11.5)	44 (6.7)	3.3 (13.3)		20.9 (5.8)	30.6 (4.4)	9.6 (7.3)		61.2 (15.2)	49.9 (8.3)	-11.3 (17.3)	
	Disparity % <sup>b</sup> (SE)	-16.9 (11.9)	-19.2* (7.1)		-2.3 (13.8)	-29.5* (6.5)	-24.8* (4.6)		4.7 (8)	-6.7 (15.4)	-19.9* (8.5)		-13.1 (17.6)
Black/African American	% <sup>a</sup> (SE)	42.9 (5.2)	43 (3.7)	0.1 (6.3)		36.2 (3.6)	35 (2.6)	-1.1 (4.5)		58.6 (5.7)	55.8 (4)	-2.8 (7)	
	Disparity % <sup>b</sup> (SE)	-14.7* (5.6)	-20.3* (3.8)		-5.5 (6.8)	-14.2* (4)	-20.3* (2.9)		-6 (4.9)	-9.3 (5.9)	-14.0* (4.3)		-4.7 (7.3)
Hispanic	% <sup>a</sup> (SE)	32.6 (3.1)	48.3 (3)	15.8 (4.4)		28.5 (2.8)	34.8 (2.2)	6.3 (3.5)		47.7 (6.2)	51.7 (4.1)	3.9 (7.5)	
	Disparity % <sup>b</sup> (SE)	-25.1* (3.6)	-14.9* (3.4)		10.2* (5)	-21.9* (2.9)	-20.6* (2.4)		1.3 (3.8)	-20.2* (6.6)	-18.1* (4.4)		2.1 (7.9)
More than one race	% <sup>a</sup> (SE)	38.5 (8.5)	56.1 (5.1)	17.5 (9.9)		38.2 (7.1)	46.6 (3.8)	8.4 (8.1)		60.5 (10)	62.5 (6.1)	2 (11.7)	
	Disparity % <sup>b</sup> (SE)	-19.1* (8.8)	-7.2 (5.2)		11.9 (10.2)	-12.2 (7.4)	-8.7 (4.2)		3.5 (8.5)	-7.4 (10)	-7.2 (6.6)		0.2 (12)
Native American/Alaska Native	% <sup>a</sup> (SE)	41.5 (9)	49.6 (11.9)	8.2 (14.9)		24.2 (6.5)	40.6 (22.3)	16.4 (11.5)		91.4 (4.2)	57.6 (15.3)	-33.8* (15.9)	
	Disparity % <sup>b</sup> (SE)	-16.2 (9)	-13.6 (11.9)		2.6 (14.9)	-26.2* (6.8)	-14.7 (9.4)		11.5 (11.6)	23.4* (5)	-12.2 (15.3)		-35.6* (16.1)

Note:

\*indicates RR values with  $p < 0.05$ . We used data from 2005-2019 to examine treatment among adults with past-year major depressive episode or serious psychological distress, and 2008-2019 among adults with past-year severe mental illness. Results are shown for study start year (2005 for major depressive episode and serious psychological distress, 2008 for severe mental illness) and study end year (2019).

<sup>a</sup>Denotes p-values were derived from linear risk regression modeling differences between years within each racial/ethnic group. Bold values have  $p < 0.05$ .

<sup>b</sup>Denotes p-values were derived from linear risk regression for differences in trends between racial/ethnic minority group and whites. Bold values have  $p < 0.05$ .

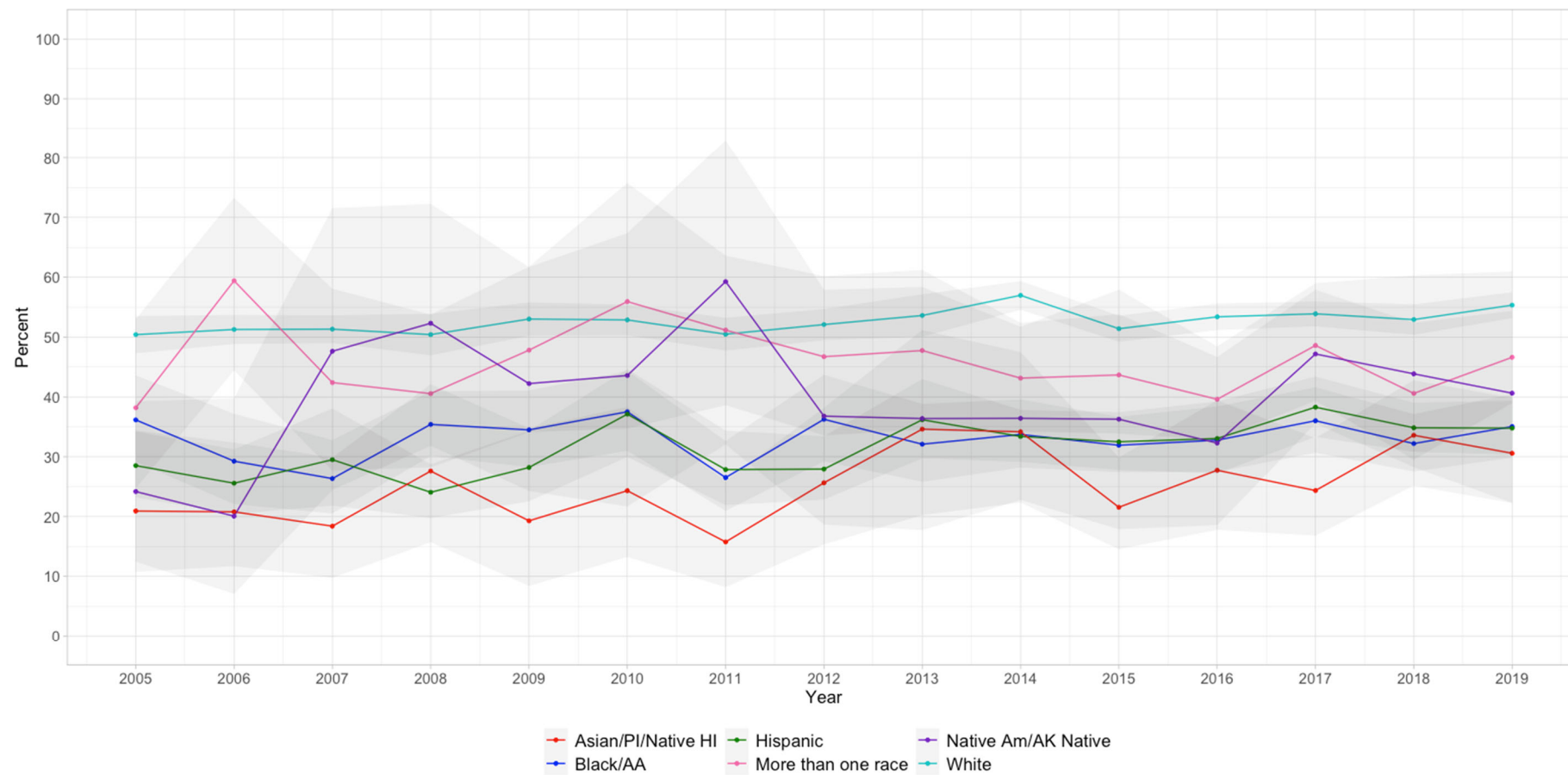


Supplemental Figure 5. Prevalence of past-year any mental health treatment among adults 18 and older with major depressive episode by race and ethnicity, NSDUH 2005-2019



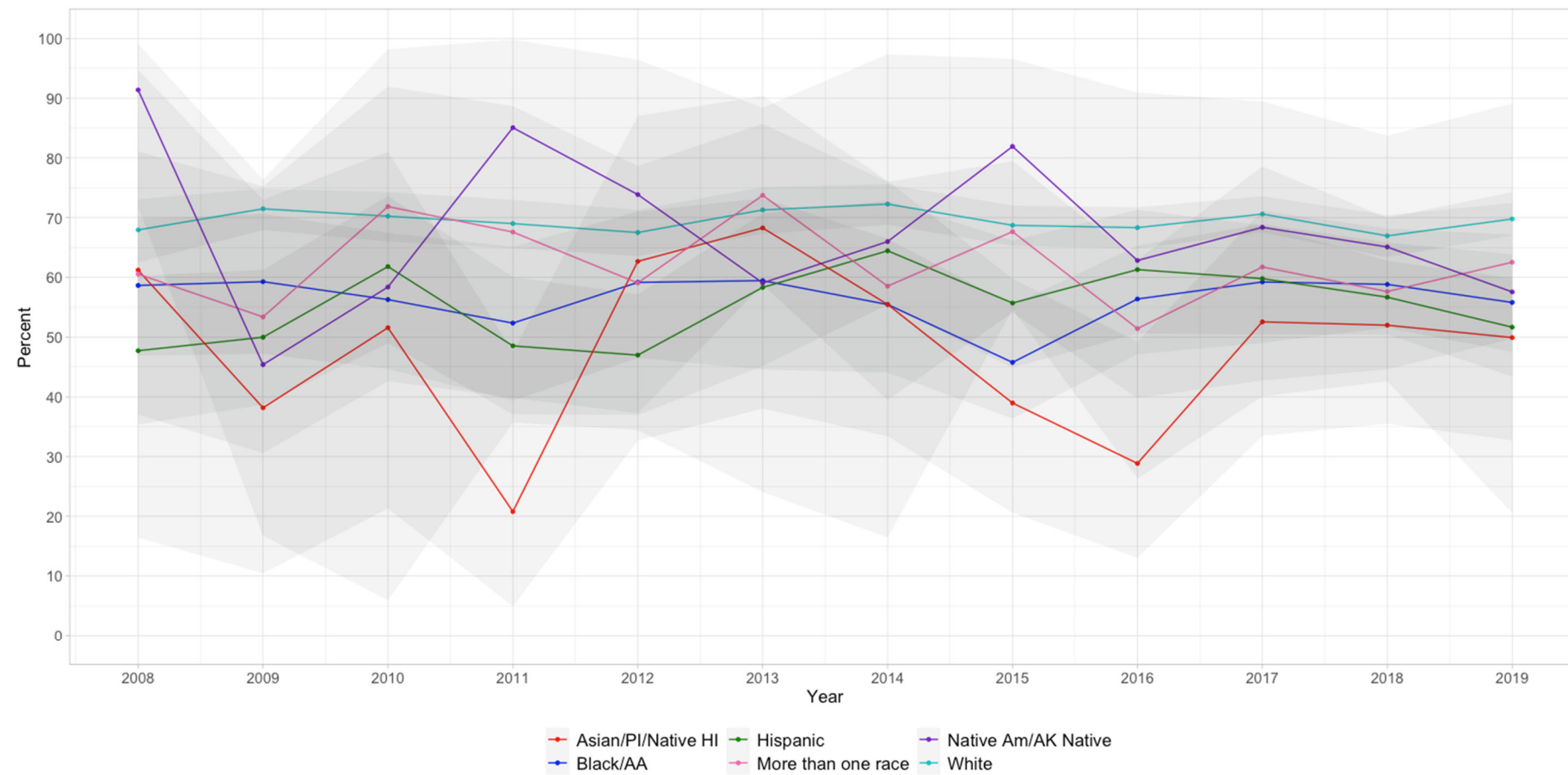
Note: The shading around the curves represents the 95% CI. Asian/Pacific Islander/Native Hawaiian (Asian/PI/Native HI), Black/African American (Black/AA), Native American/Alaska Native (Native Am/AK Native).

Supplemental Figure 6. Prevalence of past-year any mental health treatment among adults 18 and older with serious psychological distress by race and ethnicity, NSDUH 2005-2019



Note: The shading around the curves represents the 95% CI. Asian/Pacific Islander/Native Hawaiian (Asian/PI/Native HI), Black/African American (Black/AA), Native American/Alaska Native (Native Am/AK Native).

Supplemental Figure 7. Prevalence of past-year any mental health treatment among adults 18 and older with severe mental illness by race and ethnicity, NSDUH 2008-2019



Note: The shading around the curves represents the 95% CI. Asian/Pacific Islander/Native Hawaiian (Asian/PI/Native HI), Black/African American (Black/AA), Native American/Alaska Native (Native Am/AK Native).