

Table S1. Agents included within each medication class

Medication class	Agents
Antidepressants	<p><u>SSRI</u>: Citalopram, escitalopram, fluoxetine, fluvoxamine, paroxetine, sertraline</p> <p><u>SNRI</u>: Desvenlafaxine, duloxetine, levomilnacipran, milnacipran, venlafaxine</p> <p><u>TCA</u>: Amitriptyline, amoxapine, clomipramine, desipramine, doxepin, imipramine, nortriptyline, protriptyline, trimipramine</p> <p><u>Other</u>: Bupropion, isocarboxazid, maprotiline, mirtazapine, nefazodone, phenelzine, selegiline (transdermal), tranylcypromine, trazodone, vilazodone, vortioxetine</p>
Antipsychotics	<p><u>Atypical</u>: Aripiprazole, asenapine, brexpiprazole, cariprazine, clozapine, iloperidone, lumateperone, lurasidone, olanzapine, paliperidone, pimavanserin, quetiapine, risperidone, ziprasidone</p> <p><u>Typical</u>: Chlorpromazine, fluphenazine, haloperidol, loxapine, molindone, perphenazine, pimozide, thioridazine, thiothixene, trifluoperazine</p>
ADHD medications	<p><u>Alpha agonists</u>: Clonidine, guanfacine</p> <p><u>Stimulants</u>: Amphetamine, dextroamphetamine, dexamfetamine, lisdexamfetamine, methamphetamine, methylphenidate</p>
Anxiolytics, Sedatives	<p><u>Benzodiazepine</u>: alprazolam, chlordiazepoxide, clobazam, clonazepam, clorazepate, diazepam, estazolam, flurazepam, lorazepam, midazolam, oxazepam, quazepam, temazepam, triazolam</p> <p><u>Anxiolytic, Other</u>: buspirone, meprobamate</p> <p><u>Sedative, other</u>: (Z-drugs) eszopiclone, zaleplon, zolpidem; (barbiturates) butabarbital, pentobarbital, phenobarbital, secobarbital; (other) lemborexant, ramelteon, suvorexant</p>

Table S2. Sum and percent-change of psychotropic prescriptions dispensed to children and adolescents (5-18 years) from March through September 2020 versus March-September 2019

	Total prescriptions dispensed March through September		Difference (2020 vs. 2019)	Percent-change (2020 vs. 2019) ^a
	2019	2020		
Overall	32,105,537	30,104,686	-2,000,851	-6.2%
ADHD medication	18,912,167	16,921,571	-1,990,596	-10.5%
Antidepressant	9,102,050	9,175,456	73,406	0.8%
Antipsychotics	2,850,843	2,831,776	-19,067	-0.7%
Sedatives, anxiolytics	1,240,477	1,175,883	-64,594	-5.2%
ADHD medication (stimulants, alpha agonists)				
New England	1,003,455	885,510	-117,945	-11.8%
Mid-Atlantic	2,034,581	1,833,701	-200,880	-9.9%
South-Atlantic	4,400,619	3,927,207	-473,412	-10.8%
East North Central	3,274,160	2,952,800	-321,360	-9.8%
East South Central	1,637,746	1,469,669	-168,077	-10.3%
West North Central	1,506,089	1,396,749	-109,340	-7.3%
West South Central	2,731,419	2,377,692	-353,727	-13.0%
Mountain	986,255	925,326	-60,929	-6.2%
Pacific	1,337,843	1,152,917	-184,926	-13.8%
Antidepressants (SSRI, SNRI, TCA, other)				
New England	579,522	556,249	-23,273	-4.0%
Mid-Atlantic	1,069,579	1,070,569	990	0.1%
South-Atlantic	1,646,195	1,689,573	43,378	2.6%
East North Central	1,632,727	1,628,901	-3,826	-0.2%
East South Central	600,674	611,502	10,828	1.8%
West North Central	897,173	935,600	38,427	4.3%
West South Central	1,108,396	1,126,876	18,480	1.7%
Mountain	683,307	701,223	17,916	2.6%
Pacific	884,477	854,963	-29,514	-3.3%
Antipsychotics (atypical, typical)				
New England	145,327	138,757	-6,570	-4.5%
Mid-Atlantic	347,721	339,226	-8,495	-2.4%
South-Atlantic	519,987	528,023	8,036	1.5%
East North Central	516,515	502,688	-13,827	-2.7%
East South Central	214,183	219,148	4,965	2.3%
West North Central	246,118	254,350	8,232	3.3%
West South Central	420,130	426,565	6,435	1.5%
Mountain	225,417	225,659	242	0.1%
Pacific	215,445	197,360	-18,085	-8.4%
Sedatives, anxiolytics				
New England	63,113	57,966	-5,147	-8.2%
Mid-Atlantic	144,734	135,165	-9,569	-6.6%
South-Atlantic	265,436	253,509	-11,927	-4.5%
East North Central	208,743	201,662	-7,081	-3.4%

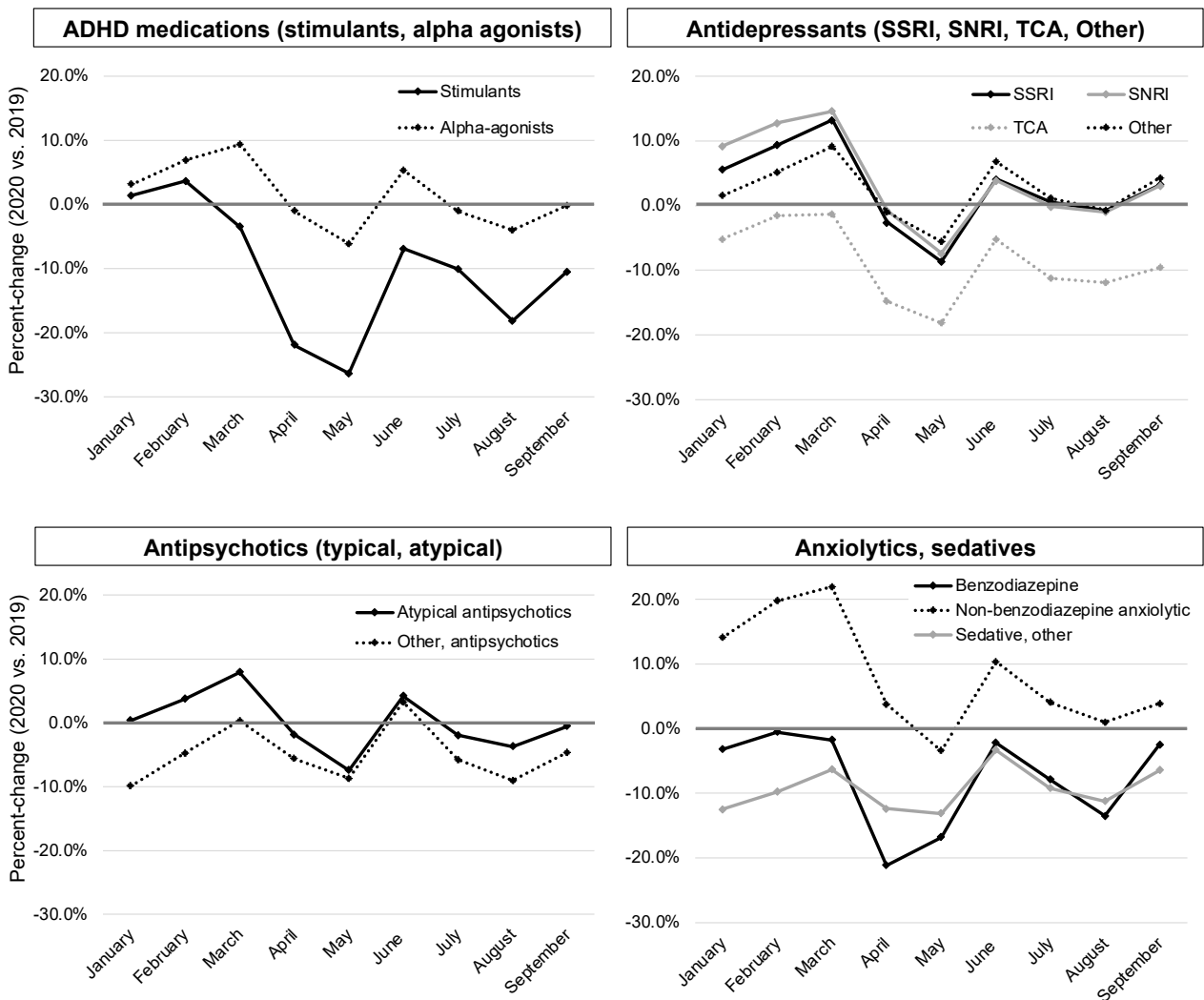
East South Central	93,247	92,078	-1,169	-1.3%
West North Central	95,700	92,680	-3,020	-3.2%
West South Central	176,980	167,942	-9,038	-5.1%
Mountain	80,296	76,132	-4,164	-5.2%
Pacific	112,228	98,749	-13,479	-12.0%

ADHD: Attention-deficit/hyperactivity disorder; SSRI: Selective serotonin reuptake inhibitor;

SNRI: Serotonin–norepinephrine reuptake inhibitor; TCA: Tricyclic antidepressants

^aPercent-change = [(sum of dispensings from March to September 2020 - sum of dispensings from March to September 2019) / sum of dispensings from March to September 2019] * 100

Figure S1. Monthly percent change in prescription psychotropic medications dispensed to U.S. youths, 2020 vs. 2019



A negative percent change value indicates that fewer medications were dispensed during a given month in 2020 compared with the same month in 2019.

For reference, total prescription dispensing count in September 2020 by medication class: Stimulants, n=1,858,095; alpha-agonist, n=700,195; Selective serotonin reuptake inhibitors (SSRIs), n=975,476; Serotonin–norepinephrine reuptake inhibitors (SNRIs), n=78,061; Tricyclic antidepressants (TCAs), n=56,190; Other antidepressants, n=233,933; Atypical antipsychotics, n=392,314; Other, antipsychotics, n=7,395; Benzodiazepines, n=108,221; non-benzodiazepine anxiolytics, n=54,802; Sedative, other, n=14,315