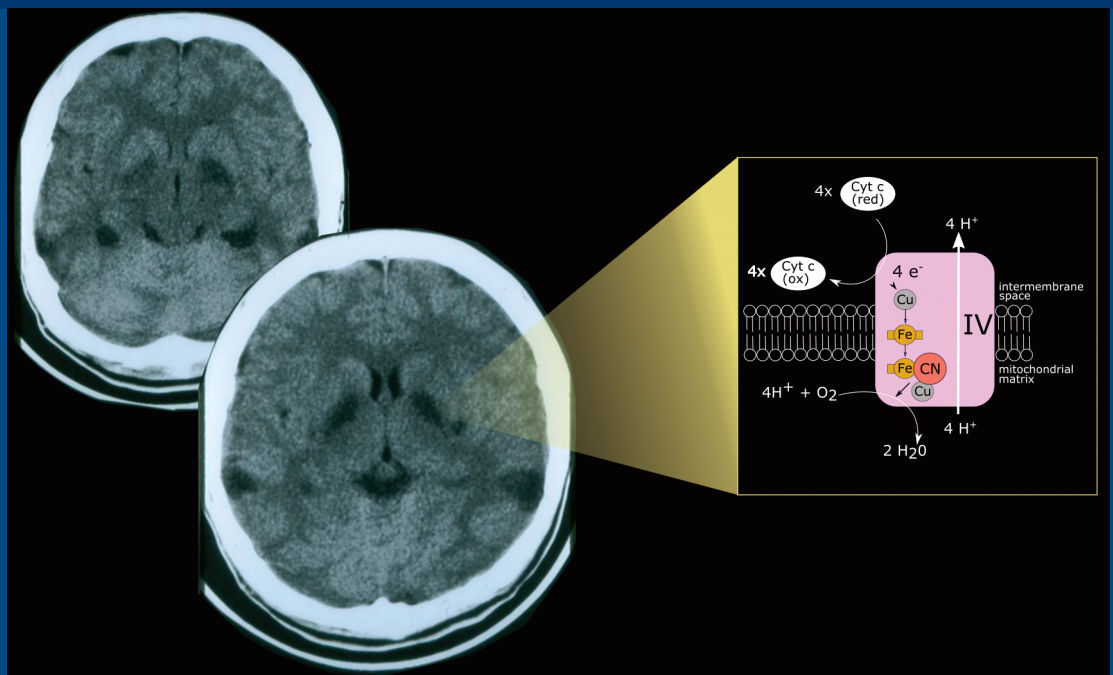


The Journal of Neuropsychiatry

and Clinical Neurosciences



Clinical Application of Findings From Longitudinal Studies of Younger-Onset Dementia: Rapid Review and Recommendations

Comparison of T₁Rho MRI, Glucose Metabolism, and Amyloid Burden Across the Cognitive Spectrum: A Pilot Study

Effect of Functional BDNF and COMT Polymorphisms on Symptoms and Regional Brain Volume in Frontotemporal Dementia and Corticobasal Syndrome

Topography of Cholinergic Changes in Dementia With Lewy Bodies and Key Neural Network Hubs

Bipolar Disorder Among Patients Diagnosed With Frontotemporal Dementia