

## Contents

- A1 Editorial Board  
A3 Highlights of this issue

## Editorials

- 1 **Overvaluing autonomous decision-making**  
P. Lepping and B. N. Raveesh
- 3 **Epigenetic traces of childhood maltreatment in peripheral blood: a new strategy to explore gene–environment interactions**  
R. Uher and I. C. G. Weaver
- 5 **Dr Ada English (1875–1944) – psychiatry 100 years ago**  
Brendan D. Kelly
- 6 **Uncovering the complexity of Tourette syndrome, little by little**  
D. A. Gorman and E. Abi-Jaoude
- 8 **Gilles de la Tourette syndrome – in 100 words**  
Andrea E. Cavanna
- 9 **Callosal morphology in schizophrenia: what can shape tell us about function and illness?**  
M. Walterfang and D. Velakoulis

## Review articles

- 12 **Effectiveness of psychotherapy for severe somatoform disorder: meta-analysis**  
J. A. Koelen, J. H. Houtveen, A. Abbass, P. Luyten, E. H. M. Eurelings-Bontekoe, S. A. M. Van Broeckhuysen-Kloth, M. E. F. Bühring and R. Geenen
- 20 **Cognitive-behavioural therapy for the symptoms of schizophrenia: systematic review and meta-analysis with examination of potential bias**  
S. Jauhar, P. J. McKenna, J. Radua, E. Fung, R. Salvador and K. R. Laws

## Papers

- 30 **Childhood maltreatment and methylation of the glucocorticoid receptor gene *NR3C1* in bipolar disorder**  
N. Perroud, A. Dayer, C. Piguet, A. Nallet, S. Favre, A. Malafosse and J.-M. Aubry
- 35 **Feigned insanity – psychiatry in sacred texts**  
Andrew Sims
- 36 ***CACNA1C*, schizophrenia and major depressive disorder in the Han Chinese population**  
K. He, Z. An, Q. Wang, T. Li, Z. Li, J. Chen, W. Li, T. Wang, J. Ji, G. Feng, H. Lin, Q. Yi and Y. Shi
- 40 **Association between pre- and perinatal exposures and Tourette syndrome or chronic tic disorder in the ALSPAC cohort**  
C. A. Mathews, J. M. Scharf, L. L. Miller, C. Macdonald-Wallis, D. A. Lawlor and Y. Ben-Shlomo
- 46 **Psychopathology and cognition in children with 22q11.2 deletion syndrome**  
M. Niarchou, S. Zammit, S. H. M. van Goozen, A. Thapar, H. M. Tierling, M. J. Owen and M. B. M. van den Bree

- 55 **Corpus callosum morphology in first-episode and chronic schizophrenia: combined magnetic resonance and diffusion tensor imaging study of Chinese Singaporean patients**  
S. L. Collinson, S. C. Gan, P. S. Woon, C. Kuswanto, M. Y. Sum, G. L. Yang, J. M. Lui, Y. Y. Sitoh, W. L. Nowinski and K. Sim
- 61 **Amygdala activation and symptom dimensions in obsessive-compulsive disorder**  
E. Via, N. Cardoner, J. Pujol, P. Alonso, M. López-Solà, E. Real, O. Contreras-Rodríguez, J. Deus, C. Segalàs, J. M. Menchón, C. Soriano-Mas and B. J. Harrison
- 68 **On Laing's *The Divided Self* – reflection**  
Sandy Robertson
- 69 **Cost-effectiveness of cognitive-behavioural therapy as an adjunct to pharmacotherapy for treatment-resistant depression in primary care: economic evaluation of the CoBaT Trial**  
S. Hollinghurst, F. E. Carroll, A. Abel, J. Campbell, A. Garland, B. Jerrom, D. Kessler, W. Kuyken, J. Morrison, N. Ridgway, L. Thomas, K. Turner, C. Williams, T. J. Peters, G. Lewis and N. Wiles

## Short report

- 77 **Cognitive-behavioural therapy with post-session D-cycloserine augmentation for paediatric obsessive-compulsive disorder: pilot randomised controlled trial**  
D. Mataix-Cols, C. Turner, B. Monzani, K. Isomura, C. Murphy, G. Krebs and I. Heyman

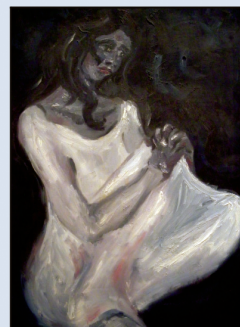
## Columns

- 79 Correspondence  
82 Book reviews  
86 Contents of *Advances in Psychiatric Treatment*  
87 Books received  
88 Contents of the *American Journal of Psychiatry*  
89 From the Editor's desk

## Cover picture

*Melancholia* (2004) by Sarvenaz Keyhani (b. 1977)

Originally from Iran, I learned to paint when I was 18. I had an exhibition of my work in Tehran in 2000. I trained in psychiatry in Wessex from 2006 to 2009 and since then have been working as a Staff Grade Psychiatrist in Leeds. One of my paintings, *Before the Meeting*, was published in the April 2011 issue of the *Journal* (vol. 198, p.252). I am a figurative painter and use oil, chalk and oil pastel. In *Melancholia*, the white and black colours serve to intensify the melancholic feeling; depression makes everything bleak and colourless. The woman in the painting brings her knees up to her chest; she is withdrawing from the world. The colour purple is meant to signal the hope that she will recover.



We are always looking for interesting and visually appealing images for the cover of the *Journal* and would welcome suggestions or pictures, which should be sent to Dr Allan Beveridge, British Journal of Psychiatry, 21 Prescot Street, London E1 8BB, UK or [bjp@rcpsych.ac.uk](mailto:bjp@rcpsych.ac.uk).